

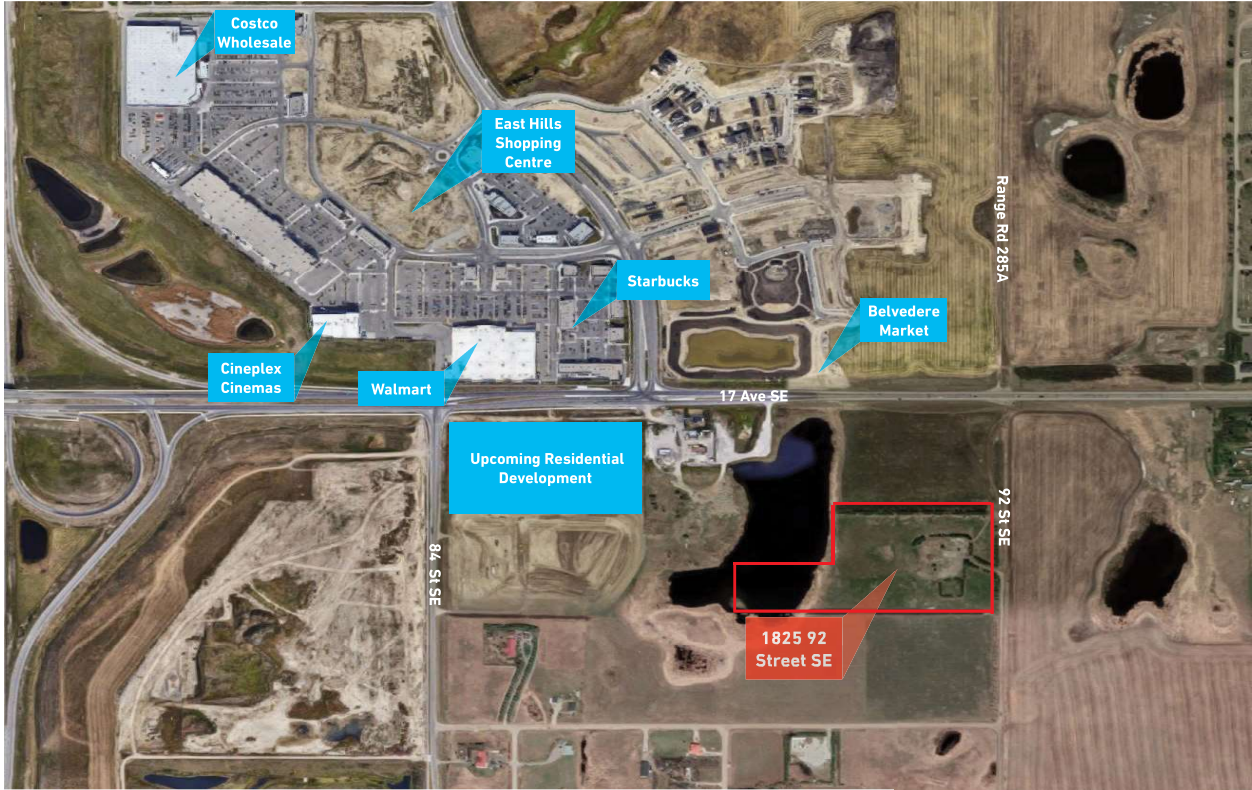
Belvedere Development

1825 92 Street SE
Calgary, Alberta

FEATURES

- Excellent redevelopment site.
- 15.27+/- acres with 650 ft of frontage on 92 Street SE.
- In the Belvedere ASP and near to the East Hills shopping center and Belvedere Market.
- Presently Zoned SFUD2 Medium Term- Farmland.
- Perfect site for future industrial, mixed use or multi residential development.
- One of the last remaining properties available on the Calgary-Chestermere corridor.





WHAT EAST HILLS WILL OFFER

The maturing area of Belvedere has already caused a rise in the number of visitors to the area. Increased traffic and exposure combined with easy access to the area benefits future commercial and residential development. With all necessary servicing at your doorstep, this is an ideal opportunity to secure a mid-term development opportunity in a built area, where unencumbered land is hard to come by. With proposed transit routes, residential expansion, and an increase in infrastructure, Belvedere is one of the most desirable new areas for prospective builders and consumers alike!



info@sanostante.com

403-289-3435

sanostante.com

