



CAMELBACK COLLECTIVE

2801 EAST CAMELBACK ROAD
PHOENIX, AZ

CBRE

A CLASS OF ITS OWN

BOUTIQUE HOTEL

CLASS A OFFICE

Camelback Collective is a Class A mixed use office and hotel development located in the prestigious Camelback Corridor. The property boasts modern features and design, as well as stunning golf course, mountain, and lake views through floor to ceiling glass windows. Fantastic synergies with on-site AC Hotel by Marriott make Camelback Collective the ideal choice for tenants looking for an innovative workplace that enhances lifestyle and collaboration.



NORTH VIEW

FROM 4TH FLOOR



CLASS A OFFICE

BY THE NUMBERS

CAMELBACK COLLECTIVE OFFICE



Total Office RSF
±115,838 RSF



Floor Plate Size
±31,600 RSF



Parking Ratio
4.0/1,000 RSF



Full Height Glass
13'6" Deck to Deck



Surface Parking
125 Stalls With Easy,
Convenient Access



Structured Parking
2 Levels Underground With
Direct Elevator Access

BOUTIQUE HOTEL

BY THE NUMBERS

AC HOTEL BY MARRIOTT



Hotel Rooms
160 Rooms



Conference & Meeting Space
5,010 SF



On-Site Amenities
Full Restaurant
(Breakfast & Dinner)



On-Site Amenities
AC Cocktail Bar
& Lounge



On-Site Amenities
AC Marketplace
Grab & Go



On-Site Amenities
Fitness and
Health Center

PRESTIGIOUS LOCATION

Camelback Collective is located at the intersection of 28th Street & Camelback Road in the Camelback Corridor, notably one of Phoenix's most prestigious office addresses.

The site offers a comfortable commute to the Arcadia, Paradise Valley, Biltmore and North Central neighborhoods, as well as easy access to Phoenix Sky Harbor International Airport via a 15 minute drive on the SR/51 freeway. Within walking distance to one of the premier malls in Metro Phoenix, Biltmore Fashion Center, Camelback Collective will offer employees and guests convenient access to high-end shopping, dining and entertainment.



ON-SITE AC HOTEL
BY MARRIOTT



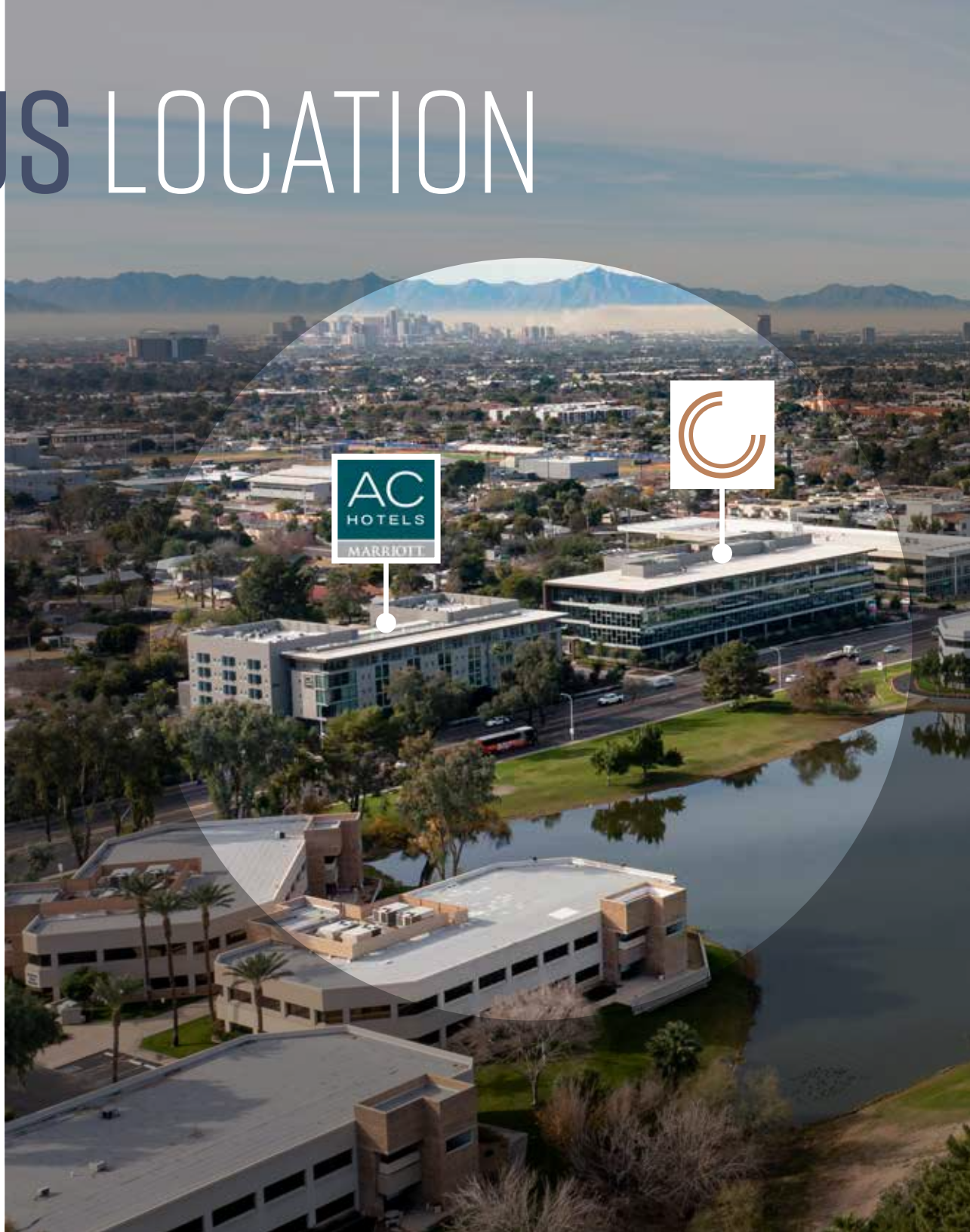
SWEEPING
MOUNTAIN VIEWS



ACCESS TO EXECUTIVE &
WORKFORCE HOUSING



ABUNDANT
RESTAURANTS & BARS





RESTAURANT



IMPECCABLE SYNERGIES

Tenants at Camelback Collective benefit from the AC Hotel by Marriott, which has facing lobbies across a shared entry drive. This upper-tier lifestyle hotel is ranked in the top 10 hotels in metro Phoenix and provides Camelback Collective tenants with a place to meet for coffee, cocktails and light bites, additional meeting space, and convenience for visiting clients and employees.

CONFERENCE CENTER



FITNESS CENTER



BAR & LOUNGE





TOP 10 HOTELS IN METRO PHOENIX

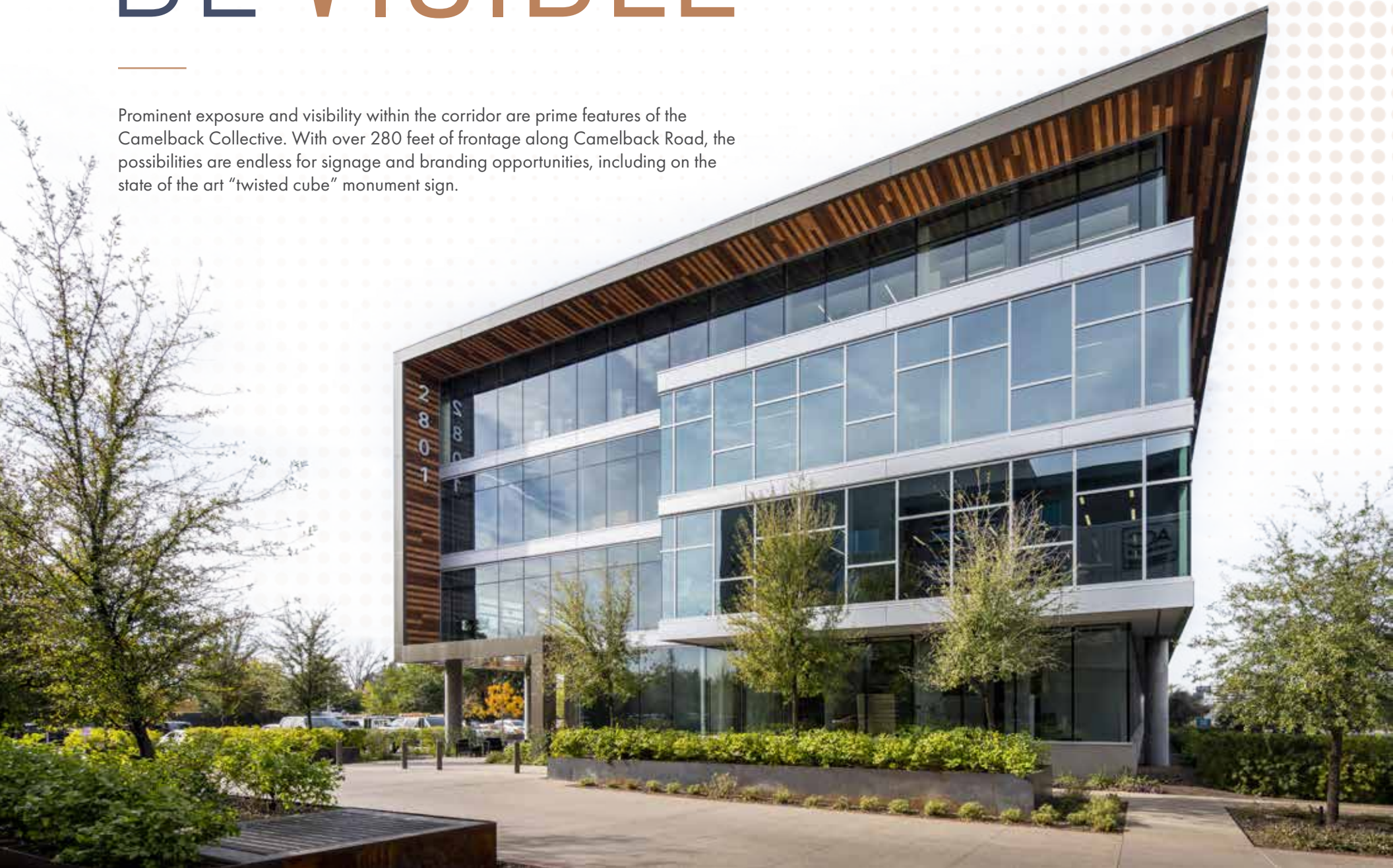
Ranked by TripAdvisor

PROMINENT EXPOSURE



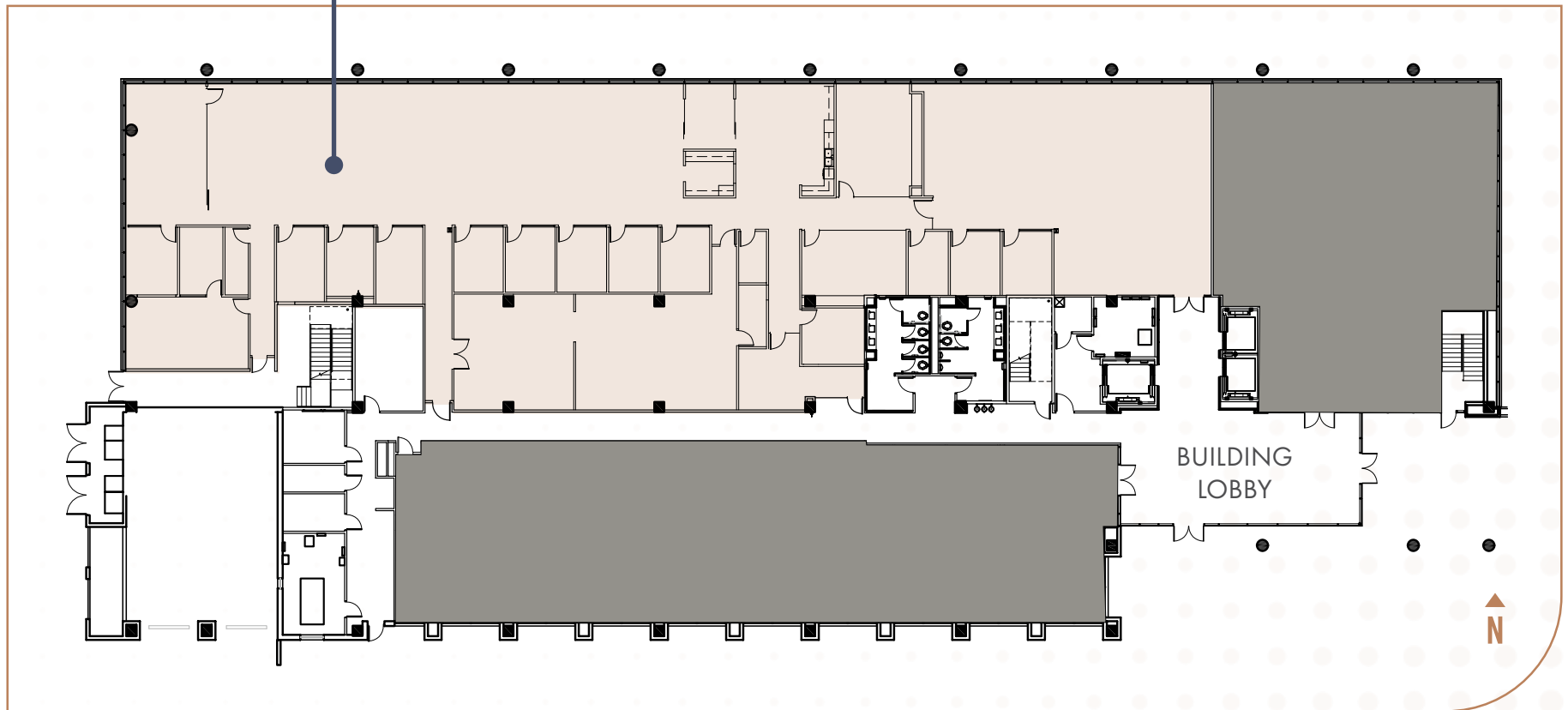
BE VISIBLE

Prominent exposure and visibility within the corridor are prime features of the Camelback Collective. With over 280 feet of frontage along Camelback Road, the possibilities are endless for signage and branding opportunities, including on the state of the art "twisted cube" monument sign.



CURRENT AVAILABILITY

SUITE 180: ±13,115 RSF



- EXPOSURE TO BUILDING LOBBY
- ±15 FOOT CEILING HEIGHT
- ABUNDANT NATURAL LIGHT
- NORTHERN/CAMELBACK MOUNTAIN VIEWS
- MONUMENT SIGNAGE OPPORTUNITY
- DIRECT ACCESS TO UNDERGROUND PARKING GARAGE

CORPORATE NEIGHBORS

JOIN THE VALLEY'S MOST ACCLAIMED COMPANIES

Humana.



DORSEY
DORSEY • WHITNEY LLP

FENNEMORE CRAIG
ATTORNEYS



J.P.Morgan



CBRE

CLAYCO



GT GreenbergTraurig

charles **SCHWAB**



PERKINS COIE
COUNSEL TO GREAT COMPANIES

WINE & DINE WITH EASE

Camelback Collective offers convenient access to vibrant amenities. Just steps away is Biltmore Fashion Park, home to a vast collection of high-end shopping, dining, and entertainment such as Saks Fifth Avenue, Macy's, Lululemon, Williams Sonoma, and Pottery Barn.



STATE-OF-THE-ART LIFETIME FITNESS



5 MIN WALK FROM CAMELBACK COLLECTIVE



THE
CAPITAL
GRILLE

True Food
kitchen

THE TAVERN

néktər
JUICE BAR

The Collins

HILLSTONE
RESTAURANT GROUP

AUTHENTIC ITALIAN
POMO
PIZZERIA NAPOLETANA

BLANCO
TACOS • TEQUILA

KEEGAN'S

CHELSEA'S
KITCHEN

TRATTO



Tarbell's



THE MACINTOSH

THE
parlor



BISUTORO
— Sushi • Bar • Grill —

Snooze
AN A.M. EATERY

hopdoddy
BURGER BAR

THE
GLADLY



FLINT
BY BALTAIRE

SERIAL KITCHEN
Hearsay

Noble
EATERY



CAMELBACK MOUNTAIN

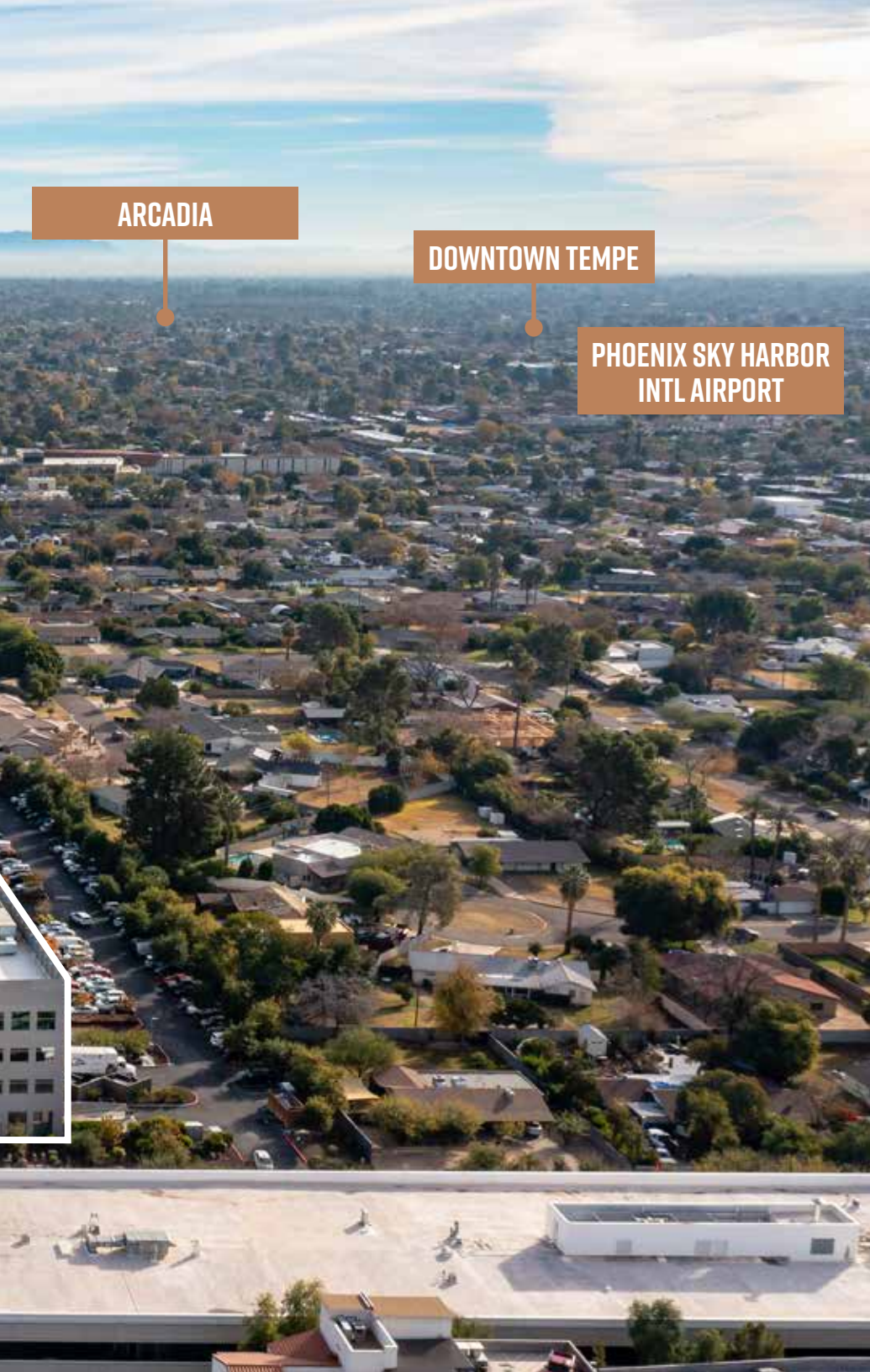
DOWNTOWN SCOTTSDALE

PARADISE VALLEY



CAMELBACK ROAD

28TH STREET



ARCADIA

DOWNTOWN TEMPE

PHOENIX SKY HARBOR
INTL AIRPORT

EXCEPTIONAL ACCESSIBILITY

12 MINS

DOWNTOWN SCOTTSDALE

12 MINS

SKY HARBOR AIRPORT

15 MINS

DOWNTOWN PHOENIX

16 MINS

DOWNTOWN TEMPE

Approximate Travel Times

UNMATCHED AMENITIES

WITHIN 2 MILES OF CAMELBACK COLLECTIVE...



250+
RESTAURANTS & BARS



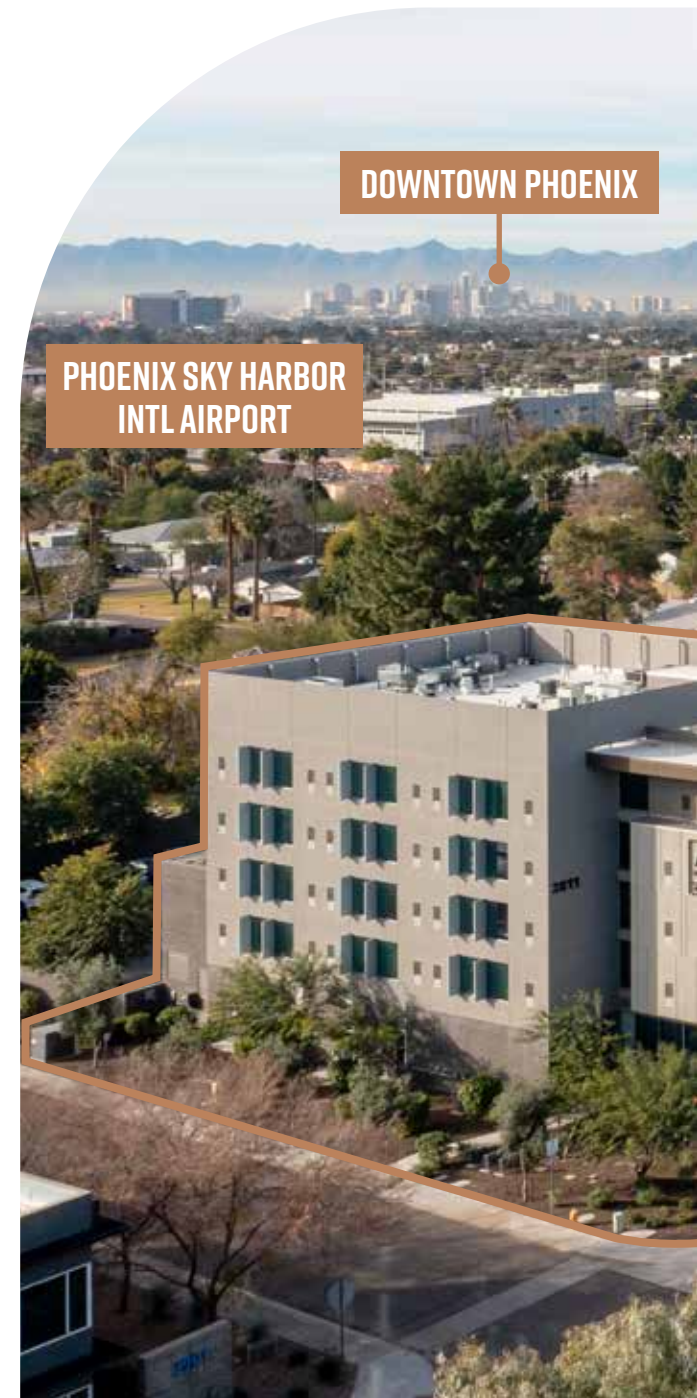
20+
HOTELS

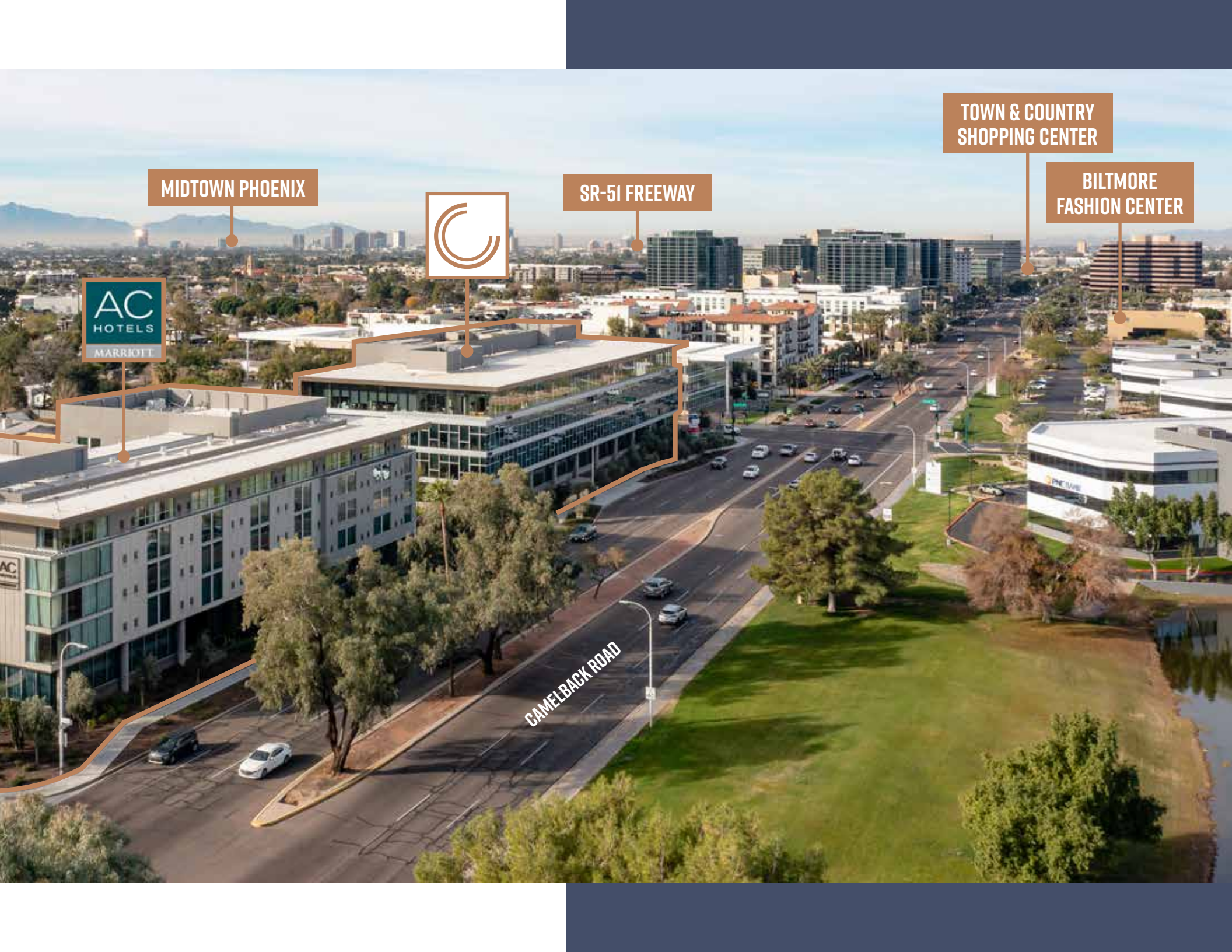


40+
HIGH-END SHOPS



10+
FITNESS CENTERS





MIDTOWN PHOENIX



SR-51 FREEWAY

TOWN & COUNTRY
SHOPPING CENTER

BILTMORE
FASHION CENTER



CAMELBACK ROAD



CAMELBACK COLLECTIVE

FOR LEASING INFORMATION:

PAT BOYLE

+1 602 423 1905

pat.boyle@cbre.com

ERIN YORK

+1 602 689 6440

erin.york@cbre.com

CBRE