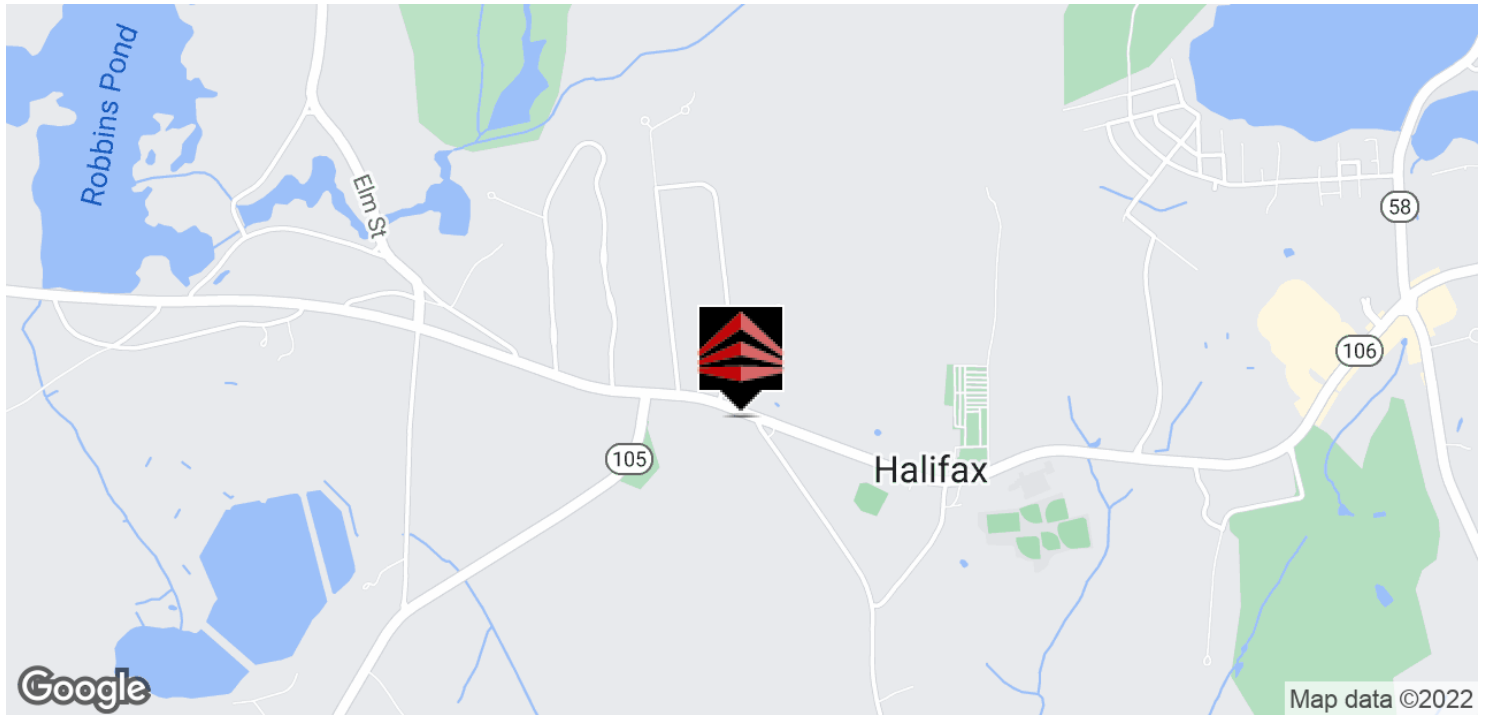




# 0-592 PLYMOUTH STREET, HALIFAX, MA

FOR SALE APPROVED RETAIL/OFFICE BUILDING



## OFFERING SUMMARY

Sale Price: \$748,000

Lot Size: 0.9 Acres

Price / Acre: \$831,111

Zoning: Commercial B

## PROPERTY OVERVIEW

Land for Sale 0.9 Acres (Two lots)  
Approved 2 Story 4,950 SF Retail/Office Building

## PROPERTY HIGHLIGHTS

- Land for Sale (Two lots)
- Approved 2 Story 4,950 SF Retail/Office Building
- Lot with "Red House" \$449,000
- Additional Lot \$299,000

**BEN STOUT, CCIM**

bstout@atlanticproperties.com  
O: 508.746.2500 X202

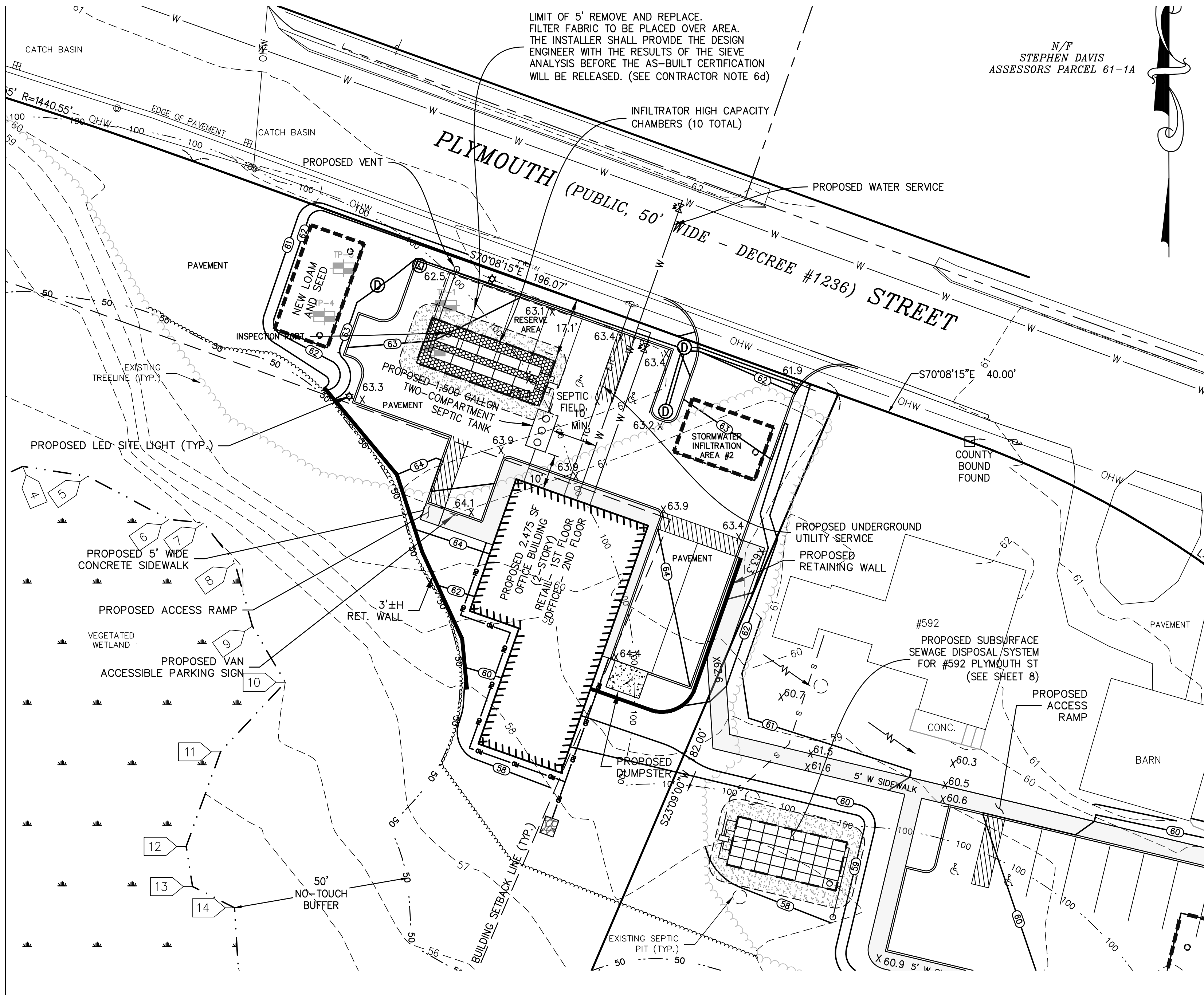
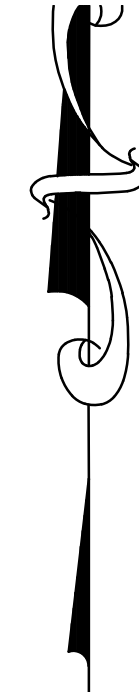
**ANDREW STOUT**

afstout@atlanticproperties.com  
O: 508.591.8261

 ATLANTIC PROPERTIES

LIMIT OF 5' REMOVE AND REPLACE.  
 FILTER FABRIC TO BE PLACED OVER AREA.  
 THE INSTALLER SHALL PROVIDE THE DESIGN  
 ENGINEER WITH THE RESULTS OF THE SIEVE  
 ANALYSIS BEFORE THE AS-BUILT CERTIFICATION  
 WILL BE RELEASED. (SEE CONTRACTOR NOTE 6d)

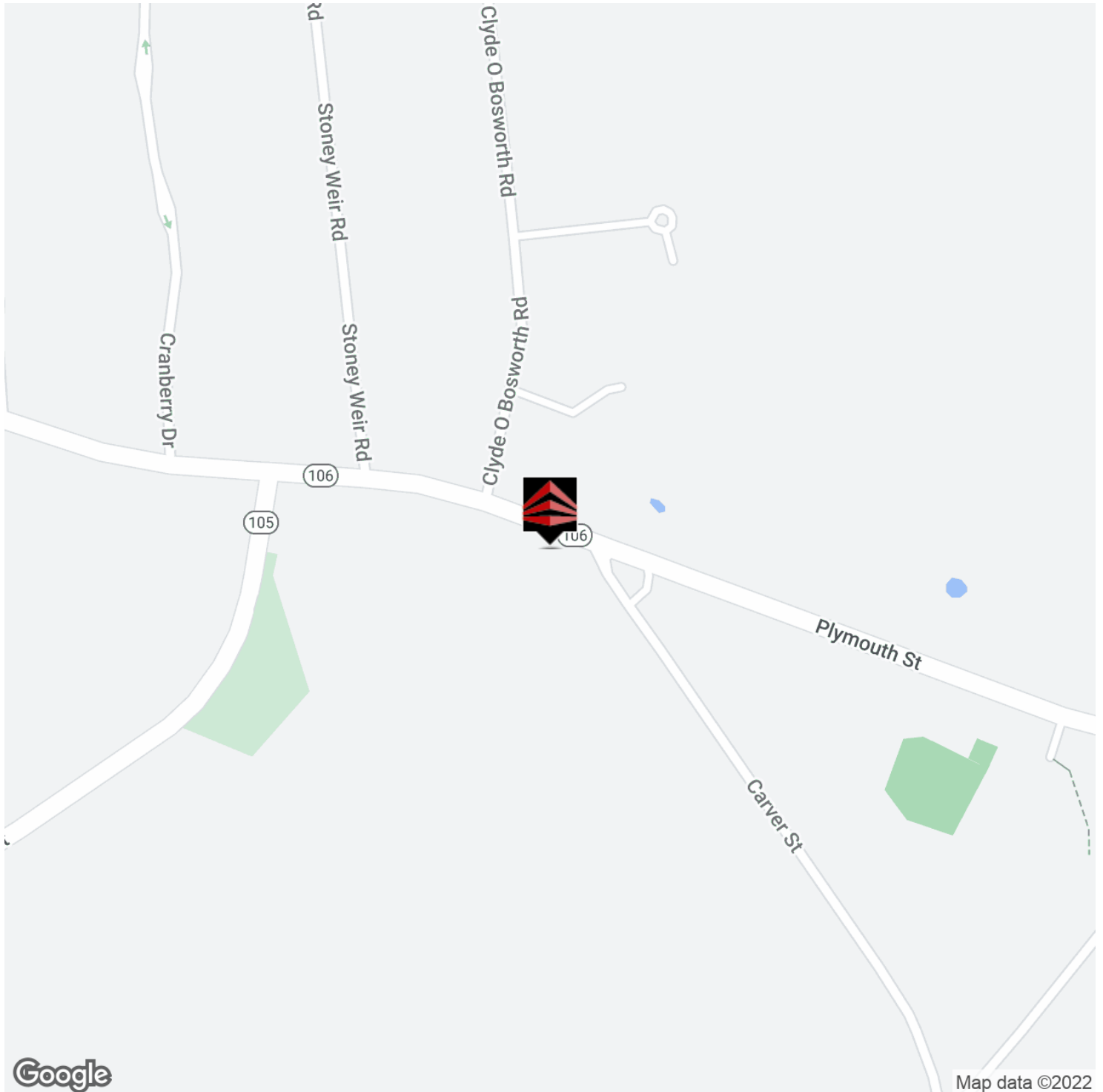
N/F  
 STEPHEN DAVIS  
 ASSESSORS PARCEL 61-1A





# 0-592 PLYMOUTH STREET, HALIFAX, MA

FOR SALE APPROVED RETAIL/OFFICE BUILDING



**BEN STOUT, CCIM**

bstout@atlanticproperties.com  
O: 508.746.2500 X202

**ANDREW STOUT**

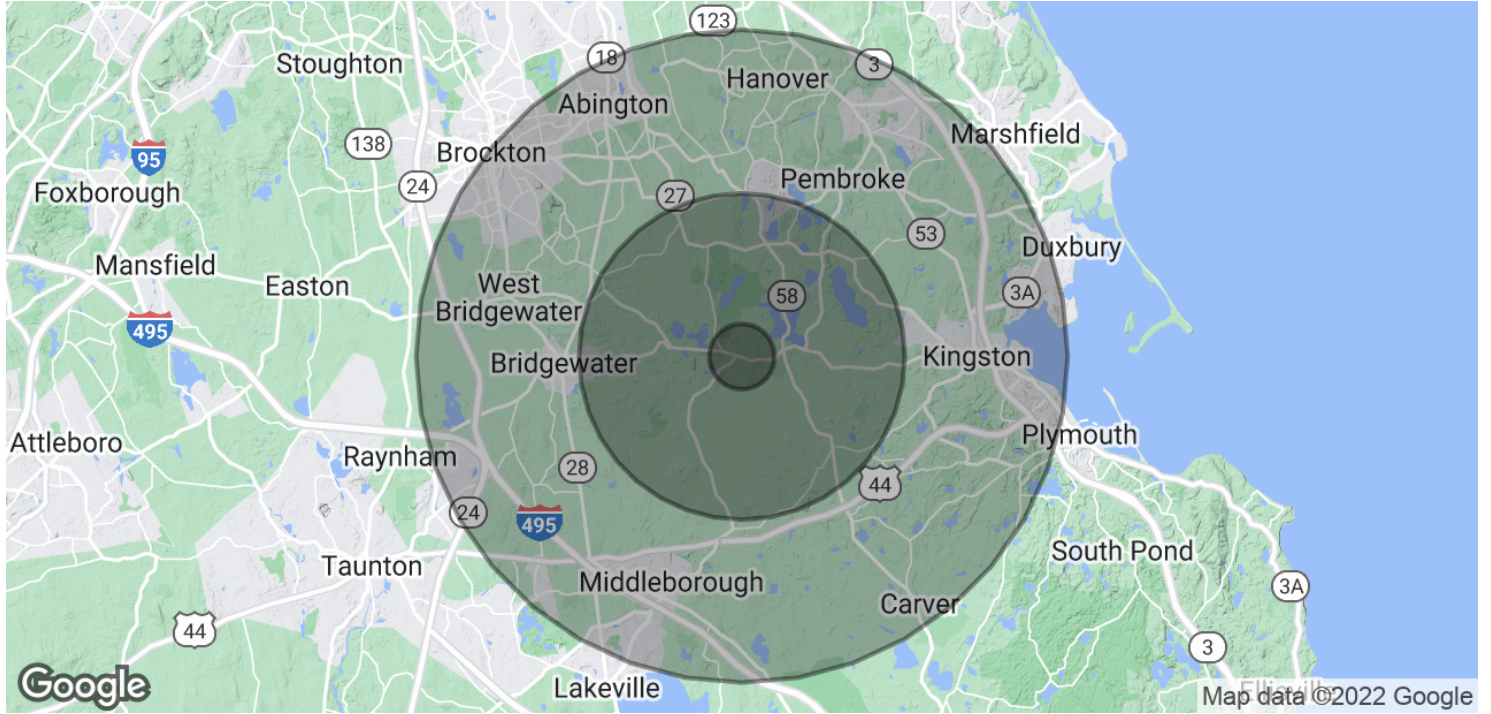
afstout@atlanticproperties.com  
O: 508.591.8261

 **ATLANTIC PROPERTIES**



# 0-592 PLYMOUTH STREET, HALIFAX, MA

FOR SALE APPROVED RETAIL/OFFICE BUILDING



POPULATION	1 MILE	5 MILES	10 MILES
Total Population	1,355	38,999	216,505
Average Age	42.9	40.9	39.1
Average Age (Male)	41.3	39.7	37.8
Average Age (Female)	43.8	41.2	39.0

HOUSEHOLDS & INCOME	1 MILE	5 MILES	10 MILES
Total Households	504	13,698	74,190
# of Persons per HH	2.7	2.8	2.9
Average HH Income	\$90,373	\$90,204	\$88,853
Average House Value	\$342,339	\$365,229	\$387,010

**BEN STOUT, CCIM**  
bstout@atlanticproperties.com  
O: 508.746.2500 X202

**ANDREW STOUT**  
afstout@atlanticproperties.com  
O: 508.591.8261

