



REDBUD LOGISTICS CENTER

1990 West Renaissance Parkway, Rialto, CA

MOVE-IN READY

FOR SALE OR LEASE

±134,256 SF



CLICK OR SCAN
TO VIEW MAP

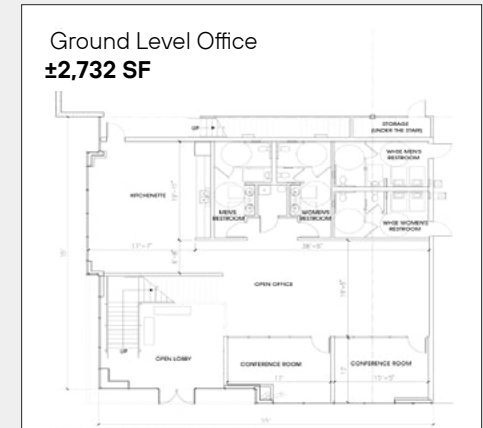
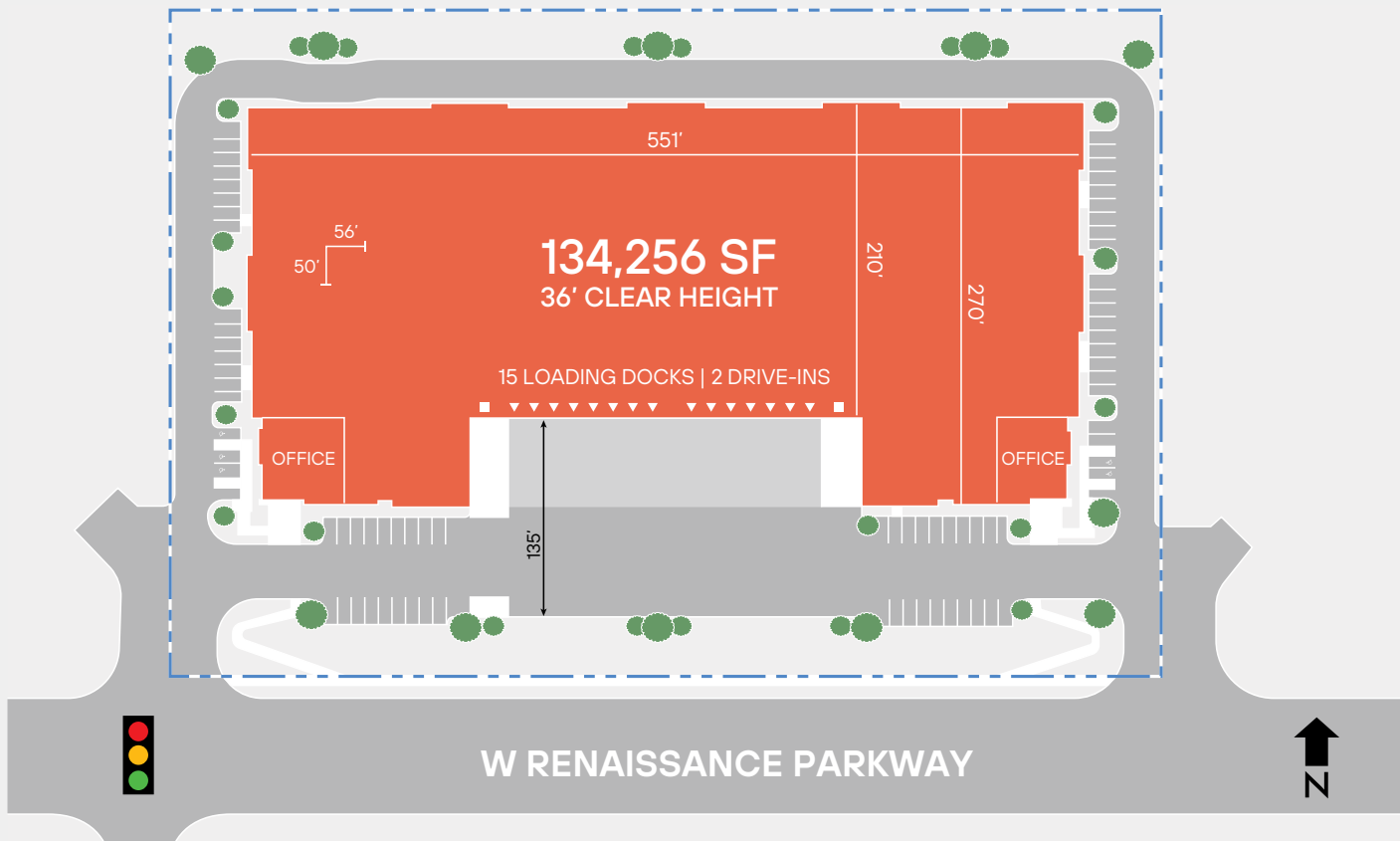


Leasing by:



SITE PLAN & SPECIFICATIONS

±134,256 SF FOR SALE OR LEASE



AVAILABLE SF: ±134,256 SF

BUILDING DIMENSIONS: 551' X 210'

OFFICE: ±2,732SF

MEZZANINE OFFICE: ±2,538 SF

CLEAR HEIGHT: 36'

COLUMN SPACING: 56' x 50'

SPEED BAY 60'

LOADING FORMAT: Front

LOADING DOCKS: 15

DRIVE-IN DOORS: 2

TRUCK COURT DEPTH: 135'

CAR SPACES: ±85

POWER: 1,200 Amp Service with 2,000 UGPS

SPRINKLER SYSTEM: ESRF

LIGHTING: LED

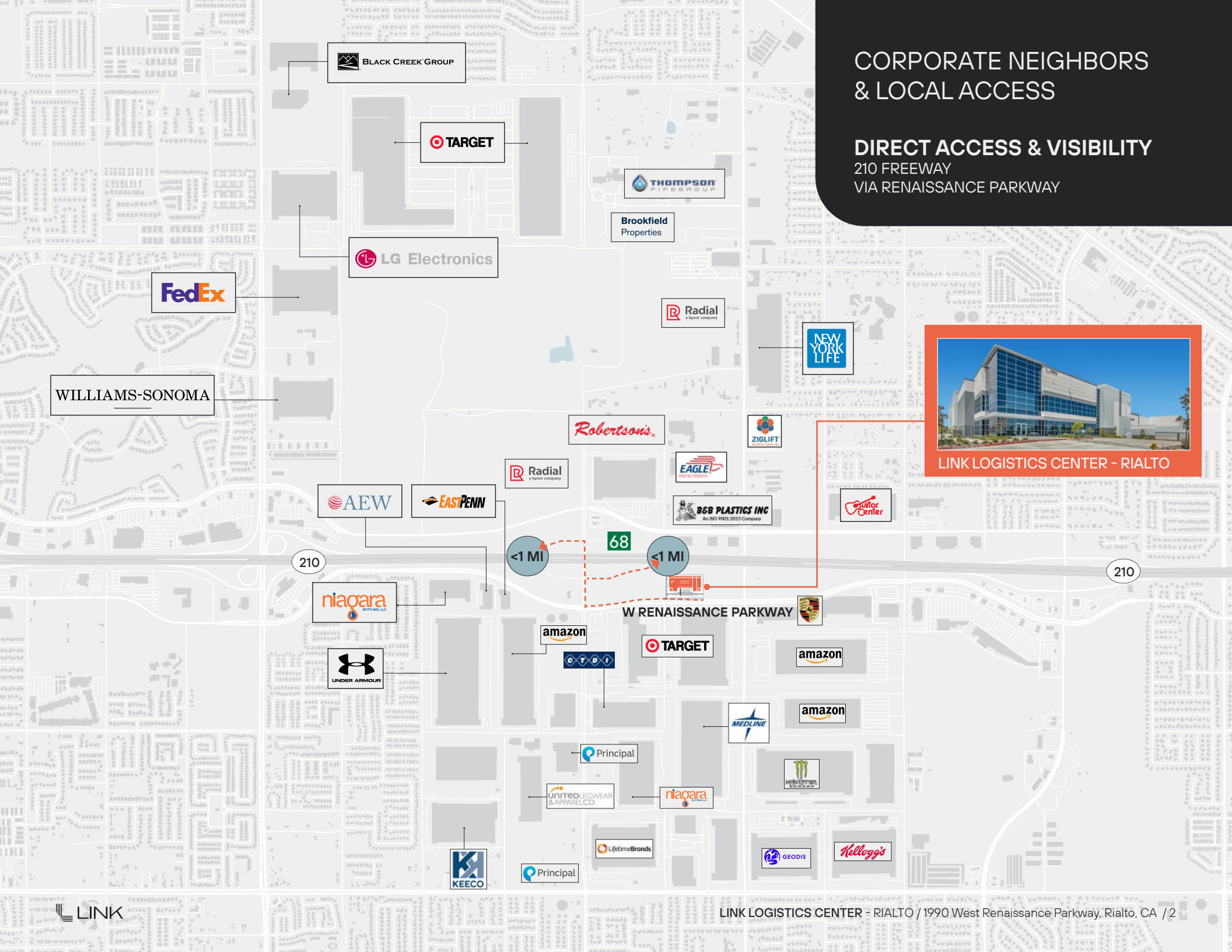
FLOOR: 6" Slab Thickness

SECURITY: Secured Truck Court

CORPORATE NEIGHBORS & LOCAL ACCESS

DIRECT ACCESS & VISIBILITY

210 FREEWAY
VIA RENAISSANCE PARKWAY



BLACK CREEK GROUP

TARGET

THOMPSON PIPE GROUP

Brookfield Properties

LG Electronics

FedEx

Radial a bpost company

NEW YORK LIFE

WILLIAMS-SONOMA

Robertson's

ZIGLIFT

Radial a bpost company

EAGLE

AEW

EAST PENN

B&B PLASTICS INC An ISO 9001:2015 Company

Capital Center

210

<1 MI

68

<1 MI

210

niagara BOTTLING LLC

UNDER ARMOUR

amazon

CTDI

TARGET

W RENAISSANCE PARKWAY

amazon

amazon

MEDLINE

Principal

UNITED LEWEAR & APPAREL CO

niagara

MONSTER ENERGY

KEECO

Principal

Lifetime Brands

GEODIS

Kellogg's



For leasing information, contact:

Bill Heim
 bheim@lee-assoc.com
 909 373-2901
 Lic. #00776174

Alex Heim
 aheim@lee-assoc.com
 909 373-2701
 Lic. #01945521



This is not an offer or acceptance of an offer to lease space. A lease will only be offered or made in a written agreement signed by landlord.

No representation or warranty of any kind is made by landlord unless set forth in a written definitive lease executed by the landlord.

| LOCATION DETAILS | |
|--|-----|
| | MI |
| Ontario International Airport | 15 |
| Port of Long Beach & Port of Los Angeles | 69 |
| Los Angeles International Airport | 69 |
| San Diego International Airport | 117 |

