



## FOR SUBLEASE

LEASE EXPIRES ON SEPTEMBER 30, 2027  
FF&E is available for Sale

## DUBLIN PROFESSIONAL CENTER ±1,442 SF DENTAL OFFICE SPACE AVAILABLE

7600 DUBLIN BLVD., SUITE 150, DUBLIN, CA 94568

LOCAL EXPERTISE. INTERNATIONAL REACH. WORLD CLASS.

**Mark Rinkle**

Principal  
mrinkle@lee-associates.com  
925-737-4145  
LIC NO 01512632

**Kirsten Johnsen**

Associate  
kjohnsen@lee-associates.com  
925-519-7818  
LIC NO 02133540



## PROPERTY HIGHLIGHTS



VIRTUAL TOUR



Located at the Dublin Professional Center



Suite 150: ±1,442 SF Dental Office space



Suite includes a reception/waiting room, doctor's office, one (1) office/consult, one (1) private operator, three (3) open operatories, lab/sterilization room, and a storage/server room



Free parking



Easy access and proximity to I-580 & I-680



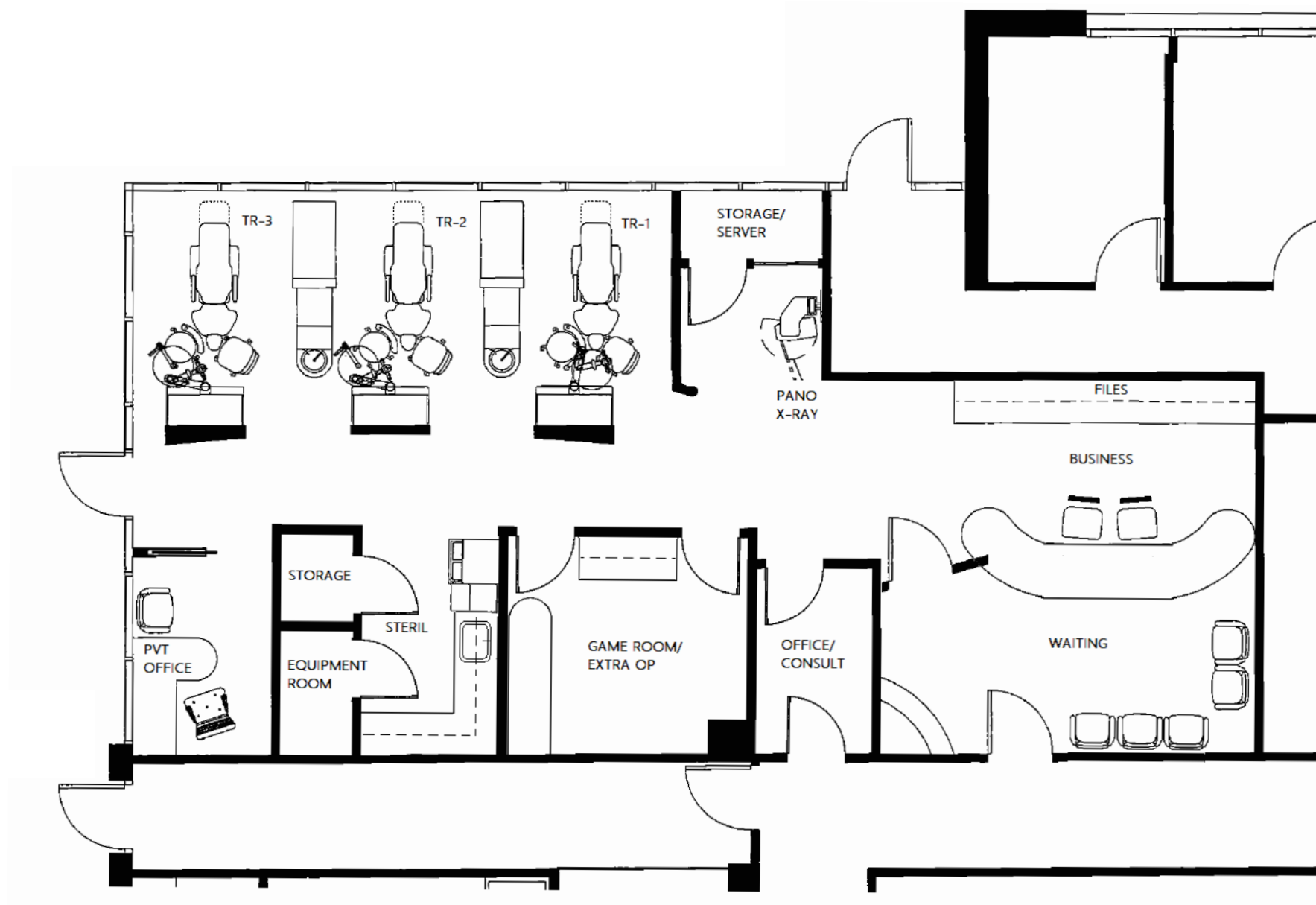
Asking rent: \$4.15/sf/month Gross  
FF&E is available for Sale



LED: September 30, 2027

# 7600 DUBLIN BLVD.

# FLOOR PLAN



\*FLOOR PLAN NOT TO SCALE

7600  
DUBLIN BLVD.



# SUITE 150 GALLERY





# SUITE 150 GALLERY





# FOR SUBLEASE

## ±1,442 SF DENTAL OFFICE SPACE AVAILABLE

7600 DUBLIN BLVD., SUITE 150 | DUBLIN, CA 94568



**Mark Rinkle**

Principal

[mrinkle@lee-associates.com](mailto:mrinkle@lee-associates.com)

925-737-4145

LIC NO 01512632



**Kirsten Johnsen**

Associate

[kjohnsen@lee-associates.com](mailto:kjohnsen@lee-associates.com)

925-519-7818

LIC NO 02133540

All information furnished regarding property for sale, rental or financing is from sources deemed reliable, but no warranty or representation is made to the accuracy thereof and same is submitted to errors, omissions, change of price, rental or other conditions prior to sale, lease or financing or withdrawal without notice. No liability of any kind is to be imposed on the broker herein.

Lee & Associates® East Bay, Inc. | Corp. ID 01194869 | 5000 Pleasanton Ave, Suite 220, Pleasanton, CA 94566

[LEE-ASSOCIATES.COM](http://LEE-ASSOCIATES.COM)

# 7600 DUBLIN BLVD.