

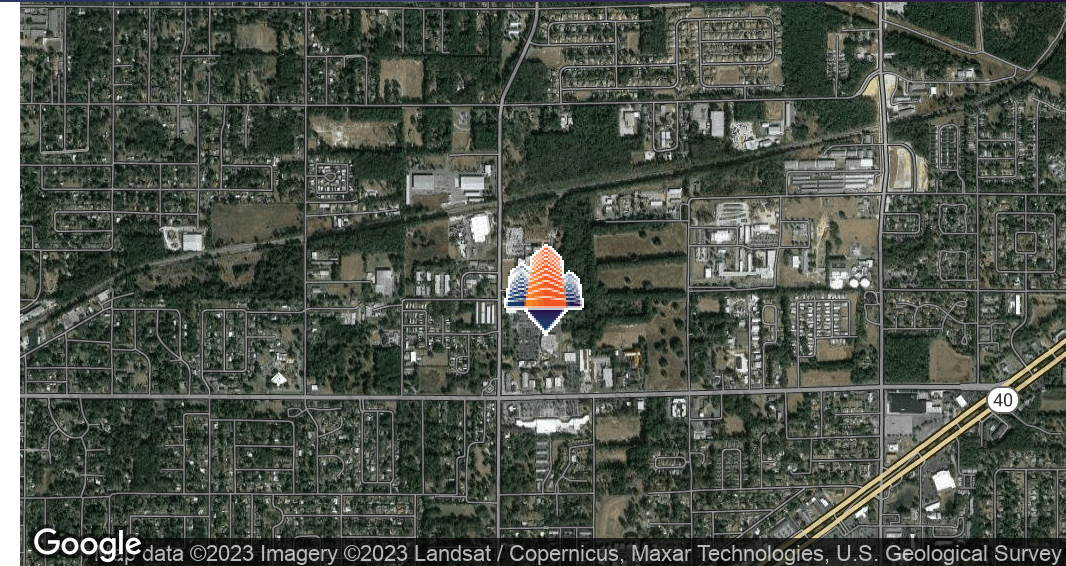
Skylark Plaza

1601 NE 25th Ave, Ocala, FL 34470



EQUITY
INVESTMENT
SERVICES

PROPERTY SUMMARY



PROPERTY HIGHLIGHTS

- 4,387 SF and 7,500 SF Spaces Available
- Ideal for Tenant with Government & Education Uses
- Plentiful Parking
- Access from NE 25th Avenue and NE 14th Street
- 3 Mile Population: 40,000+
- Aggressive Lease Rates & Other Tenant Incentives

OFFERING SUMMARY

Lease Rate:	Negotiable
Available SF:	4,387 - 7,500 SF
Building Size:	87,289 SF

DEMOGRAPHICS	1 MILE	3 MILES	5 MILES
Total Households	3,031	16,644	32,103
Total Population	7,145	40,121	80,862
Average HH Income	\$38,127	\$53,860	\$55,221

Nick Barbato

954.579.2672

nbarbato@eisre.com

Ryan D'Agostino

954.336.3615

rdagostino@eisre.com



7575 Dr. Phillips Blvd, Ste 390

Orlando, FL 32819

www.eisre.com

Skylark Plaza

1601 NE 25th Ave, Ocala, FL 34470



EQUITY
INVESTMENT
SERVICES

PROPERTY PHOTO



Nick Barbato

954.579.2672

nbarbato@eisre.com

Ryan D'Agostino

954.336.3615

rdagostino@eisre.com



7575 Dr. Phillips Blvd, Ste 390

Orlando, FL 32819

www.eisre.com

Skylark Plaza

1601 NE 25th Ave, Ocala, FL 34470



EQUITY
INVESTMENT
SERVICES

SITE PLAN



Nick Barbato
954.579.2672
nbarbato@eisre.com

Ryan D'Agostino
954.336.3615
rdagostino@eisre.com



7575 Dr. Phillips Blvd, Ste 390
Orlando, FL 32819
www.eisre.com

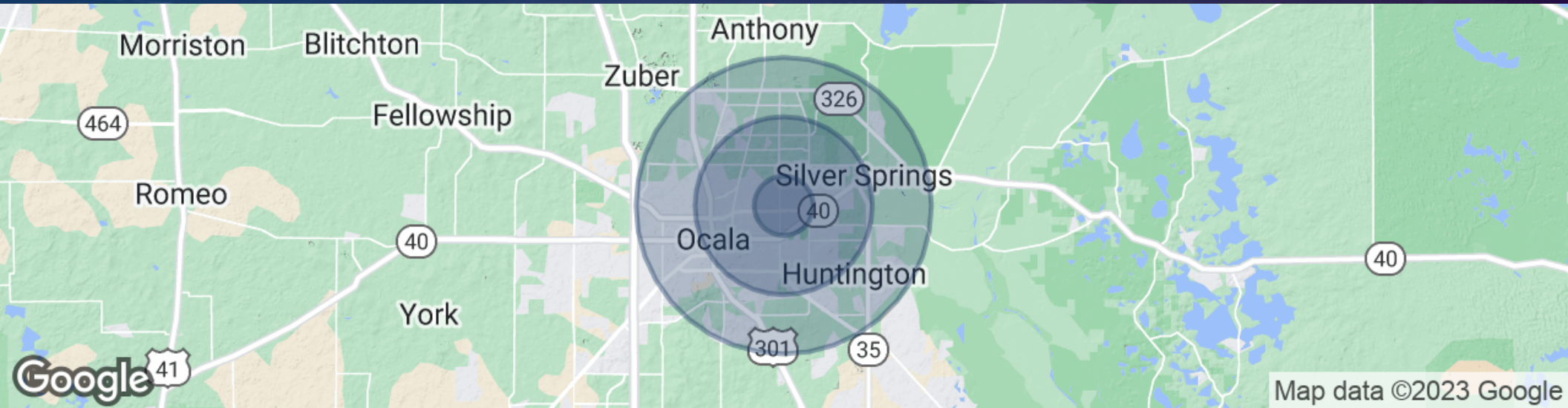
Skylark Plaza

1601 NE 25th Ave, Ocala, FL 34470



EQUITY
INVESTMENT
SERVICES

DEMOGRAPHICS MAP & REPORT



POPULATION

	1 MILE	3 MILES	5 MILES
Total population	7,145	40,121	80,862
Median age	37.3	41.7	40.4
Median age (Male)	33.1	38.7	38.5
Median age (Female)	41.1	43.8	41.6

HOUSEHOLDS & INCOME

	1 MILE	3 MILES	5 MILES
Total households	3,031	16,644	32,103
# of persons per HH	2.4	2.4	2.5
Average HH income	\$38,127	\$53,860	\$55,221
Average house value	\$110,034	\$169,643	\$185,619

Nick Barbato

954.579.2672

nbarbato@eisre.com

Ryan D'Agostino

954.336.3615

rdagostino@eisre.com



7575 Dr. Phillips Blvd, Ste 390

Orlando, FL 32819

www.eisre.com