



FOR SALE & LEASE
1151 E MCKELLIPS RD
MESA, AZ 85203

Mark Cassell
Partner
480.289.4227
mcassell@levrose.com

Landon McKernan
Partner
480.294.6571
lmckernan@levrose.com

Cameron Miller
Advisor
480.294.6584
cmiller@levrose.com

LEVROSE
COMMERCIAL REAL ESTATE

TCN
COMMERCIAL
REAL ESTATE SERVICES

EXECUTIVE SUMMARY

1151 E. MCKELLIPS RD | MESA, AZ 85203

LevRose Commercial Real Estate is pleased to present the opportunity to acquire or lease the soon to be former CVS on the SWC of Stapley and McKellips Road in Mesa, AZ for \$3,750,000. The property sees over 50,000 vehicles per day, is adjacent to a Fry's anchored center, and is close to the Loop 202 and US-60 freeways. The property is also available for lease at \$20/SF NNN.



OFFERING DETAILS



SALE PRICE:
\$3,750,000



LEASE RATE:
\$20/SF NNN
(Estimated NNNs are \$6-7/SF)



BUILDING SIZE:
±13,050 SF



AVAILABLE:
±13,050 SF



LOT SIZE:
±85,268



PARCEL:
136-25-698Q &
136-25-698N



ZONING:
LC, Mesa

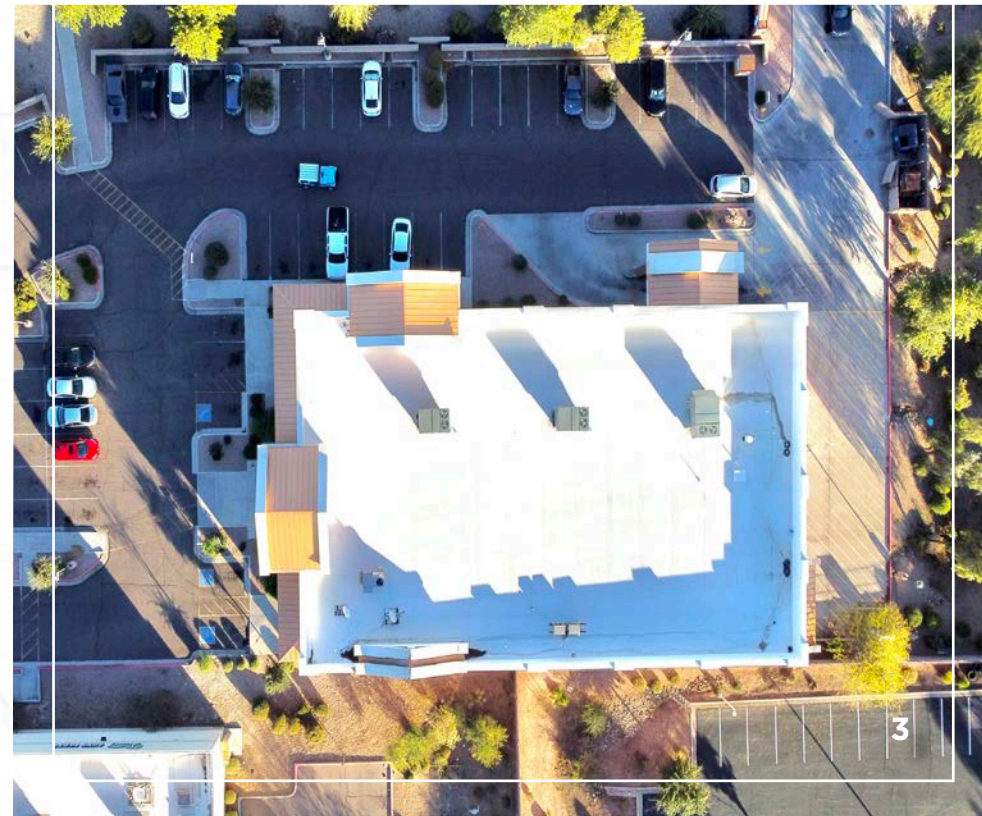


YEAR BUILT:
2004

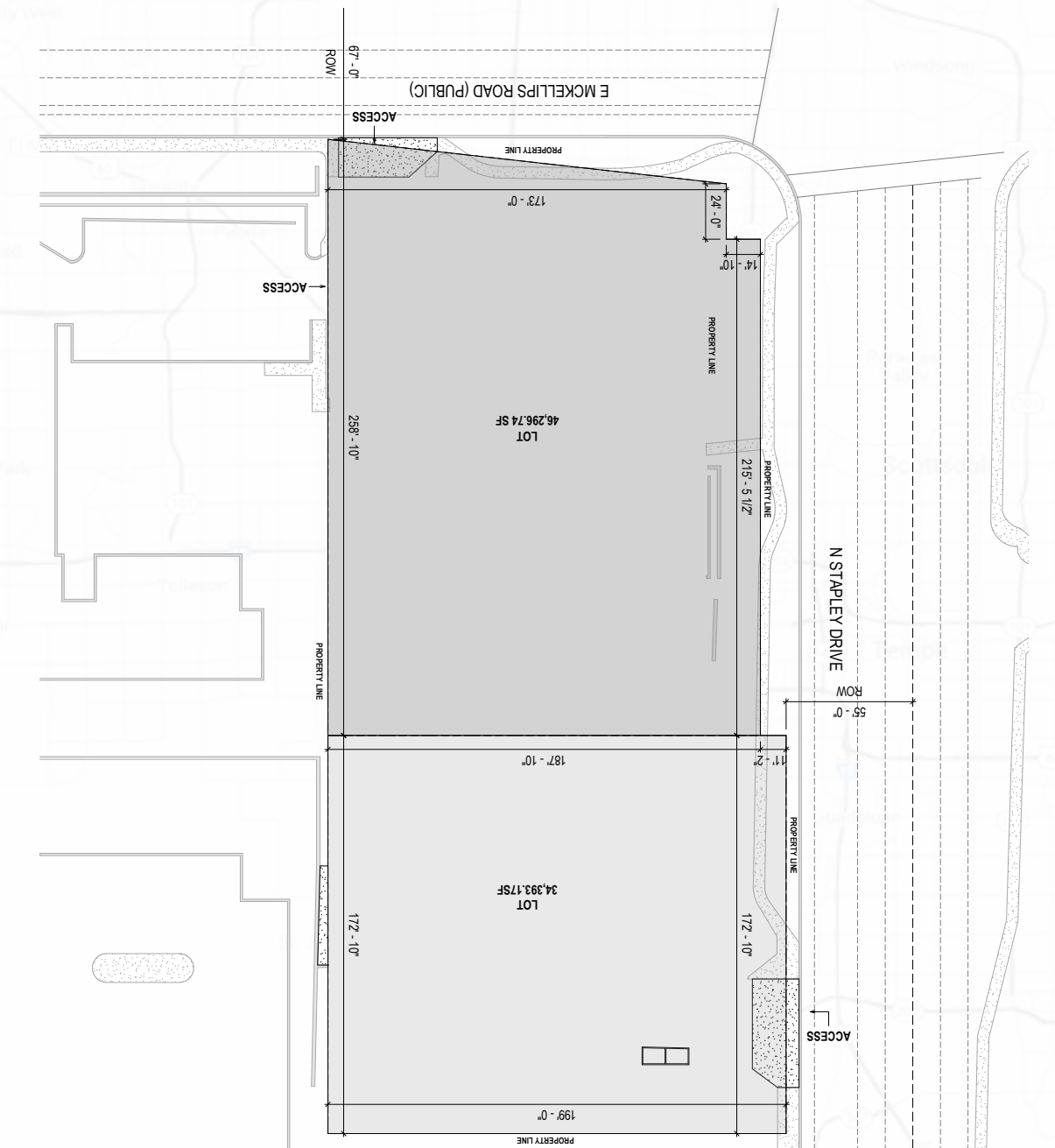


PROPERTY HIGHLIGHTS

- Hard Corner
- ±51,571 vehicles per day
- Drive Through Included
- \$96,000 Average HH Income in a 1 mi radius
- Across from a Fry's Anchored Center



SITE PLANS



This information has been secured from sources believed to be reliable, but no representations or warranties are made, expressed or implied, as to the accuracy of the information. References to square footage are approximate. Buyer and tenant must verify the information and bears all risk for any inaccuracies. All quoted prices are subject to change without notice.

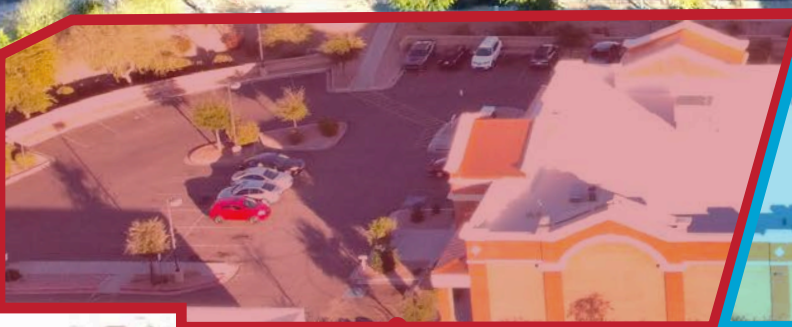
ADDITIONAL AERIAL OVERVIEW



E MCKELLIPS RD
VPD: ±30,538



N STAPLEY DR | VPD: ±16,677



PARCEL:
136-25-698N



PARCEL:
136-25-698Q

AERIAL OVERVIEW



Walmart

O'Reilly AUTO PARTS
PROFESSIONAL PARTS PEOPLE

E MCKELLIPS RD | VPD: ±30,538

SITE

S STAPLEY DR | VPD: ±16,677

Banfield PET HOSPITAL
ANYTIME FITNESS
Fry's
CHIPOTLE MEXICAN GRILL

DEMOGRAPHICS



POPULATION

	1 MILE	3 MILES	5 MILES
2023	12,618	110,544	257,403
2028	12,444	112,272	260,140



EMPLOYMENT

	1 MILE	3 MILES	5 MILES
2023	2,612	33,833	100,507



HOUSEHOLDS

	1 MILE	3 MILES	5 MILES
2023	4,480	39,376	92,944
2028	4,415	40,094	94,115



BUSINESSES

	1 MILE	3 MILES	5 MILES
2023	390	2,929	8,163



AVERAGE INCOME

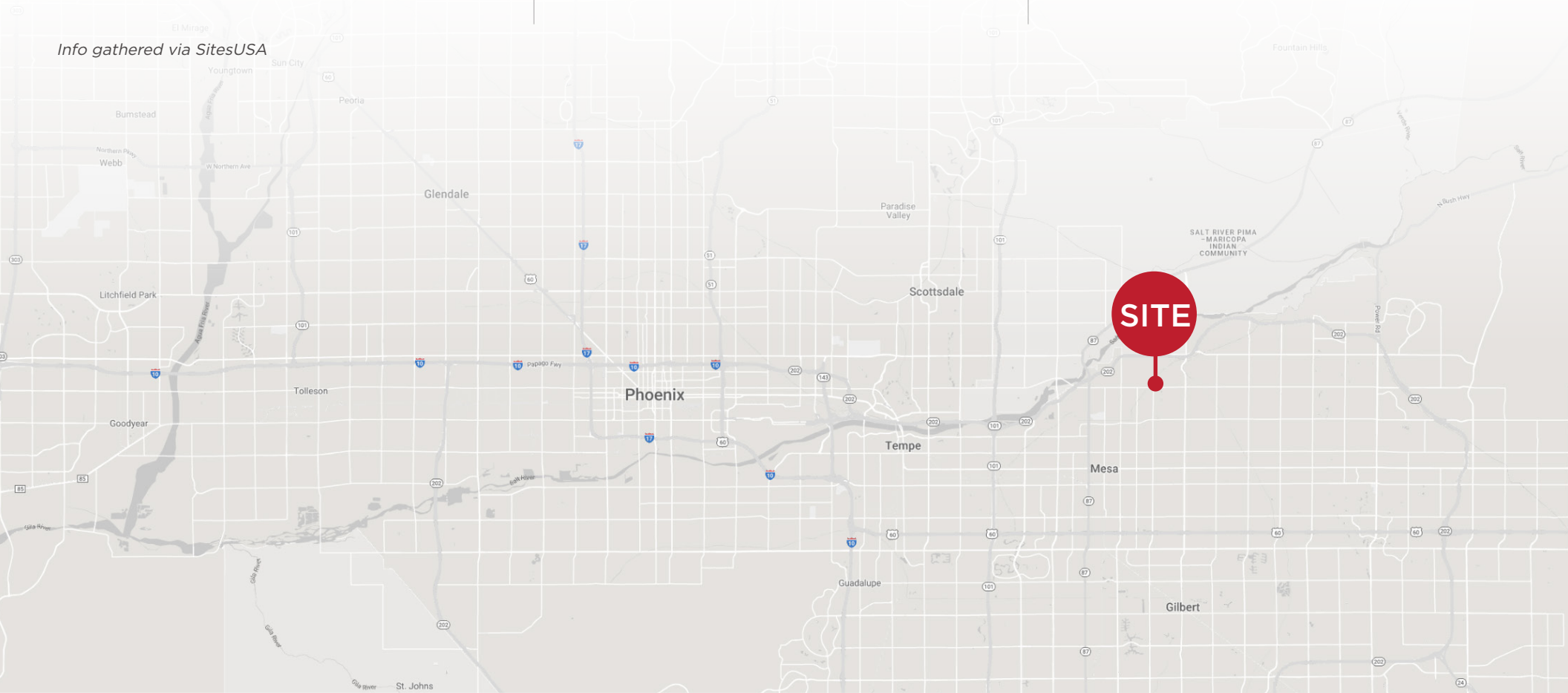
	1 MILE	3 MILES	5 MILES
2023	\$96,650	\$78,015	\$72,921



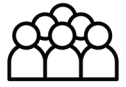
MEDIAN INCOME

	1 MILE	3 MILES	5 MILES
2023	\$75,978	\$56,822	\$54,405

Info gathered via SitesUSA



MESA CITY OVERVIEW



504K +
TOTAL POPULATION



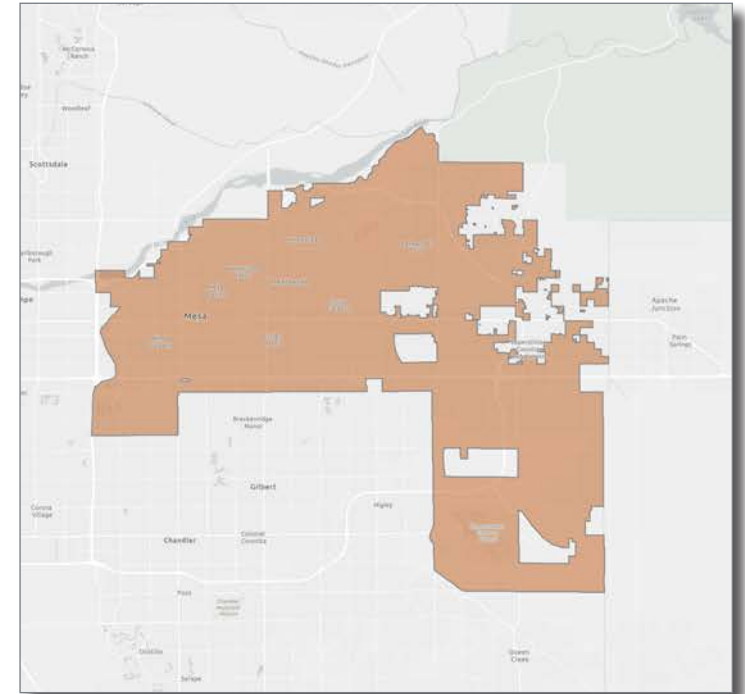
\$94K +
AVG HH INCOME

LIVELY CITY

Mesa, Arizona is the 35th largest city in the United States and the 3rd largest city in the state of Arizona. The city is easily accessible via a robust freeway system and also is part of the light rail system with stops extending from Downtown to Gilbert. There are more than 40 golf courses, 66 outdoor parks, 14 art studios, 65 hotels and resorts, over 3,000 restaurants, and miles of hiking/biking trails. Mesa is home to some of the best Spring Training baseball in the nation, with the Chicago Cubs and Oakland A's calling the city home for training.

HOUSEHOLDS AND EMPLOYMENT

Mesa currently has over 191,000 households and over 245,000 employees serving the city. The diverse business community has a strong competitive advantage in the healthcare, education, aerospace, technology, and tourism sectors. The city was ranked 6th best for businesses in Arizona according to Chief Executive Magazine in 2016 and continues to see growth in population and new businesses.





LEV ROSE
COMMERCIAL REAL ESTATE

TCN
WORLDWIDE
REAL ESTATE SERVICES