

LOGISTICS/WAREHOUSE OPPORTUNITY

70 Houghton Street - Providence, RI 02904

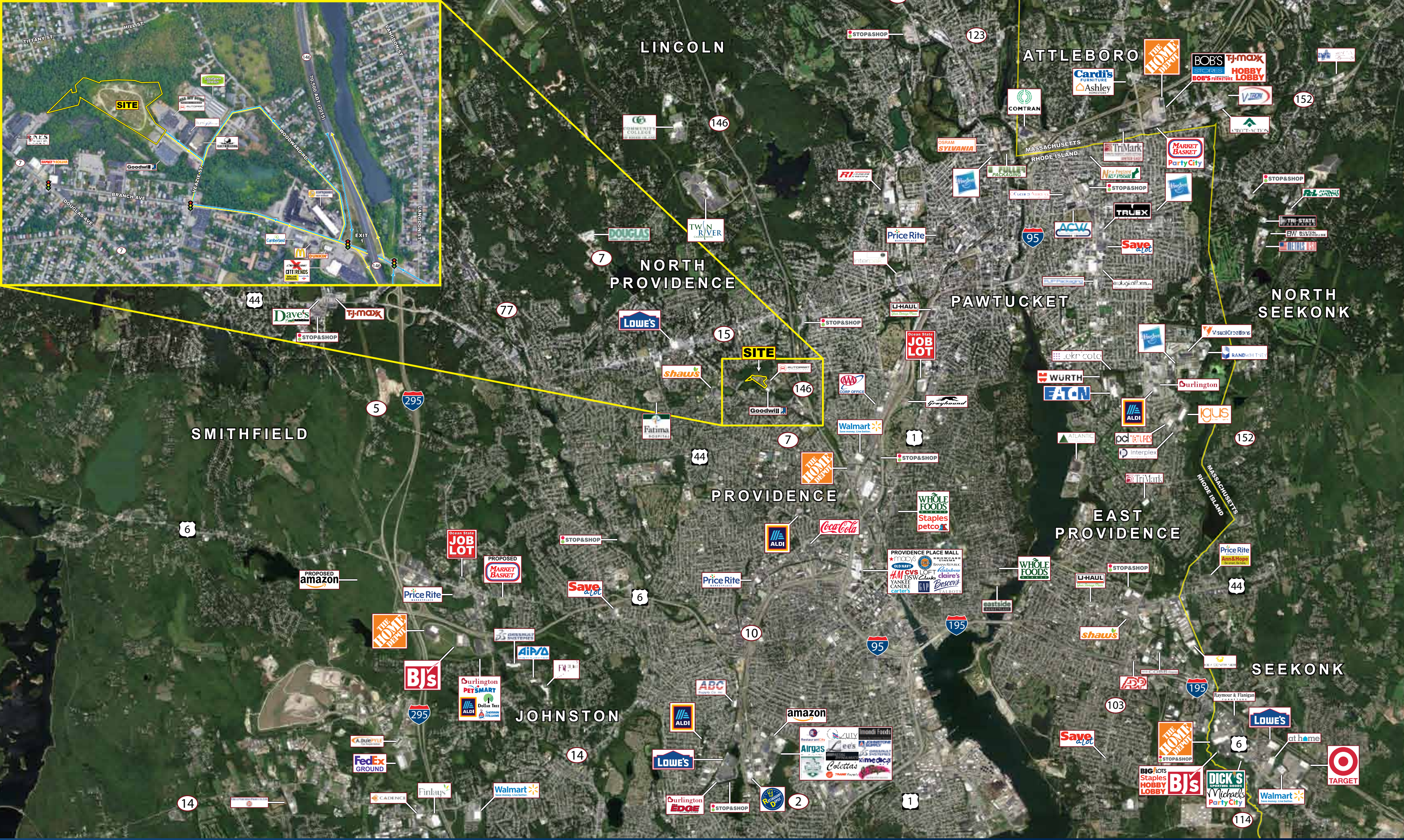


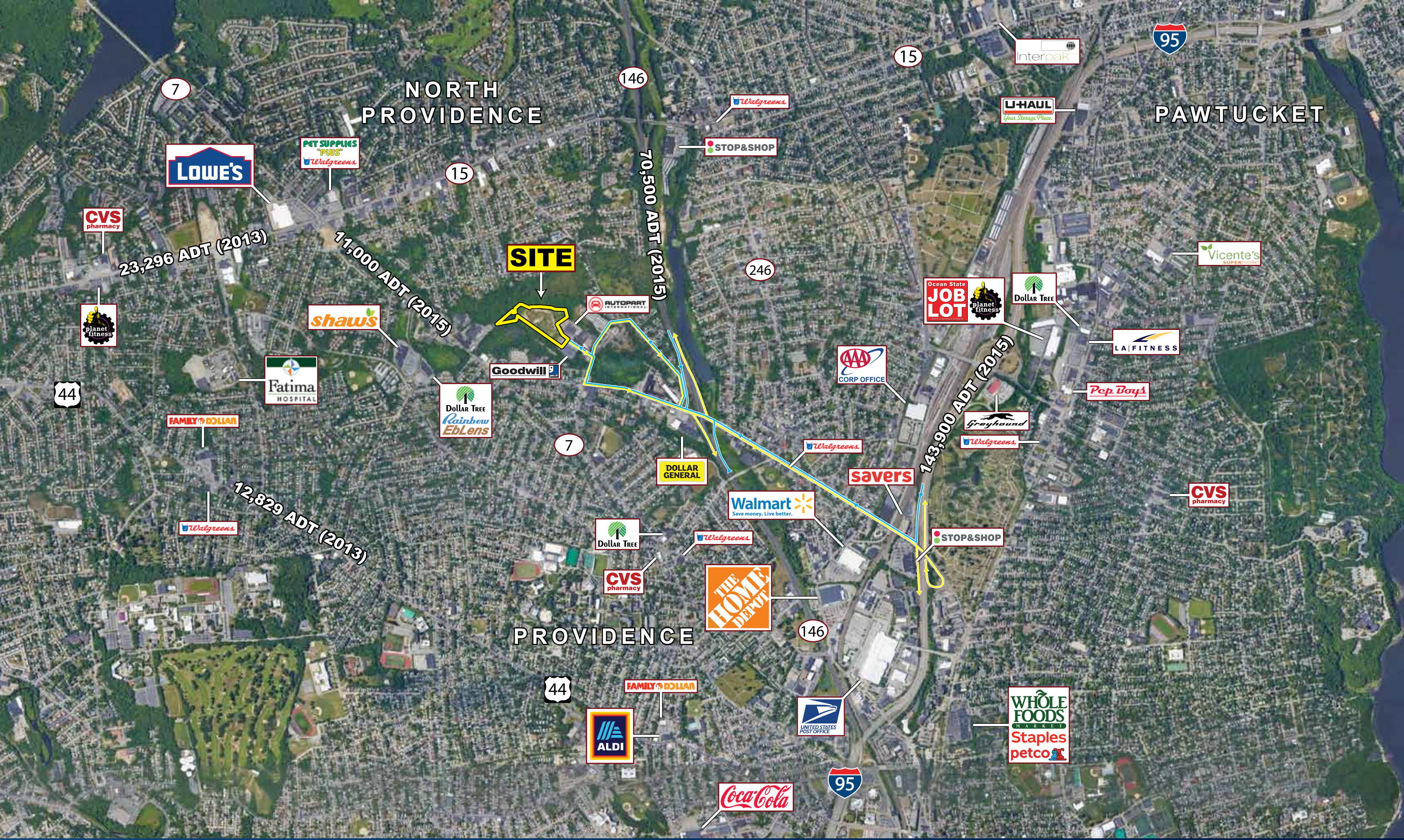
- Ground Lease or Build-to-Suit
- 9.07 Acres / Up to 80,000 SF
- 1.7 Miles to I-95 @ Exit 24
- Zoned Mixed Use Industrial District
- Several Configurations Available
- Multiple Uses Allowed
- 10 Mile Population - 694,686
- I-95 - 1.7 Miles / 6 Minutes
- Route 146 - 0.7 Mile / 3 Minutes
- Route 44 - 0.6 Mile / 2 Minutes
- Route 15 - 1 Mile / 3 Minutes
- All Utilities Available

- Available: Up to 80,000 SF
- Loading Configuration: Build-to-Suit
- Office Size: Build-to-Suit
- Building: 150' x 500' / 200' x 400'
- Fleet Parking: Build-to-Suit
- Trailer Parking: Build-to-Suit
- Drive-in Doors: Build-to-Suit
- Lighting: LED Fixtures
- Clear Height: Build-to-Suit
- Fire Protection: ESFR
- Zoning: MU-75

Mike Hotarek
mhotarek@easternretail.com
Direct: 781-849-9017











146

70,500 ADT (2015)



SITE

ExtraSpace Storage

ALL MY SONS
MOVING & STORAGE
AUTOPART
INTERNATIONAL
PREMIUM PARTS - EXPERT SERVICE

PRECISION LASER, INC.

illumi gifts .com

ELECTROLIZING INC.

HOUGHTON ST.

WOODWARD RD.

FAMILY DOLLAR

Goodwill

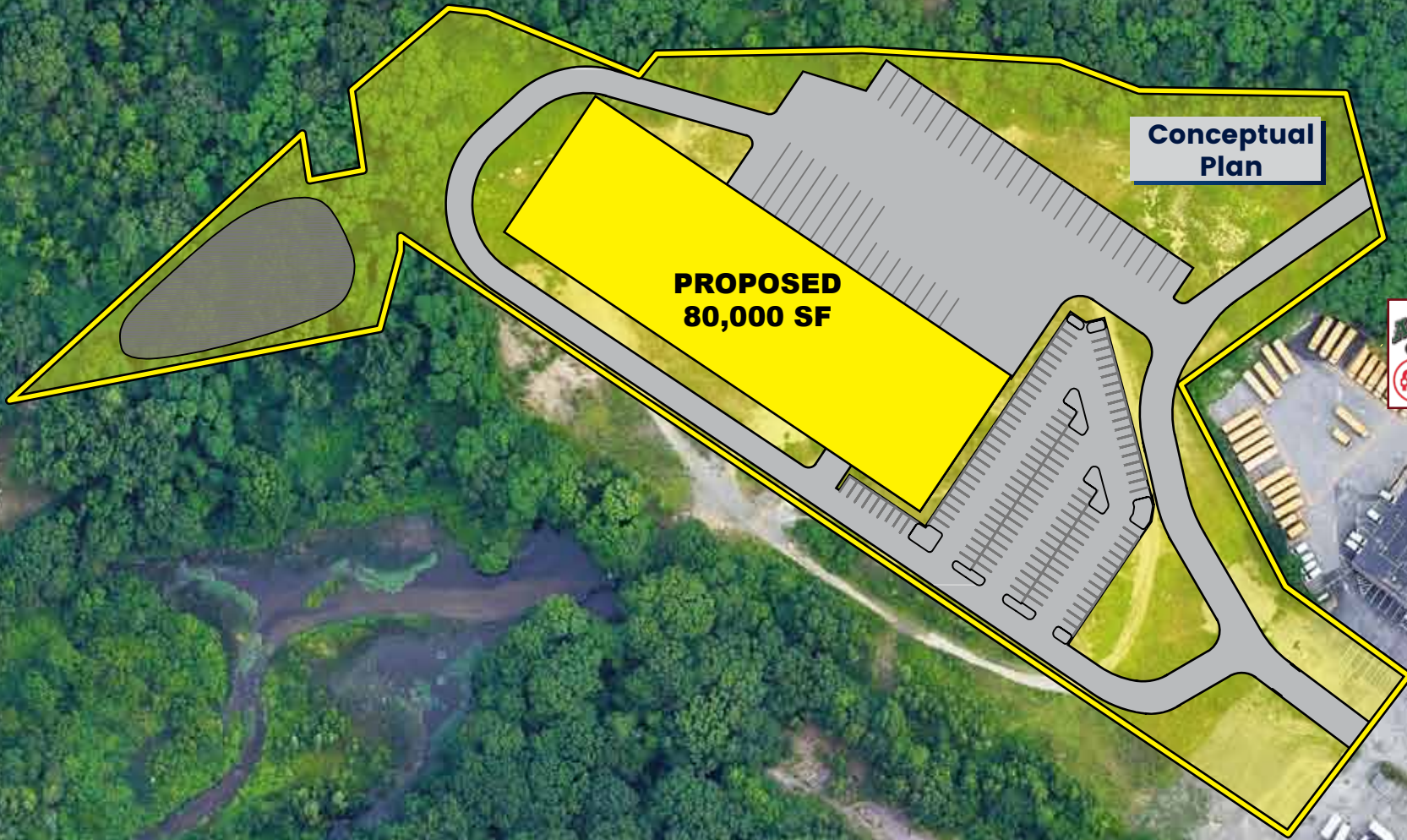
VEAZIE ST.

BRANCH AVE.

7

DOUGLAS AVE.





ExtraSpace Storage

ALL MY SONS
MOVING & STORAGE
AUTOPART
INTERNATIONAL
PREMIUM PARTS • EXPERT SERVICE

PRECISION LASER, INC.

illumi gifts.com

ELECTROLIZING
INC.

Goodwill

FAMILY DOLLAR

WOODWARD RD.

BEULAH RD.

VEAZIE ST.

HOUGHTON ST.



Mike Hotarek
mhotarek@easternretail.com
Direct: 781-849-9017

Phone 781.849.9010 • Fax 781.849.9050 • www.easternretail.com • 25 Braintree Hill Office Park, Suite 305 • Braintree, MA 02184

The information above has been obtained from sources believed reliable. While we do not doubt its accuracy, we have not verified it and make no guarantee, warranty or representation about it. It is your responsibility to independently confirm its accuracy and completeness. Any projections, opinions, assumptions or estimates used are for example only and do not represent the current or future performance of the property. The value of this transaction to you depends on tax and other factors, which should be evaluated by your tax and financial advisors. You and your advisors should conduct a careful, independent investigation of the property to determine to your satisfaction, the suitability of the property for your needs.