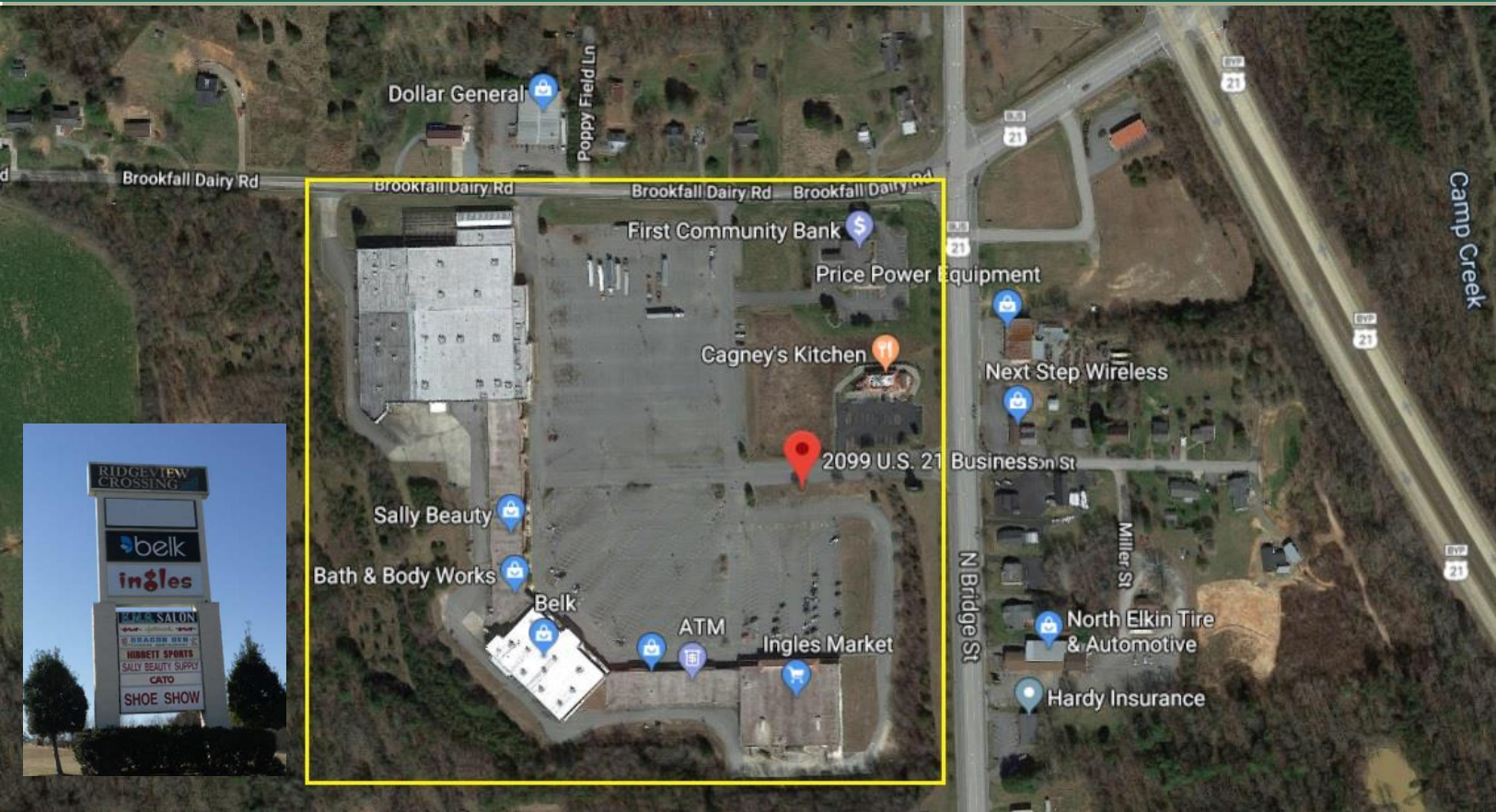


elkin, nc

2099-2195 North Bridge Street | prime retail space available in ridgeview crossing



Available 1,200 SF – 110,000 SF (many possible divisions)

GLA 194,305 square feet

Possession Immediate

Asking Rent Upon Request

Highlights

- Elkin is a centrally-located regional hub that services a tri-county with a population exceeding 70,000
- Anchor-tenants: Belk and Ingles Supermarket
- Incredible anchor opportunity with multiple divisions possible
- Co-tenants: GNC, Bath & Body Works, Shoe Sensation, Sally Beauty, Hallmark
- Neighboring tenants: Walmart Supercenter, Food Loin, Tractor Supply, Lowe's

For More Information:

Stephanie Zulic | Leasing Director | Licensed Real Estate Salesperson | stephanie@malachitegroup.com | T 516 877 1677

malachitegroup.com

Site Plan



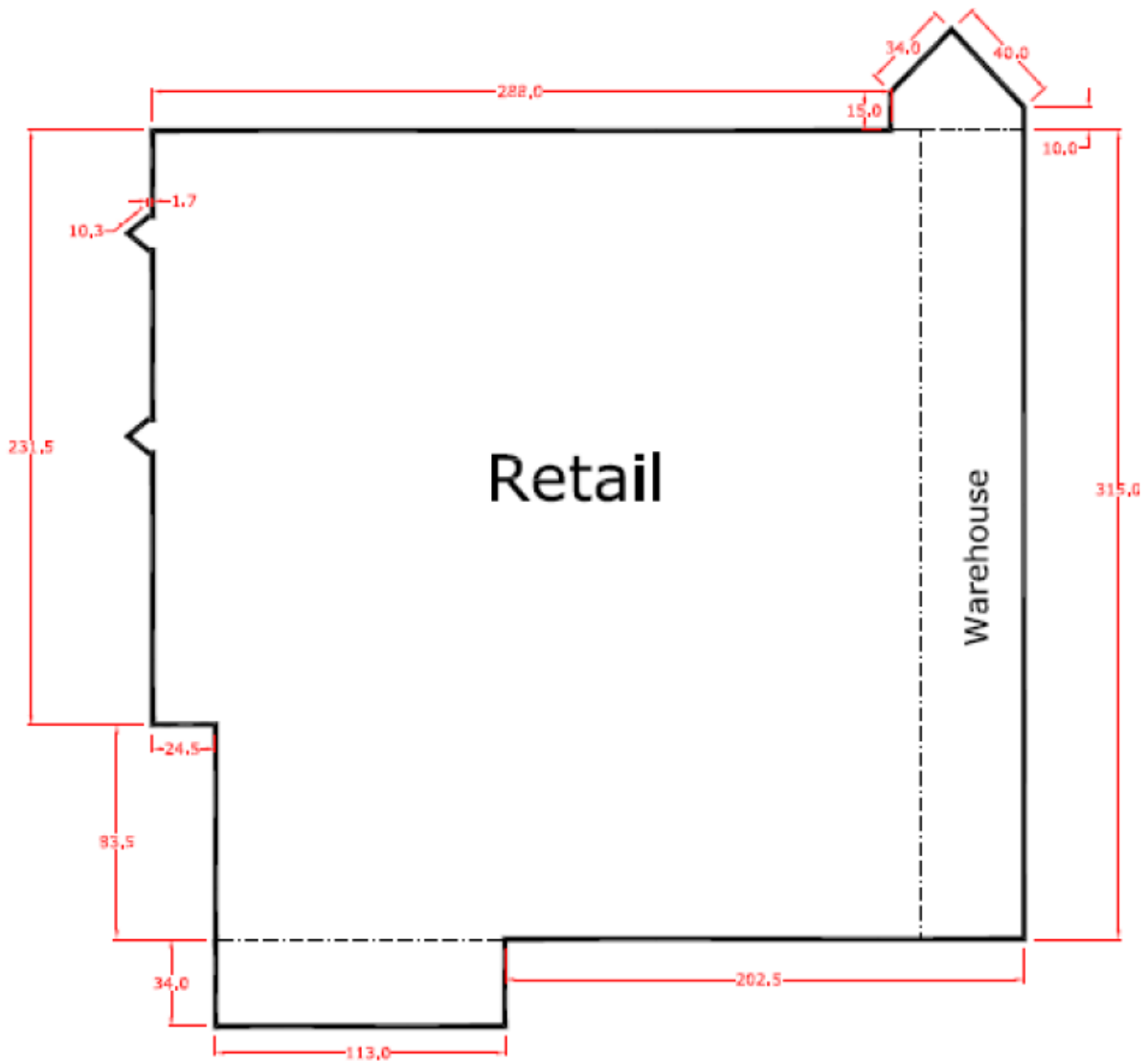
For More Information:

Stephanie Zulic | Leasing Director | Licensed Real Estate Salesperson | stephanie@malachitegroup.com | T 516 877 1677

malachitegroup.com

Floorplans

Former Walmart – Anchor Opportunity



For More Information:

Stephanie Zulic | Leasing Director | Licensed Real Estate Salesperson | stephanie@malachitegroup.com | T 516 877 1677

malachitegroup.com

Aerial



For More Information:

Stephanie Zulic | Leasing Director | Licensed Real Estate Salesperson | stephanie@malachitegroup.com | T 516 877 1677

malachitegroup.com