

# Former Bank for Sale

2,630 SF with Drive-Thru  
510 Main Street, Chester, NJ



# Property Overview & Demographics

## 510 Main Street, Chester, NJ

Introducing an exclusive opportunity in Chester, NJ - a sought-after location that seamlessly combines history and modernity. This former bank branch is situated in the picturesque landscapes of Morris County, offering a strong local economy, affluent demographics, and a growing population. With its strategic proximity to major business centers and appeal as a tourist destination, this bank branch presents an exciting investment prospect to establish a prominent financial presence in Chester's vibrant community.

### Location

2,630 SF building with a three-lane drive-thru

0.62 acres

15 car parking spaces

Washington Turnpike: 12,590 VPD

### Financials

Asking price: Upon request

Taxes: \$29,652.49 (2024)

### Additional Information

Located in a B-2 zone

[Click to view zoning information](#)

[Click to view Matterport](#)



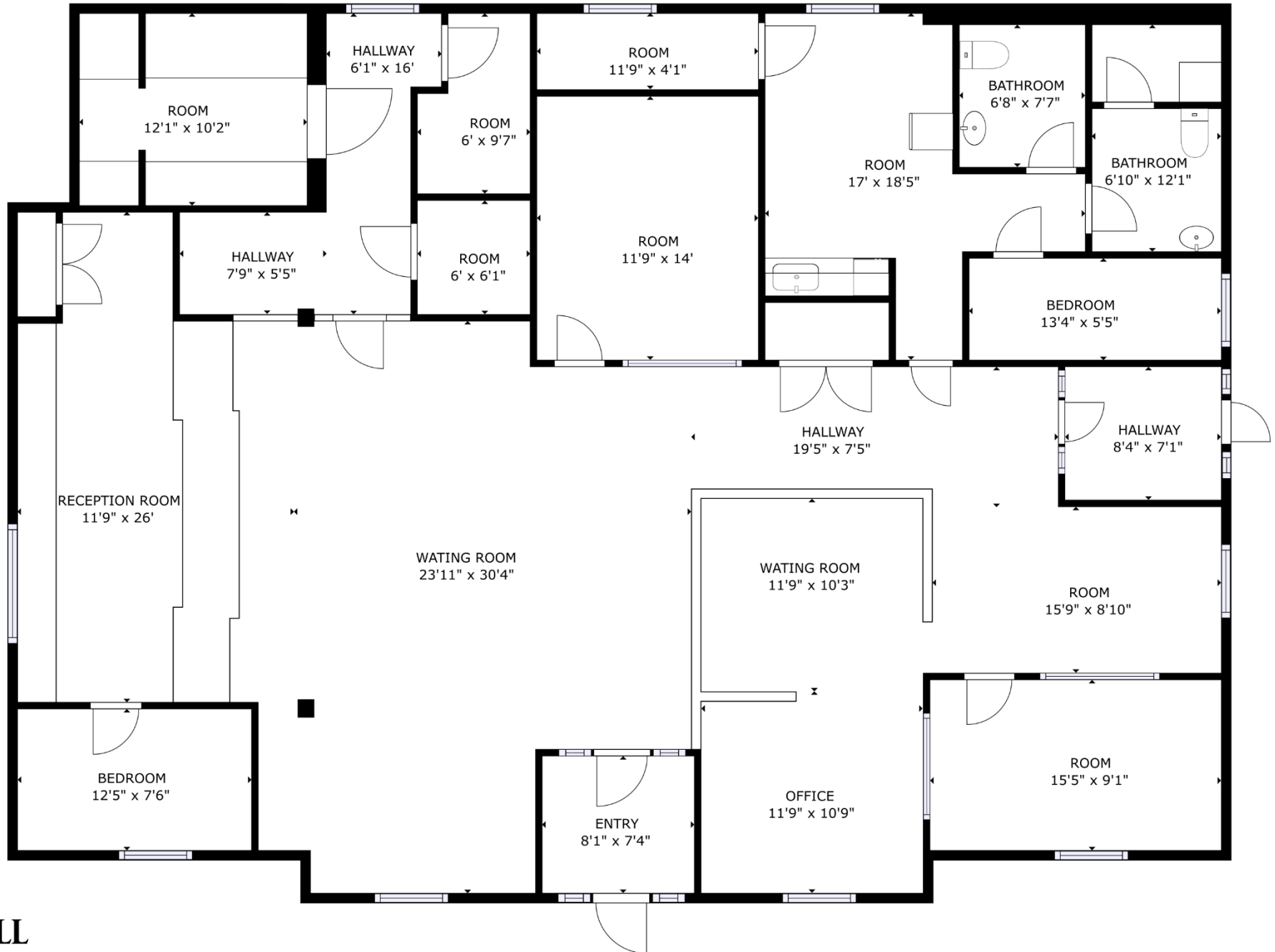
	3 miles	5 miles	10 miles
<b>Population</b>	11,361	42,374	241,973
<b>Med. HH income</b>	\$159,728	\$150,341	\$117,348
<b>Employees</b>	5,400	14,078	103,922
<b>Businesses</b>	837	1,978	11,130

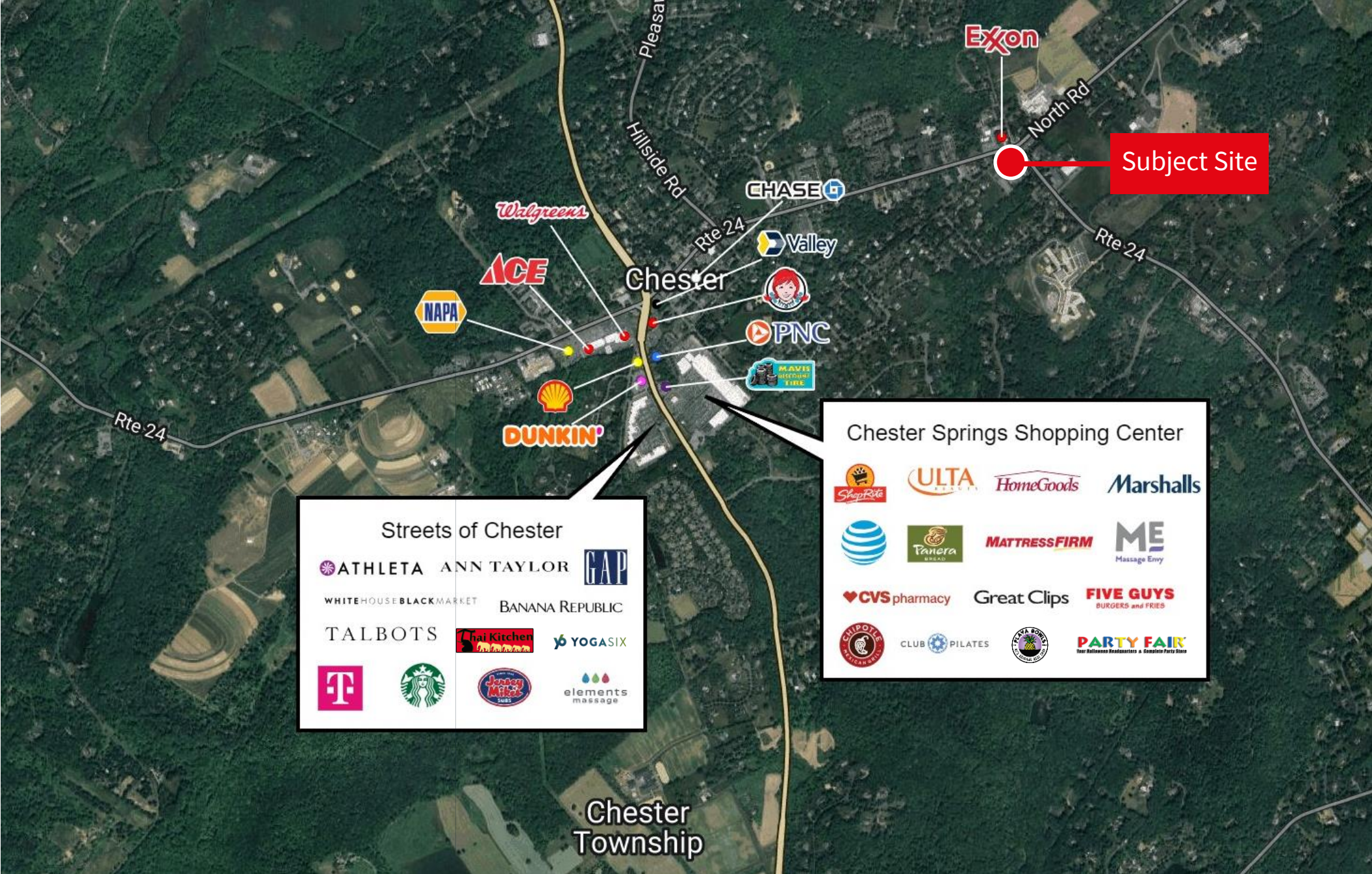
Source: ESRI, 2023

# Additional images



# Floor plan





**Subject Site**

**Streets of Chester**


**Chester Springs Shopping Center**


**Chester Township**

**Craig Parcels**  
 Senior Vice President  
 craig.parcels@jll.com  
 M: +1 201 618 7223

**John Leubecker**  
 Executive Vice President  
 john.leubecker@jll.com  
 M: +1 301 651 3763

