

# AVAILABLE

YOUR  
SIGN HERE

## FOR LEASE

922 State Avenue  
Marysville, Washington



## MARYSVILLE CENTER

Dale Goong | Chandler Williams | Steve Erickson

First Western Properties, Inc. | 425.822.5522 | fwp-inc.com  
11621 97th Lane NE, Kirkland, Washington 98034

## 922 STATE AVENUE:

- End Cap: 2,400 SF Available, \$24.00 PSF + \$4.40 PSF NNN
- Neighboring Tenants Include Senior Doc & Hotrod Barbershop
- Pylon Signage Panel Available
- High Visibility Strip Retail Building & Freestanding Office Building
- Easy Access On/Off Busy State Avenue



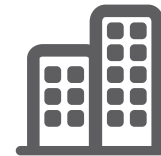
## SIGNAGE



Population



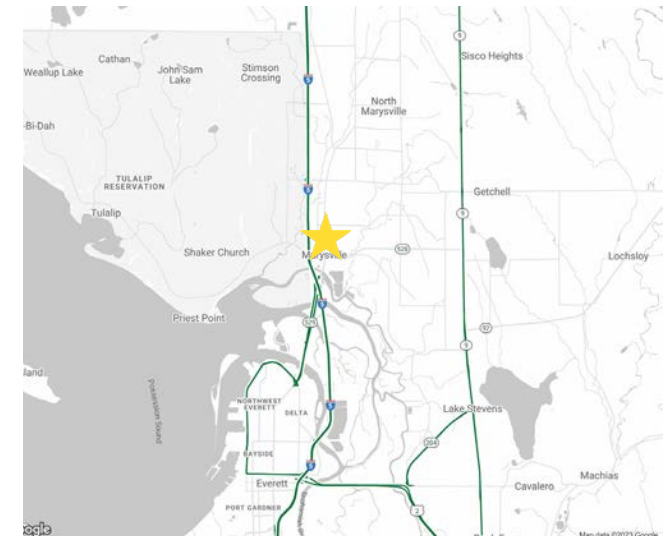
Median HH Income



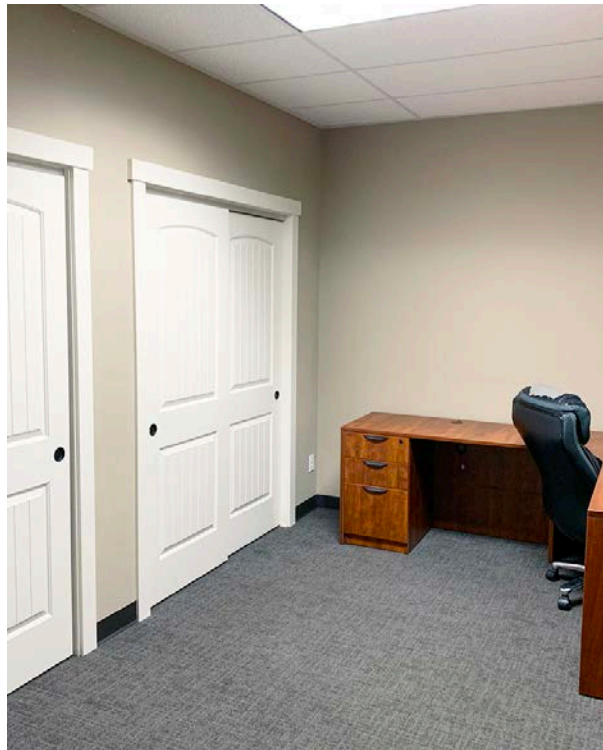
Daytime Population

Regis - 2024

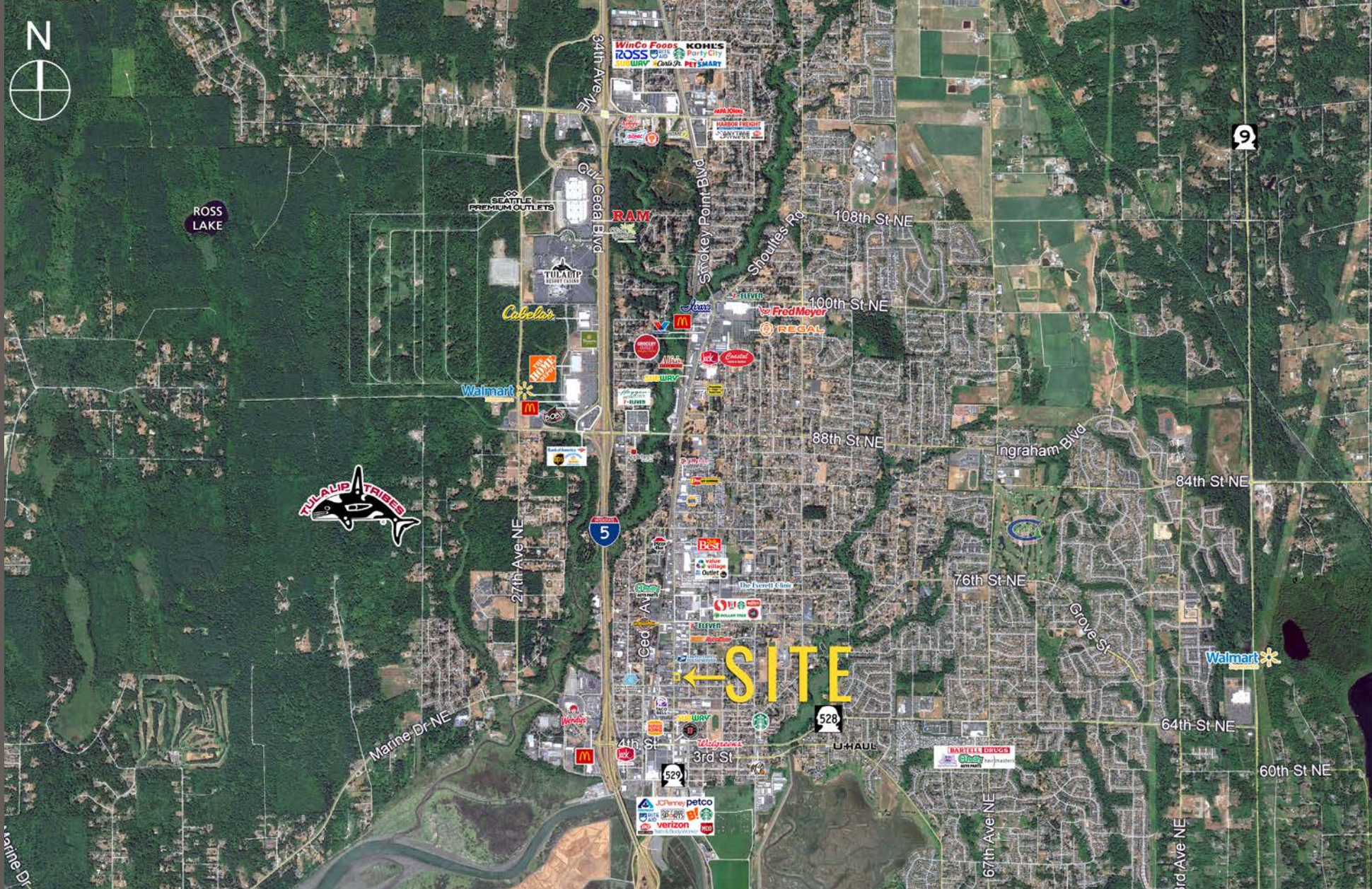
	Population	Median HH Income	Daytime Population
Mile 1	10,691	\$73,237	4,833
Mile 3	55,715	\$124,062	12,267
Mile 5	106,949	\$129,832	24,846











Boeing Expanding 1M SF  
in Snohomish County



Located Minutes  
from Interstate 5



15,411 ADT  
State Avenue



39,495 Households  
5 Mile Radius



KIRKLAND | TACOMA | PORTLAND | SEATTLE

RELATIONSHIP FOCUSED. RESULTS DRIVEN.

**DALE GOONG**

425.250.3275  
dale@fwp-inc.com

**CHANDLER WILLIAMS**

206.518.1170  
chandler@fwp-inc.com

**STEVE ERICKSON**

425.822.5522  
serickson@fwp-inc.com



First Western Properties, Inc. | 425.822.5522  
11621 97th Lane NE Kirkland, WA 98034 | fwp-inc.com

© First Western Properties, Inc. DISCLAIMER: The above information has been secured from sources believed to be reliable, however, no representations are made to its accuracy. Prospective tenants or buyers should consult their professional advisors and conduct their own independent investigation. Properties are subject to change in price and/or availability without notice.