

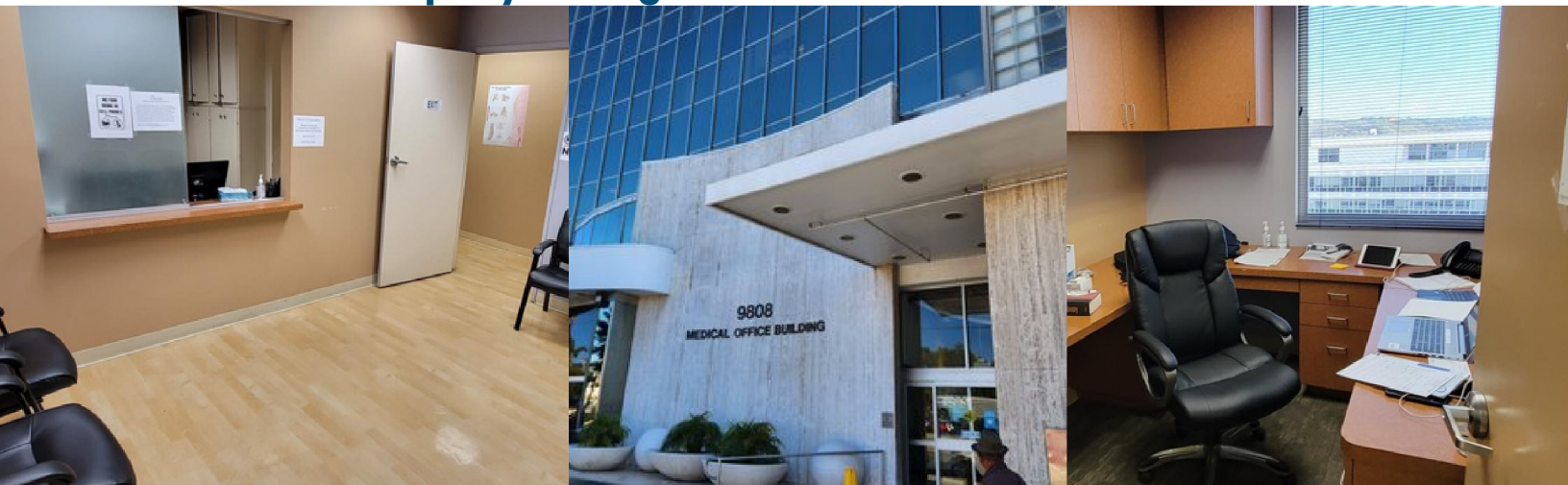
# MEDICAL OFFICE FOR SUBLEASE

SOUTHERN CALIFORNIA HOSPITAL

**9808 Venice Blvd #706 Culver City, CA**



- **800 SF Available in a Medical Building at the Heart of Culver City Adjacent to Southern California Hospital**
- **Direct Access from I-405 and via Public Transportation**
- **Excellent Synergy with Other Medical Practices**
- **Ample Patient and Staff Parking**
- **Renovated Offices & Common Areas**
- **Shopping Malls, Restaurants in a close proximity**
- **Efficient Onsite Property Management**

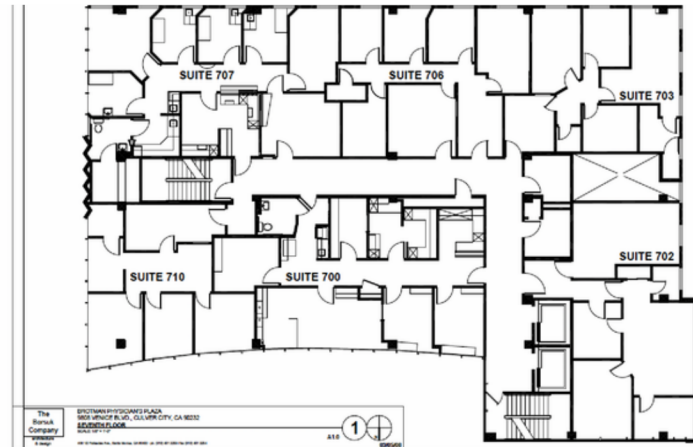


# PER DIEM OPPORTUNITY



## DAILY RATE \$150/EXAM ROOM

- ✓ 2 Exam Rooms
- ✓ Reception and Waiting Area
- ✓ Modern Renovated Office Space
- ✓ Doctor's Office
- ✓ Available: M - T - Th - F



**Steve Body**, Ph.D, MBA, MSF, MA

[www.MDRECapital.com](http://www.MDRECapital.com)

**818-852-9255**

[Steve@mdrecapital.com](mailto:Steve@mdrecapital.com)

CA BRE #01927373  
KW Commercial CA BRE #01428774

**Pelin Sen**, MBA

[www.passmedmanagement.com](http://www.passmedmanagement.com)

**310-382-7539**

[Pelin@passmedmgmt.com](mailto:Pelin@passmedmgmt.com)

CA BRE #02210768