

# MEETINGHOUSE BUSINESS CENTER

Plymouth Meeting, PA



## CAMPUS HIGHLIGHTS

- Nestled within a picturesque park setting
- Abundant natural light in interior spaces
- First-class property management services provided by the dedicated team at Brandywine Realty Trust
- High-speed voice and data delivery systems with fiber optic connectivity
- 4/1,000 SF parking
- Online tenant resource system
- Dedicated to sustainability through Brandywine's company-wide program, Brandywine Environments
- On-site maintenance professionals with day porter services

Class A Office Campus  
Four Buildings Totaling

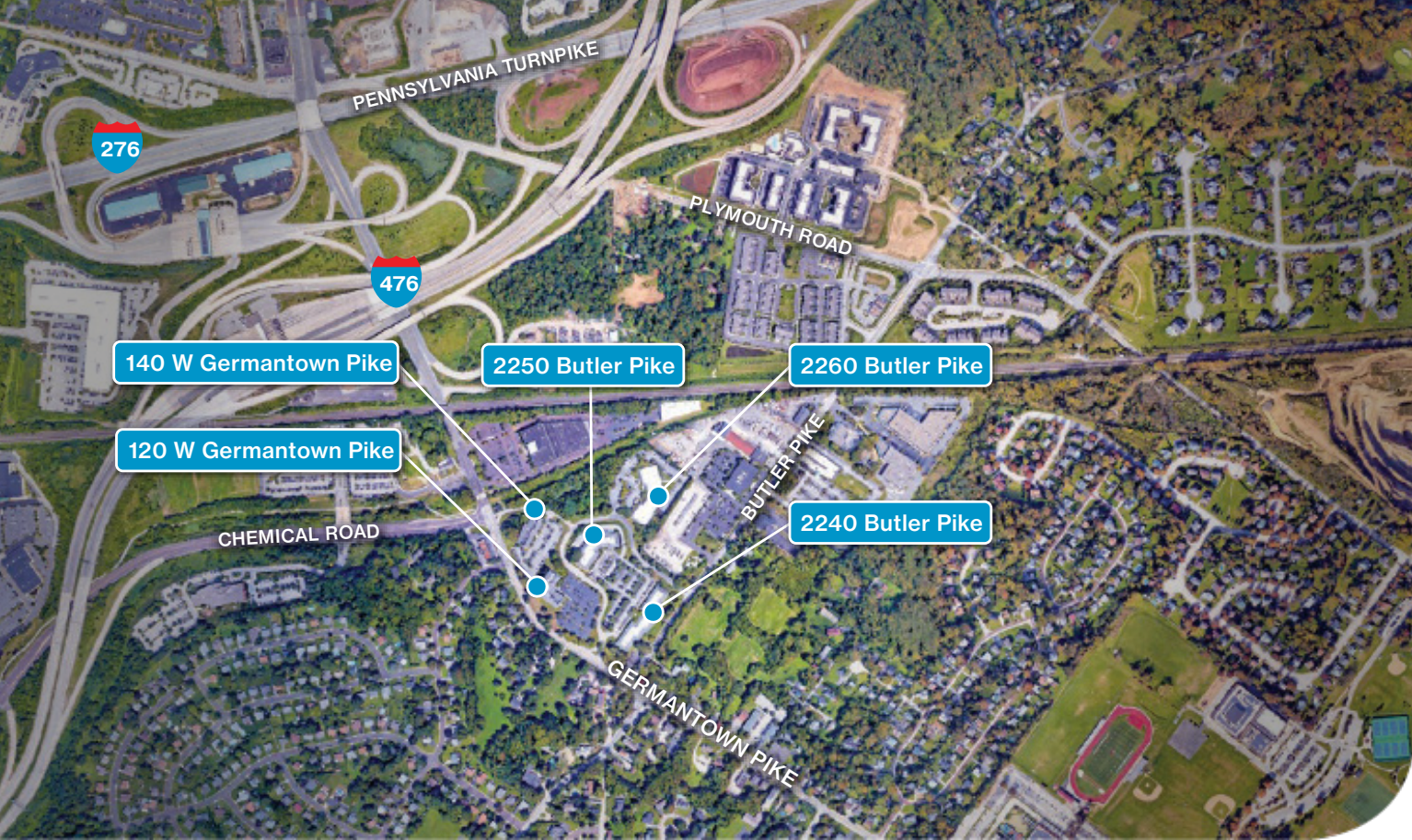
**140,052 SF**

for more information:

KEITH OLDT  
215.619.4765  
[Keith.Oldt@bdnreit.com](mailto:Keith.Oldt@bdnreit.com)

SHANE MORRELL  
215.871.9632  
[Shane.Morrell@bdnreit.com](mailto:Shane.Morrell@bdnreit.com)





## LOCATION & COMMUNITY

- Strategically positioned at the intersection of the Blue Route (I-476) and the Pennsylvania Turnpike (I-276), with a direct connection to the Schuylkill Expressway (I-76)
- On-site SEPTA bus station, which provides service to other regional transportation centers
- Home to distinguished education institutions, providing tenants a pipeline of high-quality workforce talent
- Nearby Plymouth Meeting Mall, featuring numerous restaurants and the Philadelphia region's largest Whole Foods, and various hotels, including Marriott's Spring Hill Suites, Courtyard by Marriott, and DoubleTree Suites by Hilton

Brandywine Realty Trust is one of the largest, publicly-traded, full-service, integrated real estate companies in the United States with a core focus in the Philadelphia, PA, Washington, D.C., and Austin, TX markets. Organized as a real estate investment trust (REIT), we own, develop, lease and manage an urban, town center and transit-oriented portfolio.



555 East Lancaster Avenue  
Suite 110, Radnor, PA 19087

[www.brandywinerealty.com](http://www.brandywinerealty.com)



for more information:

KEITH OLDT  
215.619.4765  
[Keith.Oldt@bdnreit.com](mailto:Keith.Oldt@bdnreit.com)

SHANE MORRELL  
215.871.9632  
[Shane.Morrell@bdnreit.com](mailto:Shane.Morrell@bdnreit.com)

