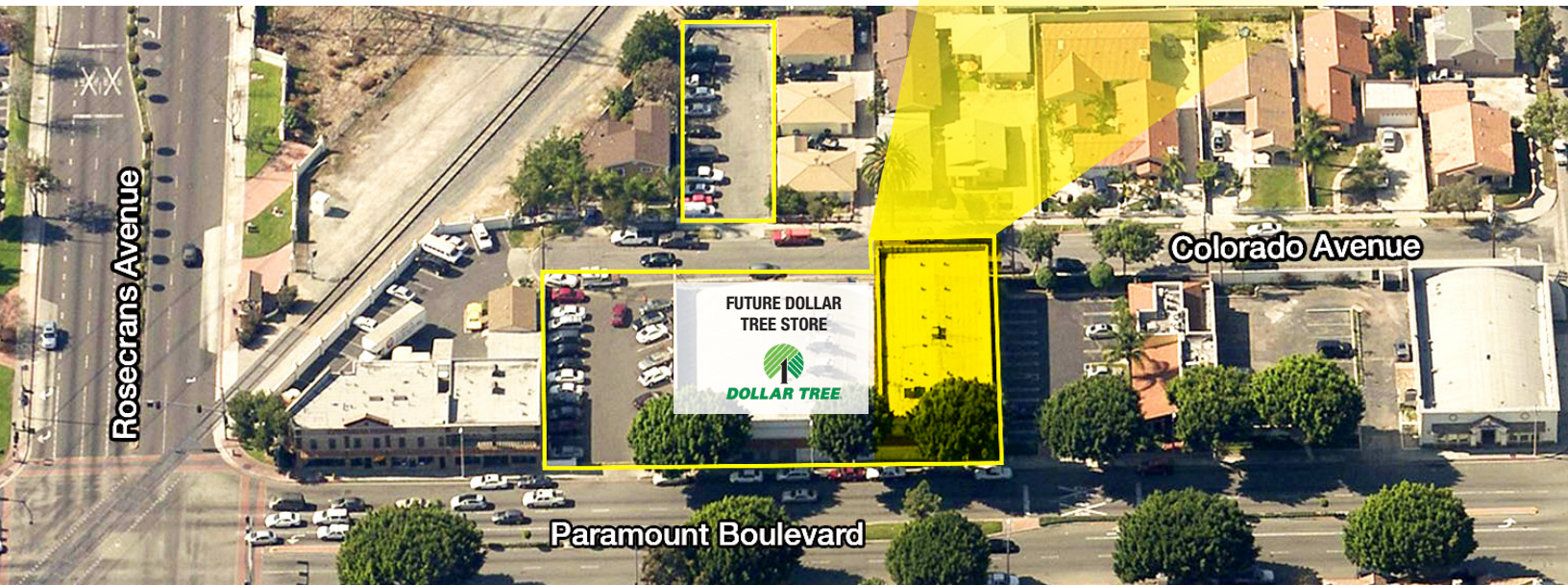
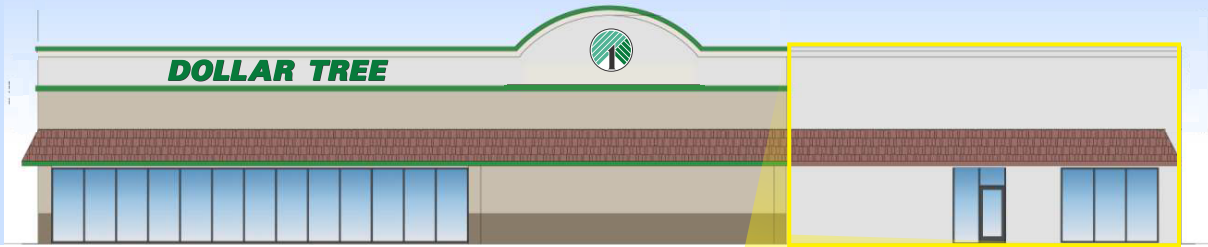


**FOR LEASE**  
**5,935 SF**  
**Adjacent New Dollar Tree Store**  
**Paramount, CA**



**14139 Paramount Blvd.**  
@ Rosecrans, Paramount, CA

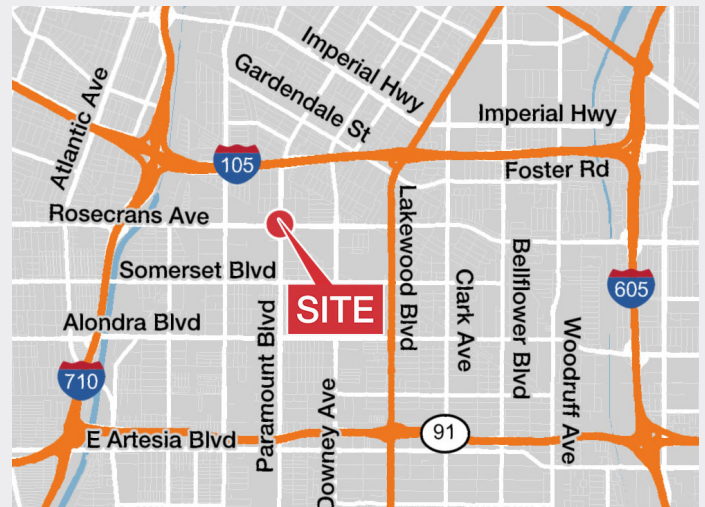
**Property Highlights:**

- Approximately 5,935 square feet
- Adjacent New Dollar Tree Store (Est. Opening First Quarter 2020)
- Contact Broker regarding economics

DEMOGRAPHICS	1 MILES	2 MILES	3 MILES	5 MILES
TOTAL POPULATION	37,112	135,522	329,584	885,560
AVG. HH INCOME	\$59,077	\$63,478	\$63,204	\$66,199
NO. OF EMPLOYEES	12,724	48,435	91,101	234,085

**Traffic Count (approximate)**

PARAMOUNT STREET	24,000 ADT
ROSECRANS AVENUE	27,000 ADT
TOTAL	51,000 ADT



**FOR MORE INFORMATION:**

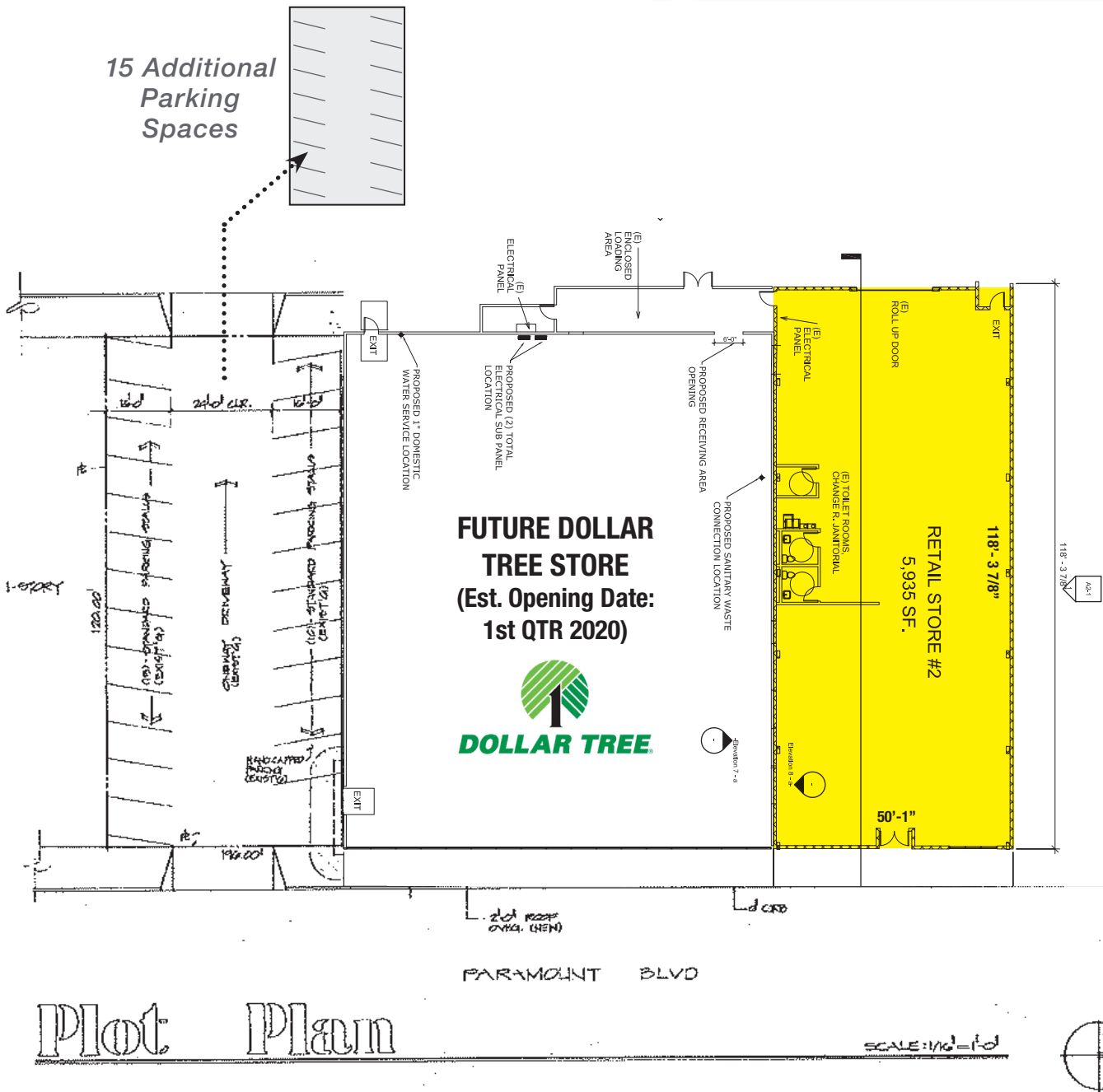
**Steven H. Weiss**  
Executive Vice President  
**818 905 2400 Ext. 1634**  
sweiss@naicapital.com  
CA DRE License #0068554

15821 Ventura Blvd.  
Suite 320  
Encino, CA 91436  
818 905 2400  
[naicapital.com](http://naicapital.com)

FOR LEASE

5,935 SF

Adjacent New Dollar Tree Store  
Paramount, CA



FOR MORE INFORMATION:

**Steven H. Weiss**  
Executive Vice President  
818 905 2400 Ext. 1634  
sweiss@naicapital.com  
CA DRE License #0068554

15821 Ventura Blvd.  
Suite 320  
Encino, CA 91436  
818 905 2400  
[naicapital.com](http://naicapital.com)