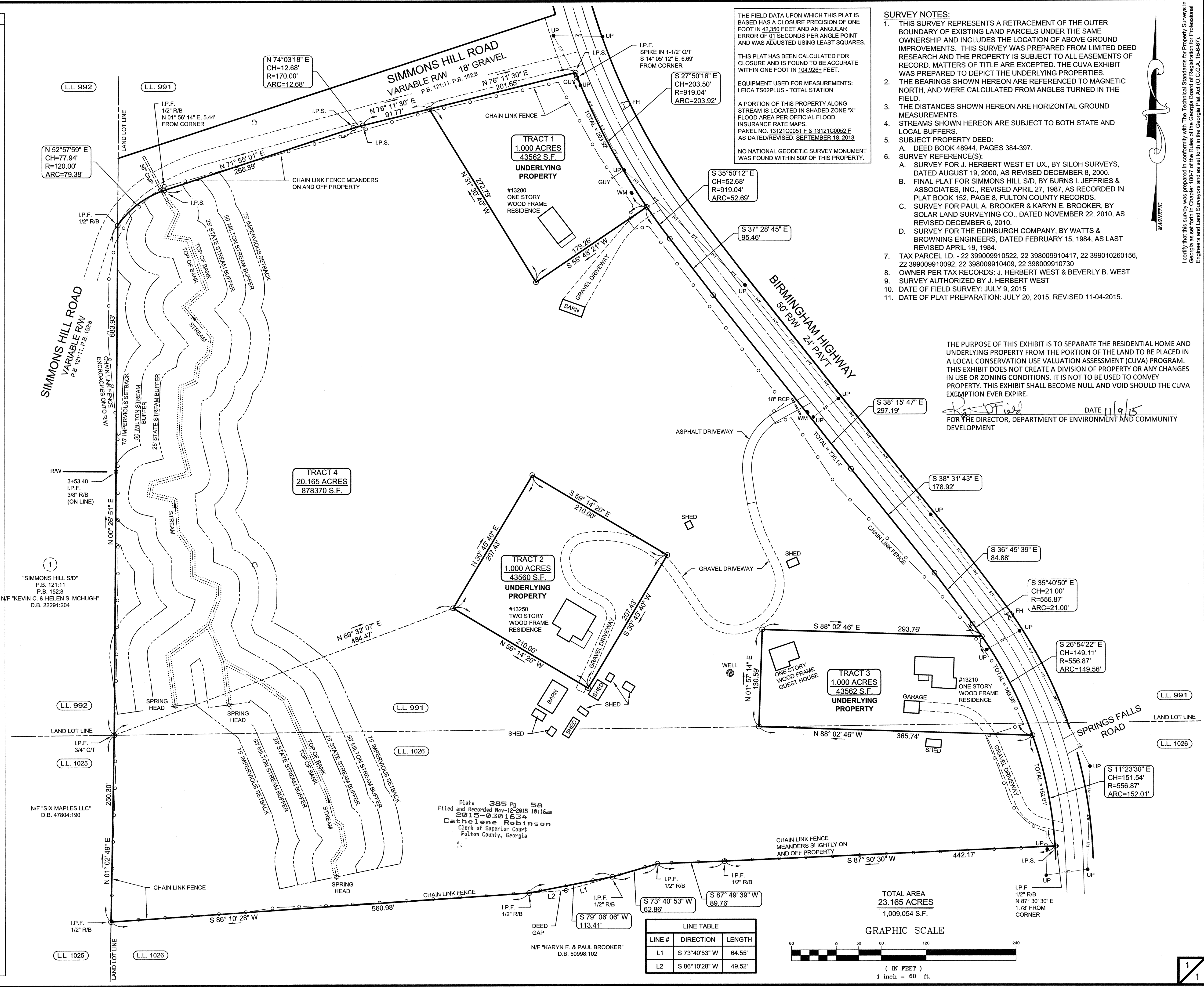
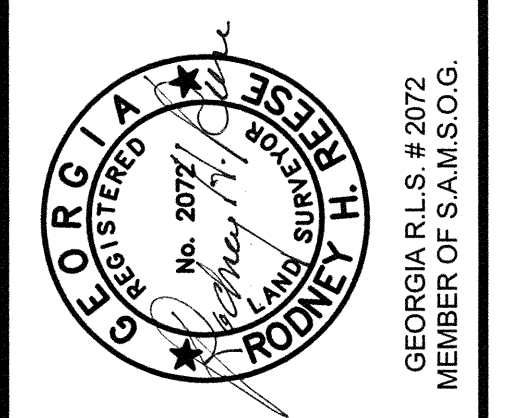


- LEGEND: ABBREVIATIONS AND SYMBOLS**
- A.C.M.P. - ALUMINIZED C.M.P.
 - A.K.A. - ALSO KNOWN AS
 - ARC - LENGTH OF CURVE
 - B.C. - BACK OF CURB
 - B.C.C.M.P. - BITUMINOUS COATED C.M.P.
 - B.F.E. - BASEMENT FLOOR ELEVATION
 - B.L. - BUILDING LINE
 - B.L.W. - BUILDING LINE WIDTH
 - BFE - BASE FLOOD ELEVATION
 - BM - BENCHMARK
 - B.V.C. - BEGIN VERTICAL CURVE
 - BW - BOTTOM OF WALL (GROUND)
 - C&G - CURB AND GUTTER
 - C.# - CURVE NUMBER (SEE CURVE TABLE)
 - CL - CENTERLINE
 - CB - CATCH BASIN
 - C.B.L. - CORNER BUILDING LINE
 - CH - CHORD OF CURVE
 - C.M.F. - CONCRETE MONUMENT FOUND
 - C.M.P. - CORRUGATED METAL PIPE
 - CO - CLEAN OUT
 - C.P.P. - CORRUGATED PLASTIC PIPE
 - CRZ - CRITICAL ROOT ZONE
 - CT - CRIMP TOP PIPE
 - D.A. - DRAINAGE AREA
 - D.B. - DEED BOOK
 - D.E. - DRAINAGE EASEMENT
 - DI - DROP INLET (STORM)
 - D.I.P. - DUCTILE IRON PIPE
 - DWCB - DOUBLE WING CATCH BASIN
 - EP - EDGE OF PAVEMENT
 - E.V.C. - END VERTICAL CURVE
 - F.C. - FACE OF CURB
 - FES - FLARED END SECTION (STORM)
 - F.F.E. - FIRST FLOOR ELEVATION
 - FH - FIRE HYDRANT
 - F.I.R.M. - FLOOD INSURANCE RATE MAP
 - F.I.S. - FLOOD INSURANCE STUDY
 - HW - HEADWALL
 - GC - GRANITE CURB
 - GI - GRATE INLET (STORM)
 - GM - GAS METER
 - GV - GAS VALVE
 - H.D.P.E. - HIGH DENSITY POLYETHYLENE PIPE
 - H.P. - HIGH POINT
 - I.E. - INVERT ELEVATION
 - I.P.F. - IRON PIN FOUND
 - I.P.S. - IRON PIN SET (1/2" R/B)
 - I.R.F. - INTERMEDIATE REGIONAL FLOOD (100-YR)
 - JB - JUNCTION BOX (STORM)
 - L - LENGTH OF CURVE
 - L.# - LINE NUMBER (SEE LINE TABLE)
 - L.F.A. - LOWEST FLOOR ELEVATION
 - L.L. - LAND LOT LINE
 - LP - LIGHT POLE
 - L.P. - LOW POINT
 - M.F.E. - MINIMUM FLOOR ELEVATION
 - MH - MANHOLE (SANITARY)
 - M.N.F. - MAG NAIL FOUND
 - M.N.S. - MAG NAIL SET
 - M.S.L. - MEAN SEA LEVEL
 - N/F - NOW OR FORMERLY
 - N.A.D. - NORTH AMERICAN DATUM
 - NGVD - NATIONAL GEODETIC VERTICAL DATUM
 - O.T. - OPEN TOP PIPE
 - O.C.S. - OUTLET CONTROL STRUCTURE (STORM)
 - PAVT - PAVEMENT
 - PB - POWER BOX
 - P.B. - PLAT BOOK
 - P.C. - POINT OF CURVATURE
 - P.I. - POINT OF INTERSECTION
 - P.O.B. - POINT OF BEGINNING
 - P.O.C. - POINT OF COMMENCEMENT
 - P.T. - POINT OF TANGENCY
 - P.V.C. - POLYVINYL CHLORIDE PIPE
 - P.V.I. - POINT OF VERTICAL INTERSECTION
 - P.L. - PROPERTY LINE
 - R - RADIUS OF CURVE
 - RM - REFERENCE MARK (F.I.R.M.)
 - R.F. - ROCK FOUND
 - R.B.L. - REAR BUILDING LINE
 - R.C.P. - REINFORCED CONCRETE PIPE
 - R/B - REINFORCING BAR
 - RW - RETAINING WALL
 - R.W. - RIGHT OF WAY
 - S.B.L. - SIDE BUILDING LINE
 - SD - STORM DRAIN
 - S.F. - SQUARE FEET
 - SS - SANITARY SEWER
 - S.S.E. - SANITARY SEWER EASEMENT
 - SSE - SAFETY SLOPE END SECTION (STORM)
 - SWCB - SINGLE WING CATCH BASIN
 - T - TANGENT OF CURVE
 - T.B.M. - TEMPORARY BENCH MARK
 - T.C.E. - TEMPORARY CONSTRUCTION EASEMENT
 - TB - TELECOMMUNICATIONS BOX
 - TP - TELECOMMUNICATIONS POLE
 - TC - TOP OF CURB
 - TMH - TELECOMMUNICATIONS MANHOLE
 - TW - TOP OF WALL
 - UP - UTILITY POLE
 - V.C.P. - VITRIFIED CLAY PIPE
 - W - WATER METER
 - WV - WATER VALVE
 - YI - YARD INLET (PEDESTAL TYPE)
 - Δ - DELTA OF CURVE
 - - STREAM
 - - EXISTING STORM WATER FLOW
 - - - - FLOOD LIMITS
 - - - - GAS LINE
 - - - - POWER LINE
 - - - - PROPOSED STORM WATER FLOW
 - - - - SILT FENCE
 - - - - TREE FENCE
 - - - - TELECOMMUNICATIONS LINE
 - - - - WATER LINE
 - - - - WIRE FARM FENCE LINE
 - - - - WOOD FENCE LINE
 - - - - CHAIN LINK FENCE LINE



I certify that this survey was prepared in conformity with the Technical Standards for Property Surveys in Georgia as set forth in Chapter 180-7 of the Rules of the Georgia Board of Registration for Professional Engineers and Land Surveyors and as set forth in the Georgia Plat Act (O.C.G.A. 15-6-87).

BRUMBELOW-REESE AND ASSOC., INC.
LAND SURVEYING SERVICES, LAND PLANNERS,
DEVELOPMENT CONSULTANTS
(GEORGIA LICENSE LSF002695)
13685 HIGHWAY 9 N
MILTON, GEORGIA 30004-3616
PHONE: 770-475-6817
FAX: 770-569-4946
EMAIL: BRASSING@COMCAST.NET



REVISIONS:
11-04-2015, MISC. CORRECTIONS

LOCATED IN:
LAND LOT(S): 991, 1026
DISTRICT: 2, SECTION: 2
CITY OF: MILTON
COUNTY OF: FULTON
STATE OF: GEORGIA

CONSERVATION EASEMENT EXHIBIT FOR
DR. J. HERBERT WEST & BEVERLY B. WEST

FIELD BY: SDR, WGH
DRAWN BY: WGH, MK
CHECKED BY: RHR
DRAWING: WEST-1
JOB #: 2015-045

DATE: JULY 9, 2015