

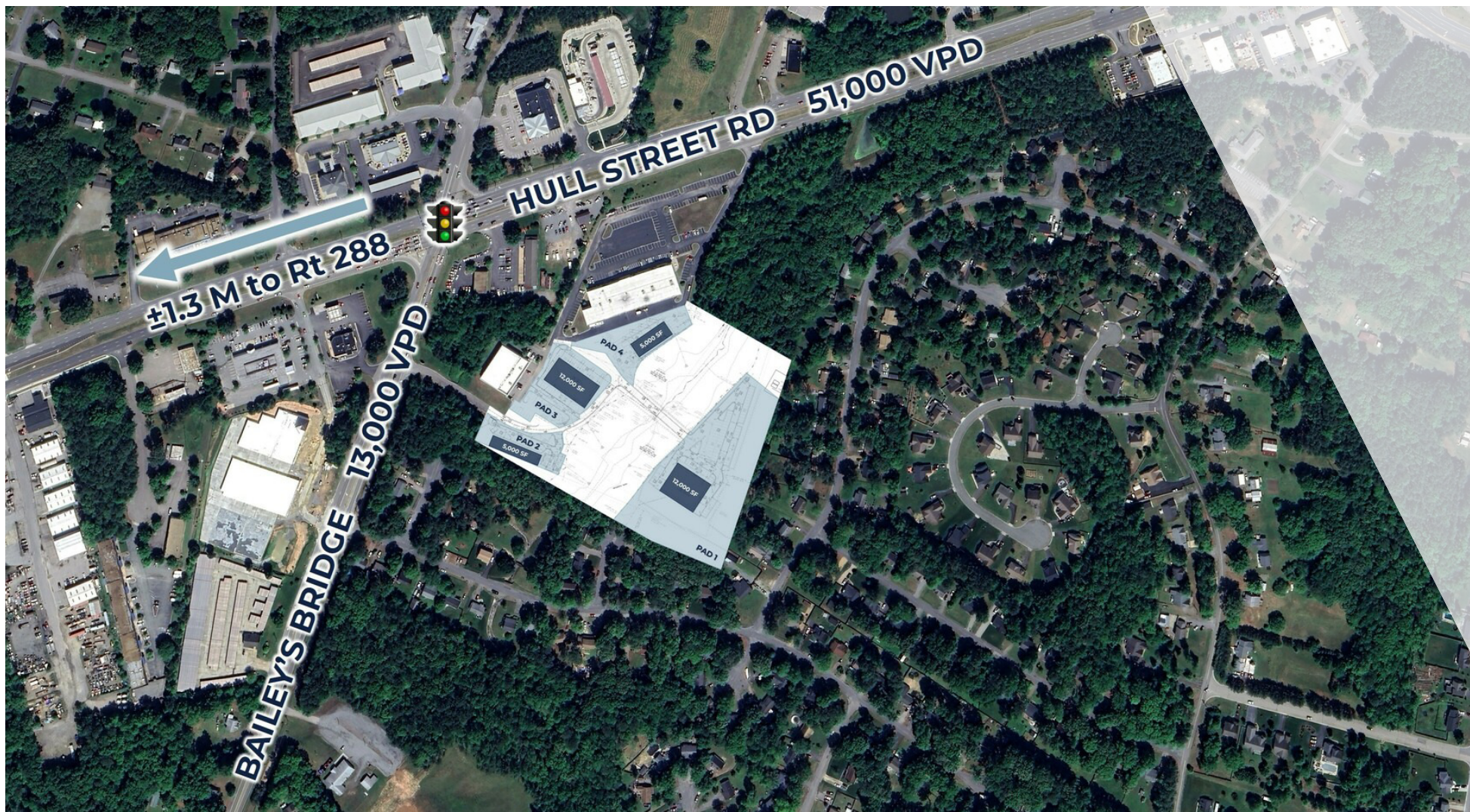
FOR SALE

13.87 AC LAND/PAD SITES

11519 - 11551 Hull Street Rd | Midlothian, VA 23112



S.L. NUSBAUM
REALTY CO.



ANDREW BRODIE

Senior Associate

O. 804.944.9254

C. 804.759.5970

abrodie@slnusbaum.com

EMMA WILL

Associate

O. 804.508.7283

C. 804.821.9042

ewill@slnusbaum.com

TRIB SUTTON

Senior Director

O. 804.477.8785

C. 804.337.6525

tsutton@slnusbaum.com

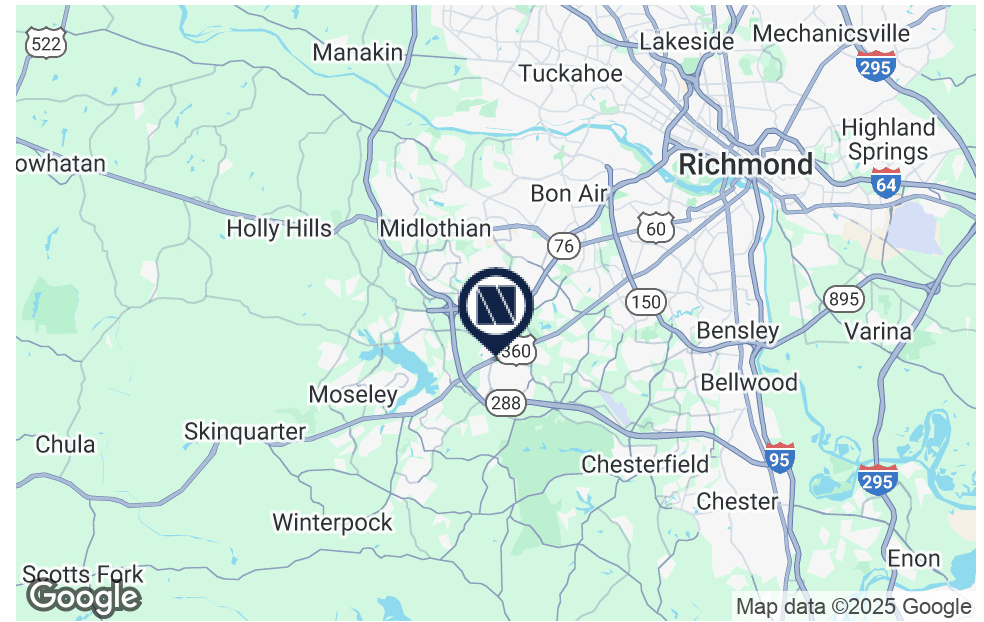
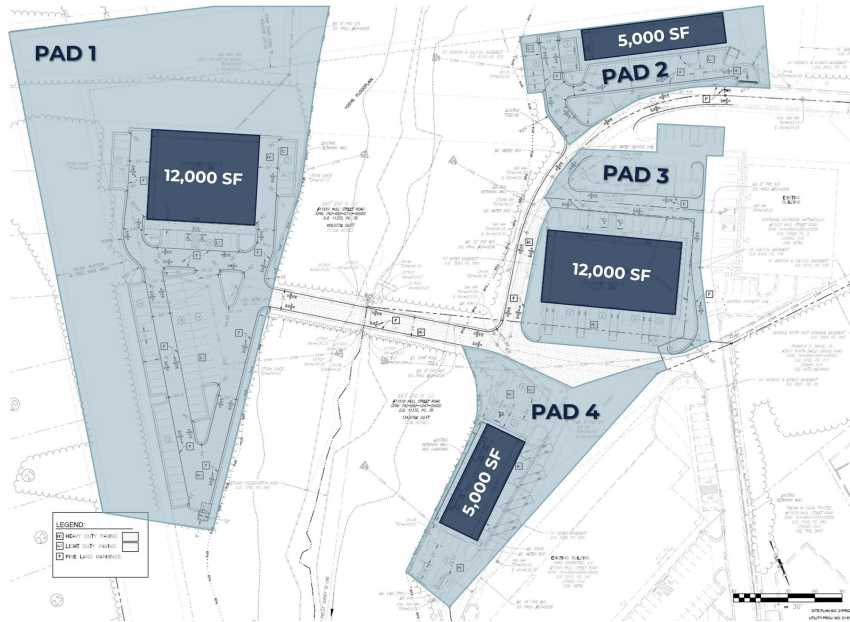
PROPERTY SUMMARY

13.87 AC LAND/PAD SITES

11519 - 11551 Hull Street Rd | Midlothian, VA 23112



S.L. NUSBAUM
REALTY CO.



OFFERING SUMMARY

Pad 1:	5,000 SF \$375,000
Pad 2:	12,000 SF \$750,000
Pad 3:	5,000 SF \$375,000
Pad 4:	12,000 SF \$750,000
Pad 1:	12,000 SF \$750,000
Pad 2:	5,000 SF \$375,000
Pad 3:	12,000 SF \$750,000
Pad 4:	5,000 SF \$375,000
Total Lot Size:	13.87 Acres
Zoning:	O-M1

PROPERTY OVERVIEW

Development Pad Sites Available

PROPERTY HIGHLIGHTS

- Convenient access at signalized intersection of Hull Street Rd & Bailey's Bridge Rd
- ±1.3 miles to Rt 288
- Heavily-traveled Hull Street Road corridor - 51,000 VPD
- Pad-ready for 5,000 - 12,000 SF
- Utilities to the site

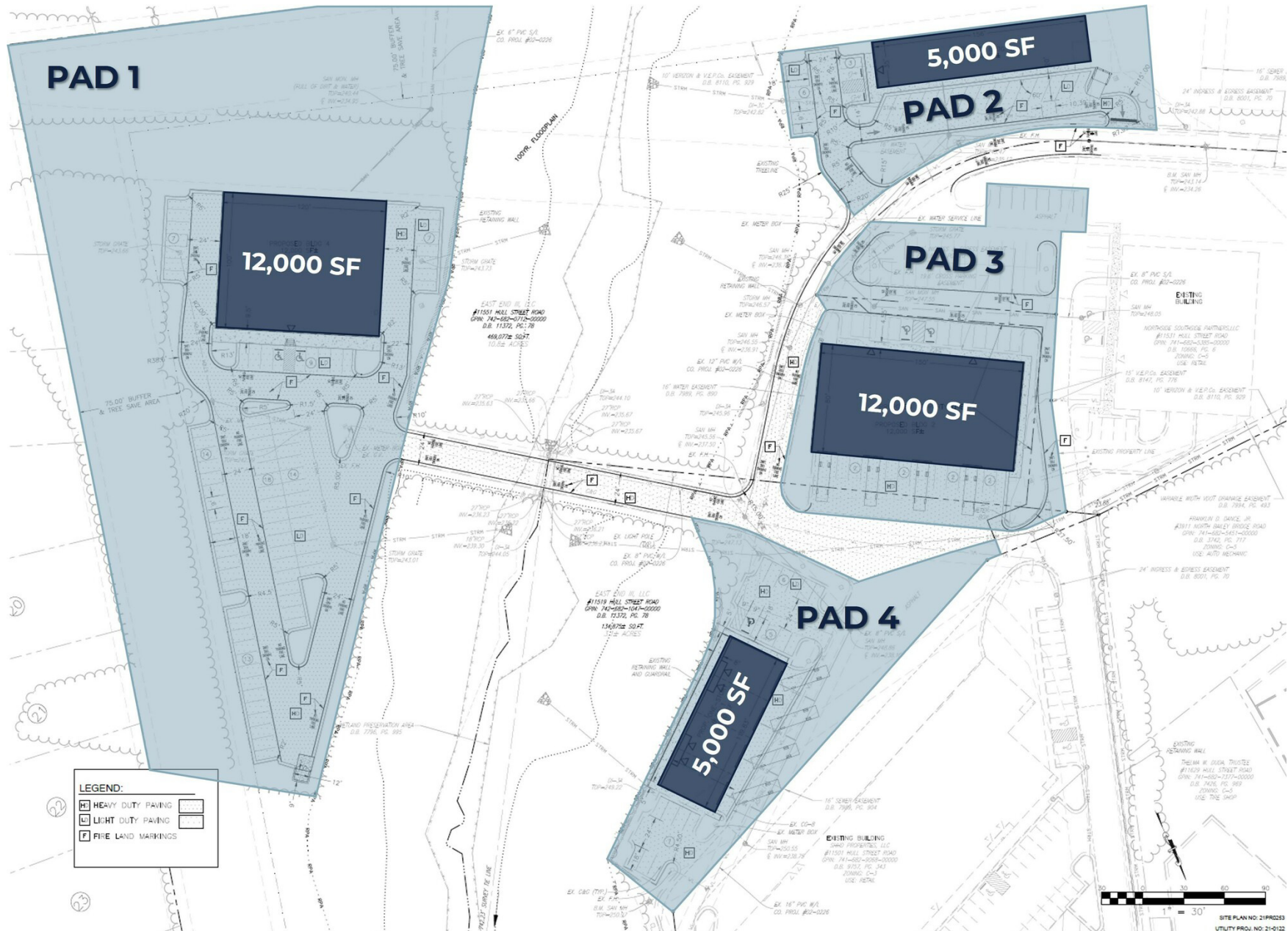
SITE PLAN

13.87 AC LAND/PAD SITES

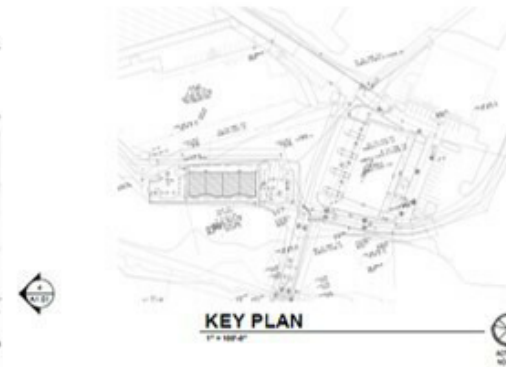
11519 - 11551 Hull Street Rd | Midlothian, VA 23112



S.L. NUSBAUM
REALTY CO.

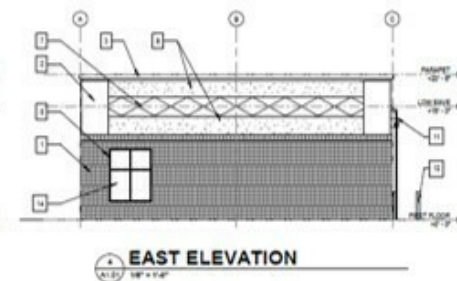


11519 - 11551 Hull Street Rd | Midlothian, VA 23112



EXTERIOR FINISH SCHEDULE			
NO.	ITEMS	NATIONAL COLLUMPIER	SPR. - MORIS
1	BRICK VENEER	YES	YES
2	GATE	YES	YES
3	CONCRETE	NO	NO
4	CONCRETE TOWER	NO	NO
5	CONCRETE WALLS	YES	YES
6	BRICK ROOFING	YES	YES
7	INTERIOR GATE	NO	NO
8	GATE	YES	YES
9	INTERIOR - INTERIOR GATE	NO	NO
10	GATE	YES	YES
11	CONCRETE	YES	YES
12	CONCRETE	YES	YES
13	CONCRETE	YES	YES
14	CONCRETE	YES	YES
15	CONCRETE	YES	YES
16	CONCRETE	YES	YES
17	CONCRETE	YES	YES
18	CONCRETE	YES	YES
19	CONCRETE	YES	YES
20	CONCRETE	YES	YES
21	CONCRETE	YES	YES
22	CONCRETE	YES	YES
23	CONCRETE	YES	YES
24	CONCRETE	YES	YES
25	CONCRETE	YES	YES
26	CONCRETE	YES	YES
27	CONCRETE	YES	YES
28	CONCRETE	YES	YES
29	CONCRETE	YES	YES
30	CONCRETE	YES	YES
31	CONCRETE	YES	YES
32	CONCRETE	YES	YES
33	CONCRETE	YES	YES
34	CONCRETE	YES	YES
35	CONCRETE	YES	YES
36	CONCRETE	YES	YES
37	CONCRETE	YES	YES
38	CONCRETE	YES	YES
39	CONCRETE	YES	YES
40	CONCRETE	YES	YES
41	CONCRETE	YES	YES
42	CONCRETE	YES	YES
43	CONCRETE	YES	YES
44	CONCRETE	YES	YES
45	CONCRETE	YES	YES
46	CONCRETE	YES	YES
47	CONCRETE	YES	YES
48	CONCRETE	YES	YES
49	CONCRETE	YES	YES
50	CONCRETE	YES	YES
51	CONCRETE	YES	YES
52	CONCRETE	YES	YES
53	CONCRETE	YES	YES
54	CONCRETE	YES	YES
55	CONCRETE	YES	YES
56	CONCRETE	YES	YES
57	CONCRETE	YES	YES
58	CONCRETE	YES	YES
59	CONCRETE	YES	YES
60	CONCRETE	YES	YES
61	CONCRETE	YES	YES
62	CONCRETE	YES	YES
63	CONCRETE	YES	YES
64	CONCRETE	YES	YES
65	CONCRETE	YES	YES
66	CONCRETE	YES	YES
67	CONCRETE	YES	YES
68	CONCRETE	YES	YES
69	CONCRETE	YES	YES
70	CONCRETE	YES	YES
71	CONCRETE	YES	YES
72	CONCRETE	YES	YES
73	CONCRETE	YES	YES
74	CONCRETE	YES	YES
75	CONCRETE	YES	YES
76	CONCRETE	YES	YES
77	CONCRETE	YES	YES
78	CONCRETE	YES	YES
79	CONCRETE	YES	YES
80	CONCRETE	YES	YES
81	CONCRETE	YES	YES
82	CONCRETE	YES	YES
83	CONCRETE	YES	YES
84	CONCRETE	YES	YES
85	CONCRETE	YES	YES
86	CONCRETE	YES	YES
87	CONCRETE	YES	YES
88	CONCRETE	YES	YES
89	CONCRETE	YES	YES
90	CONCRETE	YES	YES
91	CONCRETE	YES	YES
92	CONCRETE	YES	YES
93	CONCRETE	YES	YES
94	CONCRETE	YES	YES
95	CONCRETE	YES	YES
96	CONCRETE	YES	YES
97	CONCRETE	YES	YES
98	CONCRETE	YES	YES
99	CONCRETE	YES	YES
100	CONCRETE	YES	YES

- [illegible]



CONTACT INFORMATION

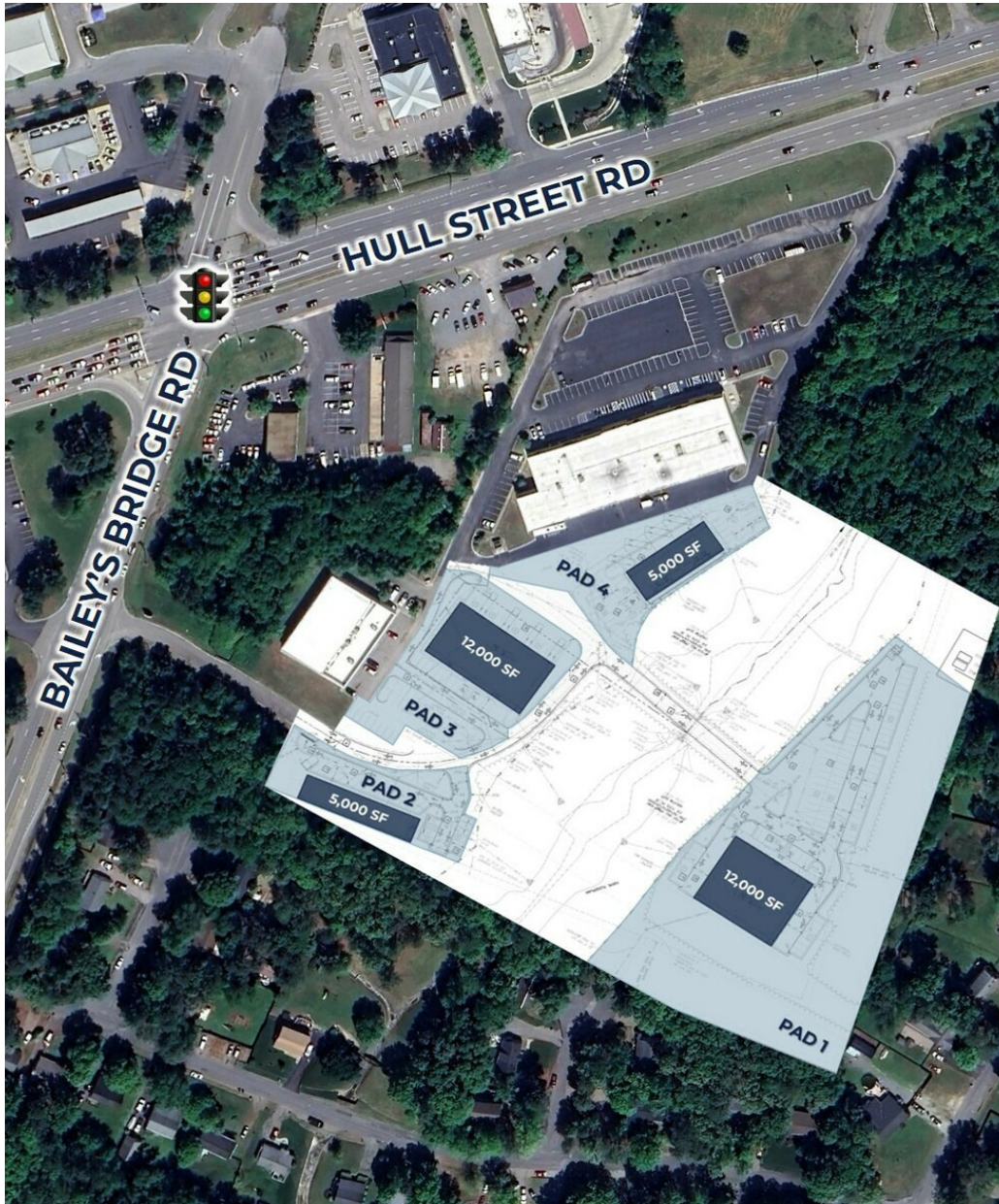
13.87 AC LAND/PAD SITES

11519 - 11551 Hull Street Rd | Midlothian, VA 23112



S.L. NUSBAUM

REALTY CO.



ANDREW BRODIE

Senior Associate

C. 804.759.5970

O. 804.944.9254

abrodie@slnusbaum.com

EMMA WILL

Associate

C. 804.821.9042

O. 804.508.7283

ewill@slnusbaum.com

TRIB SUTTON

Senior Director

C. 804.337.6525

O. 804.477.8785

tsutton@slnusbaum.com

COMMITMENT. INTEGRITY. EXCELLENCE. SINCE 1906.

Serving the Southeast and Mid-Atlantic region for well over a century, S.L. Nusbaum Realty Co. continues to provide a comprehensive experience for our clients and customers in all aspects of the multifamily and commercial real estate industry.

CLICK HERE TO LEARN MORE

DISCLAIMER:

No warranty or representation, expressed or implied, is made to the accuracy or completeness of the information contained herein, and same is submitted subject to errors, omissions, change of price, rental or other conditions, withdrawal without notice, and to any special listing conditions imposed by the property owner(s). As applicable, we make no representation as to the condition of the property (or properties) in question or the property's (or properties') compliance with applicable laws, regulations, and codes.