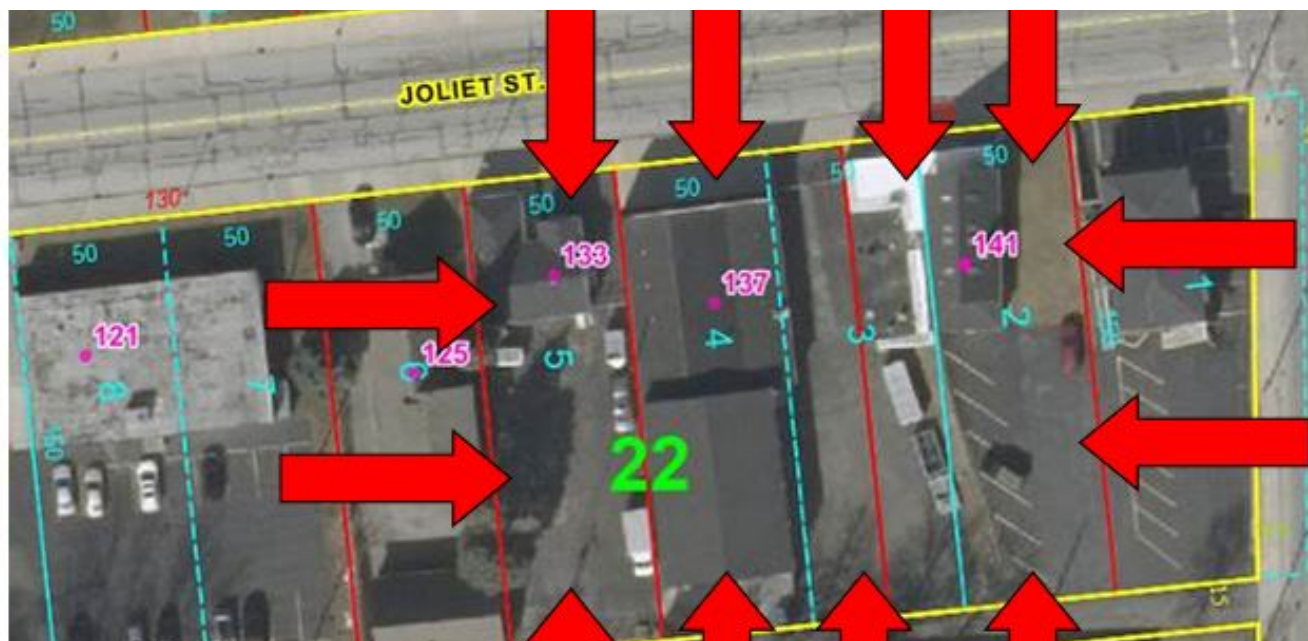
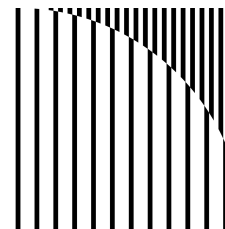


Zoned C-2 | Downtown Schererville

# 133-141 Joliet Street



Location	Assessor Pin: 45.11.15.106-008 thru 010.000-036
Site Size:	31,200 +/- Square Feet
Frontage	200 ft
Currently	HVAC Contractor   Office Use
Possession	To be Determined
Price	<b>\$999,900</b>

## Katherine Bultema

Lic. R.E. Broker  
M: 219.545.9200  
katherine.bultema@compass.com

- The improvements consist of a 1,128 sq.ft. office building on 133 Joliet, a 5,670 sq.ft. warehouse building on 137 Joliet Street, a 4,616 sq.ft. office/warehouse building on 141 Joliet.
- Available parking exists on each parcel, largely located on lots at the rear portion of each parcel with space for approximately 10-12 cars per parcel
- Prime location within the town of Schererville, approximately 28 miles southeast of Chicago, Capabilities to be included in Schererville's Riverfront District, mere miles from the Kennedy Avenue & US 30 expansion project.

**COMPASS**  
COMMERCIAL