

SALE PRICE: \$222,270



E. GROVE STREET, NANTICOKE, PA 18634

LATITUDE: 41.202551

LONGITUDE: -75.984480

Vacant wooded land at the end of East Grove Street of Nanticoke in Hanover Township consisting of 5 small parcels and 1 larger parcel zoned MU (Mixed Use). East Grove Street Nanticoke is a residential neighborhood nearby Greater Nanticoke High School and the Luzerne County Community College. Majority of land located in Hanover Township is near industrial buildings at the edge of the Township.

PROPERTY DETAILS:

16.62 Acre Parcel - Hanover Twp.

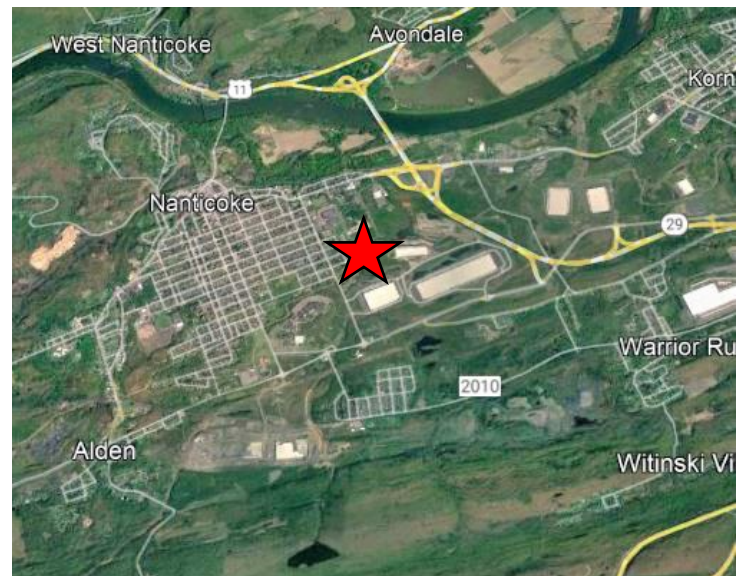
- PIN: J7SE2VARVAR-25
- Zoned M-U (Mixed Use)
- Clean and Green
- 2024 Taxes - \$28.00

For Information Contact:

Julia D. Namutka, Sales Associate

jnamutka@mericle.com

Office: 570.823.1100 * Cell: 570.881.9512



Information shown is purported to be from reliable sources. No representation is made to the accuracy thereof, and is submitted subject to errors, omissions, prior sale/lease, withdrawal notice, or other conditions.

570.823.1100
mericle.com



East Mountain Corporate Center
100 Baltimore Drive
Wilkes-Barre, PA 18702

Developing Northeastern Pennsylvania's I-81 Corridor Since 1985

TCN
WORLDWIDE
REAL ESTATE SERVICES