

1100 S. EASTERN AVENUE
OKLAHOMA CITY, OK 73129

Industrial Buildings with Excess Land For Sale

20,903 SF on 33 Acres MOL

REDUCED Sales Price: \$6,900,000



NAIRED

COMMERCIAL
REAL ESTATE



NAIRED

405.840.0600
NAIRED.COM

BOB SULLIVAN, CCIM
405.641.9798
RSULLIVAN@CCIM.NET

CLARK EVERETT
405.985.8424
CLARK@NAIRED.COM

NAI Red is pleased to present 1100 South Eastern Avenue, near downtown Oklahoma City. This Class-A industrial site is ideal for fleet maintenance or manufacturing and features a service building constructed in 2012 with large work bays, central lubrication battery, fenced gravel yard, 20' clear height, three 10-ton bridge cranes, a total of 20 oversized overhead doors, high power service, and a paint booth -- all within 1 mile of entrances to I-35 and I-40. This parcel includes undeveloped land allowing for expansion.



NAIRED

405.840.0600

NAIRED.COM

BOB SULLIVAN, CCIM

405.641.9798

RSULLIVAN@CCIM.NET

CLARK EVERETT

405.985.8424

CLARK@NAIRED.COM



PROPERTY HIGHLIGHTS

- Approximately 3,700 SF of Separate Office Space
- 3 Phase Power / 1,075 Amps
- 20' Clear Ceiling Height
- Security Cameras throughout Property
- Excellent Fleet Maintenance or Manufacturing Site
- Zoned: I-2
- Local & State Incentives may be Available for Out-of-Area Qualifying Manufacturers

LOCATION HIGHLIGHTS

- Less than 1 Mile to I-35/I-40 Entrance Ramps
- 12 Miles from Will Rogers World Airport

NAIRED

405.840.0600
NAIRED.COM

BOB SULLIVAN, CCIM
405.641.9798
RSULLIVAN@CCIM.NET

CLARK EVERETT
405.985.8424
CLARK@NAIRED.COM



NORTH BUILDING HIGHLIGHTS

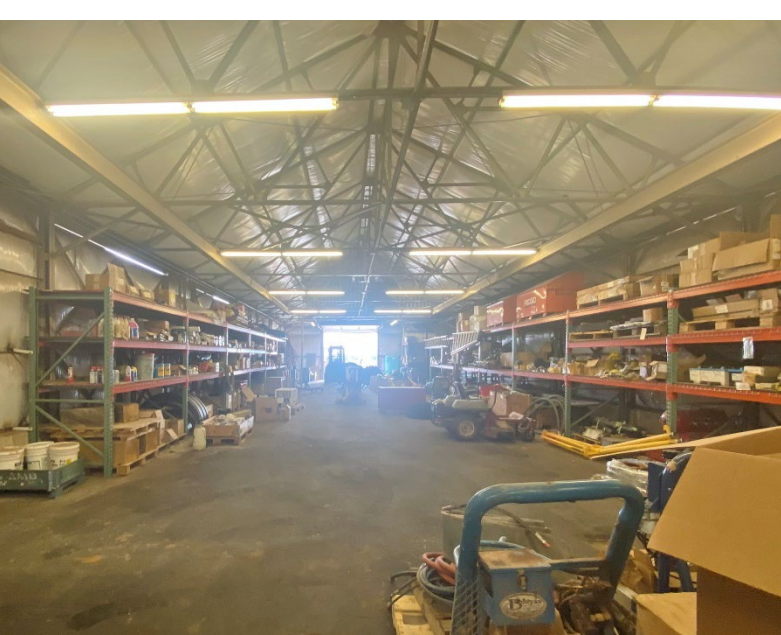
- 13,575 SF
- (1) – 35' x 18' Overhead Door
- (10) – 14' x 18' Drive-Thru Overhead Doors
- (2) – 20' x 18' Drive-Thru Overhead Doors
- Fire Break Wall Separating Welding Bay
- (3) 10 Ton Bridge Cranes
- Lubricant Lines Provided to Each Bay

NAIRED

405.840.0600
NAIRED.COM

BOB SULLIVAN, CCIM
405.641.9798
RSULLIVAN@CCIM.NET

CLARK EVERETT
405.985.8424
CLARK@NAIRED.COM



SOUTH BUILDING HIGHLIGHTS

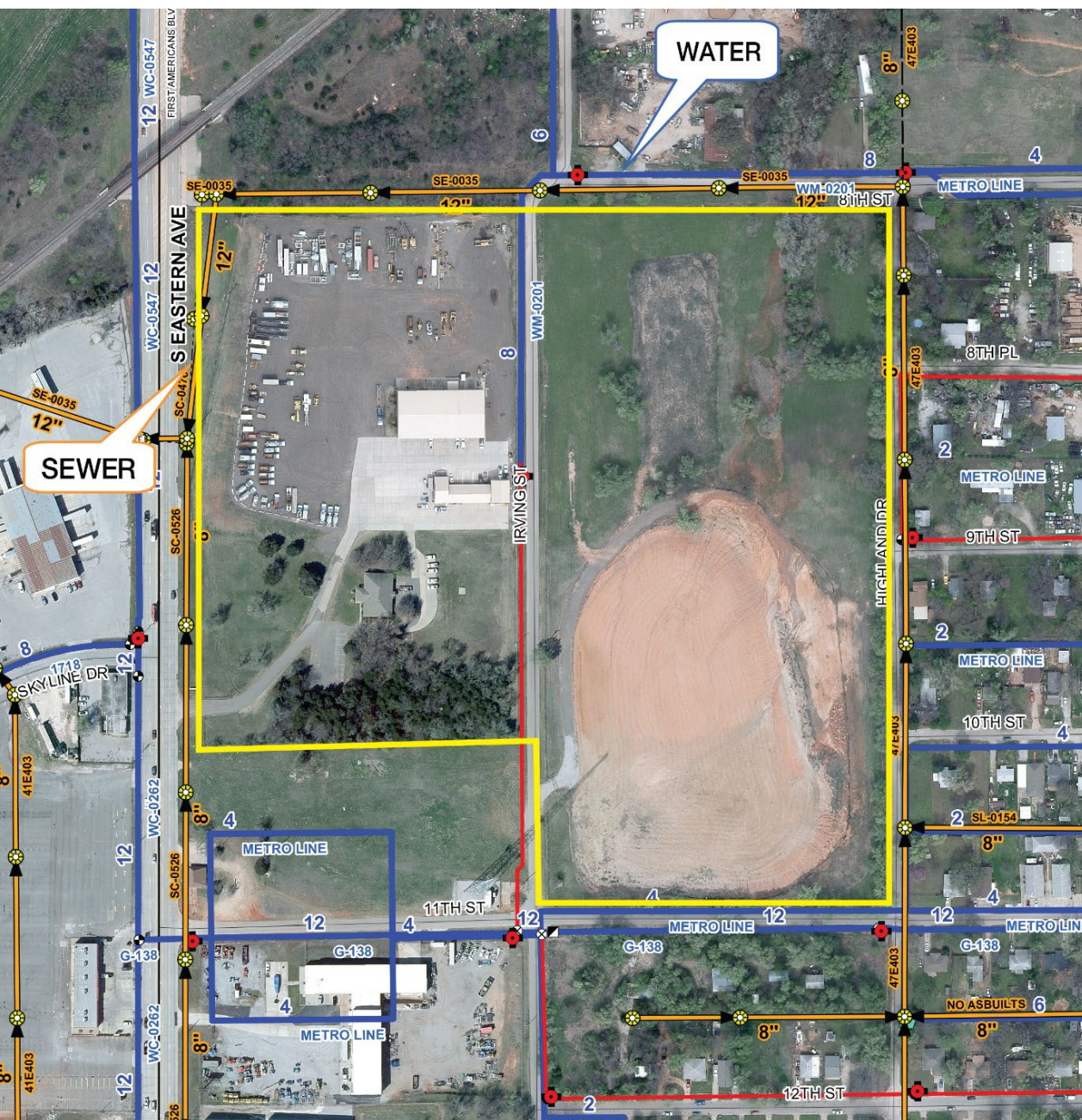
- 3,628 SF
- (7) – 12' x 11' Overhead Doors
- Paint Booth

NAIRED

405.840.0600
NAIRED.COM

BOB SULLIVAN, CCIM
405.641.9798
RSULLIVAN@CCIM.NET

CLARK EVERETT
405.985.8424
CLARK@NAIRED.COM

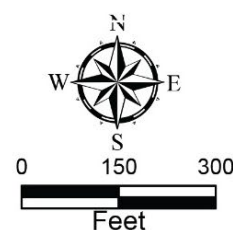


Oklahoma City
Water
Utilities Trust

Legend

- Sewer Manhole
- Abandoned WWM
- Wastewater Main
- Removed WWM
- Hydrant
- Water Meter
- Abandoned WM
- Water Main

Neither the City nor any of its Trusts nor any of their employees, officers, or agents warrant or represent that the information or data on this document is accurate or appropriate for use or re-use for any purpose. The user of this document assumes the sole duty and full responsibility for the verification of the information and data contained therein. Any use of reliance upon this document of the information or data contained therein is solely, totally, and exclusively at the users own risk.



Created by: Rick Kyle Melson II

NAIRED

405.840.0600
NAIRED.COM

BOB SULLIVAN, CCIM
405.641.9798
RSULLIVAN@CCIM.NET

CLARK EVERETT
405.985.8424
CLARK@NAIRED.COM



DEMOGRAPHICS

	1 MILE	3 MILE	5 MILE
POPULATION	1,565	63,340	199,298
AVERAGE HOUSEHOLD INCOME	\$41,047	\$53,705	\$57,048
TOTAL HOUSEHOLDS	613	24,691	76,859

NAIRED

405.840.0600
NAIRED.COM

FOLLOW US @NAIRED_CRE



No warranty or representation, express or implied, is made as to the accuracy of the information contained herein, and the same is submitted subject to errors, omissions, change of price, rental or other conditions, prior to sale, lease, or financing, or withdrawal without notice, and of any special listing conditions imposed by our principals no warranties or representations are made as to the condition of the property or any hazards contained therein are any to be implied.