

FOR LEASE

PRICE REDUCED!

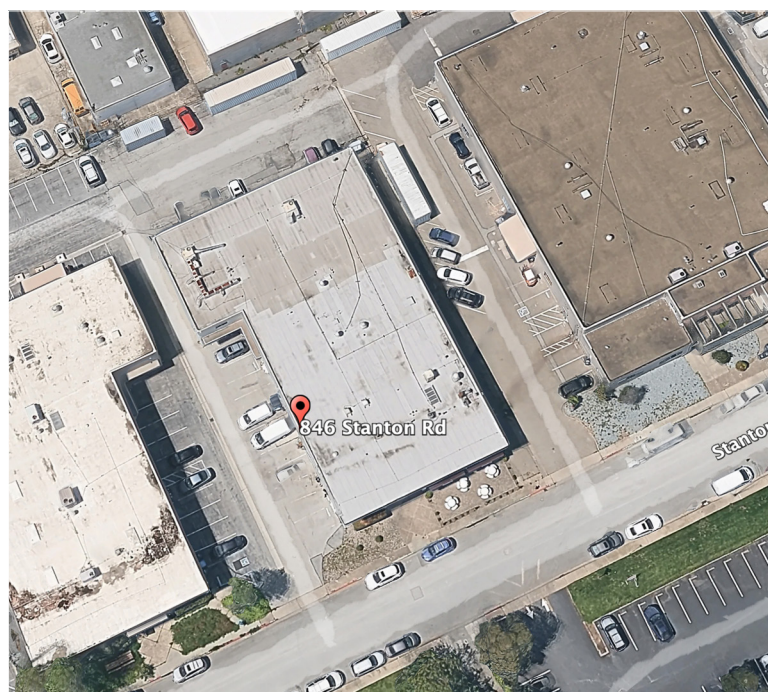
Warehouse and Office Space

846 Stanton Road, Burlingame, CA 94010



Building Details

- **Total Available Area: ±13,119 SF**
 - ±8,167 SF Ground Floor
 - ±4,952 SF Second Floor
- **Asking Rent: \$1.95 \$1.75 Gross PSF**
- Building Size: ±22,190 SF
- Lot Size: ±28,200 SF
- Ceiling Height: 18' - 20'
- 2 Stories
- 15 Surface Parking
- Drive-Ins: 3 Total
- Power: 400 Amps 3 Phase
- Quick Access to Highway 101, about 10 minutes to San Francisco International Airport, Millbrae and Downtown Burlingame.
- [Zoning: I/I \(Innovation Industrial\)](#)



Contact Agents for More Details



ANDREW PECEIMER

Senior Commercial Real Estate Advisor

DRE # 00993289

M: 650.208.4971

O: 650.344.4300

apeceimer@cbcburlingame.com



GARRETT SWARTZ

Commercial Real Estate Advisor

DRE # 02178894

M: 925.222-0933

O: 650.352.3302

gswartz@cbcburlingame.com



**COLDWELL BANKER
COMMERCIAL**
WESTBAY REAL ESTATE
GROUP

1575 Bayshore Highway, Suite 100,
Burlingame CA 94010

©2025 Coldwell Banker Real Estate LLC, dba Coldwell Banker Commercial Westbay Real Estate Group. All rights reserved. Coldwell Banker Commercial® and the Coldwell Banker Commercial logo are registered service marks owned by Coldwell Banker Real Estate LLC. Coldwell Banker Real Estate LLC, dba Coldwell Banker Commercial Affiliates fully supports the principal of the Fair Housing Act and the Equal Opportunity Act. Each office is independently owned and operated. The information provided is deemed reliable, but it is not guaranteed to be accurate or complete, and it should not be relied upon as such. This information should be independently verified before any person enters into a transaction based upon it.

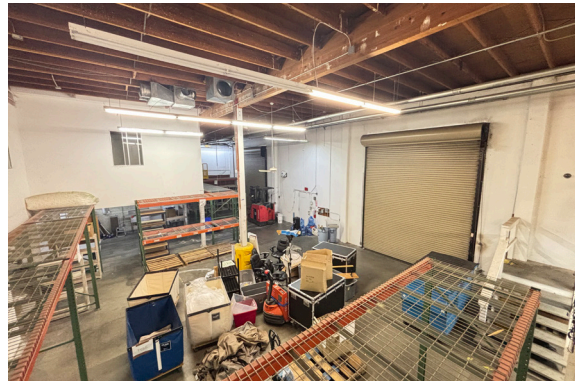
FOR LEASE

PRICE REDUCED!

Warehouse and Office Space

846 Stanton Road, Burlingame, CA 94010

Interior Photos:



Contact Agents for More Details



ANDREW PECEIMER

Senior Commercial Real Estate Advisor

DRE # 00993289

M: 650.208.4971

O: 650.344.4300

apeceimer@cbcburlingame.com



GARRETT SWARTZ

Commercial Real Estate Advisor

DRE # 02178894

M: 925.222-0933

O: 650.352.3302

gswartz@cbcburlingame.com



**COLDWELL BANKER
COMMERCIAL**
WESTBAY REAL ESTATE
GROUP

1575 Bayshore Highway, Suite 100,
Burlingame CA 94010