

FOR SUBLEASE

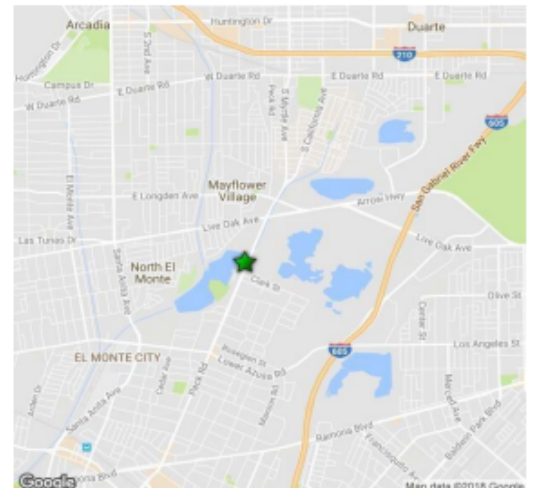
4,875 SQ. FT. MULTI-TENANT INDUSTRIAL BUILDING

167 Mason Way Suite A6, City Of Industry, CA 91745



PROPERTY DETAILS

- +/- 4,875 SF with +/- 700 SF of office
- Secure Business Park with Electronic Gated Access
- 24' Clearance Height
- One (1) Drive-In Door & One (1) Dock High Door
- Convenient Access to 60, 605 & 10 Freeways
- 200 Amps 277/480 Volt 3 Phase 4 Wire Power
- Lease expires 8/31/2027



David Gatherer
Senior Associate
DRE 02060116

- +1 626 487 3560
- D.gatherer@foremost-cre.com

FOR LEASE

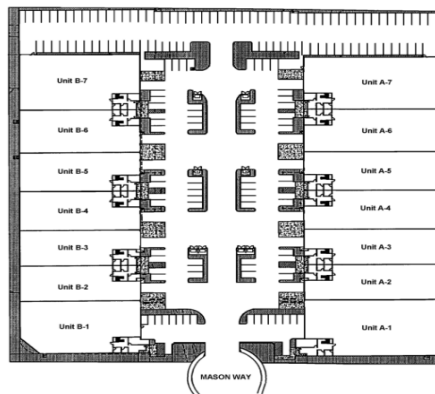
+/- 4,875 SF AVAILABLE

167 Mason Way, Suite A6, INDUSTRY, CA 91745



SITEPLAN

Exhibit "A1"
The Project Site Plan
Valley Springs Industrial Center

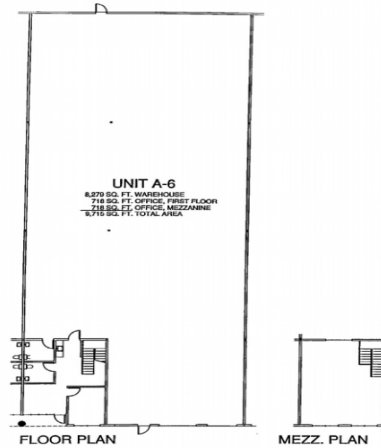


Premises Floor Plan

Premises Floor Plan
Valley Springs Industrial Center

Suite: **Unit A6** Size: approximately **9,715** square feet

This plan is a graphic representation and may vary in layout and approximate square footage.



FOR LEASE
+/- 4,875 SF AVAILABLE

167 Mason Way, Suite A6, INDUSTRY, CA 91745



PHOTOS



CONTACT

David Gatherer
Senior Associate
DRE 02060116

- +1 626 487 3560
- D.gatherer@foremost-cre.com

This information has been obtained from sources believed reliable, but has not been verified for accuracy or completeness. You should conduct a careful, independent investigation of the property and verify all information. Any reliance on this information is solely at your own risk. Photos herein are the property of their respective owners. Use of these images without the express written consent of the owner is prohibited.