



FOR LEASE
100-140

CHAPARRAL COURT,
ANAHEIM, CA 92808

PROPERTY FEATURES

- Suites range in size from 800 – 4,000 SF
- Ground Floor and 2nd Story Space Available
- Abundant free and in-common parking at a ratio of $\pm 4:1$
- Fully Fire Sprinklered
- Adjacent to Anaheim Hills Festival Center Regional Mall / 8 Plex Theatre
- Excellent Freeway Access to the Riverside (91) and Eastern Transportation Corridor (SR241)



Russ Smith

VICE PRESIDENT
(949) 565 - 5595

russ.smith@sperrycga.com
CA # 01919442

MONTE VISTA RD.

CHAPARRAL CT.

KAISER BLVD.



AVAILABILITY

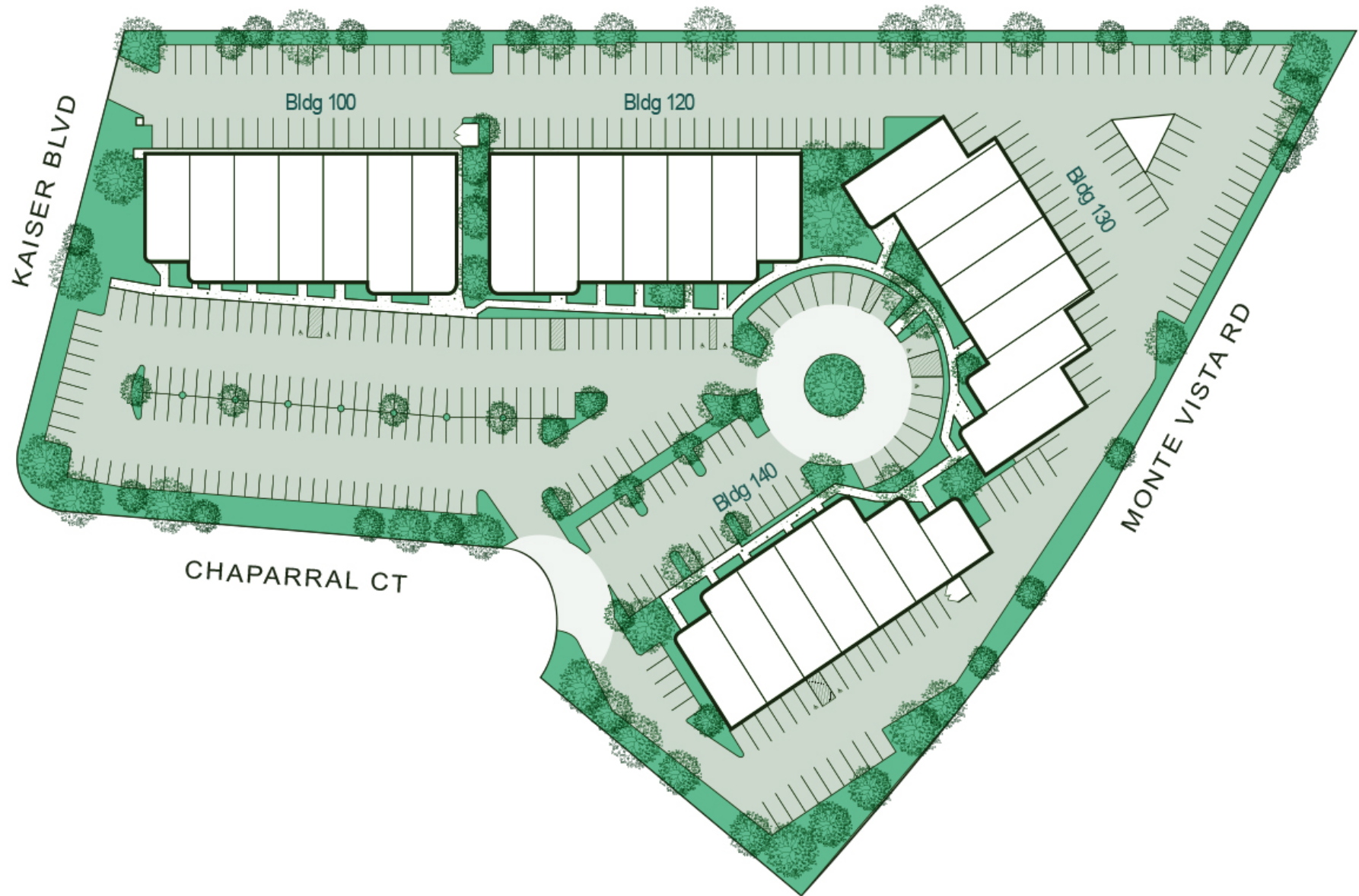


Building	Suite(s)	Rent/SF	Lease Rate	Comments
130 Chaparral Court	200	2,298	\$1.90 FSG	4 Private offices, conference room, open area, reception
130 Chaparral Court	210	852	\$1.90 FSG	2 Private offices and open area
130 Chaparral Court	240	832	\$1.90 FSG	Large open area
130 Chaparral Court	246	833	\$1.90 FSG	2 Private offices and large open area
140 Chaparral Court	220	1,292	\$1.80 FSG	Large open area, 2 private offices
140 Chaparral Court	230	2,068	\$1.65 MG	2 Private offices, large open area & restroom
140 Chaparral Court	240	2,064	\$1.65 MG	2 Private offices, large open area, restroom
140 Chaparral Court	250-260	3,695	\$1.75 FSG	5 Offices, large open area, kitchen, & restrooms

PROPERTY PICTURES



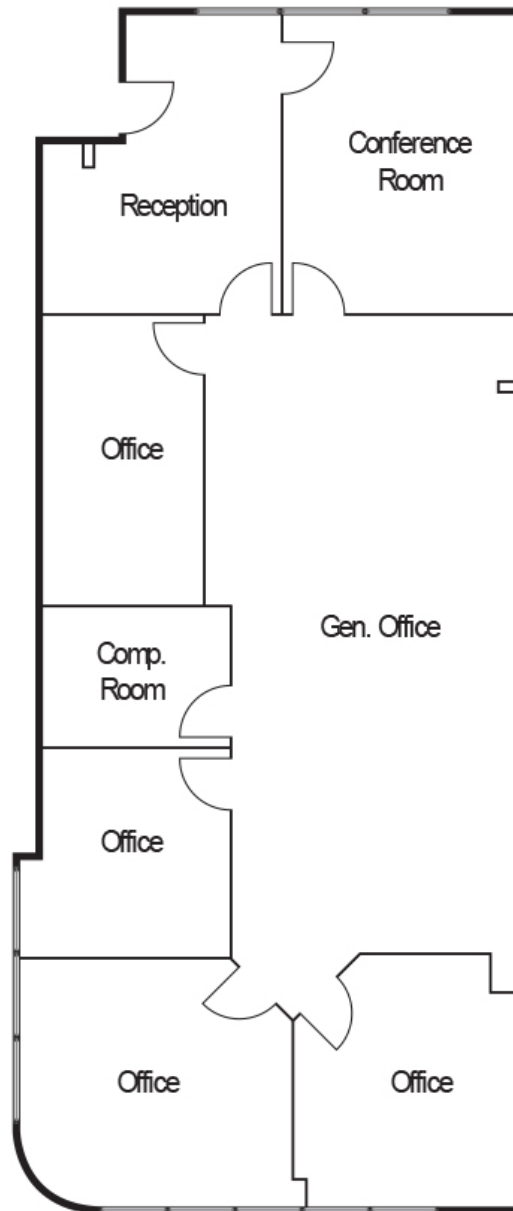
SITE PLAN



FLOOR PLANS

+ 2,298 Square Feet

130 Chaparral Court, Suite 200
Anaheim, CA

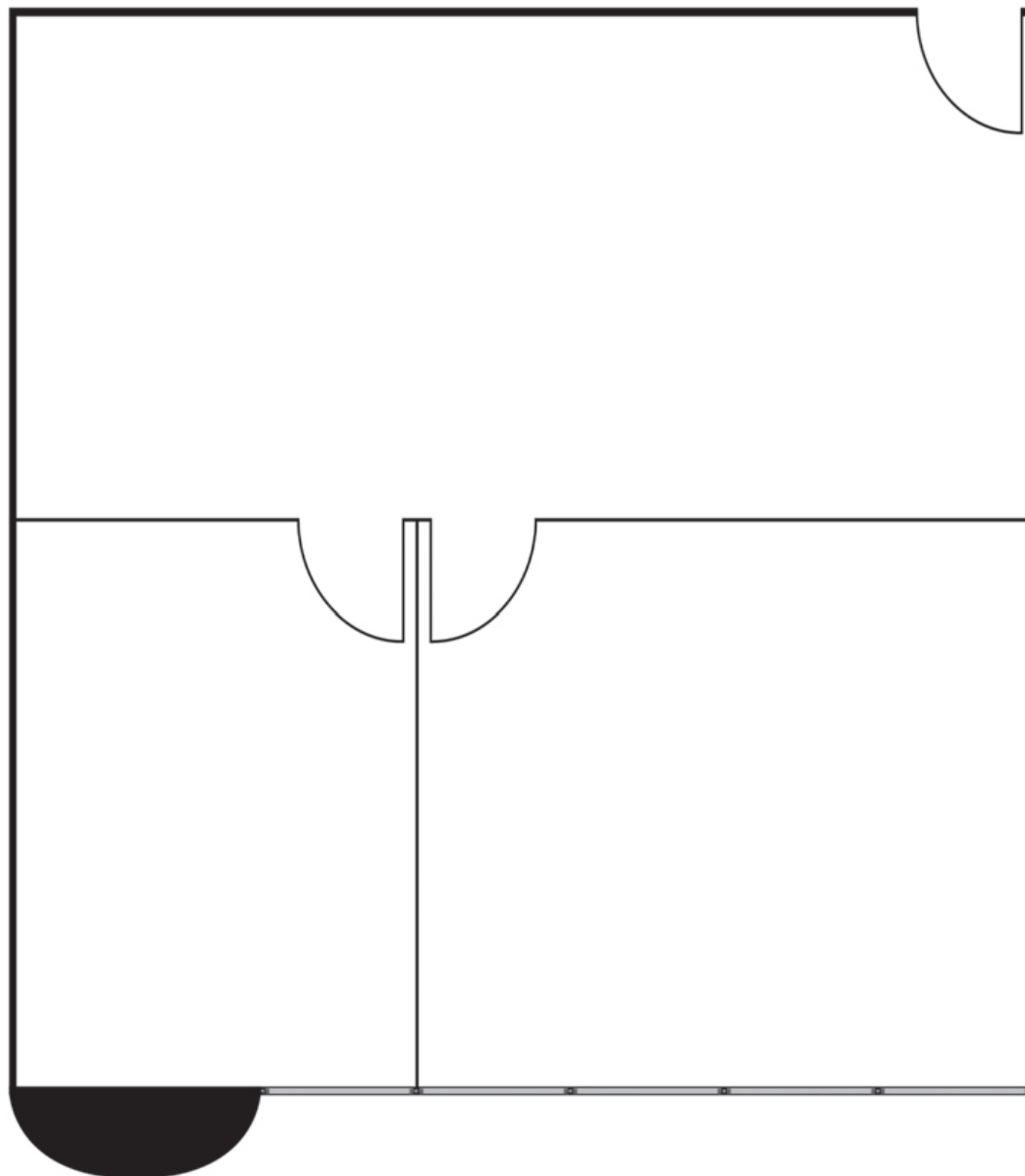


FLOOR PLANS



+ 852 Square Feet

130 Chaparral Court, Suite 210
Anaheim, CA

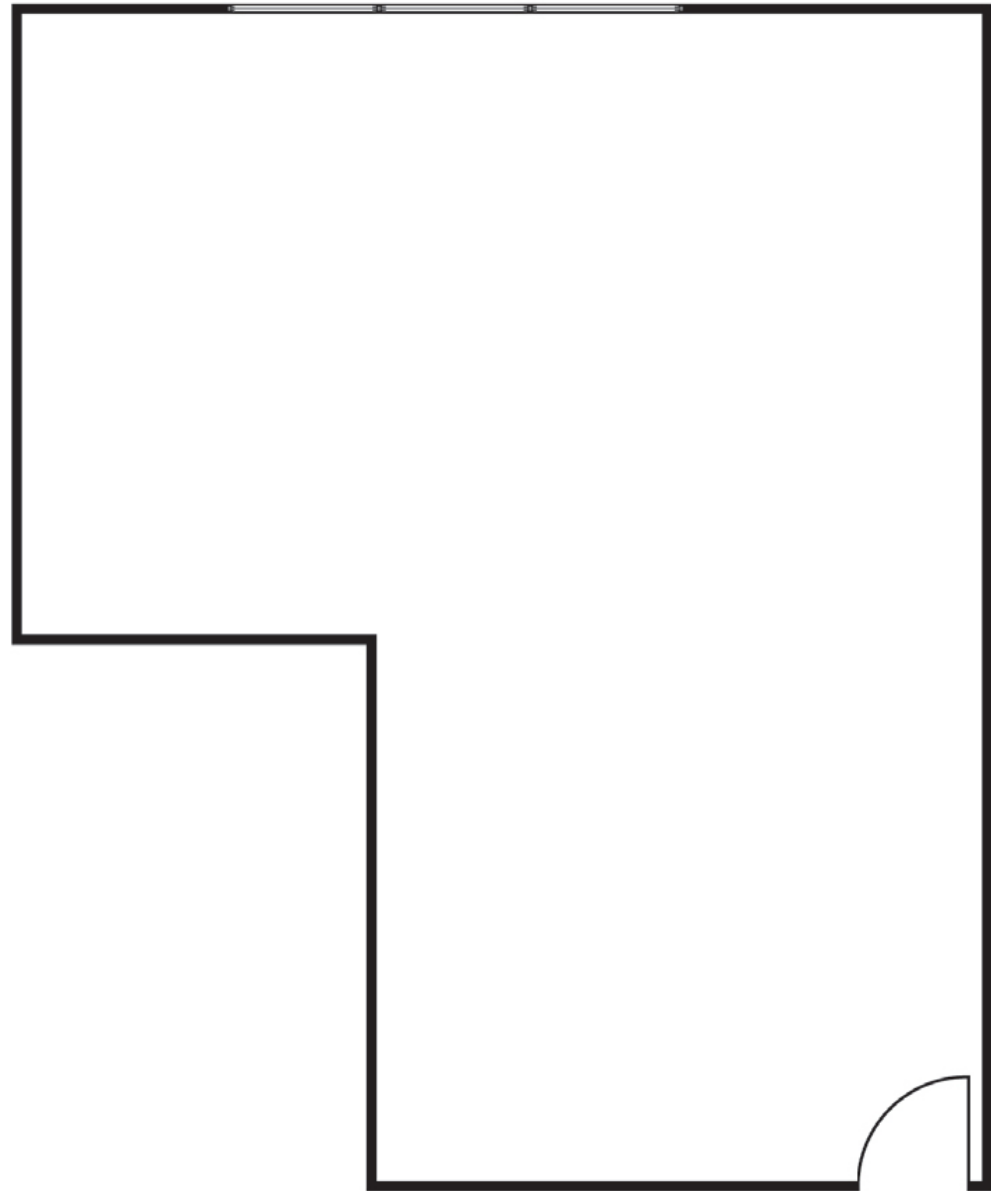


FLOOR PLANS



+ 832 Square Feet

130 Chaparral Court, Suite 240
Anaheim, CA

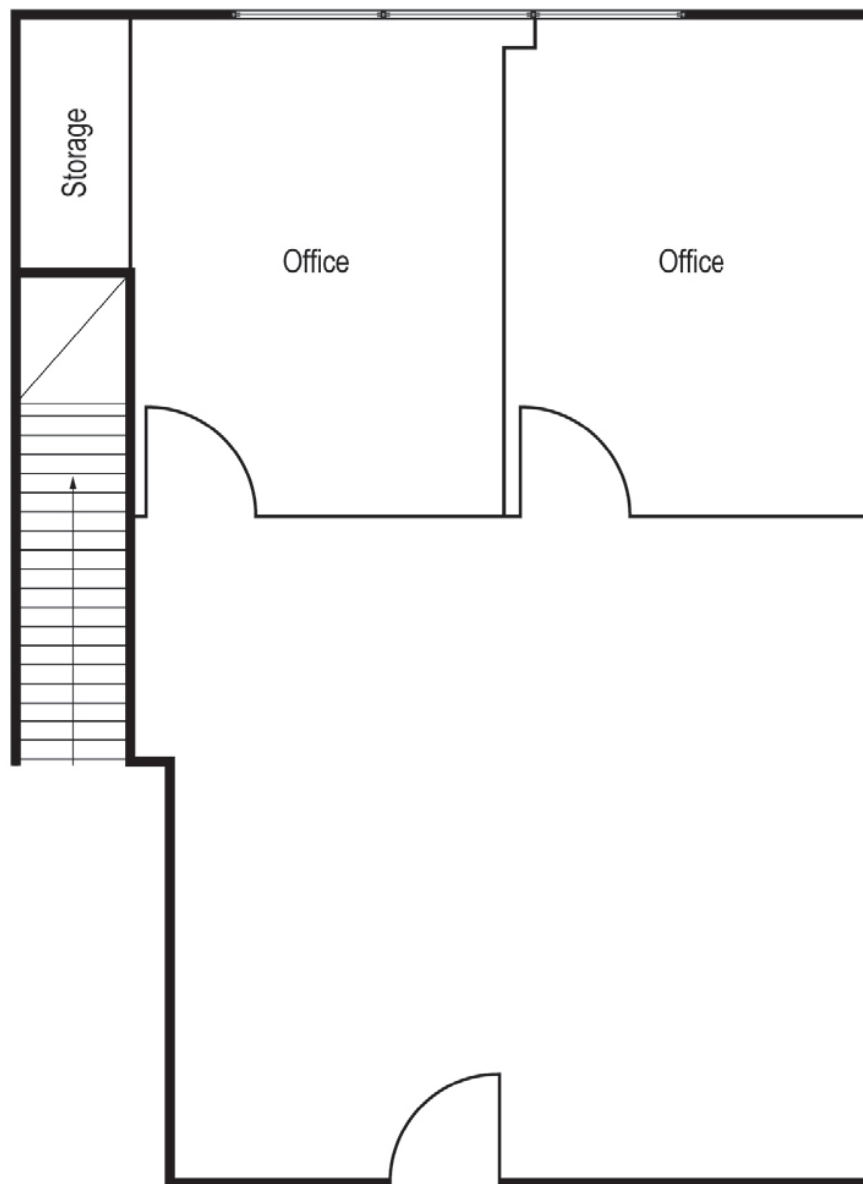


FLOOR PLANS



+ 833 Square Feet

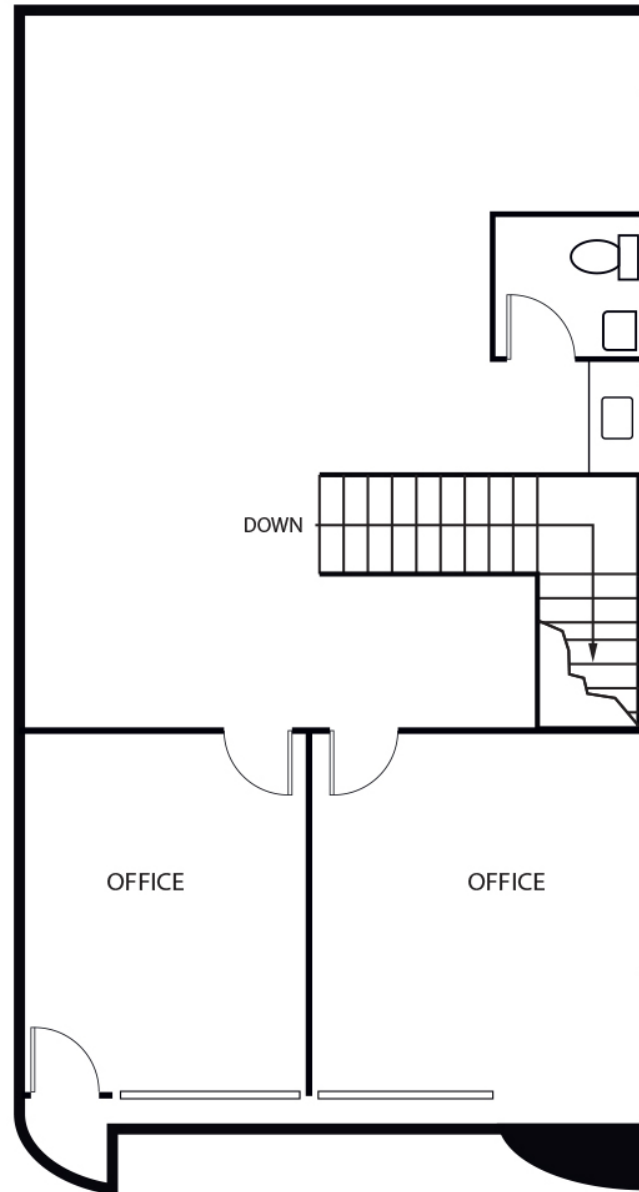
130 Chaparral Court, Suite 246
Anaheim, CA



FLOOR PLANS

+ 1,292 Square Feet

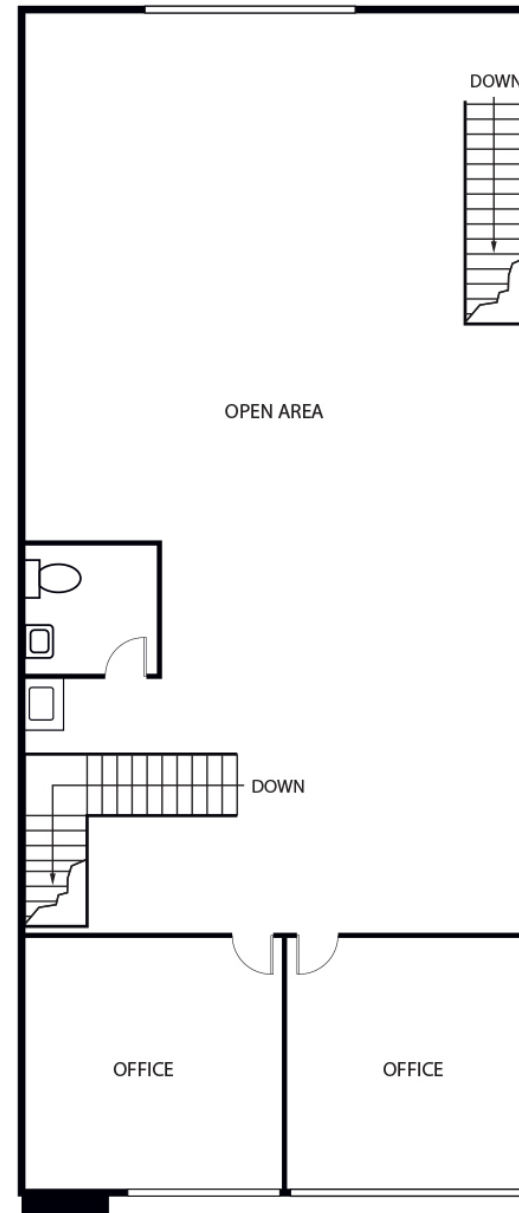
140 Chaparral Court, Suite 220
Anaheim, CA



FLOOR PLANS

+ 2,068 Square Feet

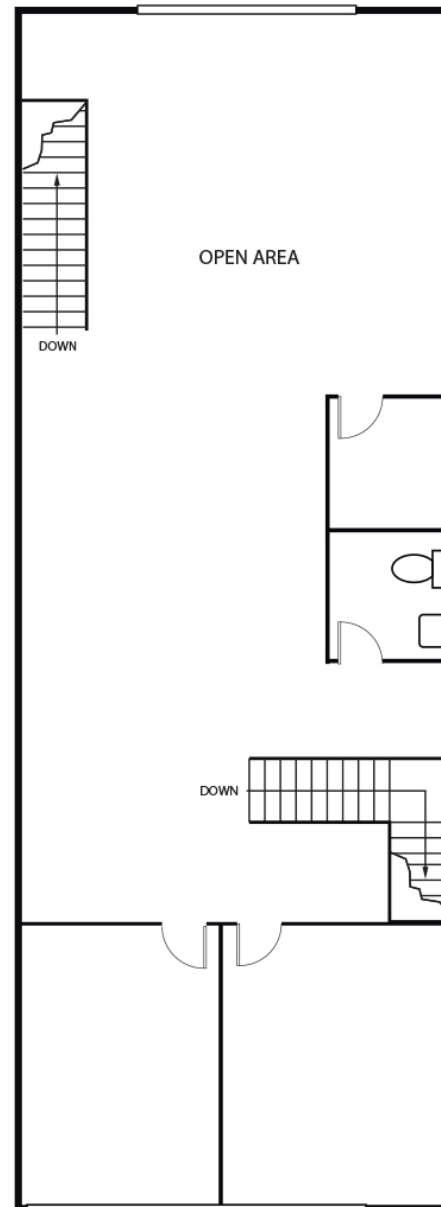
140 Chaparral Court, Suite 230
Anaheim, CA



FLOOR PLANS

+ 2,064 Square Feet

140 Chaparral Court, Suite 240
Anaheim, CA



FLOOR PLANS



+ 3,695 Square Feet

140 Chaparral Court, Suite 250-260
Anaheim, CA

