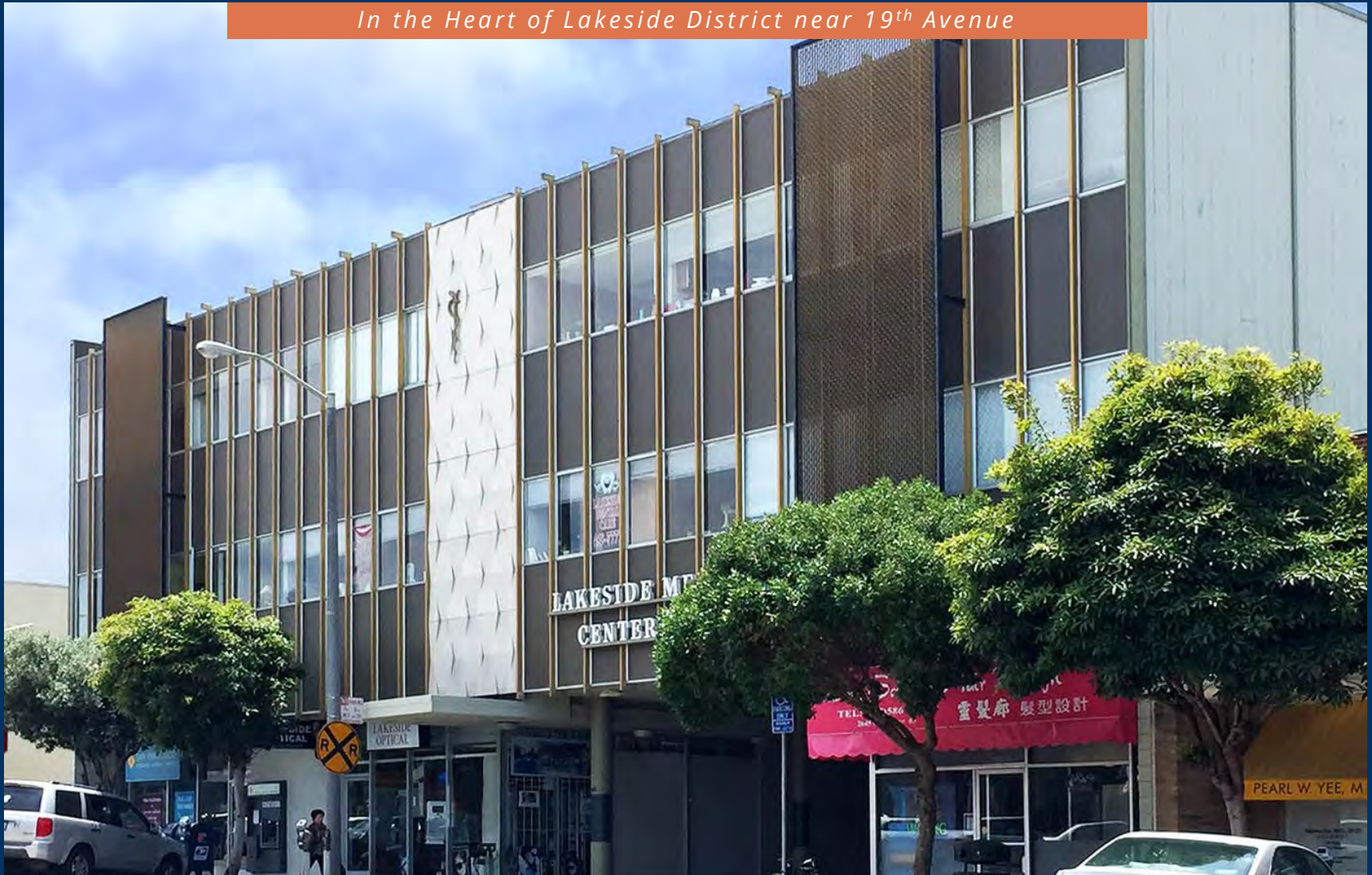


BAYSIDE REALTY PARTNERS PRESENTS

Lakeside Medical Center

2645 Ocean Avenue, San Francisco

In the Heart of Lakeside District near 19th Avenue



TRASK LEONARD
President and CEO
650.533.2591
tleonard@baysiderp.com
DRE#01152101



GRACE LINDBERG
Vice President
415.307.0252
glindberg@baysiderp.com
DRE#02230832



Lakeside Medical Center

2645 Ocean Avenue, San Francisco

LOCATION

- On-site and neighborhood/ street patient parking
- Reserved physician parking in deck available
- Four miles to Seton Medical Center
- Three miles to UCSF Medical Center



BUILDING

- Professional medical/dental suites from approximately 1,000 sf
- Stable secure ownership
- Muni stop at the building
- Views of Stern Grove and the Pacific Ocean
- Stonestown Galleria two blocks away



Lakeside Medical Center

2645 Ocean Avenue, San Francisco



Lakeside Medical Center

2645 Ocean Avenue, San Francisco



Suite 205



Suite 205



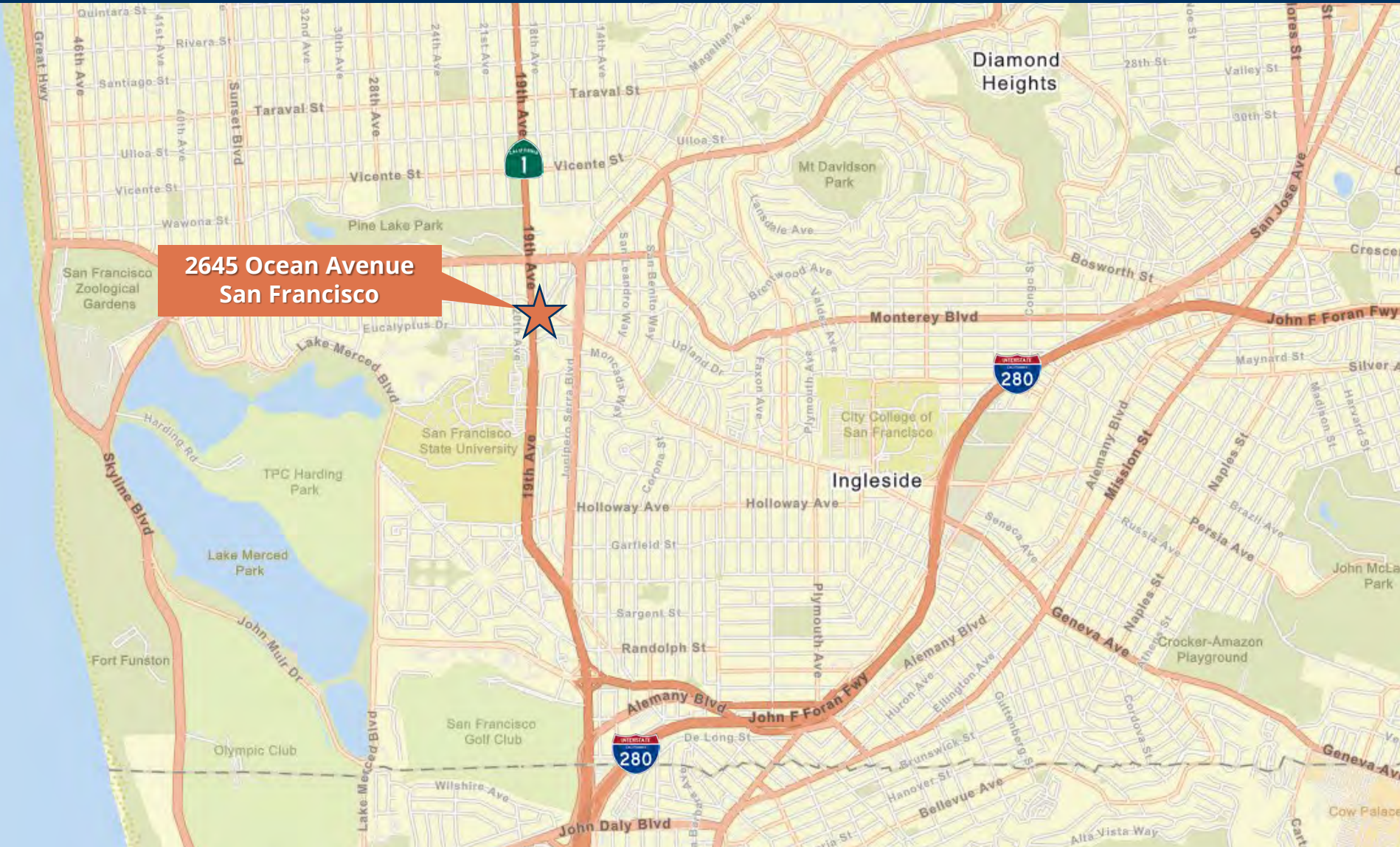
Suite 205



Suite 205

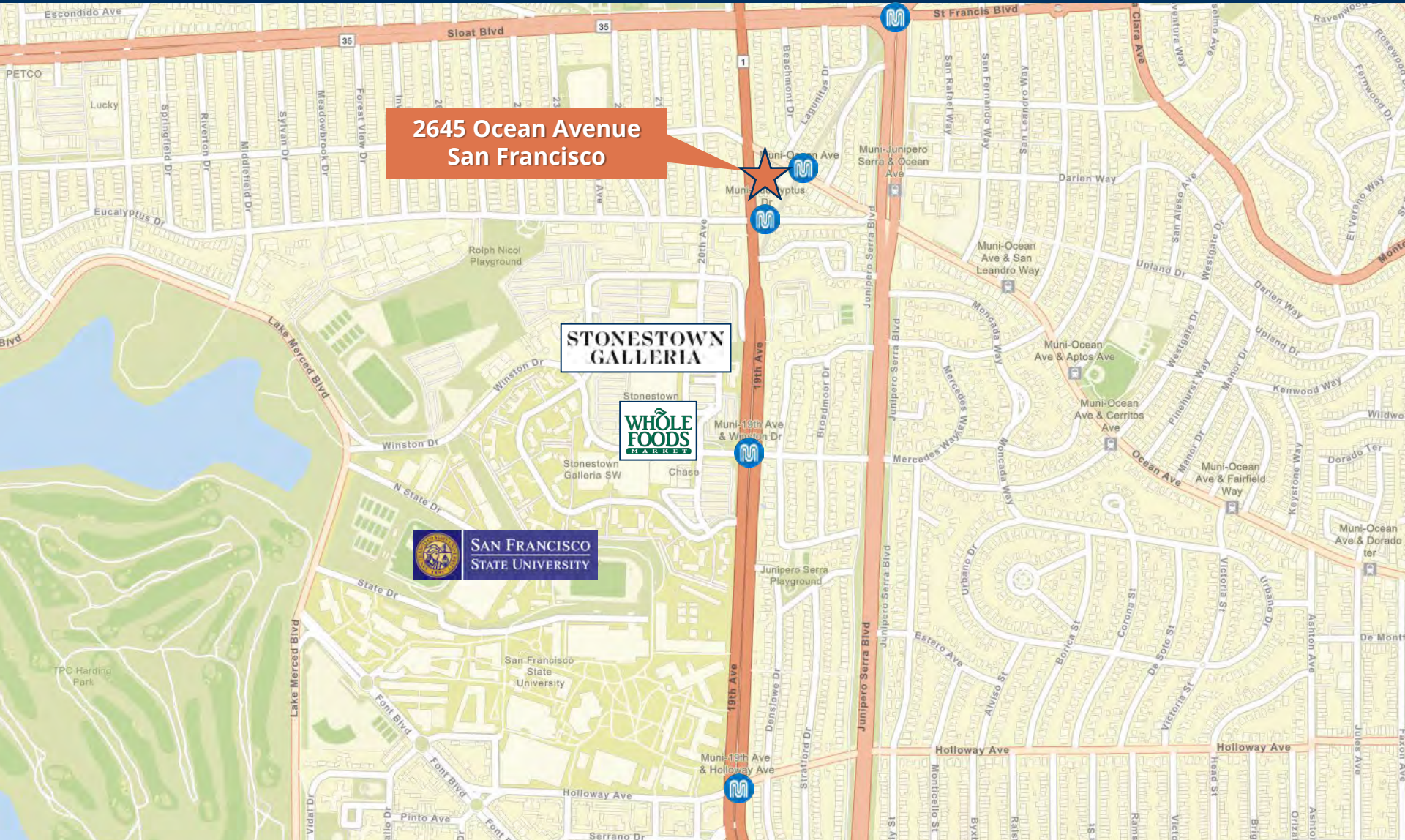
Lakeside Medical Center

2645 Ocean Avenue, San Francisco



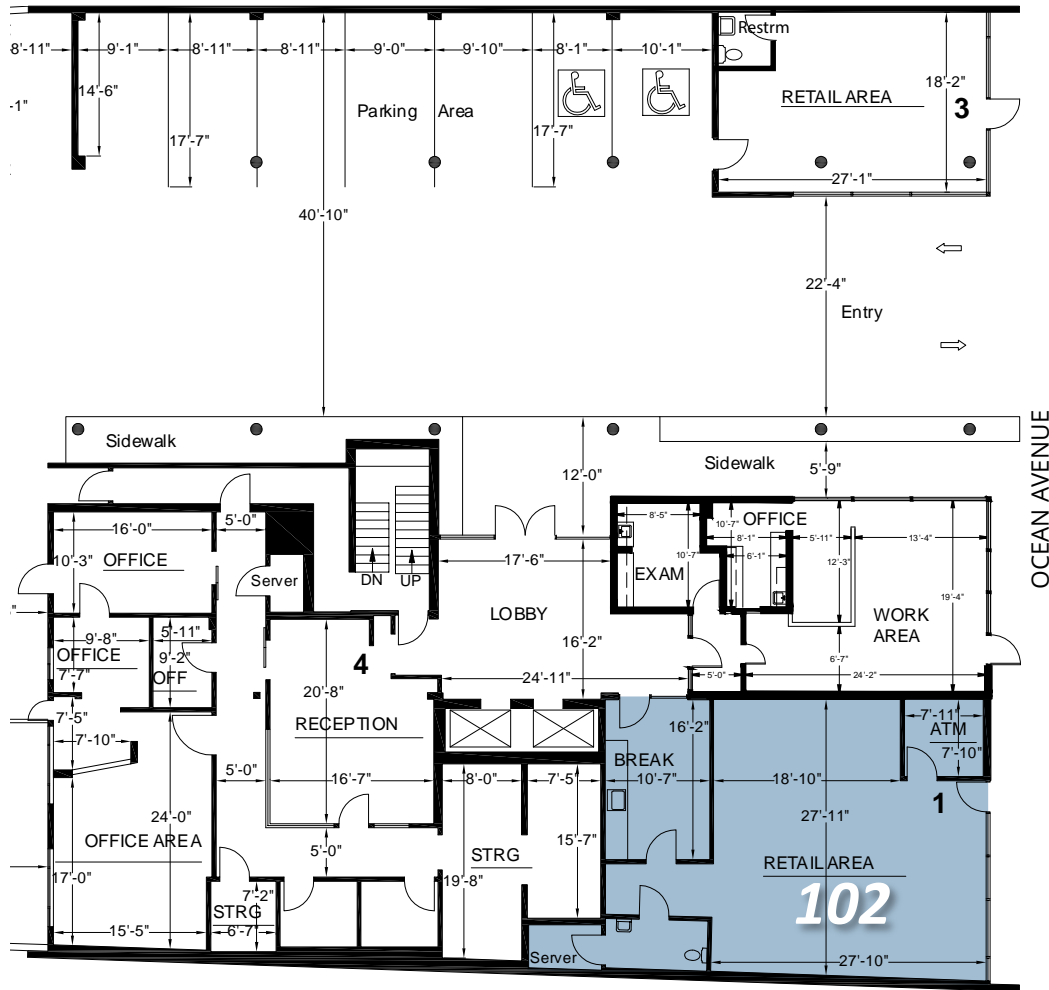
Lakeside Medical Center

2645 Ocean Avenue, San Francisco



Lakeside Medical Center

2645 Ocean Avenue, San Francisco



FIRST FLOOR

Suite 102 1,190 RSF

Former bank space. Open area, restroom, break room

Lakeside Medical Center

2645 Ocean Avenue, San Francisco



SECOND FLOOR

Suite 202 1,895 RSF

4 exam rooms, 2 large offices, located on building corner with views and excellent natural light. Modern medical build out

Suite 205 1,105 RSF

2 exam rooms, 1 office, break room. Located on corner of building with views of ocean and excellent natural light. Upgraded space

Meet Your Expert Team



TRASK LEONARD

President and CEO

650.533.2591

tleonard@baysiderp.com

DRE#01152101



GRACE LINDBERG

Vice President

415.307.0252

glindberg@baysiderp.com

DRE#02230832

BAYSIDE REALTY PARTNERS

The preeminent provider of management, leasing, construction management and accounting services for healthcare properties.



MARKET LEADER

- Leasing & Property Management
- Investment Sales
- Tenant Representation
- Construction Management
- Property Repositioning



INFLUENTIAL NETWORK

- Institutional Investors
- Healthcare Systems and Healthcare Districts
- Physicians & Districts
- Private Investors



DOMINANT FOOTPRINT

- 2 million SF leased & managed
 - 50+ MOB portfolio
 - 10,000-240,000 SF
 - 500,000 SF portfolio
- San Francisco's largest MOBs
- 950+ leases executed
- 500+ medical and dental tenants

DOMINANT. EXPERT. INFLUENTIAL.