



13.08 Acres on US Hwy 441

Offering Summary

Sale Price: \$129,000 / acre

- Convenient access to I-85 Industrial corridor
- High Exposure location
- Across from Toyota US and Ingles Supermarket
- Dual road frontage on Hwy 441 and South Elm Street
- Utilities available
- Centrally located between Atlanta, Greenville, Athens and Gainesville
- Less than five minutes from SK Battery and over 8 million SF of industrial development

Get more information

Will White

Senior Vice President

D 770 532 9911

will.white@avisonyoung.com

Parcel Overview

13.08 Acres Hwy 441 and South Elm Street



**AVISON
YOUNG**

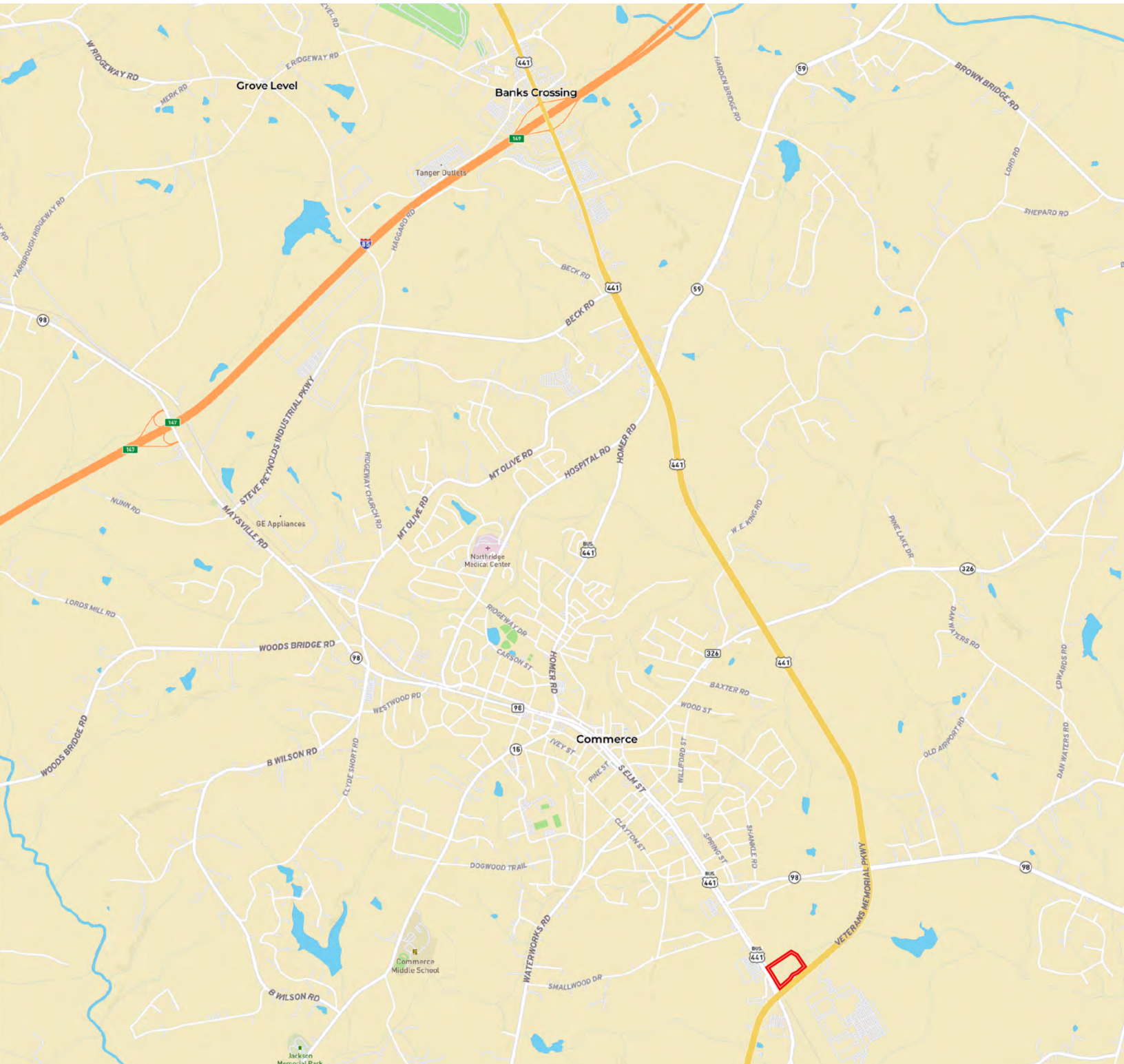
Will White
Senior Vice President
D 770 532 9911
will.white@avisonyoung.com

Avison Young - Gainesville | 425 Spring Street SE, Suite 200 | Gainesville, GA 30501

© 2023. Avison Young - Gainesville. Information contained herein was obtained from sources deemed reliable and, while thought to be correct, have not been verified. Avison Young - Gainesville does not guarantee the accuracy or completeness of the information presented, nor assumes any responsibility or liability for any errors or omissions therein.

Parcel Map

13.08 Acres Hwy 441 and South Elm Street



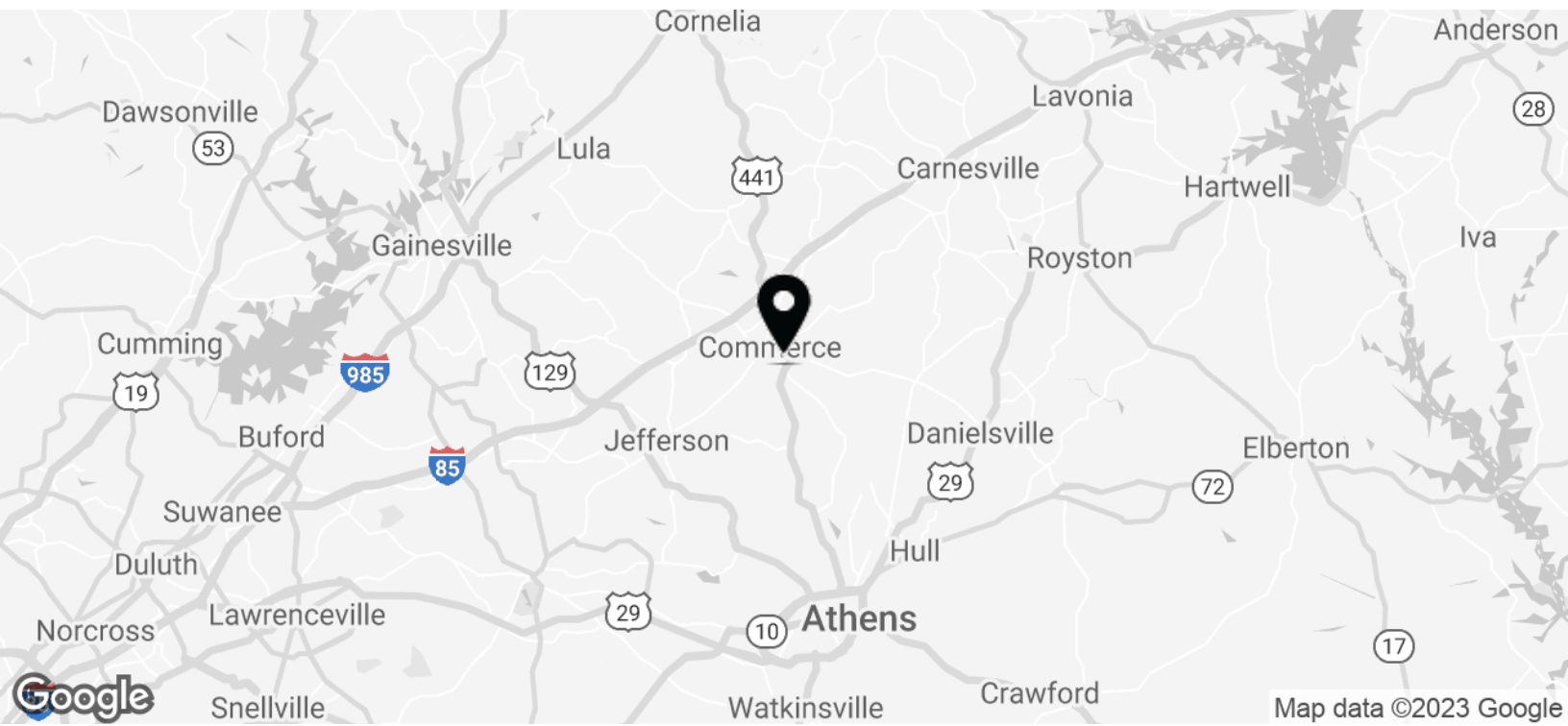
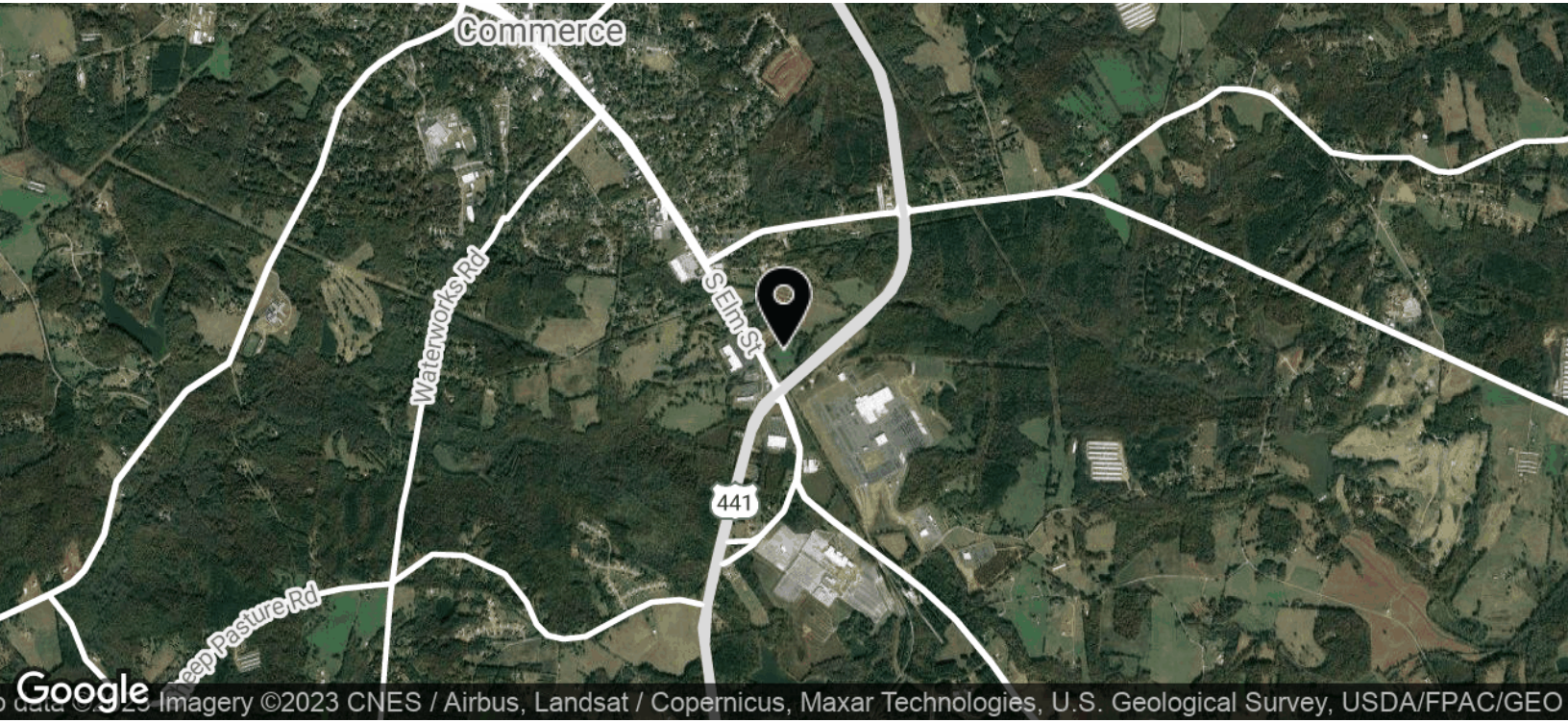
Will White
Senior Vice President
D 770 532 9911
will.white@avisonyoung.com

Avison Young - Gainesville | 425 Spring Street SE, Suite 200 | Gainesville, GA 30501

© 2023. Avison Young - Gainesville. Information contained herein was obtained from sources deemed reliable and, while thought to be correct, have not been verified. Avison Young - Gainesville does not guarantee the accuracy or completeness of the information presented, nor assumes any responsibility or liability for any errors or omissions therein.

Location Map

13.08 Acres Hwy 441 and South Elm Street



Will White
Senior Vice President
D 770 532 9911
will.white@avisonyoung.com

Avison Young - Gainesville | 425 Spring Street SE, Suite 200 | Gainesville, GA 30501

© 2023, Avison Young - Gainesville. Information contained herein was obtained from sources deemed reliable and, while thought to be correct, have not been verified. Avison Young - Gainesville does not guarantee the accuracy or completeness of the information presented, nor assumes any responsibility or liability for any errors or omissions therein.

Aerial Photos

13.08 Acres Hwy 441 and South Elm Street



**AVISON
YOUNG**

Will White
Senior Vice President
D 770 532 9911
will.white@avisonyoung.com

Avison Young - Gainesville | 425 Spring Street SE, Suite 200 | Gainesville, GA 30501

© 2023. Avison Young - Gainesville. Information contained herein was obtained from sources deemed reliable and, while thought to be correct, have not been verified. Avison Young - Gainesville does not guarantee the accuracy or completeness of the information presented, nor assumes any responsibility or liability for any errors or omissions therein.

Will White

Senior Vice President

D 770 532 9911

will.white@avisonyoung.com



Let's talk.

Avison Young - Gainesville
425 Spring Street SE, Suite 200 | Gainesville, GA 30501

© 2023. Avison Young - Gainesville. Information contained herein was obtained from sources deemed reliable and, while thought to be correct, have not been verified. Avison Young - Gainesville does not guarantee the accuracy or completeness of the information presented, nor assumes any responsibility or liability for any errors or omissions therein.

**AVISON
YOUNG**
