

FOR LEASE

PORT OF NEVADA

17127 INLAND PORT DR.



Industrial
PRODUCT TYPE



±5 - 80 AC
SIZE



Fernley
LOCATION



Brian Armon, SIOR, CCIM
Sr. Vice President | Principal
(775) 772 0957
barmon@naialliance.com
NRED N°: BS.23801



Tony Machabee
Sr. Associate
(775) 848 1594
tmachabee@naialliance.com
NRED N°: S.188595



Derek Carroll
Associate
(775) 336 4644
dcarroll@naialliance.com
NRED N°: BS.0145531





Industrial
PRODUCT TYPE



±5 - 80 AC
SIZE



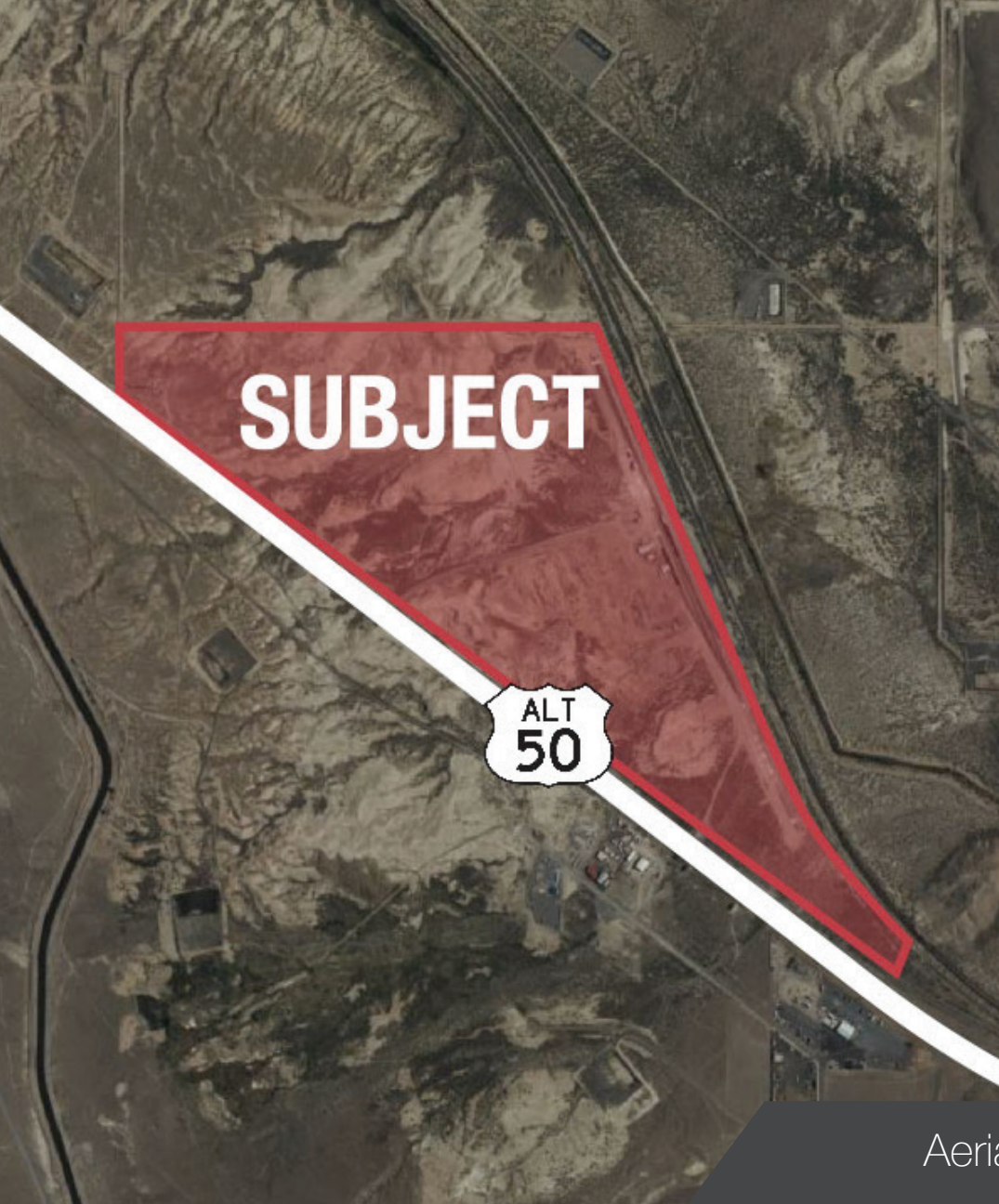
Negotiable
RATE



Rail Served
FEATURES



Unit Photos



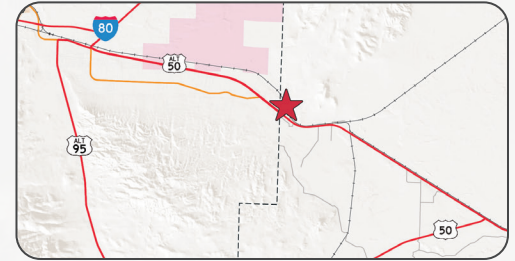
SUBJECT

**ALT
50**

FOR LEASE

PORT OF NEVADA

17127 INLAND PORT DR.



Property Highlights

The Western Nevada Commerce Center is located on U.S. Highway 50 and is dual-served by the Union Pacific Railroad and BNSF. The Center provides both rail served, and non-rail served sites. Just a short drive to Interstate 80 and easy connections to U.S. Highway 95, the Commerce Center is uniquely positioned to reach major western markets. The Center provides one of the few options for industrial rail users and one of the few proposed transload facilities in northern Nevada.

Property Details


Address	17127 Inland Port Dr. Fernley, NV 89408
Available AC	±5 - 80 AC
Lease Rate	Negotiable
OPEX	TBD
APN	TBD
Zoning	TBD

Aerial Map + Property Highlights


Industrial
PRODUCT TYPE

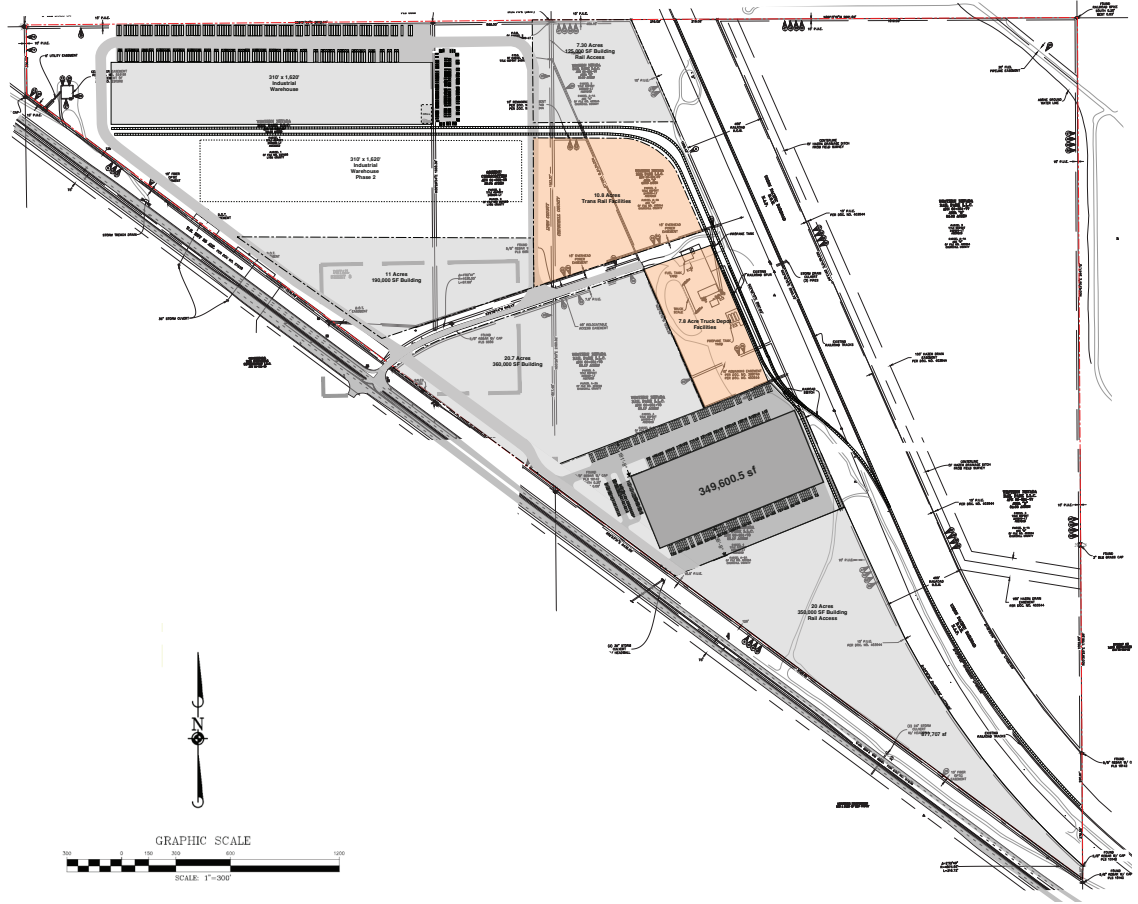

±5 - 80 AC
SIZE


Negotiable
RATE


Rail Served
FEATURES

Class 1 Rail Service Dual Rail-Served Facility By Union Pacific And Bnsf

- Direct access to U.S. Highway 50 and connections to Interstate 80 (5-minute drive) and U.S. 95
- Existing siding available, approximately 3k linear feet of rail on two tracks with 3 miles of additional on-site track planned for 2021
- Truck Scales on site
- Intermodal and transload facility and storage yard
- Located just outside Fernley Nevada east of the Reno/Sparks Metro area
- Zoned Industrial
- A portion of the Center is in a designated Opportunity Zone
- Build to suit opportunities available



FOR LEASE

PORT OF NEVADA

17127 INLAND PORT DR.

80


ALT
50

Union Pacific Mainline Railroad

SUBJECT

50

DISTANCE FROM SUBJECT


NEAREST  ON-RAMP	9 MI 13 MIN DRIVE
RENO	46 MI 50 MIN DRIVE
SAN FRANCISCO	261 MI 4.5 HR DRIVE
LOS ANGELES	486 MI 7.7 HR DRIVE





Aerial Map

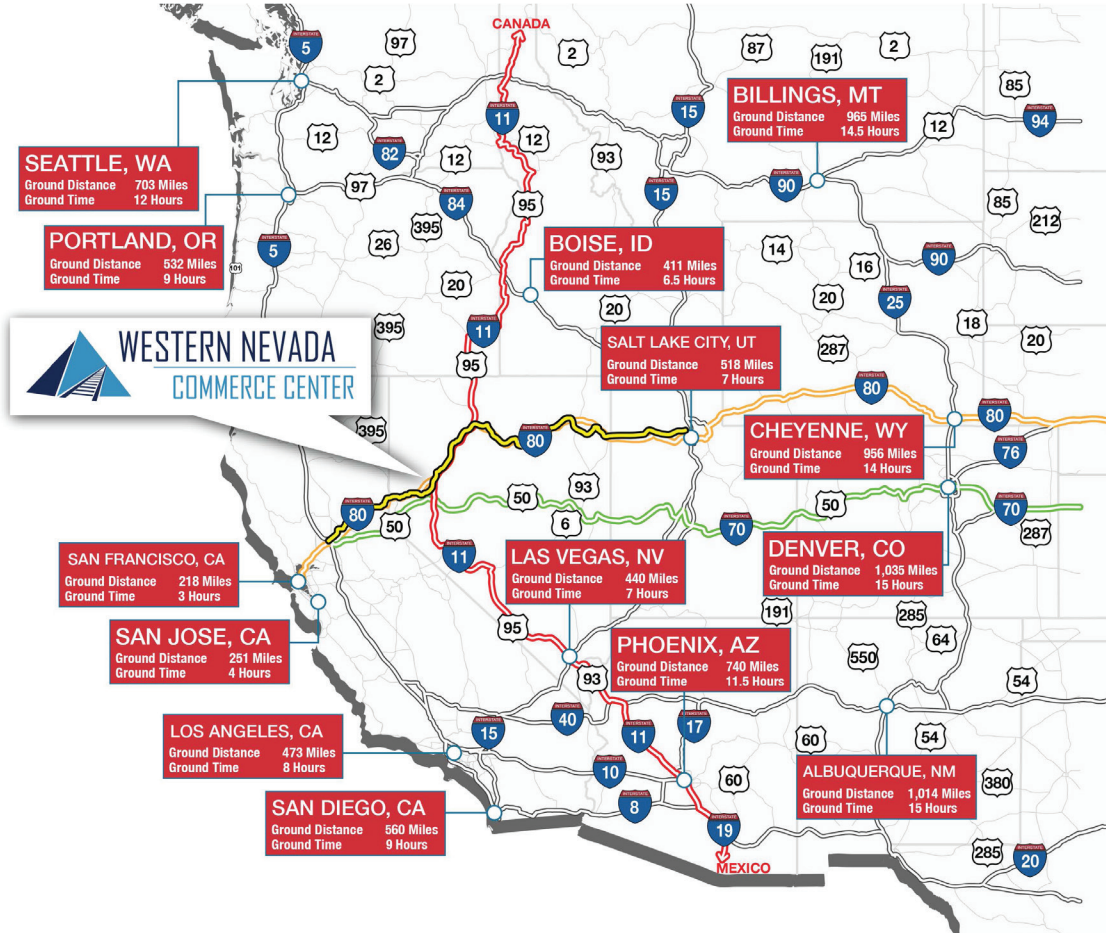

Industrial
PRODUCT TYPE


±5 - 80 AC
SIZE

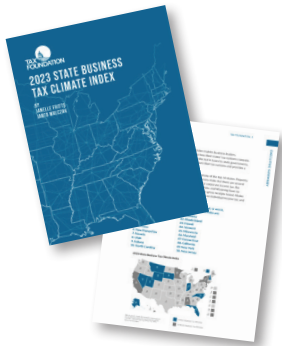

Negotiable
RATE


Rail Served
FEATURES

-  Interstate 80 -Terminates in New York.
(Transcontinental Interstate)
-  Highway 50 turns into Interstate 70 Terminates in Baltimore, MD
(Transcontinental Interstate)
-  Future Interstate 11
-Transcontinental Highway
Canada to Mexico.
-  Union Pacific/BNSF Railroad











Nevada is a business-friendly state with a very low-regulation environment, a streamlined licensing and approval processes, and a favorable tax environment for business and industry. A state with the workforce, education, and infrastructure in place to support economic development.



THE BEST IN THE WEST

The Tax Foundation's 2023 State Business Tax Climate Index named Nevada the 7th best in the country. The Index looks at five areas of taxation including corporate tax, individual income tax, sales tax, unemployment insurance tax, and property tax. It is designed to show how well states structure their tax systems and provides a road map for improvement.

No Tax on

-  Corporate Income Tax
-  Corporate Shares Tax
-  Franchise Tax
-  Personal Income Tax
-  Franchise Tax on Income
-  Inheritance or Gift Tax
-  Unitary Tax
-  Estate Tax

Tax Abatement on

-  Sales & Use Tax
-  Modified Business Tax
-  Personal Property Tax
-  Real Property Tax (for Recycling)
-  Aviation Parts Tax
-  Data Center Tax



61 OPPORTUNITY ZONE DESIGNATIONS

In June 2018, 61 of Nevada's low-income census tracts received official designation as Qualified Opportunity Zones (QOZ) by the U.S. Department of Treasury and the IRS. The tax incentives reduce taxes on realized capital gains that are quickly reinvested into these designated census tracts by providing three benefits:

-  The deferral of taxes
-  A reduction in taxes by 10 to 15 percent
-  The exclusion of capital gains tax on appreciation if held for 10 years

Sources: 2022 State Business Tax Climate Index provided by the Tax Foundation
Tax + Opportunity Zone incentive details provided by the Nevada Governor's Office of Economic Development

FOR LEASE

PORT OF NEVADA

17127 INLAND PORT DR.



Brian Armon, SIOB, CCIM
Sr. Vice President | Principal
(775) 772 0957
barmon@naialliance.com
NRED N°: BS.23801



Tony Machabee
Sr. Associate
(775) 848 1594
tmachabee@naialliance.com
NRED N°: S.188595



Derek Carroll
Associate
(775) 336 4644
dcarroll@naialliance.com
NRED N°: BS.0145531

NO WARRANTY OR REPRESENTATION, EXPRESS OR IMPLIED, IS MADE AS TO THE ACCURACY OF THE INFORMATION CONTAINED HEREIN, AND THE SAME IS SUBMITTED SUBJECT TO ERRORS, OMISSIONS, CHANGE OF PRICE, RENTAL OR OTHER CONDITIONS, PRIOR SALE, LEASE OR FINANCING, OR WITHDRAWAL WITHOUT NOTICE, AND OF ANY SPECIAL LISTING CONDITIONS IMPOSED BY OUR PRINCIPALS NO WARRANTIES OR REPRESENTATIONS ARE MADE AS TO THE CONDITION OF THE PROPERTY OR ANY HAZARDS CONTAINED THEREIN ARE ANY TO BE IMPLIED.

