

# 6520 E 82nd Street

Indianapolis, IN 46250

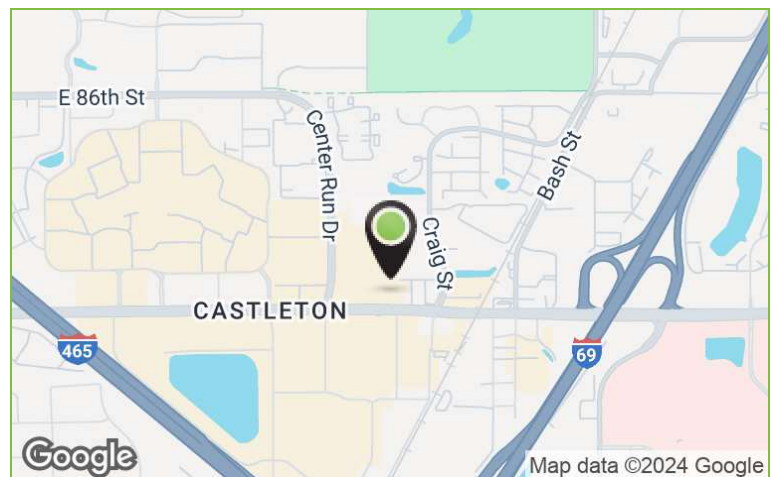


## Retail/Office

850 - 1,088 SF

### PROPERTY OVERVIEW

- Suite 175: 850 SF Retail/Office
- Suite 165: 1,088 SF Office
- Located at signalized intersection
- Easy access to I-69
- Prominent visibility on 82nd Street
- Surrounded by area restaurants and retailers
- Ample Parking



DEMOGRAPHICS	1 MILE	3 MILES	5 MILES
Total Households	3,379	26,985	67,085
Total Population	6,854	58,988	154,620
Average HH Income	\$57,048	\$78,763	\$83,195

**Mike Short**  
Vice President  
Mike@alopg.com  
C: 317.800.4664

ALO Property Group  
9075 N. Meridian St., Ste. 175  
Indianapolis, IN 46260  
O: 317.853.7500  
www.alopg.com



# 6520 E 82nd Street

Indianapolis, IN 46250

Suite 175 - 850 SF



**Mike Short**  
Vice President  
Mike@alopg.com  
C: 317.800.4664

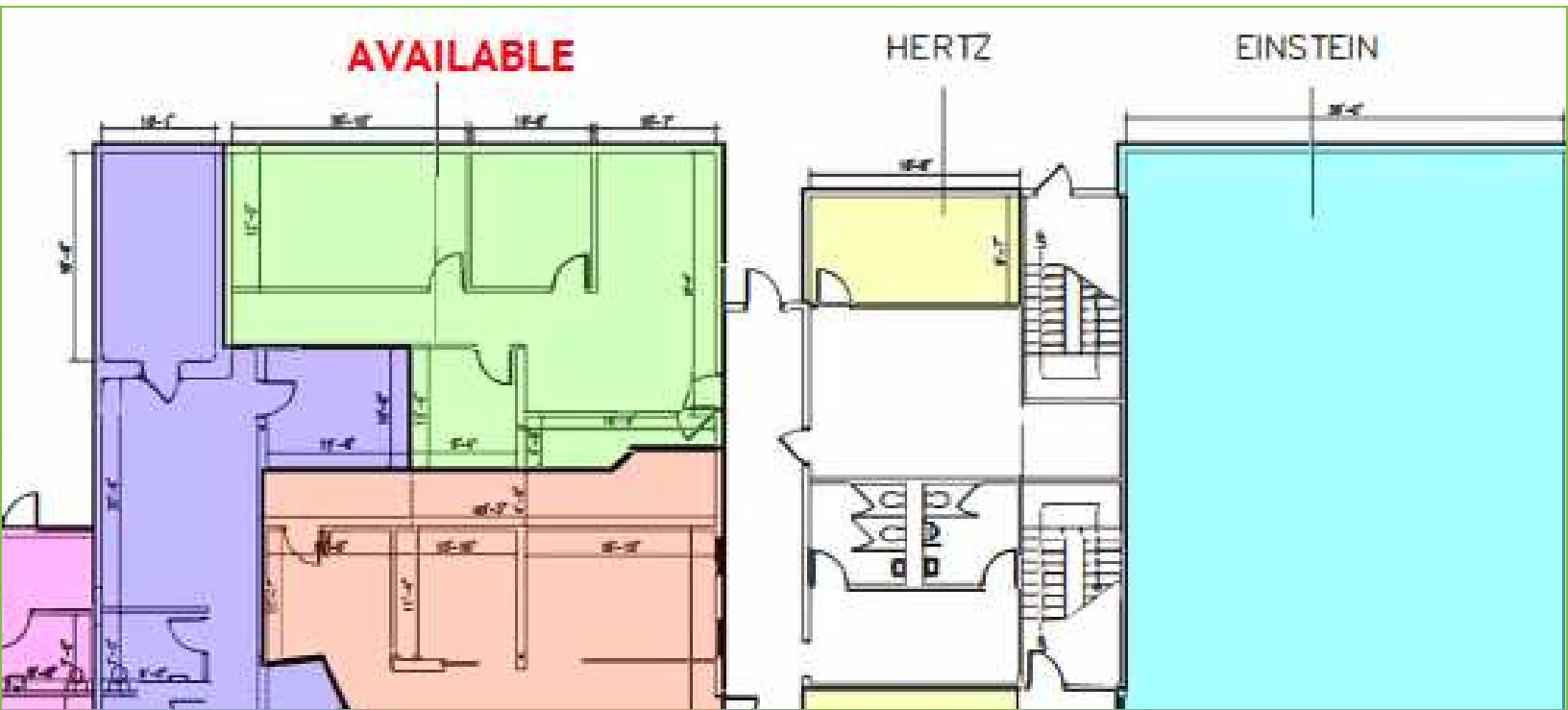
ALO Property Group  
9075 N. Meridian St., Ste. 175  
Indianapolis, IN 46260  
O: 317.853.7500  
www.alopg.com



# 6520 E 82nd Street

Indianapolis, IN 46250

Suite 165 - 1,088 SF



**Mike Short**  
Vice President  
Mike@alopg.com  
C: 317.800.4664

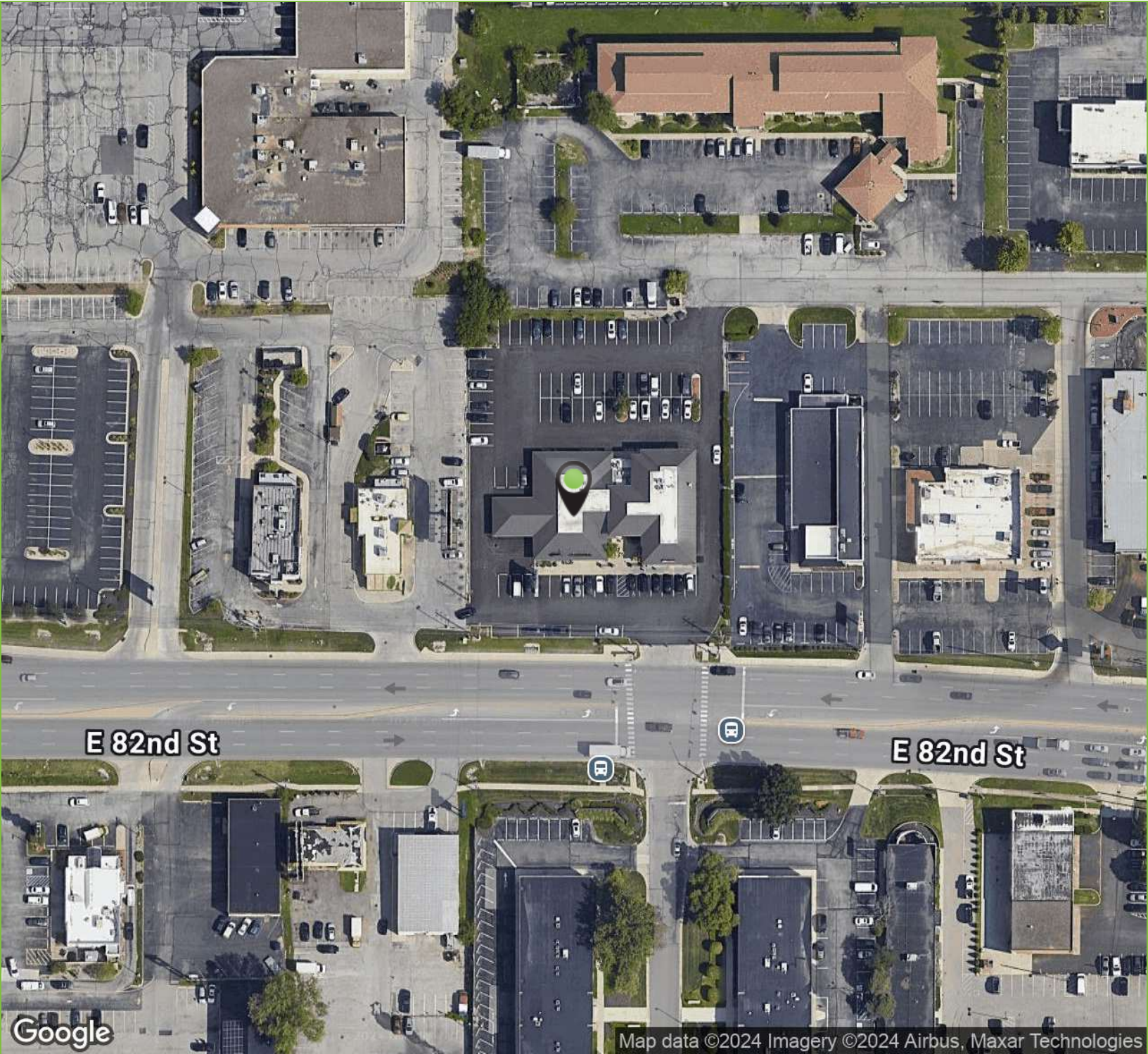
ALO Property Group  
9075 N. Meridian St., Ste. 175  
Indianapolis, IN 46260  
O: 317.853.7500  
www.alopg.com



# 6520 E 82nd Street

Indianapolis, IN 46250

Aerial Map



Map data ©2024 Imagery ©2024 Airbus, Maxar Technologies

**Mike Short**  
Vice President  
Mike@alopg.com  
C: 317.800.4664

ALO Property Group  
9075 N. Meridian St., Ste. 175  
Indianapolis, IN 46260  
O: 317.853.7500  
www.alopg.com



Although all information furnished regarding property for sale, rental, or financing is from sources deemed as reliable, such information has not been verified and no express representation is made nor is any to be implied as to the accuracy thereof and it is submitted subject to errors, omissions, change of price, rental or other conditions, prior to sale, lease or financing, or withdrawal without notice and to any special conditions imposed by our principal.