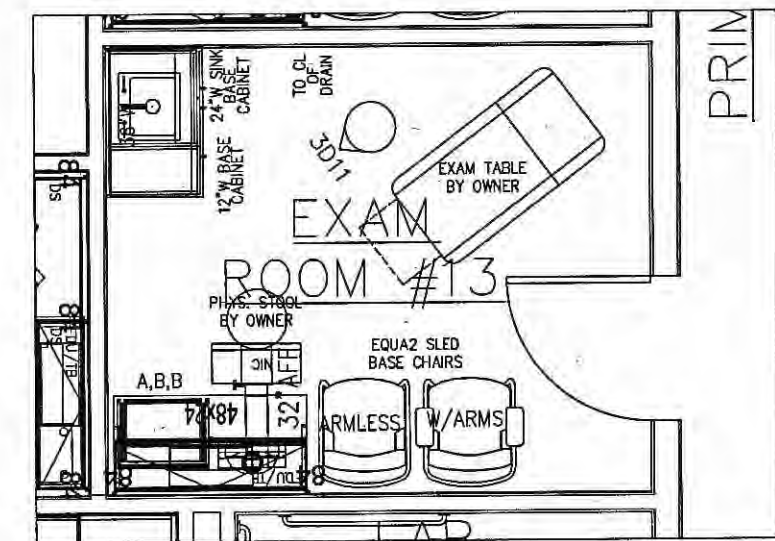
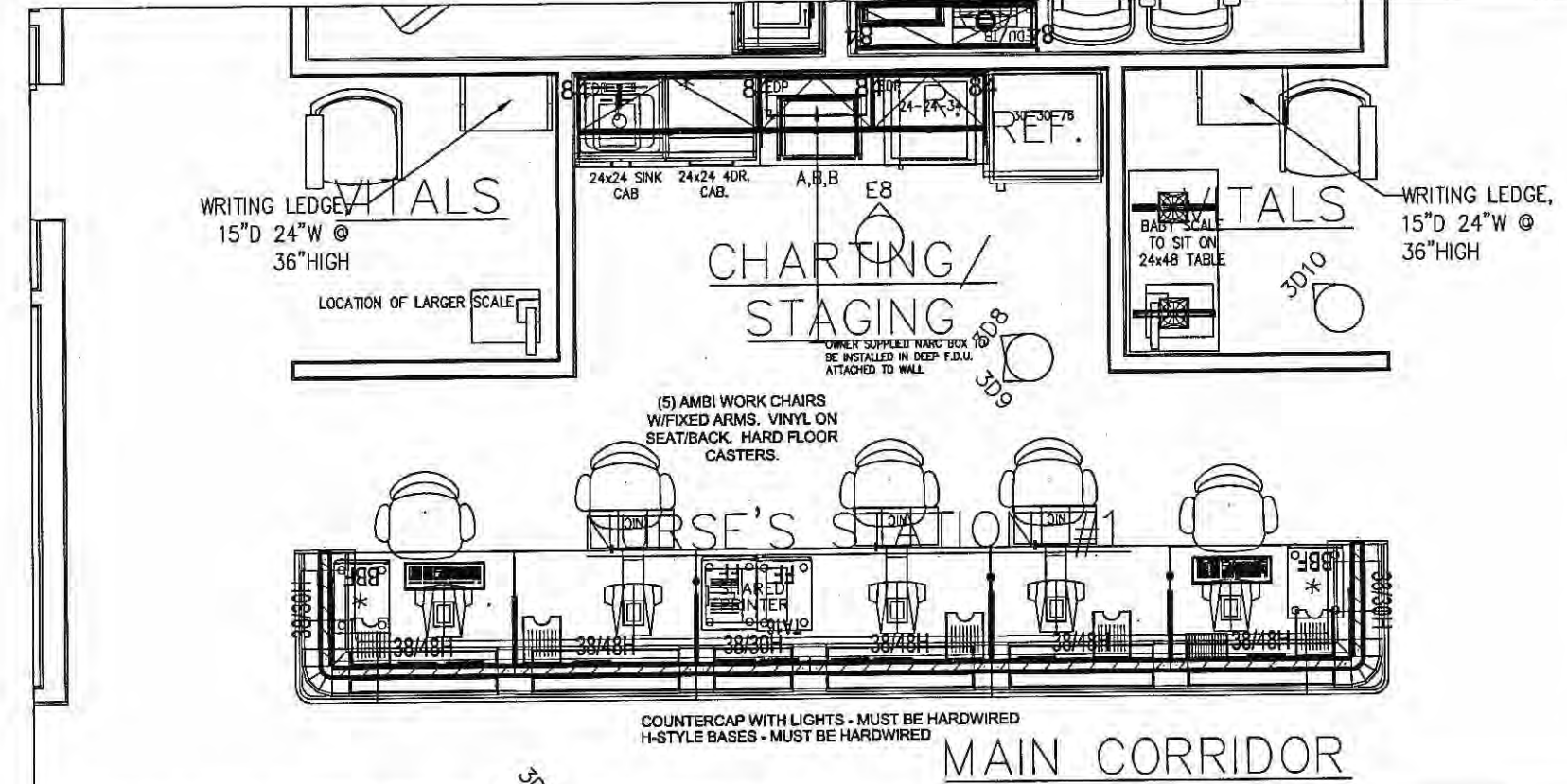


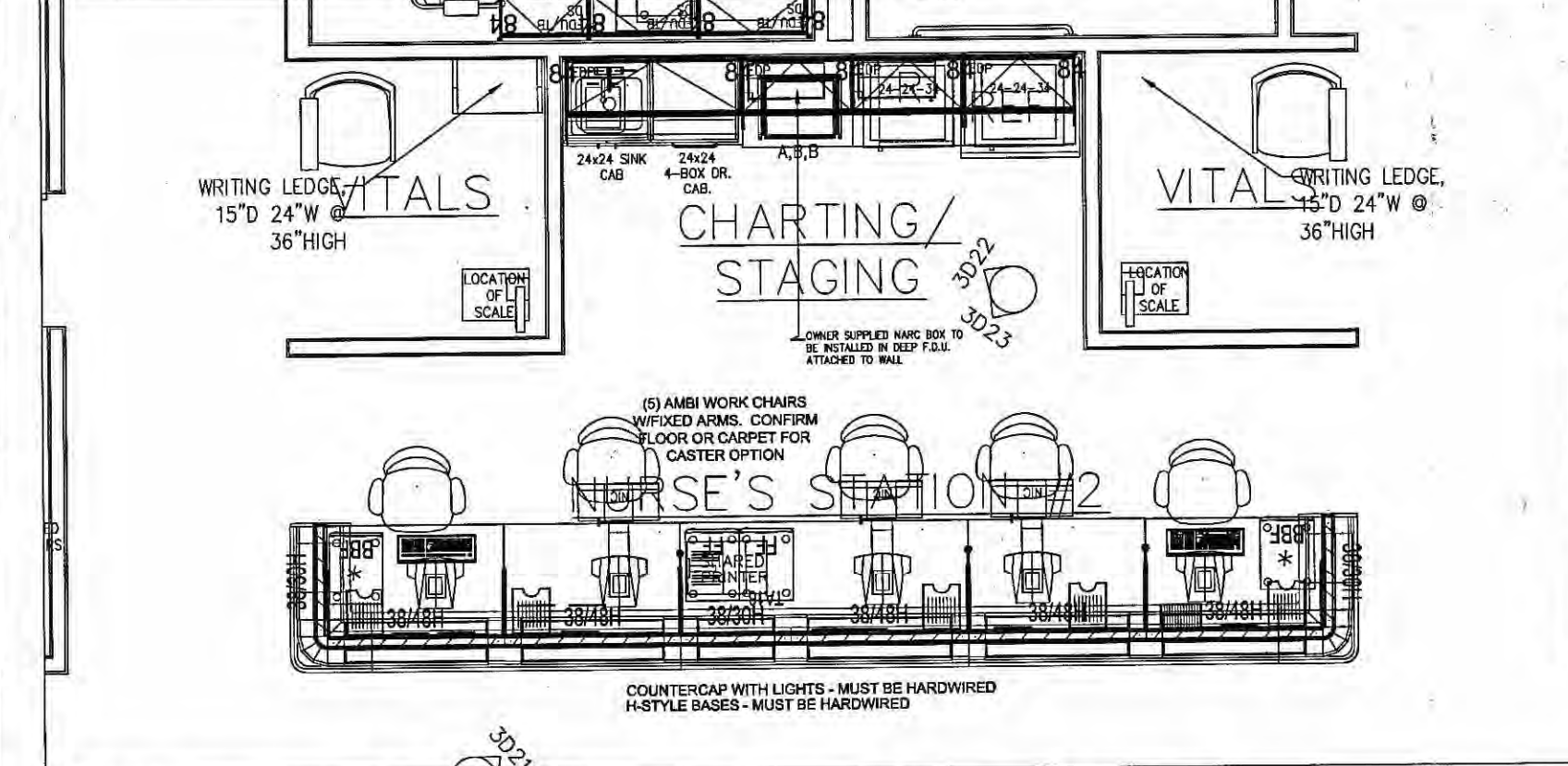
OPS MGR & SECY SCALE - 1/4"=1'-0"



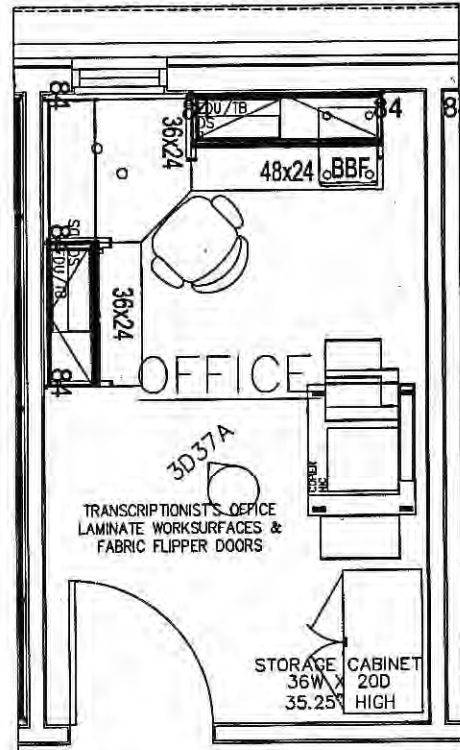
EXAM TYPICAL SCALE - 1/4"=1'-0"



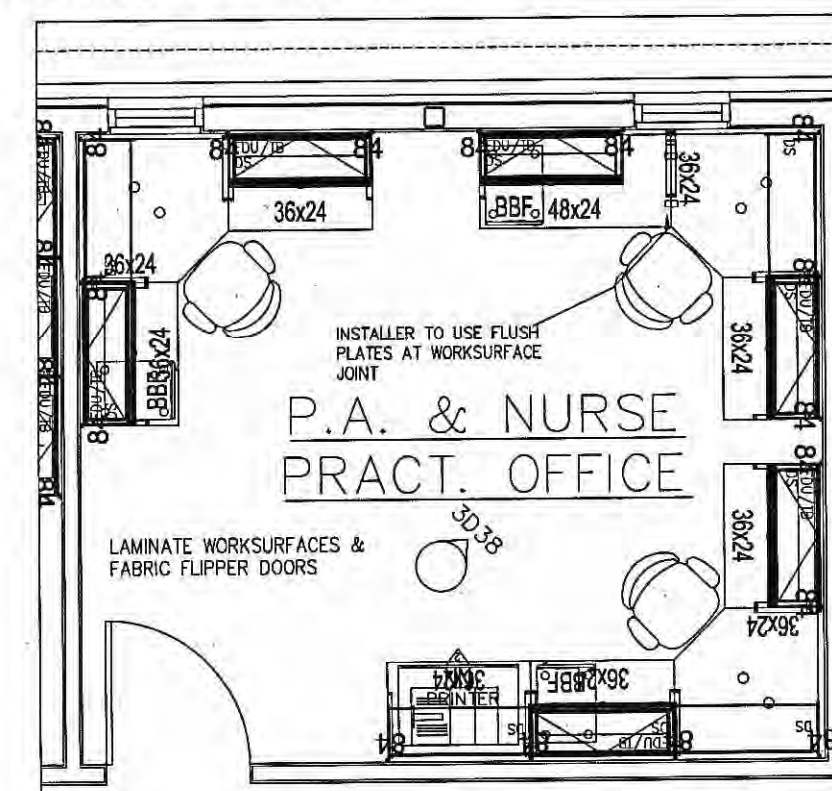
NURSE STATION #1 SCALE - 1/4"=1'-0"



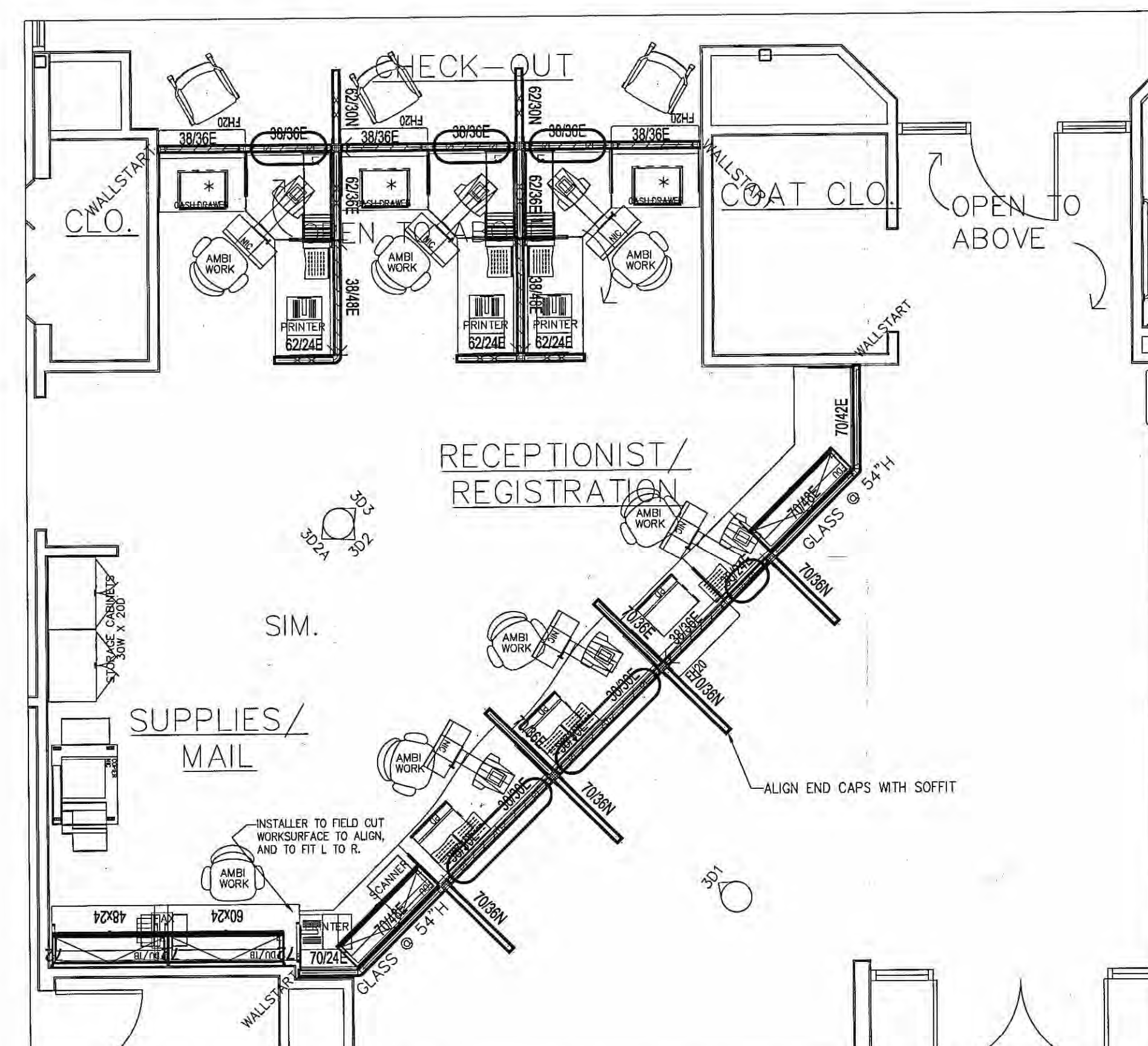
NURSE STATION #2 SCALE - 1/4"=1'-0"



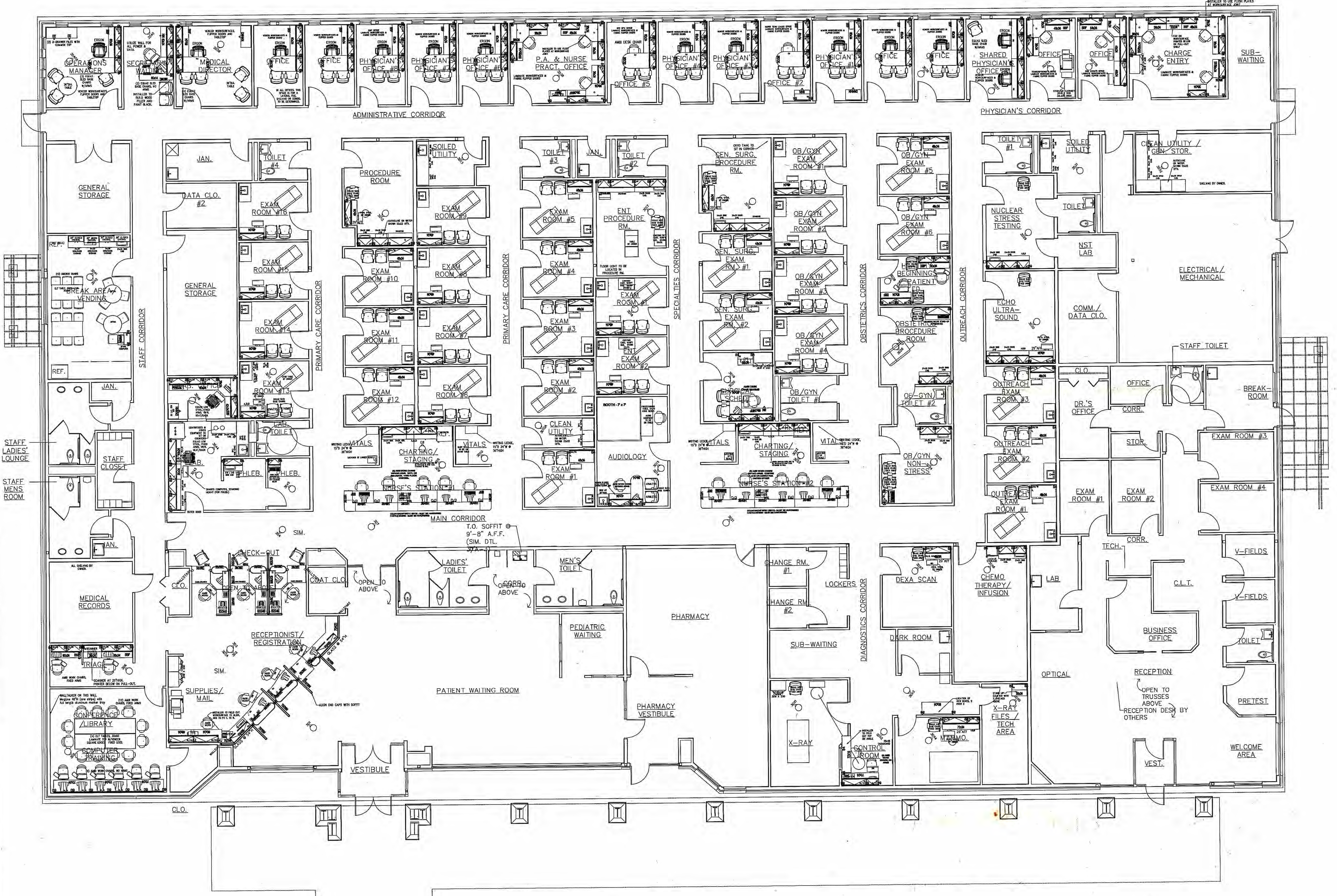
PHYSICIAN OFFICE TYPICAL SCALE - 1/4"=1'-0"



P.A. & NURSE PRACT. OFFICE SCALE - 1/4"=1'-0"



RECEPTION/CHECK-OU SCALE - 1/4"=1'-0"



SCALE - 1/8"=1'-0"

3/23/06: REVISION TO RECEPTION (301 AND 302) AND STAFF LOUNGE (3041) TO ADDRESS ADA COMPLIANCE.  
 PROJECT Geisinger Wyoming County Clinic  
 Medical Facilities Group  
 A Division of SUPPLYSOURCE INC.  
 Office Interior Solutions  
 2625 Fresh Pond  
 Williamsport, PA 17701  
 Phone 570-327-1500 Fax 570-327-1244  
 PROJECT NUMBER 05SKM025 SHEET PL1  
 DRAWN BY S.M. CHECKED BY SCALE See Above DATE 02-25-05  
 This drawing is the property of SupplySource, Inc. and shall remain the property of SupplySource, Inc. It shall be used only for the specific project for which it has been prepared. Without the prior written consent of SupplySource, Inc., it shall not be copied, altered, or used in connection with any work or project other than the specific project for which it has been prepared. Field verifications must be verified prior to installation.  
 REVISION FINAL 11/17/05, 3/23/06