



maven  
RETAIL

SERIF

# 950 MARKET STREET

RETAIL OPPORTUNITY | SAN FRANCISCO, CA





# SERIF

The Serif is a transformative project located on a commanding corner on San Francisco's iconic Market Street corridor. The available space consists of 6,000 SF and is complimented with 242 residential condominiums, the 250-room LINE Hotel, and a dedicated non-profit space. Combined with ample outdoor, publicly accessible open areas, this community-oriented development will enliven the neighborhood, activate the public realm, and provide gathering and employment opportunities for the community.

The striking 12-story building is the result of a collaboration between conceptual architect Bjarke Ingels Group of Denmark, interior architect IwamotoScott of San Francisco, and architect of record Handel Architects of San Francisco. The result is unlike anything in The City—in form, in color, in style. The bright white, textured facade takes cues from contemporary architecture, while the flatiron at Market and Turk Streets recalls early 20th century San Francisco. Also noteworthy is the variety of window shapes and sizes, connecting the building's interior with the surrounding area.

## AVAILABLE

RETAIL OPPORTUNITY: 6,000 SF

AVAILABLE LOWER LEVEL

STORAGE: 2,000 SF

DEVELOPER | Group I

ARCHITECTS | Bjarke Ingels Group, Handel Architects, and BAR Architects

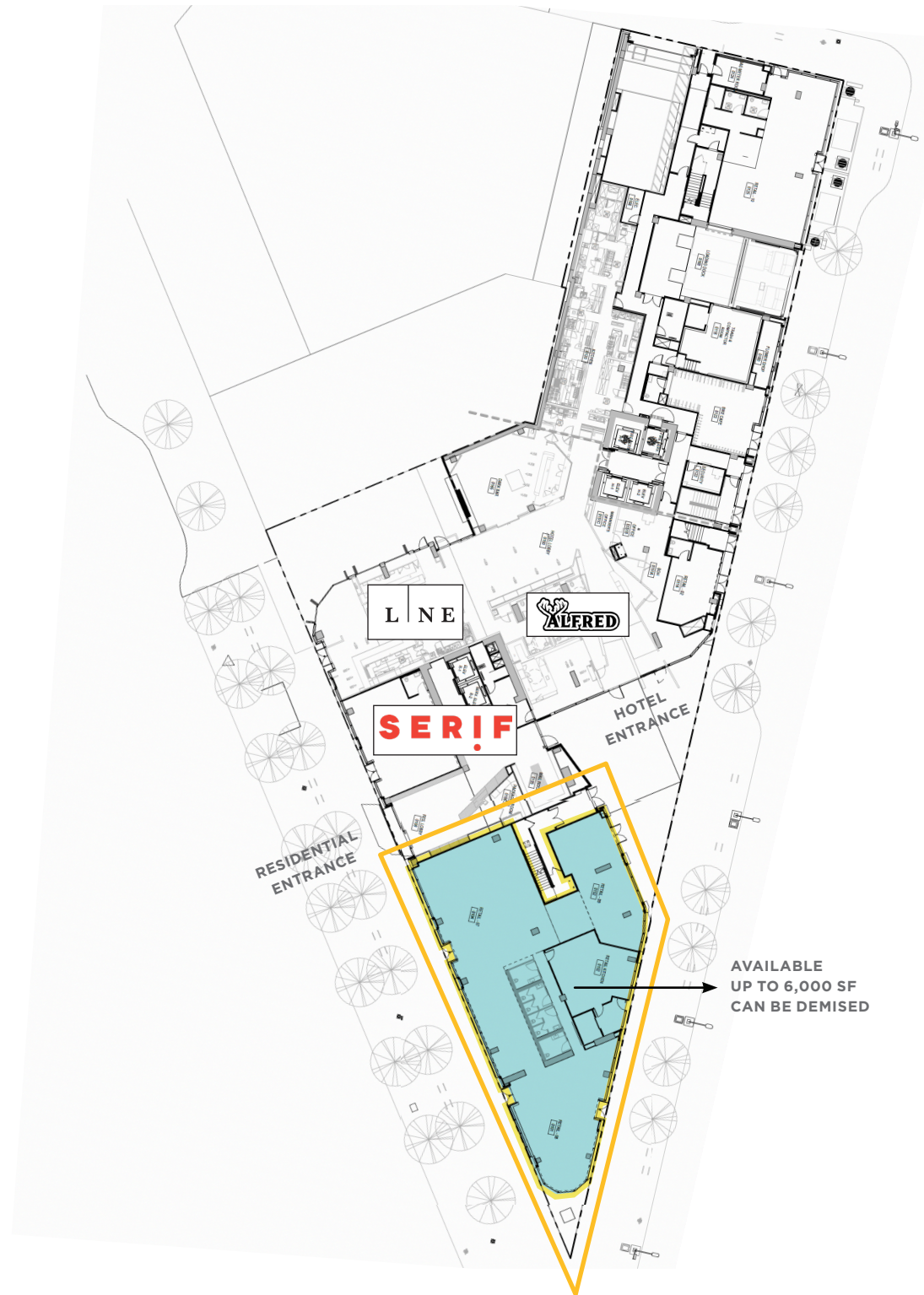
LANDSCAPE ARCHITECT | Surfacedesign

UNIT COUNT | 242 Condos; 236 Hotel Keys

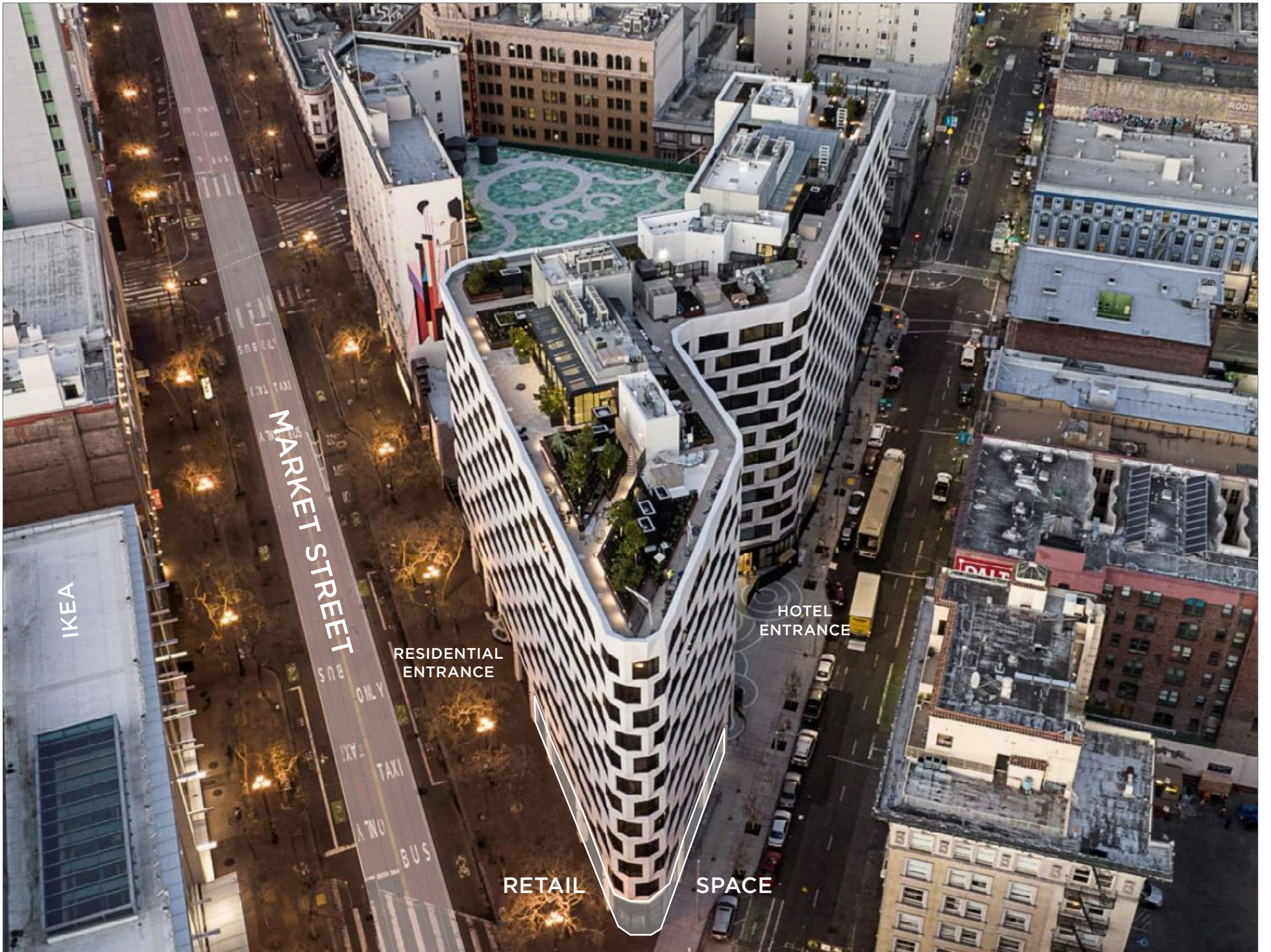


## FEATURES

- Up to 6,000 square feet available (can be demised)
- Seeking “the next” retailers
- Landlord will consider warm shell delivery
- Anchor by 242 condominiums and the 236-room Line Hotel, part of the MCG/ Soho House family
- Over 200 linear feet of street frontage
- Huge windows and ceilings
- Flexible floor plan can accommodate one or several concepts
- Restaurant-ready space / Type I Hood with 5,000 CFM duct







IKEA

MARKET STREET

RESIDENTIAL  
ENTRANCE

HOTEL  
ENTRANCE

RETAIL

SPACE





THE WARFIELD THEATER



BAIT



BLICK ARTS MATERIALS



GOLDEN GATE THEATER



SUPREME



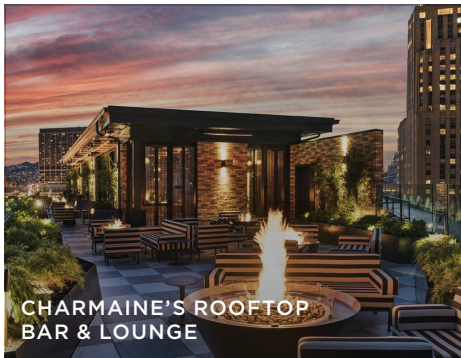
DAVID RIO CHAI BAR



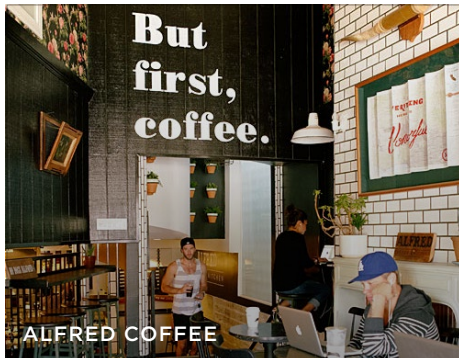
MONTESACRO



VILLON



CHARMAINE'S ROOFTOP BAR & LOUNGE



ALFRED COFFEE



ADIDAS



INTERNATIONAL ART MUSEUM

## MID-MARKET

950 Market is located in the Mid-Market district of San Francisco. The building is occupying the majority of a triangular block where San Francisco's Union Square, Financial District and South of Market districts meet. The 34,000 sq. ft. site shares the block with the historic Warfield Theater. San Francisco's Mid-Market neighborhood is a uniquely eclectic mix of residents, public and private-sector employers, businesses large and small, social service providers, and diverse cultural attractions. Mid-Market has emerged in the last decade as one of San Francisco's most

diverse and fast-growing neighborhoods. The street is filled with trending shops and unique boutiques, many of them longtime destinations for Bay Area shoppers and tourists. The property also enjoys the proximity to major touristic landmarks such as the Powell St. Cable Car, Chinatown, and Union Square, as well as a multitude of nearby hotels and boarding accommodations. Several parking garages and public transportation are located nearby.





MARKET STREET BRANDS - JOIN THEM!

URBAN OUTFITTERS

**Supreme**

MICHAEL KORS

UN PLAZA  
SKATEPARK

**IKEA**

SEPHORA



BLUE BOTTLE  
COFFEE

**BLICK**  
art materials

**adidas**

**BAIT**

ZARA

bloomingdales

Fellow Barber



**UN PLAZA SKATEPARK**

3 BLOCKS AWAY  
10 MINUTE WALKING DISTANCE



PREPARED BY



## CONTACT

---

**CATHERINE MEUNIER**

office 415.462.7679

catherine@mavenproperties.com

DRE #01843732

**HALEY KLEIN**

office 415.404.7330

haley@mavenproperties.com

DRE #01907308

**SANTINO DEROSE**

office 415.404.7337

sd@mavenproperties.com

DRE #01338326

NOTICE: This information has been secured from sources we believe to be reliable but we make no representations, warranties, express or implied, as to the accuracy of the information. Listing broker has been given enough information to provide only a preliminary interest in the property. The materials are not to be considered fact. The information contained herein is not a substitute for thorough due diligence investigation. References to square footage, zoning, use, or age are approximate. Please contact the San Francisco Planning Department to verify zoning at (415) 558-6378, as neither broker or landlord represent that this space is suitable for your use. Tenant or Buyer must verify the information at their own expense and bears all the risk for any inaccuracies. By receiving these materials you are agreeing to the disclaimers set forth herein. DRE#01878802

---

466 Green Street Suite #203 | San Francisco, CA 94133 | 415-781-7700 | [www.mavenproperties.com](http://www.mavenproperties.com)