

1430 KOLL CIRCLE, #101
SAN JOSE, CA

FOR SUBLEASE



Small Multi-Tenant Unit: $\pm 1,725$ SF R&D/Industrial

Property Highlights:

- Asking \$1.35 NNN/SF (+\$0.63/SF Exp)
- Sublease through 02/28/2026
- Corner Unit
- $\pm 2/3$ Drop Ceiling Office
 - One (1) Conference Room
 - Two (2) Private Offices
- $\pm 1/3$ Open Ceiling Warehouse
- One (1) Grade Level Door
- On-site Parking (2.3/1000)
- Highways 101/880 Access
- Floor Plan on Reverse
- Please call to Tour



DANNY YU

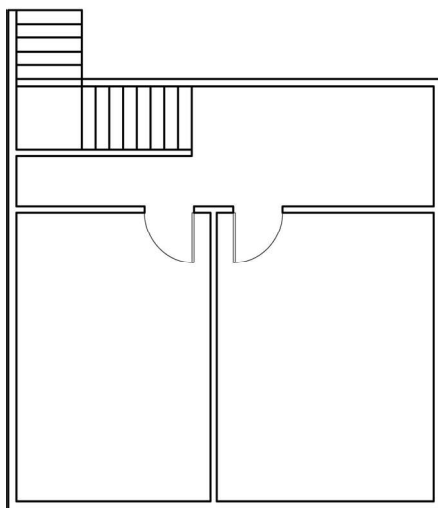
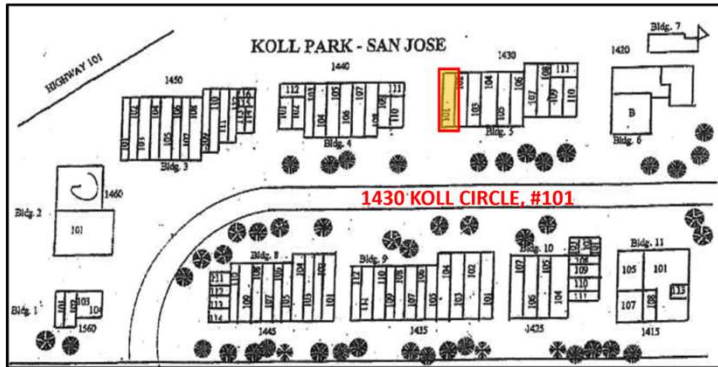
408.718.3069 | LIC #01114851 | danny.yu@svcpb.com
1330 RIDDER PARK DRIVE, SAN JOSE, CA 95131



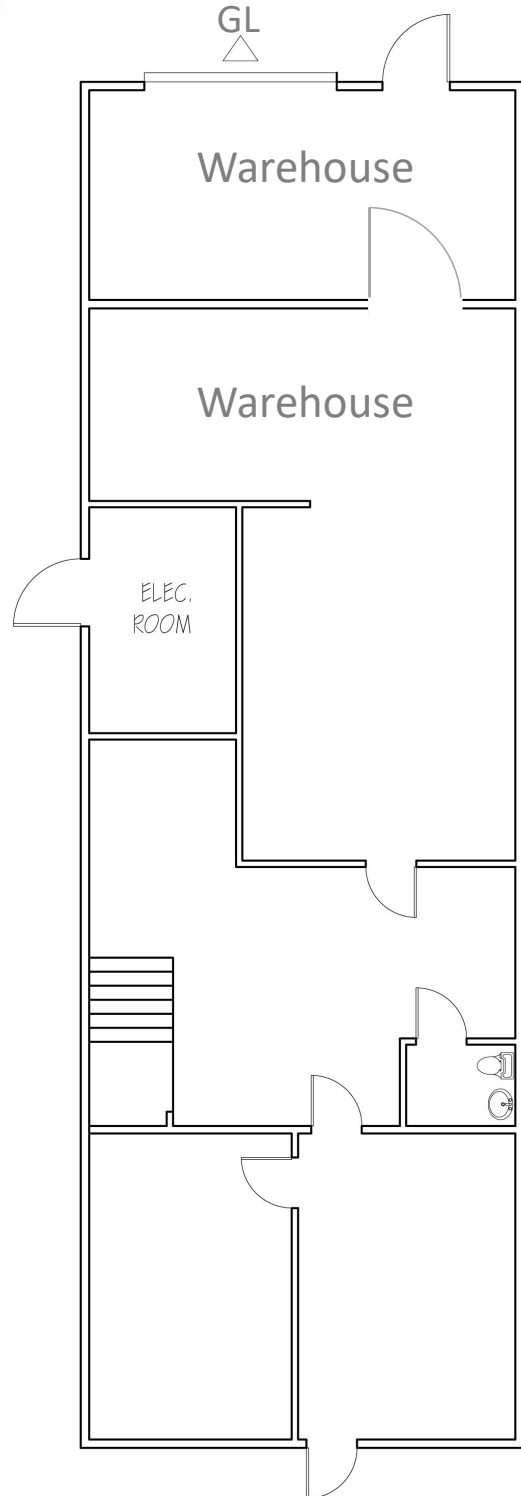
*The information contained herein is obtained through sources deemed reliable but has not been verified for accuracy or completeness and is subjected to errors, omissions and changes. We make no guarantee, warranty or representation about it. All information should be verified by the independent investigation of the recipient prior to the execution of any legal documents with regards to the purchase or lease of the Property.

1430 KOLL CIRCLE, #101
SAN JOSE, CA

FOR SUBLEASE



2nd Floor



Ground Floor

** Floorplan may not be exact or to scale.*

DANNY YU

408.718.3069 | LIC #01114851 | danny.yu@svcpb.com
1330 RIDDER PARK DRIVE, SAN JOSE, CA 95131



*The information contained herein is obtained through sources deemed reliable but has not been verified for accuracy or completeness and is subjected to errors, omissions and changes. We make no guarantee, warranty or representation about it. All information should be verified by the independent investigation of the recipient prior to the execution of any legal documents with regards to the purchase or lease of the Property.