

FOR LEASE

THE WAREHOUSE BUILDING

111 Avenue C Snohomish, WA 98290



OFFERING SUMMARY

Lease Rate:	\$23 - \$25 SF/yr (NNN)
Available SF:	1,785 SF
Lot Size:	0.09 Acres
Year Built:	1908
Renovated:	1965
Zoning:	HBD



PROPERTY OVERVIEW

Fantastic opportunity to be part of the Downtown Snohomish Business District! This demisable ground-floor space is located in the historic Warehouse Building right off of 1st Street in Downtown Snohomish.

Use can be office or retail. It is currently set up for office use, and the existing cubicles can be included and configured however best suits your office needs. For retail use, the cubicle walls can be removed leaving you open space to set up as you see fit. The building owner occupies the second floor - Rensch Engineering.

Tours by appointment only.

PROPERTY HIGHLIGHTS

- Demisable layout
- Inviting Reception Area
- Versatile Office/Storage Area
- Two Bathrooms, One is an ADA Bathroom
- Convenient Kitchenette

Heidi Ihde
(425) 478-7546
heidi@hlbirealestate.com

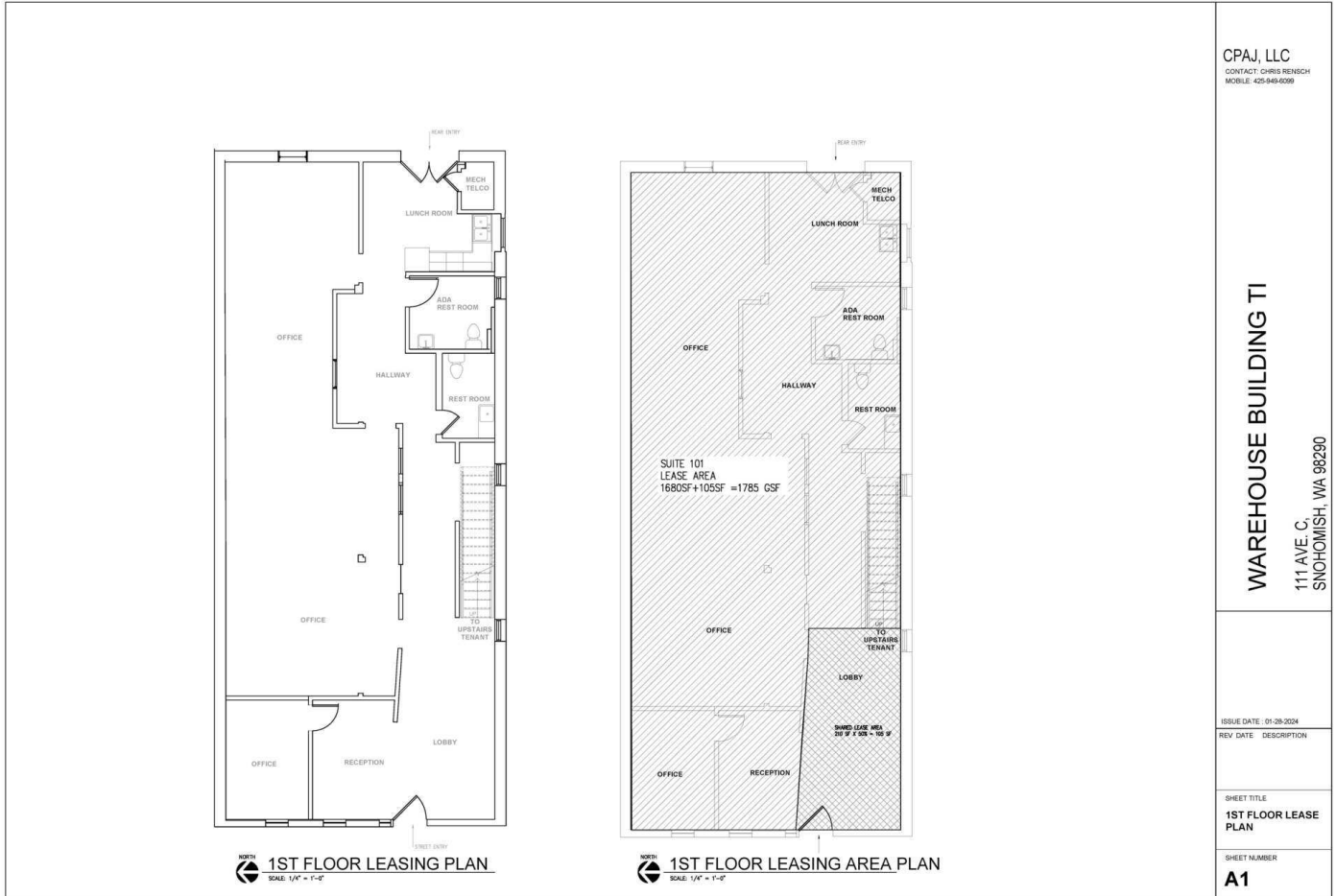


**COLDWELL BANKER
COMMERCIAL**
DANFORTH

FOR LEASE

THE WAREHOUSE BUILDING

111 Avenue C Snohomish, WA 98290



CPAJ, LLC
CONTACT: CHRIS REINICH
MOBILE: 425-649-6299

WAREHOUSE BUILDING TI
111 AVE. C,
SNOHOMISH, WA 98290

ISSUE DATE: 01-28-2024

REV DATE DESCRIPTION

SHEET TITLE
1ST FLOOR LEASE PLAN

SHEET NUMBER

A1

Heidi Ihde
(425) 478-7546
heidi@hlbirealestate.com

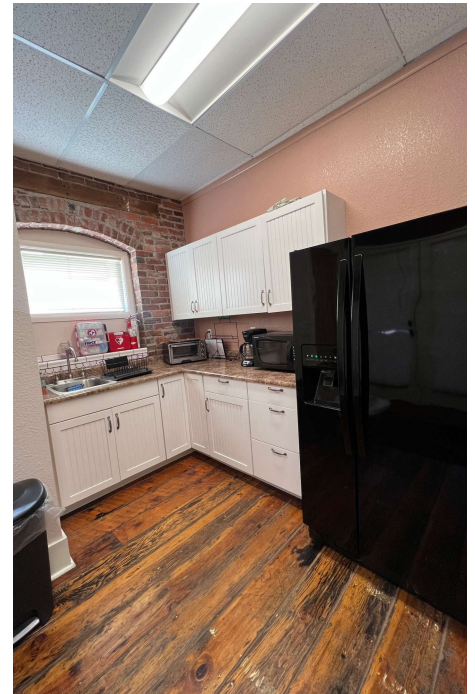
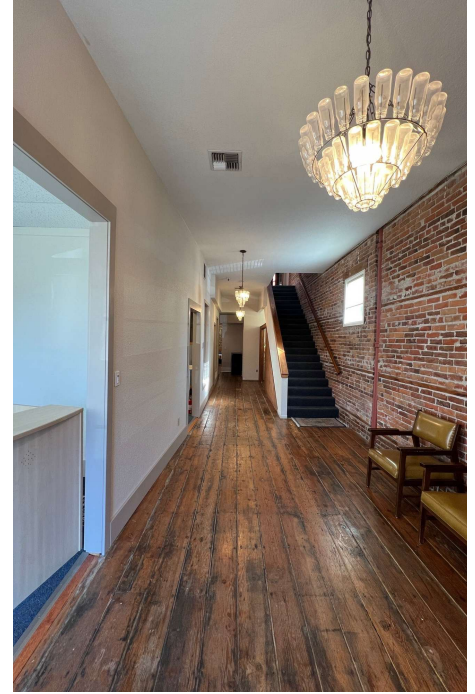


**COLDWELL BANKER
COMMERCIAL**
DANFORTH

FOR LEASE

THE WAREHOUSE BUILDING

111 Avenue C Snohomish, WA 98290



Heidi Ihde
(425) 478-7546
heidi@hlbirealestate.com

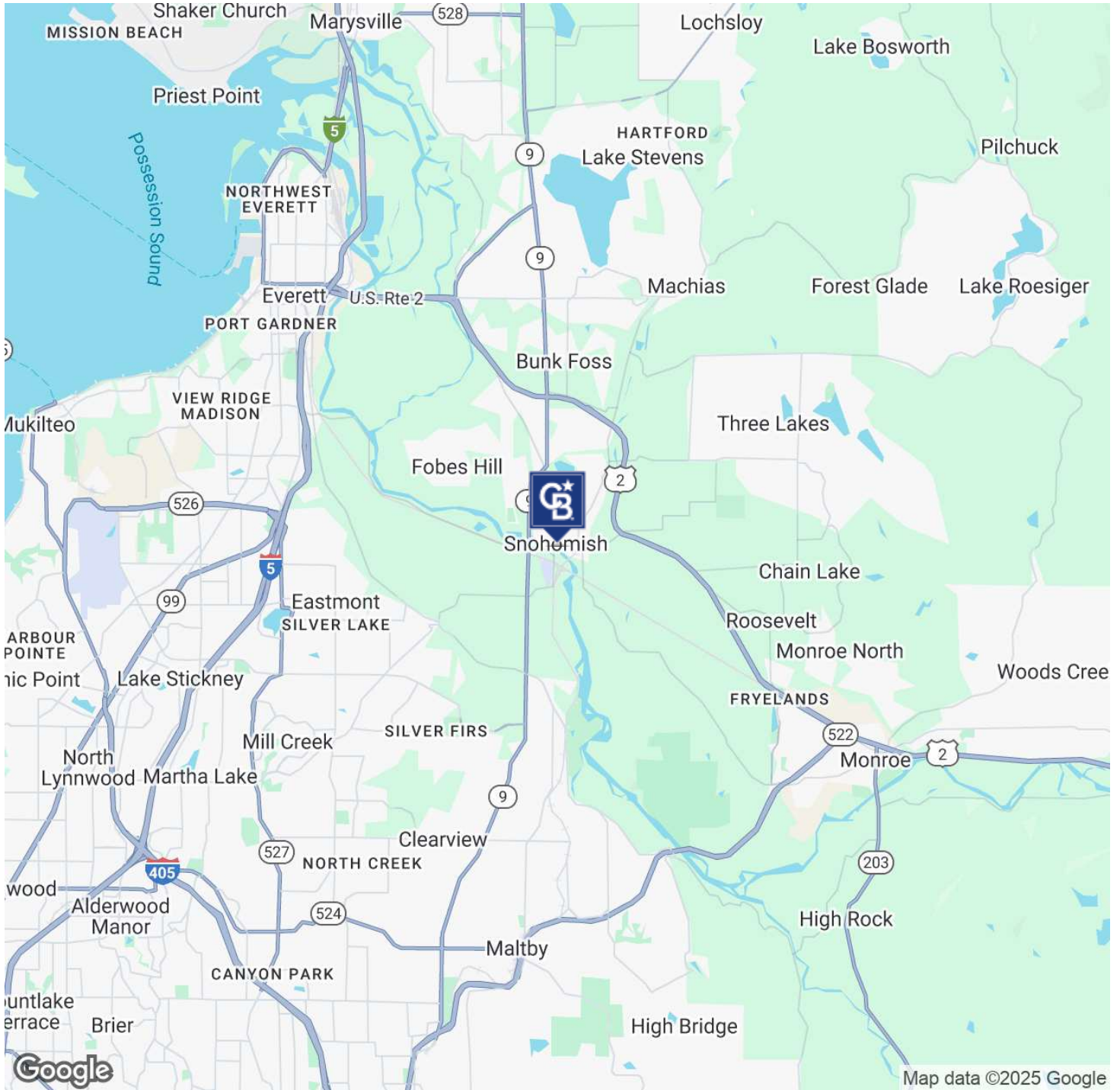


**COLDWELL BANKER
COMMERCIAL**
DANFORTH

FOR LEASE

THE WAREHOUSE BUILDING

111 Avenue C Snohomish, WA 98290



Heidi Ihde
(425) 478-7546
heidi@hlbirealestate.com



**COLDWELL BANKER
COMMERCIAL**
DANFORTH