

SUBLEASE

Central Medical Plaza

9750 NW 33rd St | Coral Springs, FL 33065

Sublease Space

5,158 SF or Partial

Asking Rent

\$26.00/SF NNN*

\$12.00/SF OpEx

Available

Immediately

Lease Expiration

07/01/2026

Flexibility in Lease Exp.

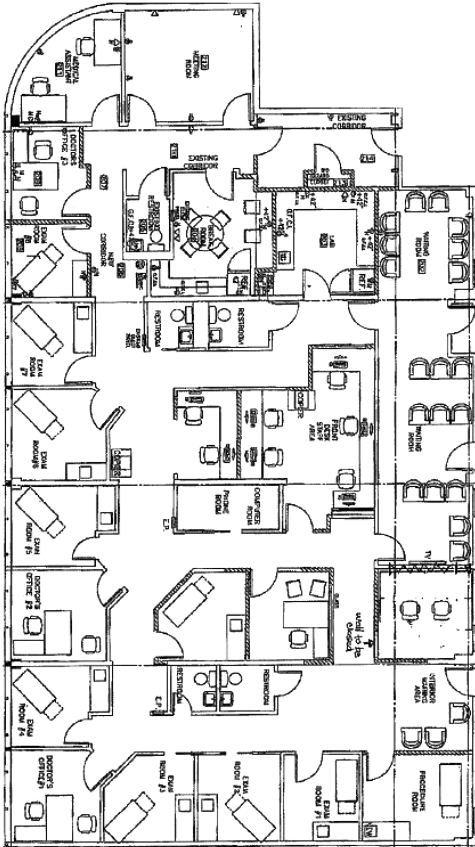
Turnkey Medical Space

Central Medical Plaza is a two-story, medical and office facility encompassing approximately 52,748 square feet. The building offers modern amenities such as 24-hour access, controlled entry, and an atrium, along with ample surface parking comprising 214 spaces. The plaza is designed to accommodate a range of healthcare providers, with available suites tailored for medical use.

The plaza hosts a diverse array of medical practices, reflecting its role as a comprehensive healthcare hub. The concentration of specialized services makes **Central Medical Plaza** a convenient destination for patients seeking comprehensive medical care in the Coral Springs area.

* Rent is negotiable for the first 2 years, then direct with the landlord with an estimate of \$26.50 NNN.

Floor Plan | Suites 211-214: **±5,158 SF**

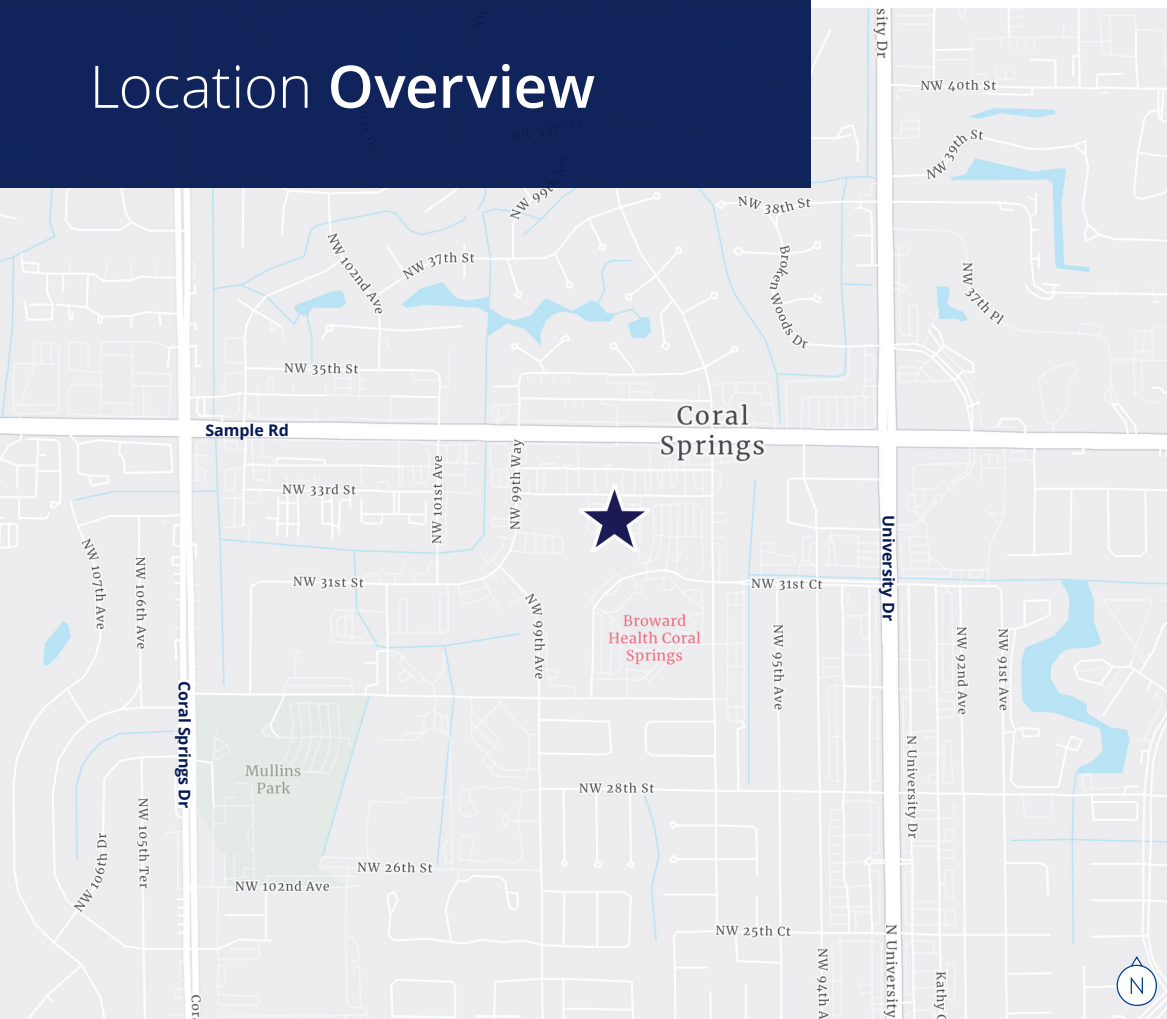


Suite Features:

- Fully built-out Medical Suite
- 9 Wet Exam Rooms
- Procedure Room
- 3 Offices
- 5 Bathrooms
- Open Offices for Admin and Support Staff
- Flexible lease expiration terms

Do Not Disturb Tenants

Location Overview



CONTACT US

Alexander Brown

Senior Vice President

+1 954 652 4632

alexander.brown@colliers.com



Colliers International Florida, LLC
200 E Broward Blvd, Suite 120
Fort Lauderdale, FL 33301

Copyright © 2025 Colliers International Florida, LLC. The information contained herein has been obtained from sources deemed reliable. While every reasonable effort has been made to ensure its accuracy, we cannot guarantee it. No responsibility is assumed for any inaccuracies. Readers are encouraged to consult their professional advisors prior to acting on any of the material contained in this report.