

RIVERBEND 3

FOR LEASE



261 RIVERBEND WAY SUITE 1 | NSL, UTAH 84054

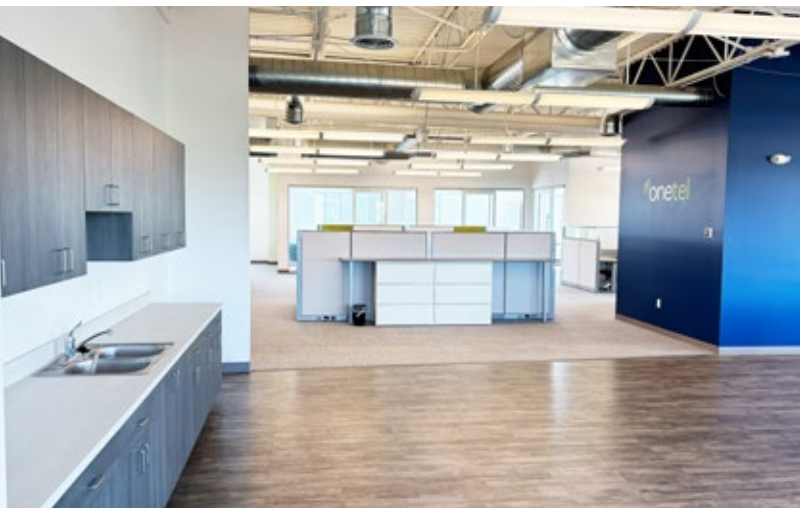
Marketed Exclusively by



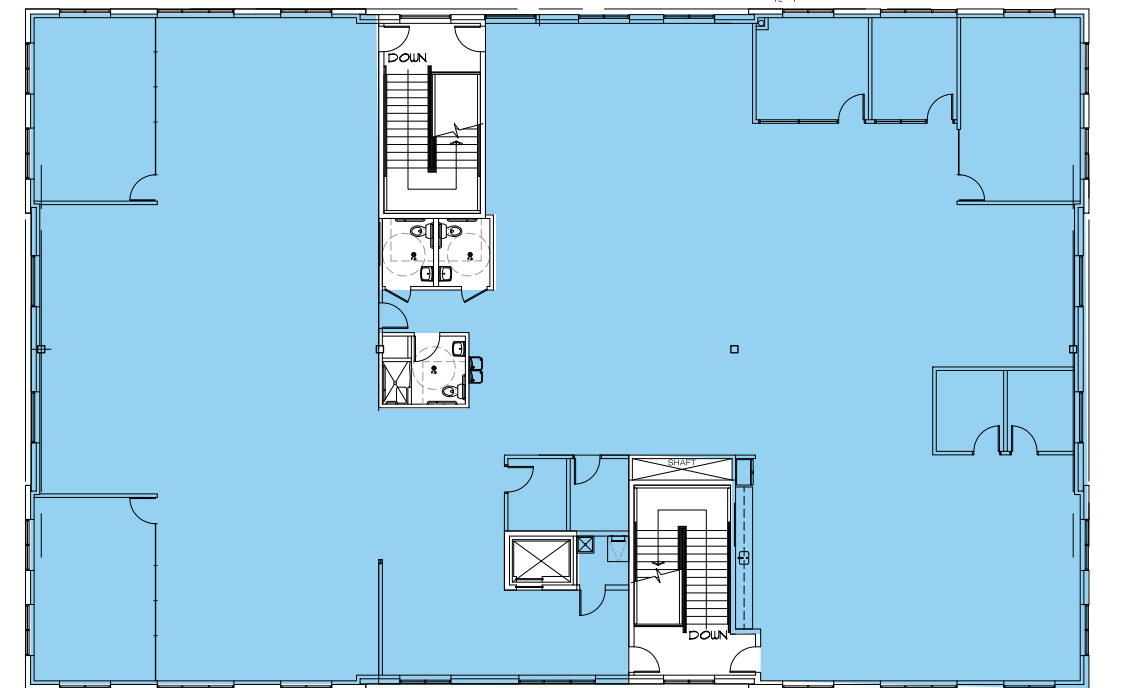
RIVERBEND 3

PROJECT FEATURES

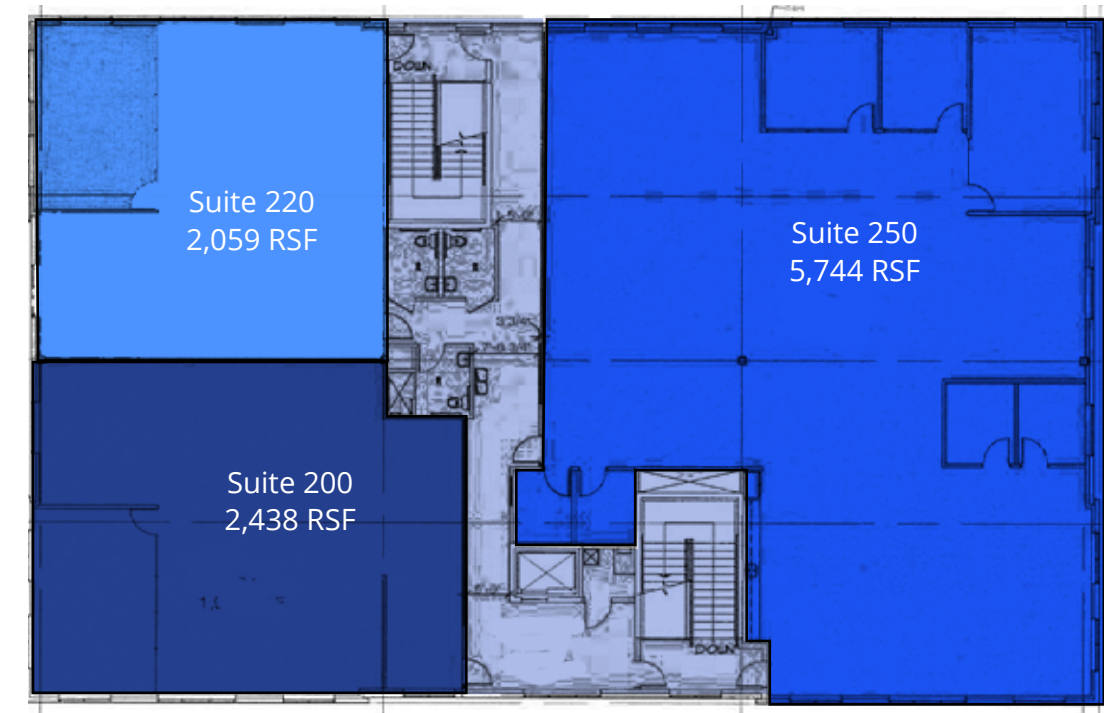
- 2nd Floor: 10,241 RSF
- Lease Rate: \$16.50 NNN per sq. ft. annually
- CAM: \$3.96 per sq. ft. annually
- Can be demised to 2,059 RSF
- Parking: 4/1000
- Easy access via I-215 Redwood Road exit.
- New modern finishes throughout
- Fully furnished plug and play ready through negotiation
- Multiple fiber providers
- Located within 10 minutes of SLC International Airport



CURRENT FLOOR PLAN



DEMISABLE FLOOR PLAN



Brandon Fugal
+1 801 947 8300
brandon.fugal@colliers.com

Josh Smith
+1 801 947 8300
josh.smith@colliers.com

Angela Kroneberger
+1 801 947 8300
angela.kroneberger@colliers.com

This document has been prepared by Colliers International for advertising and general information only. Colliers International makes no guarantees, representations or warranties of any kind, expressed or implied, regarding the information including, but not limited to, warranties of content, accuracy and reliability. Any interested party should undertake their own inquiries as to the accuracy of the information. Colliers International excludes unequivocally all inferred or implied terms, conditions and warranties arising out of this document and excludes all liability for loss and damages arising there from. This publication is the copyrighted property of Colliers International and/or its licensor(s). ©2024 All rights reserved.

AREA AMENITIES MAP



Brandon Fugal
+1 801 947 8300
brandon.fugal@colliers.com

Josh Smith
+1 801 947 8300
josh.smith@colliers.com

Angela Kroneberger
+1 801 947 8300
angela.kroneberger@colliers.com