

2993 US-22

Fredericksburg, PA 17026

- Access via Exit 6 and Exit 8 of I-78
- Public Water & Sewer
- Permitted Zoning Uses Include:
 - + Motor freight terminals
 - + Truck Stops
 - + Warehousing
 - + Business Center, professional or governmental offices

13.4

Acres

C-2

Highway Commercial
District



Contact Us

William Wolf

Vice Chairman
T +1 610 398 7175
bill.wolf@cbre.com
Licensed PA

Max Wolf

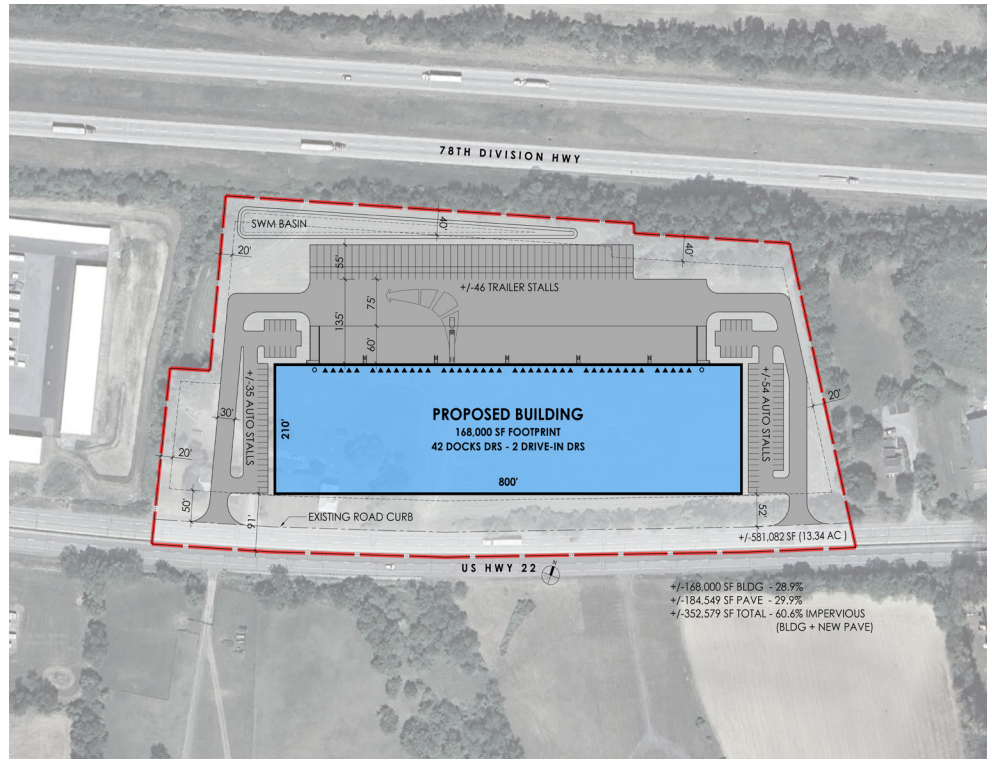
Senior Vice President
T +1 610 573 5343
max.wolf@cbre.com
Licensed PA

CBRE, Inc.

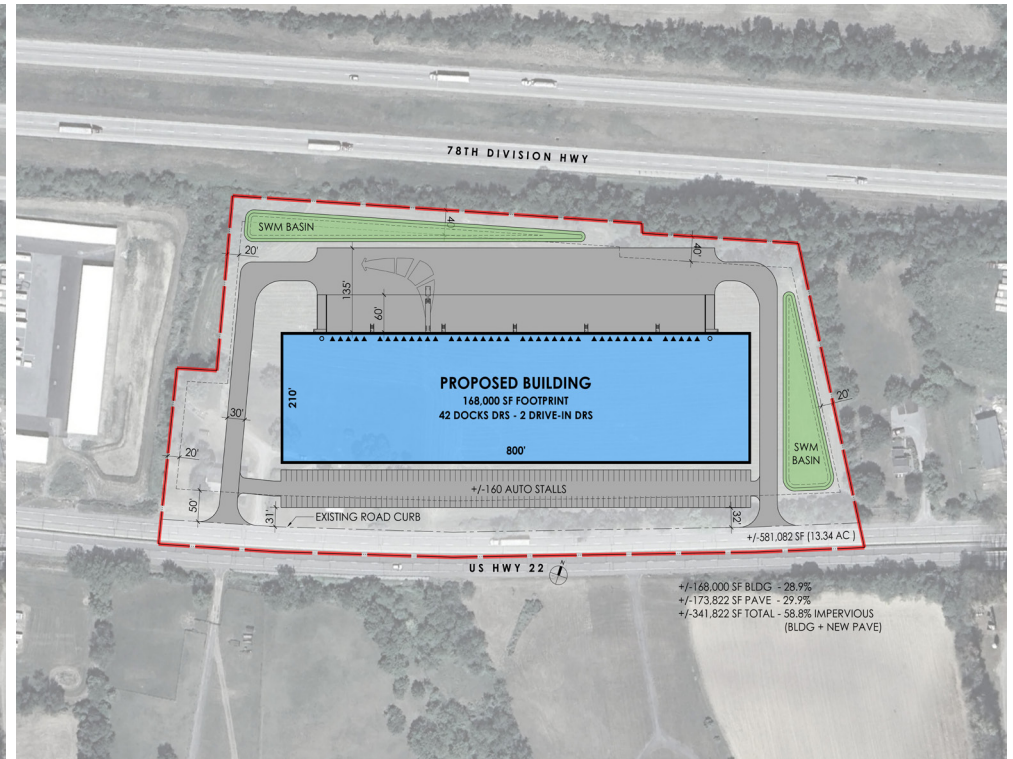
1275 Glenlivet Drive
Allentown, PA 18106 USA
+1 610 398 6900
Licensed Real Estate Broker

Conceptual Building Design:

Option 1:

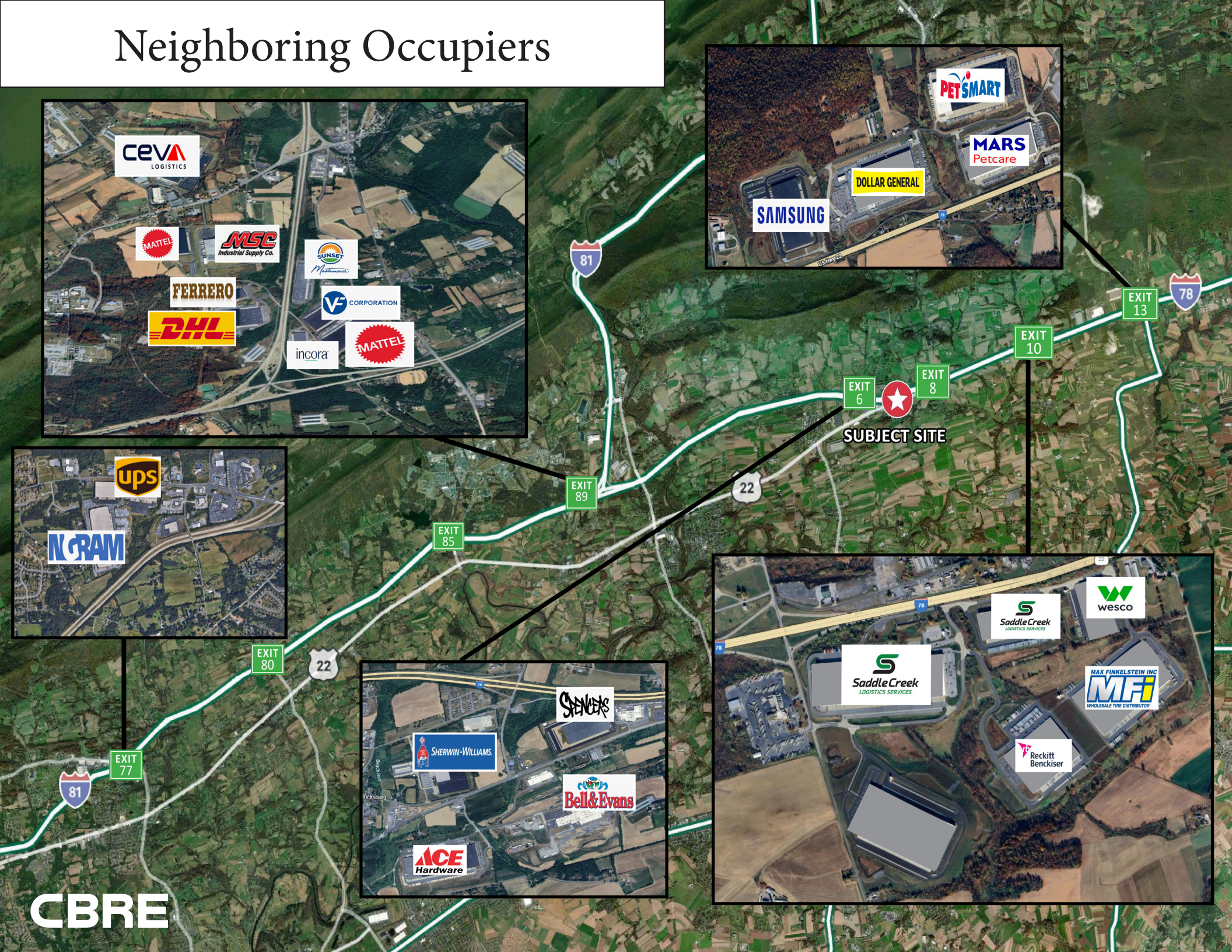
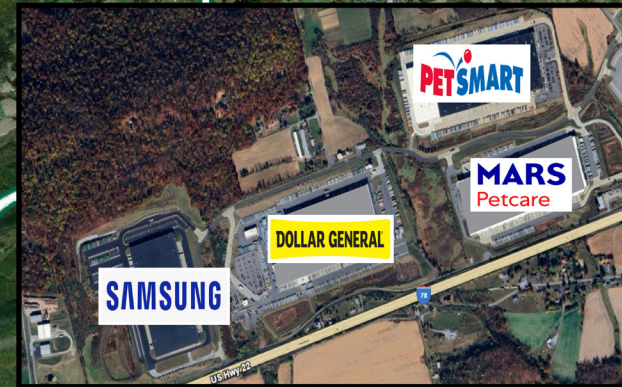


Option 2:



© 2025 CBRE, Inc. All rights reserved. This information has been obtained from sources believed reliable, but has not been verified for accuracy or completeness. You should conduct a careful, independent investigation of the property and verify all information. Any reliance on this information is solely at your own risk. CBRE and the CBRE logo are service marks of CBRE, Inc. All other marks displayed on this document are the property of their respective owners, and the use of such logos does not imply any affiliation with or endorsement of CBRE. Photos herein are the property of their respective owners. Use of these images without the express written consent of the owner is prohibited.

Neighboring Occupiers

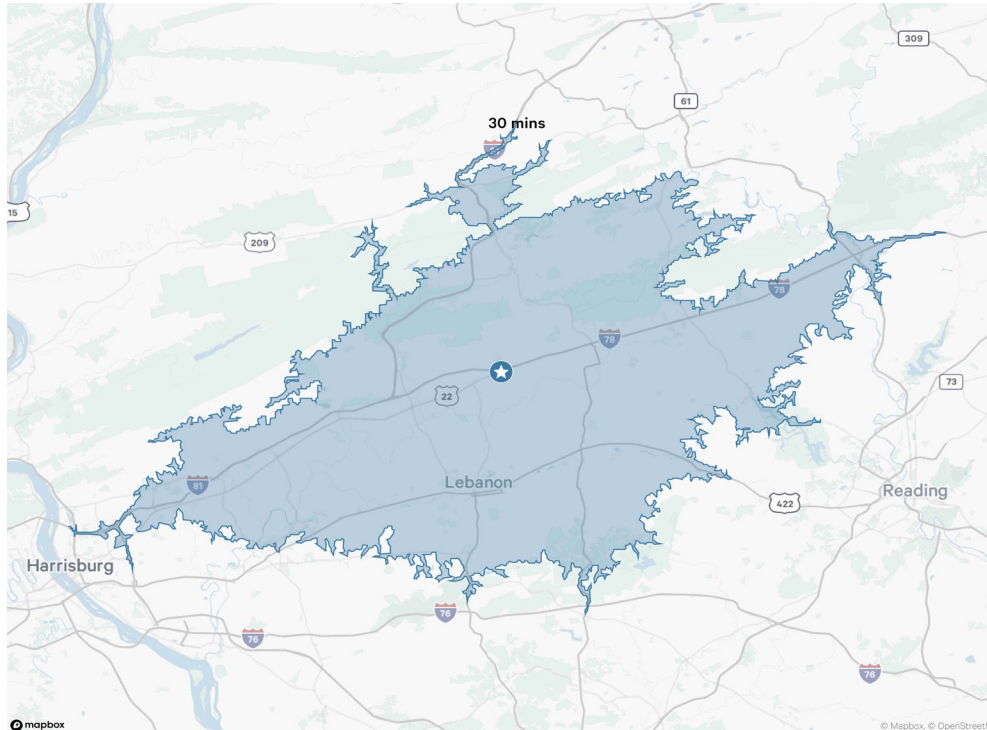


2993 US-22

Fredericksburg, PA 17026

For Sale

30 Minute Drive Time Map:



30 Minute Drive Time Demographics:



288,794

Total Population



153,793

Labor Force



40,967

Blue Collar Workers

© 2025 CBRE, Inc. All rights reserved. This information has been obtained from sources believed reliable, but has not been verified for accuracy or completeness. You should conduct a careful, independent investigation of the property and verify all information. Any reliance on this information is solely at your own risk. CBRE and the CBRE logo are service marks of CBRE, Inc. All other marks displayed on this document are the property of their respective owners, and the use of such logos does not imply any affiliation with or endorsement of CBRE. Photos herein are the property of their respective owners. Use of these images without the express written consent of the owner is prohibited.

www.cbre.com/allentown

CBRE