



# 775 JOHNSON FERRY ROAD NE

SANDY SPRINGS, GA 30342



**GRAHAM MASSELL**

- 📞 404.754.9800
- 🌐 MASSELL.COM
- 📧 GRAHAM@MASSELL.COM
- 📍 200 GLENRIDGE POINT PKWY  
STE 100, ATLANTA, GA 30342



**TONDALEYA CARTER**

- 📞 770.330.5293
- 🌐 MASSELL.COM
- 📧 TONDALEYA@MASSELL.COM

# 775 JOHNSON FERRY ROAD NE

SANDY SPRINGS, GA 30342



PRICE AT \$3,000,000

## ABOUT PROPERTY

---

This prime medical office building, located at the bustling intersection of Johnson Ferry and Glenridge Drive, boasts excellent visibility and accessibility. Just minutes from Northside Hospital, the 5,000 SF space is perfect for various healthcare specialties. Situated on 0.87 acres, the property offers ample parking. Positioned in the heart of Sandy Springs, one of Atlanta's most affluent and rapidly growing areas, this property benefits from a high demand for medical services. Surrounded by a dense population and numerous medical facilities, this location ensures a steady flow of patients and clients, enhancing its appeal to medical practitioners and investors alike.



# 775 JOHNSON FERRY ROAD NE

SANDY SPRINGS, GA 30342

## PROPERTY OVERVIEW

---

Size: 5,000 SF Medical Office Building

19 Parking Spaces & Gravel Lot for staff

Location: Busy intersection of Johnson Ferry and Glenridge Drive, near Northside Hospital

Lot Size: 0.87 acres

Zoning: OIC

Price: \$3,000,000

## KEY FEATURES

---

**Prime Location:** Situated at a high-traffic intersection, ensuring excellent visibility and accessibility.

**Proximity to Medical Facilities:** Just minutes from Northside Hospital, making it an ideal location for medical practitioners and healthcare services.

**Spacious Layout:** 5,000 SF of well-designed medical office space, suitable for various healthcare specialties.

**Land Size:** 0.87 acres providing ample space for parking and future expansion possibilities.



# 775 JOHNSON FERRY ROAD NE | PHOTOS



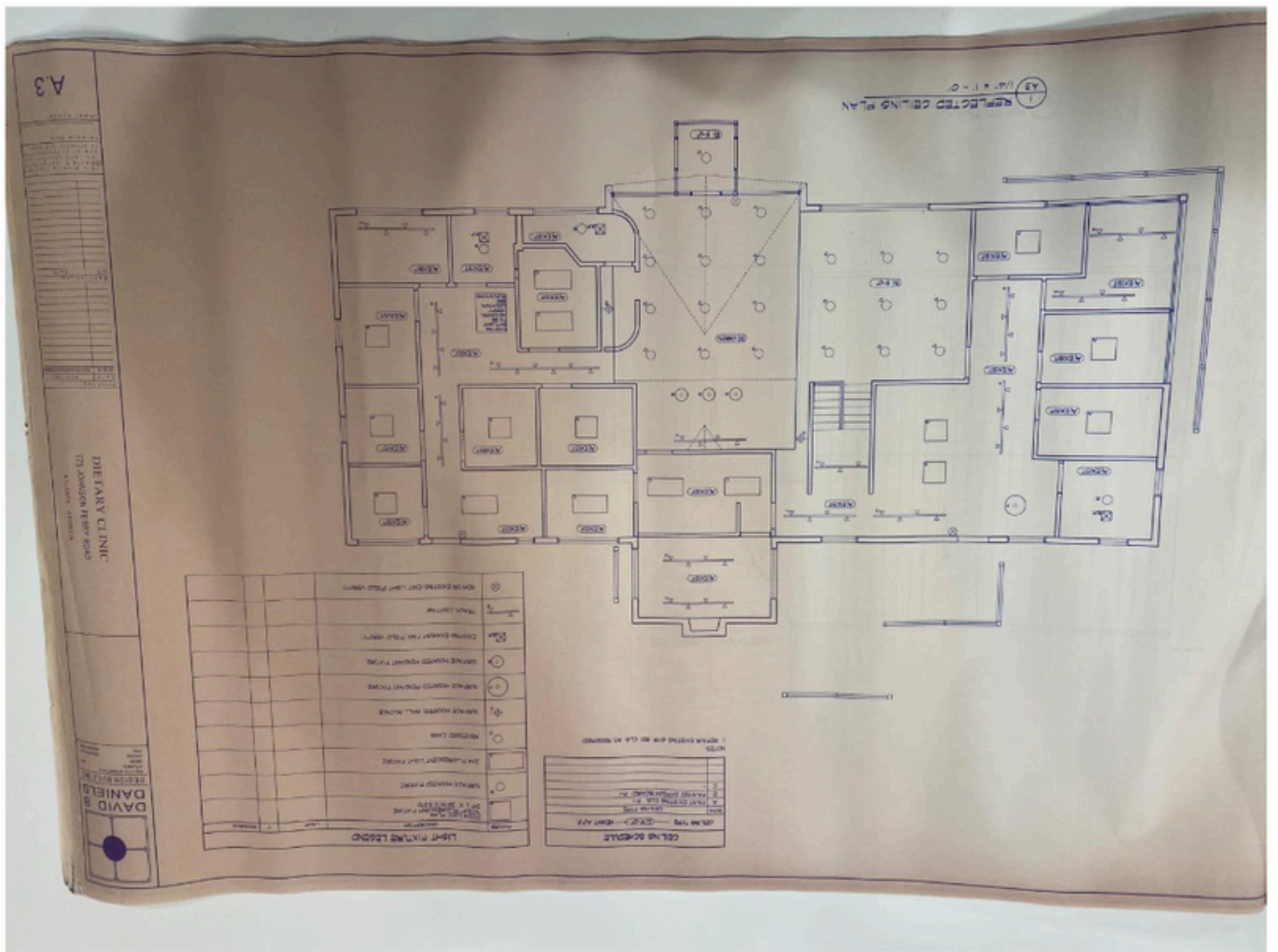
# 775 JOHNSON FERRY ROAD NE | PHOTOS



# 775 JOHNSON FERRY ROAD NE | PHOTOS



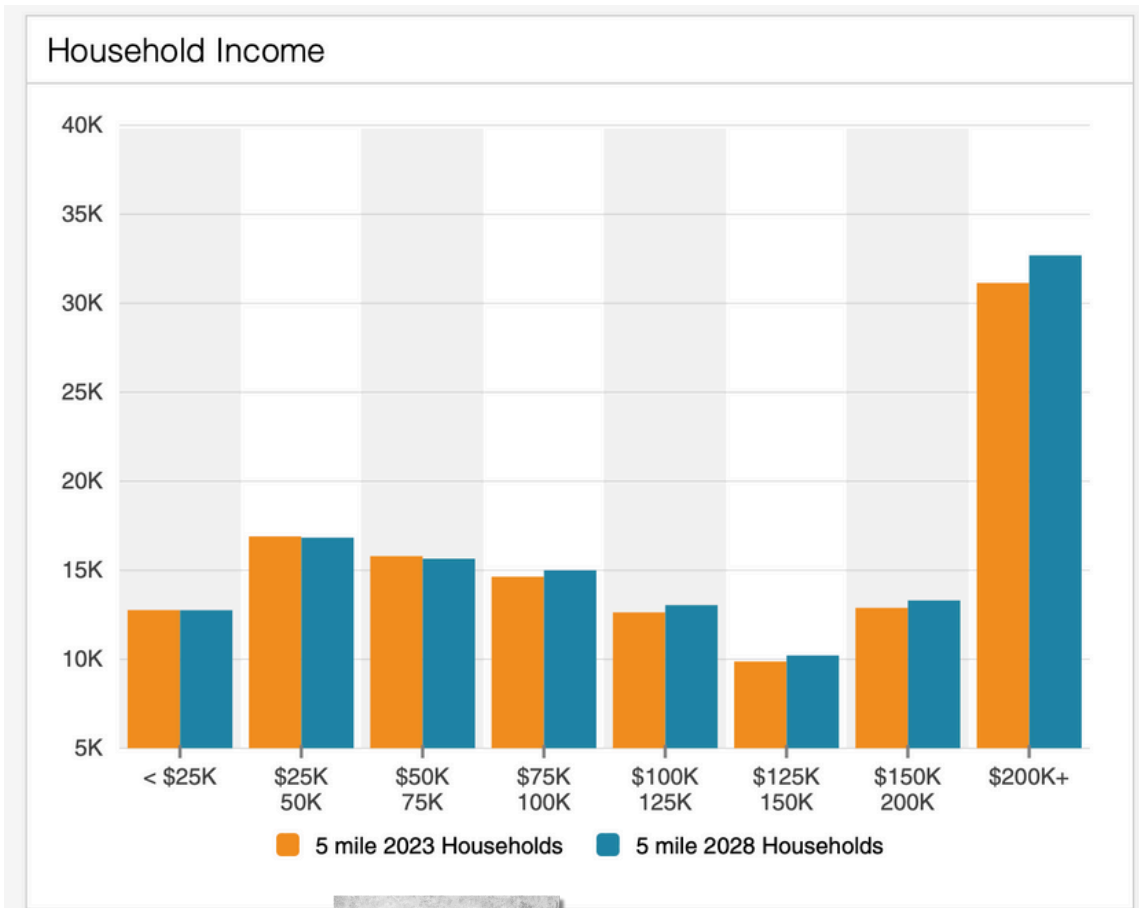
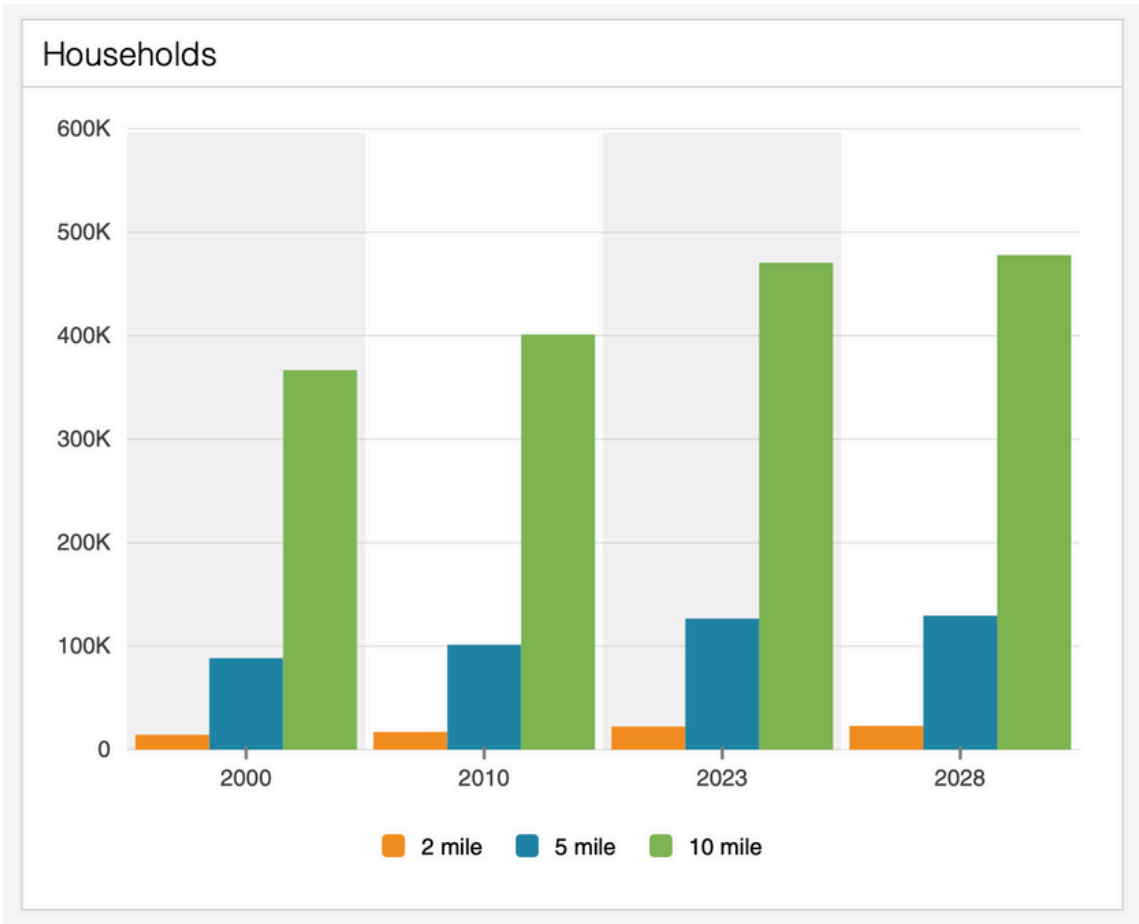
# 775 JOHNSON FERRY ROAD NE | FLOOR PLAN



[CLICK FOR MORE PHOTOS](#)

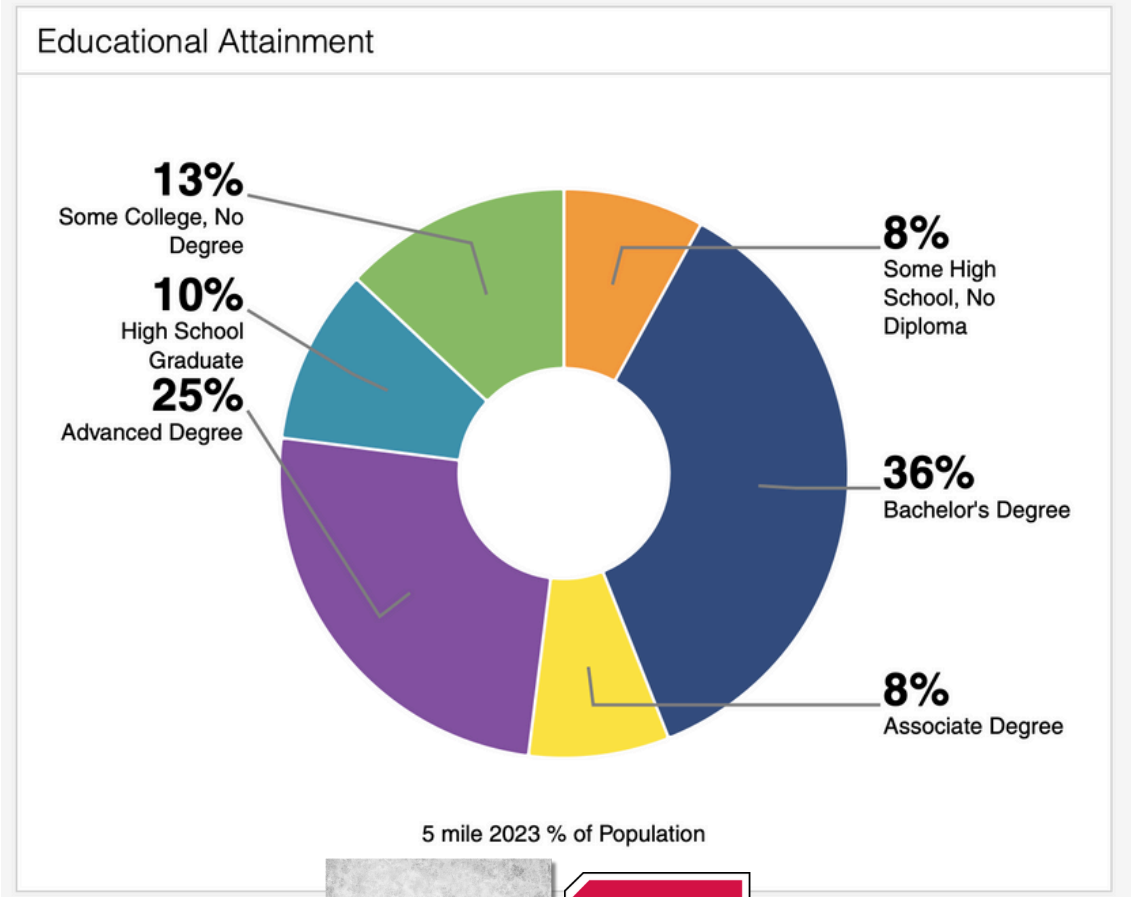
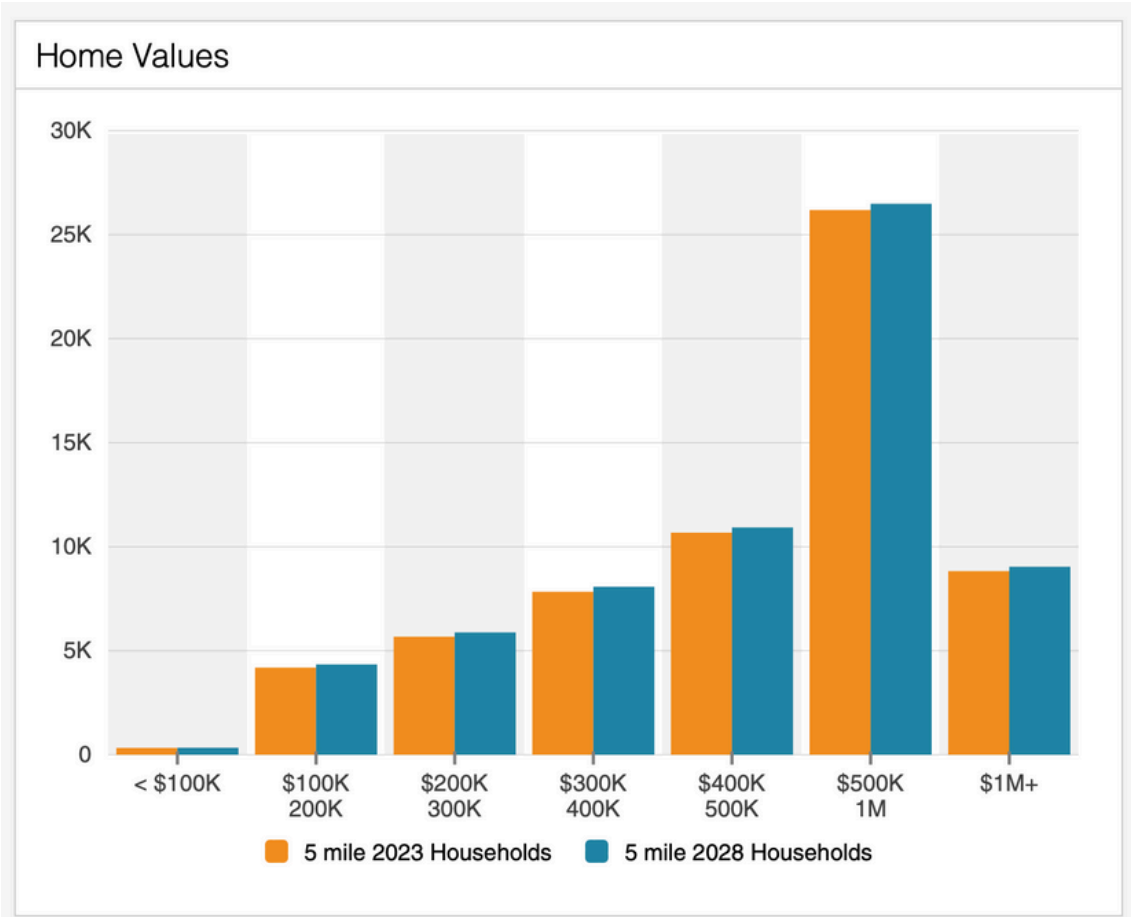


# 775 JOHNSON FERRY ROAD NE | DEMOGRAPHICS



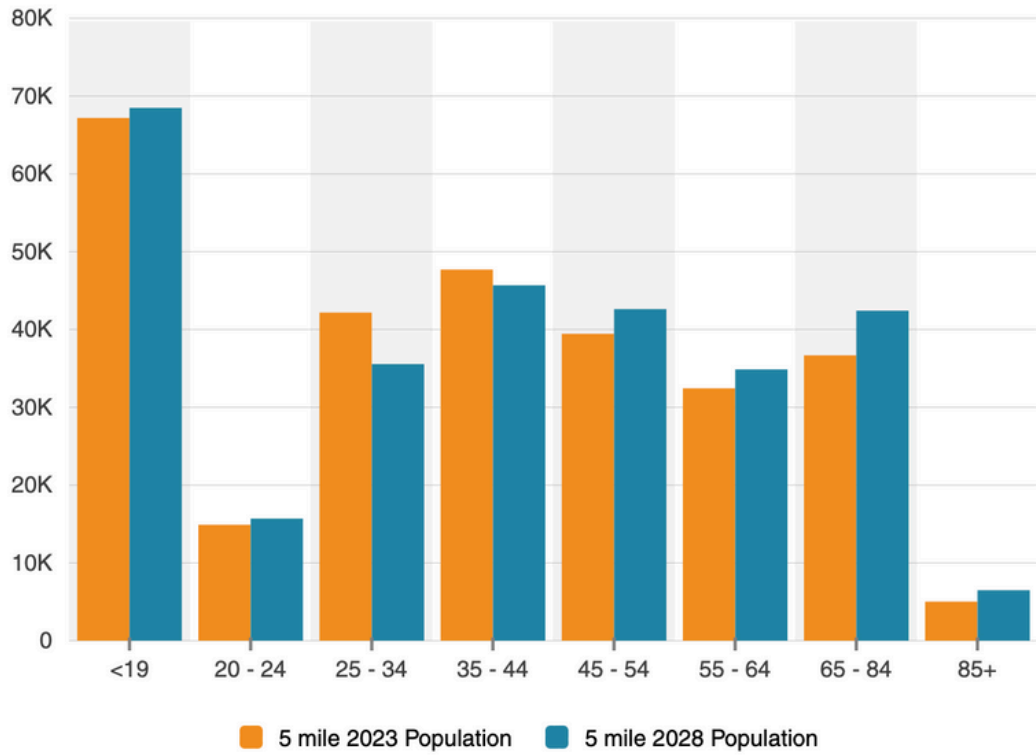


# 775 JOHNSON FERRY ROAD NE | DEMOGRAPHICS

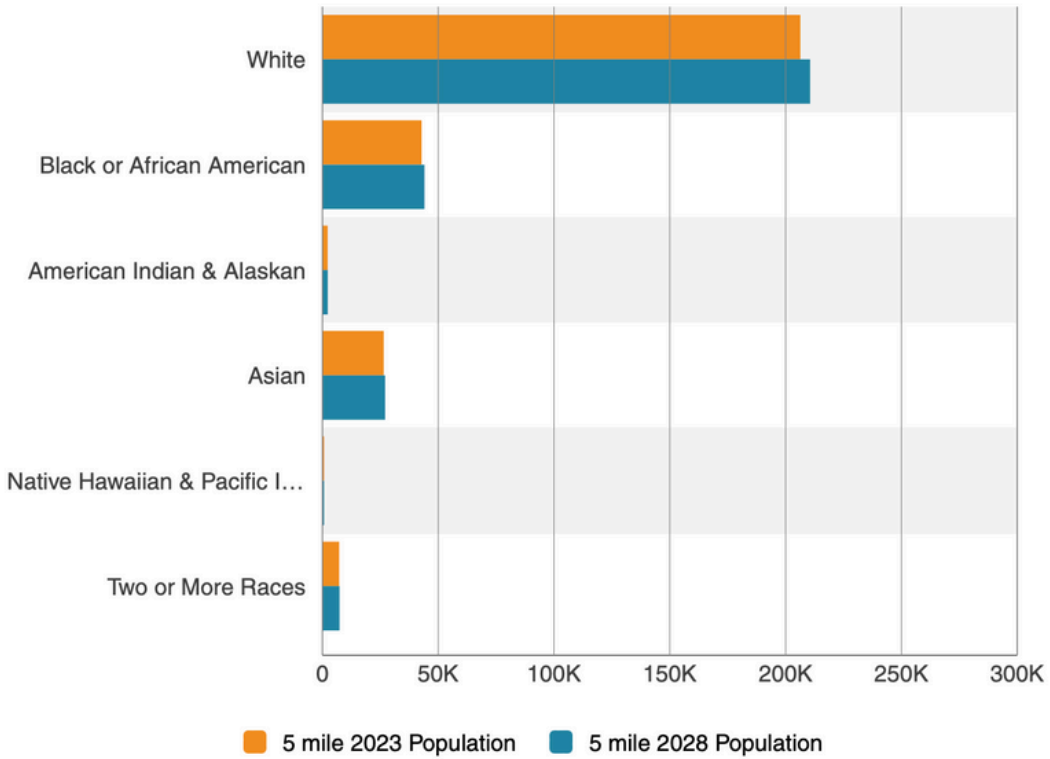


# 775 JOHNSON FERRY ROAD NE | DEMOGRAPHICS

### Population By Age



### Population By Race



# Disclaimer

All materials and information received or derived from KW Commercial its directors, officers, agents, advisors, affiliates and/or any third party sources are provided without representation or warranty as to completeness, veracity, or accuracy, condition of the property, compliance or lack of compliance with applicable governmental requirements, developability or suitability, financial performance of the property, projected financial performance of the property for any party's intended use or any and all other matters.

Neither KW Commercial its directors, officers, agents, advisors, or affiliates makes any representation or warranty, express or implied, as to accuracy or completeness of the materials or information provided, derived, or received. Materials and information from any source, whether written or verbal, that may be furnished for review are not a substitute for a party's active conduct of its own due diligence to determine these and other matters of significance to such party. KW Commercial will not investigate or verify any such matters or conduct due diligence for a party unless otherwise agreed in writing.

EACH PARTY SHALL CONDUCT ITS OWN INDEPENDENT INVESTIGATION AND DUE DILIGENCE.

Any party contemplating or under contract or in escrow for a transaction is urged to verify all information and to conduct their own inspections and investigations including through appropriate third-party independent professionals selected by such party. All financial data should be verified by the party including by obtaining and reading applicable documents and reports and consulting appropriate independent professionals. KW Commercial makes no warranties and/or representations regarding the veracity, completeness, or relevance of any financial data or assumptions. KW Commercial does not serve as a financial advisor to any party regarding any proposed transaction.

All data and assumptions regarding financial performance, including that used for financial modeling purposes, may differ from actual data or performance. Any estimates of market rents and/or projected rents that may be provided to a party do not necessarily mean that rents can be established at or increased to that level. Parties must evaluate any applicable contractual and governmental limitations as well as market conditions, vacancy factors and other issues in order to determine rents from or for the property. Legal questions should be discussed by the party with an attorney. Tax questions should be discussed by the party with a certified public accountant or tax attorney. Title questions should be discussed by the party with a title officer or attorney. Questions regarding the condition of the property and whether the property complies with applicable governmental requirements should be discussed by the party with appropriate engineers, architects, contractors, other consultants, and governmental agencies. All properties and services are marketed by KW Commercial in compliance with all applicable fair housing and equal opportunity laws.

## MASSELL COMMERCIAL. REAL. ESTATE

200 Glenridge Point Parkway Ste. 100  
Atlanta, GA 30319

Each Office Independently Owned and Operated

### Graham Massell

O: 404-255-6810

C: 404-754-9800

graham@massell.com

### Tondaleya Carter

O: 404-255-6810

C: 770-330-5293

tondaleya@massell.com

The calculations and data presented are deemed to be accurate, but not guaranteed. They are intended for the purpose of illustrative projections and analysis. The information provided is not intended to replace or serve as substitute for any legal, accounting, investment, real estate, tax or other professional advice, consultation or service. The user of this software should consult with a professional in the respective legal, accounting, tax or other professional area before making any decisions.

