

# SEWELL CORPORATE PARK

4630 NW 273RD AVENUE - 4915 NE SEWELL AVENUE  
HILLSBORO, OR 97124

**NOW COMPLETED**



**▶ DRONE VIDEO**  
PHASE II PAN TO PHASE I

**DEVELOPED BY:**

**Trammell Crow Company**

Clayton Madey  
503.972.7277  
clayton@macadamforbes.com  
Licensed In OR

**MACADAM FORBES**  
COMMERCIAL REAL ESTATE SERVICES

2 Centerpointe Drive, Suite 500 | Lake Oswego, OR 97035

MACADAMFORBES.COM | 503.227.2500

All of the information contained herein was obtained either from the owner or other parties we consider reliable. We have no reason to doubt its accuracy, however we do not guarantee it.

# SEWELL CORPORATE PARK

4630 NW 273RD AVENUE - 4915 NE SEWELL AVENUE HILLSBORO, OR 97124

Sewell Corporate Park is a new-construction industrial development with ample loading and parking, located in the heart of Hillsboro's technology corridor. There is flexibility in size and configuration depending on a user's need.

Allowed uses including but not limited to:



DATA CENTERS



LOGISTICS



MANUFACTURING



SEMICONDUCTOR



RESEARCH & DEVELOPMENT



FOOD PRODUCTION



BIOTECH



CORPORATE HEADQUARTERS

## THE HIGHLIGHTS

- Only 2025 speculative delivery of its size in Hillsboro
- Building Sale and Lease opportunities
- Hillsboro municipal utilities
- Clear height: 36' for Building 2 and 32' for Building 1
- LEED Silver Certification
- The next development on the path of progress in the North Hillsboro Industrial District
- Close proximity to nearby industries including chip-makers, data centers, and pharmaceuticals
- Entire site is in the Enterprise Zone which can create tax benefits for qualified users. Details can be found on the [Hillsboro City Website](#).



# SEWELL CORPORATE PARK

4630 NW 273RD AVENUE - 4915 NE SEWELL AVENUE  
HILLSBORO, OR 97124

## THE DETAILS

- Pricing: Contact Broker
- Site area: 24 acres
- Zoning: IS (Industrial Sanctuary – City of Hillsboro)
- Nearby roadways: Evergreen Rd, Jackson School Rd, Huffman Rd, Highway 26, Brookwood Pkwy
- Power provider: PGE
- Utilities: Hillsboro municipal utilities
- LEED certified project

### BUILDING 1

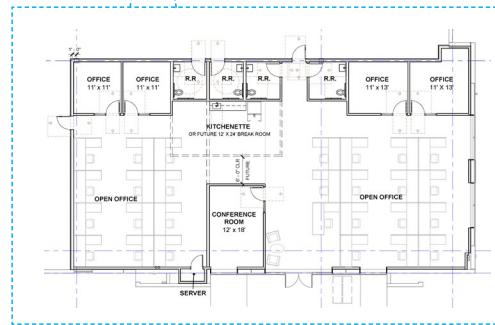
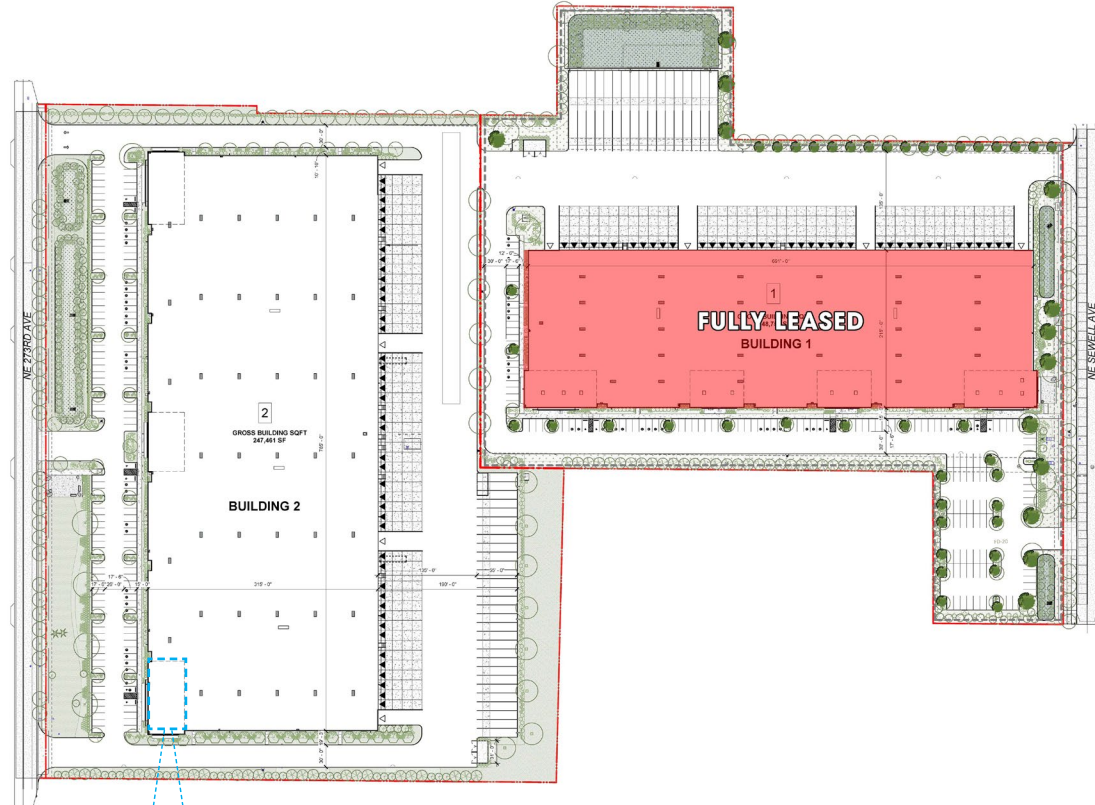
148,751 SF

Remaining Available Space:	Fully Leased
Auto Parking:	160
Trailer Parking:	23
Dock Doors:	38
Grade Doors:	4
Column Spacing:	54'
Clear Height:	32'
Power:	3-Phase, 1 x 3000 amp service
Land Area:	9 acres

### BUILDING 2

247,461 SF

Auto Parking:	137
Trailer Parking:	30
Dock Doors:	44
Grade Doors:	4
Column Spacing:	54'
Clear Height:	36'
Power:	3-Phase, 1 x 3000 amp service
Land Area:	15 acres
Existing Spec Office:	4,240 SF



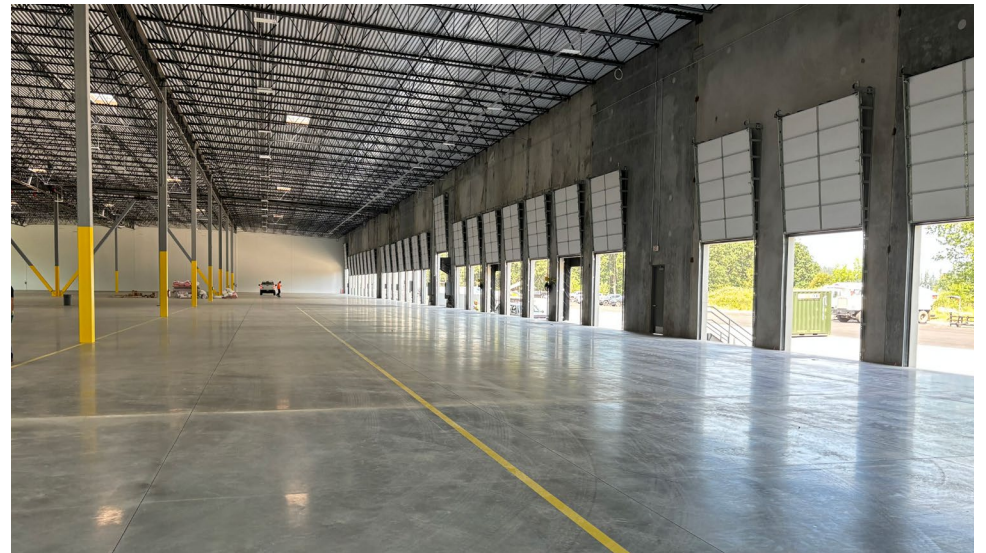
# SEWELL CORPORATE PARK

4630 NW 273RD AVENUE - 4915 NE SEWELL AVENUE HILLSBORO, OR 97124



# SEWELL CORPORATE PARK

4630 NW 273RD AVENUE - 4915 NE SEWELL AVENUE HILLSBORO, OR 97124



# SEWELL CORPORATE PARK

4630 NW 273RD AVENUE - 4915 NE SEWELL AVENUE HILLSBORO, OR 97124

## THE DEVELOPMENT TEAM

### Trammell Crow Company

Trammell Crow Company (TCC) is a global commercial real estate developer and wholly-owned subsidiary of CBRE Group, Inc. (NYSE:CBRE), a Fortune 500 and S&P 500 company headquartered in Dallas. Founded in 1948, TCC has developed or acquired nearly 2,900 buildings valued at \$75 billion and over 655 million square feet. As of June 30, 2024, TCC had \$18.8 billion of projects in process and \$13.1 billion in its pipeline. With more than 625 employees throughout the United States and Europe, the company serves users of and investors in office, industrial/logistics, healthcare, life sciences and mixed-use projects, as well as multi-family residential through its operating subsidiary High Street Residential. For more information visit [www.TrammellCrow.com](http://www.TrammellCrow.com).



## GXO LOGISTICS BTS | HILLSBORO, OR

