



FOR SALE

VACANT - OWNER / USER READY

6464

W. PLANO PKWY

Plano, Texas 75093
16,280 square feet


STREAM

BUILDING HIGHLIGHTS

- 16,280 Square Feet
- 1.25 Acres (52,381 square feet)
- Year Built: 2006
- Two Stories with elevator service
- Sprinklered
- 75 spaces (4.6 spaces per 1,000 RSF)
- L1 Zoning
- HVAC services by 5 RTU's
- Users: retail, medical office, office, special events
- Grease trap kitchen included a vent-a-hood

4.0 MILES TO LEGACY WEST SHOPPING & DINING
16.6 MILES FROM DALLAS LOVE FIELD
20.2 MILES FROM DFW INTERNATIONAL AIRPORT

SALE PRICE:
\$4,400,000
\$270.27/SF



Building Features

Freestanding Building

Frontage on W Plano Parkway

17,000 vehicles per day drive-by

\$122,000 Median Household Income within 1 mile

Population of 205,000 within 3 miles

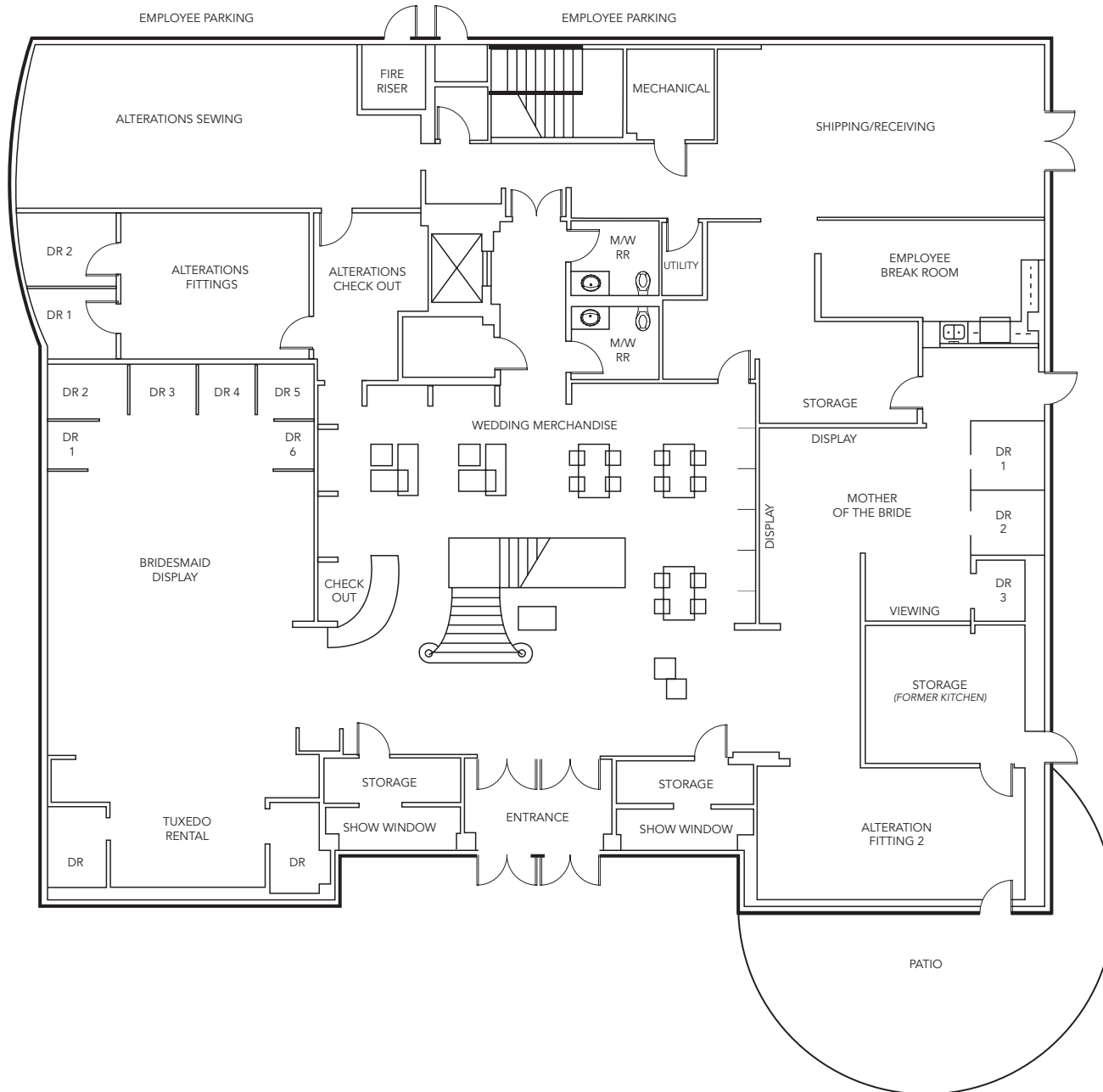
3 Minutes to the Dallas North Tollway

Architectural Replica of Frank Lloyd Wright Construction



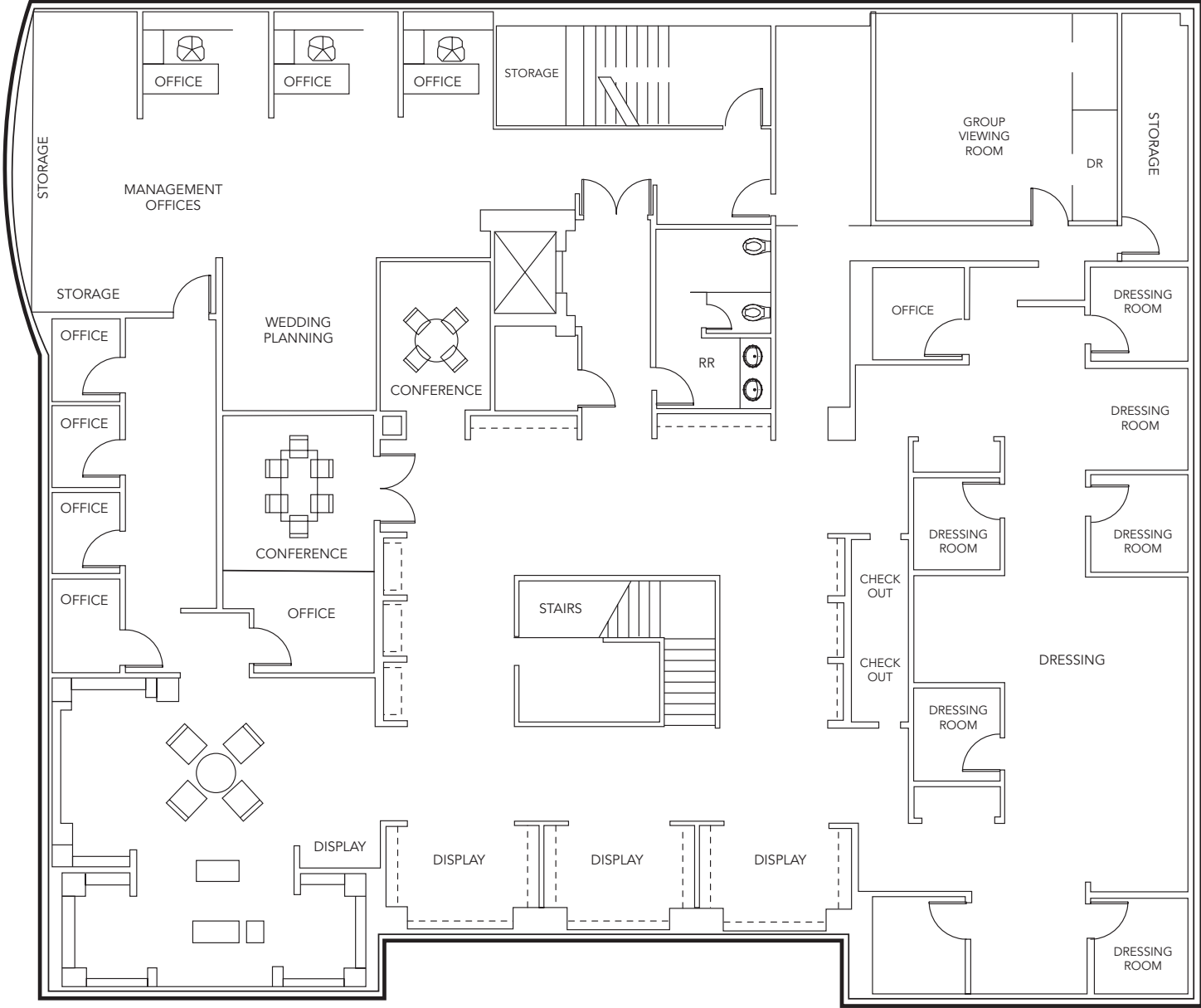
1ST Floor

8,140 RSF



2ND Floor

8,140 RSF





CLICK FOR
VIRTUAL TOUR

STREAM

FOR MORE INFORMATION, PLEASE CONTACT

JAMES MANTZURANIS

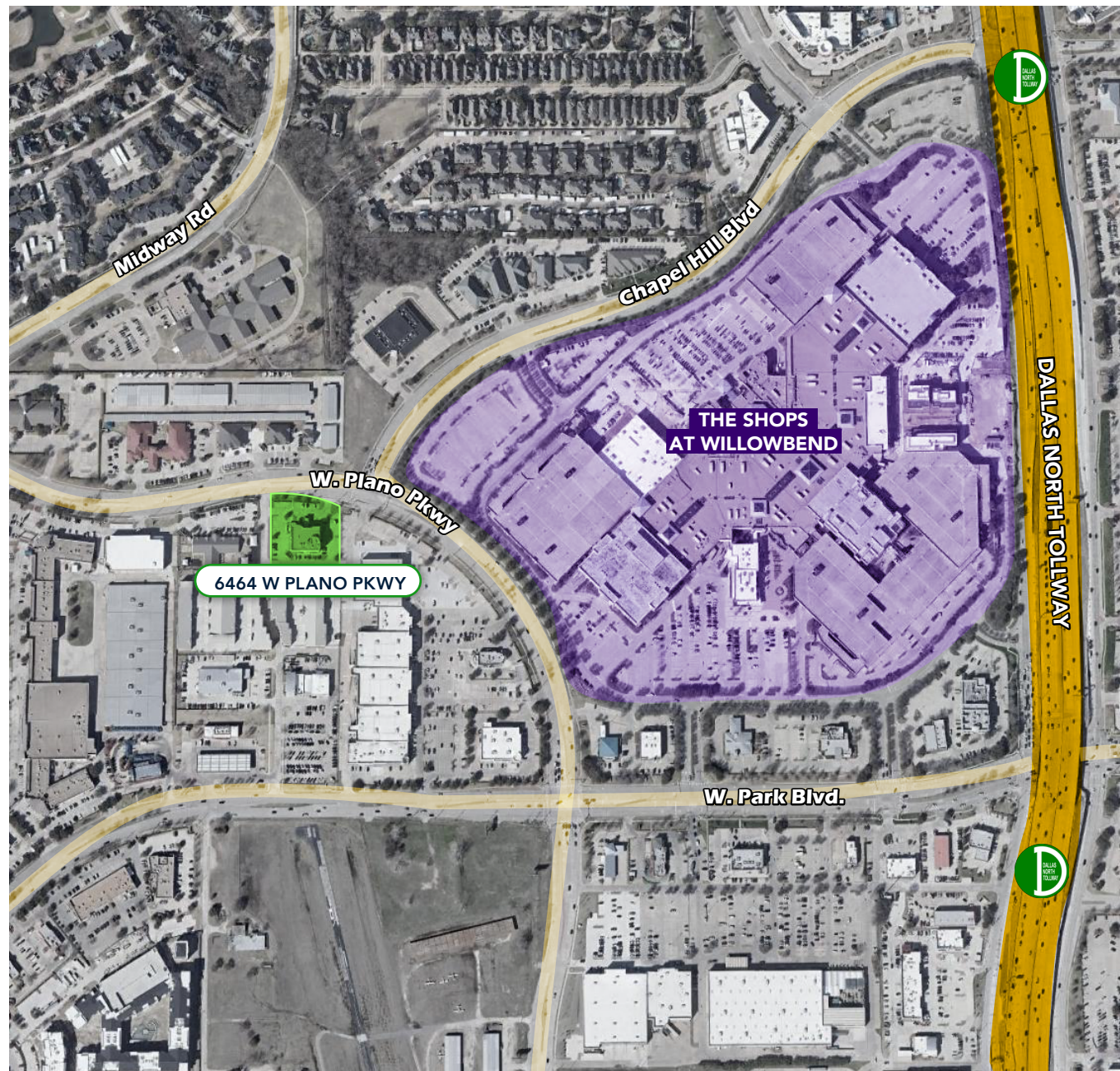
214.267.0494

jmantzuranis@streamrealty.com

HANES CHATHAM

817.729.5555

hanes.chatham@partnersrealestate.com



Copyright © 2025 Stream Realty Partners, All rights reserved. The information contained herein was obtained from sources believed reliable; however, Stream Realty Partners, L.P. make no guarantees, warranties, or representations as to the completeness or accuracy thereof. The presentation of this property is submitted subject to errors, change of price, or conditions, prior sale or lease, or withdrawal without notice.