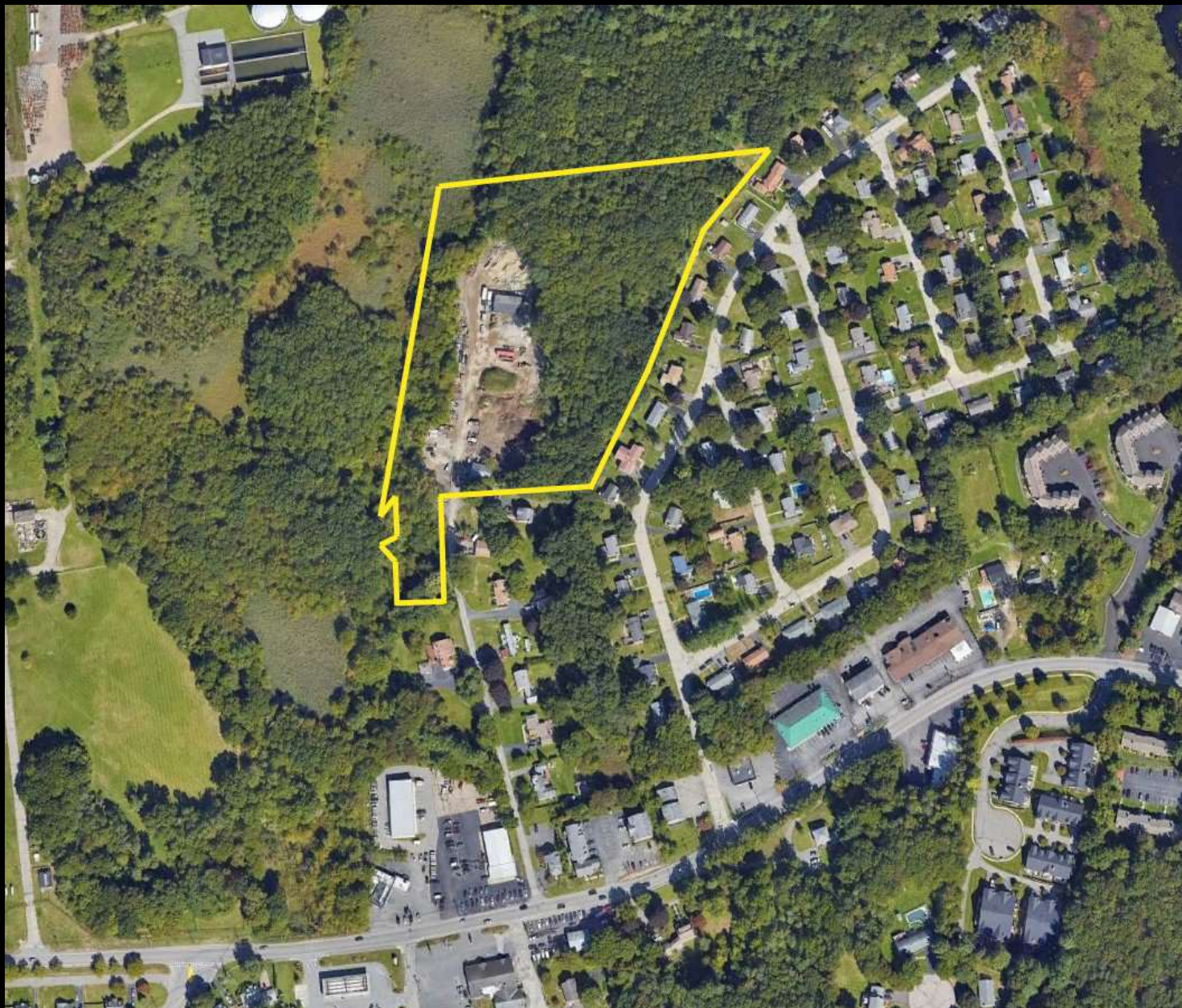


LAND FOR SALE

18-22 DONAHUE ROAD

Grafton, Massachusetts



DAVID V. COHEN

508.864.2379

cohen@kelleher-sadowsky.com

DREW HIGGINS

508.635.6784

higgins@kelleher-sadowsky.com





PROPERTY DESCRIPTION

Kelleher & Sadowsky is pleased to bring to market for sale 8.04 acres of land in Grafton, MA. Located just off Route 122, with great access to the MA Turnpike. The parcel is improved with a 2,400 square foot cinder block building that has a 14' x 14' drive-in door. This site is approved for contractor yard usage and is the perfect location for any industry use that requires large outdoor space, such as landscaping.

OFFERING SUMMARY

| | |
|-----------------|-------------------------------------------------------------------------|
| Property Type: | Land |
| Available Land: | 8.04 acres improved with a 2,400 SF building |
| Zoning: | OLI (Office/Light Industrial) |
| Utilities: | Private water & sewer (none on-site) Water/Sewer available on Rt. 12 |
| Electricity: | Available on-site |
| Sale Price: | Call for pricing |

DEMOGRAPHICS

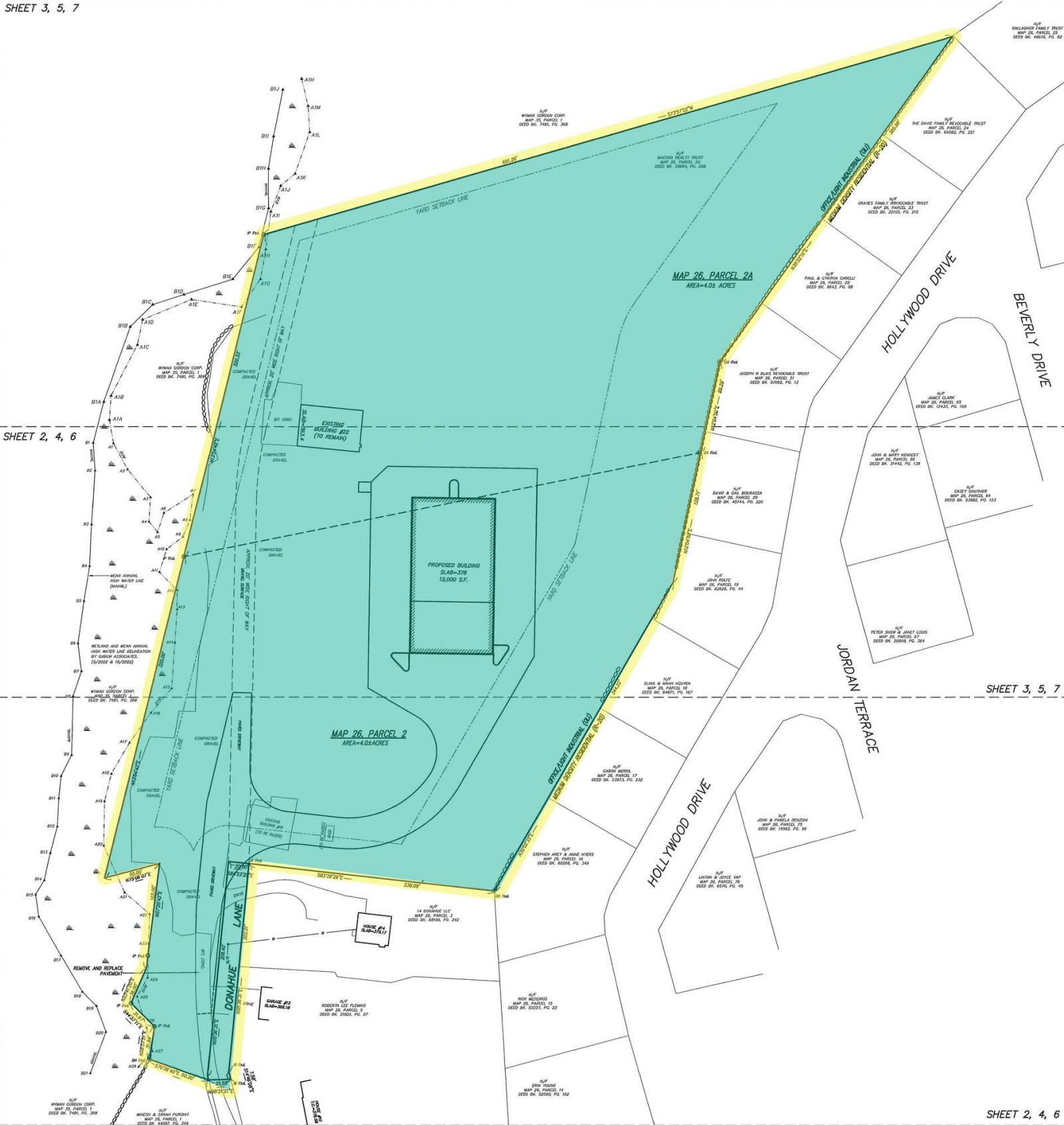
| | 1 MILE | 3 MILES | 5 MILES |
|-------------------|---------------|----------------|----------------|
| Total Households | 1,435 | 16,773 | 62,189 |
| Total Population | 3,718 | 40,345 | 148,775 |
| Average HH Income | \$108,273 | \$104,777 | \$86,603 |

SHEET 3, 5, 7

SHEET 2, 4, 6

SHEET 3, 5, 7

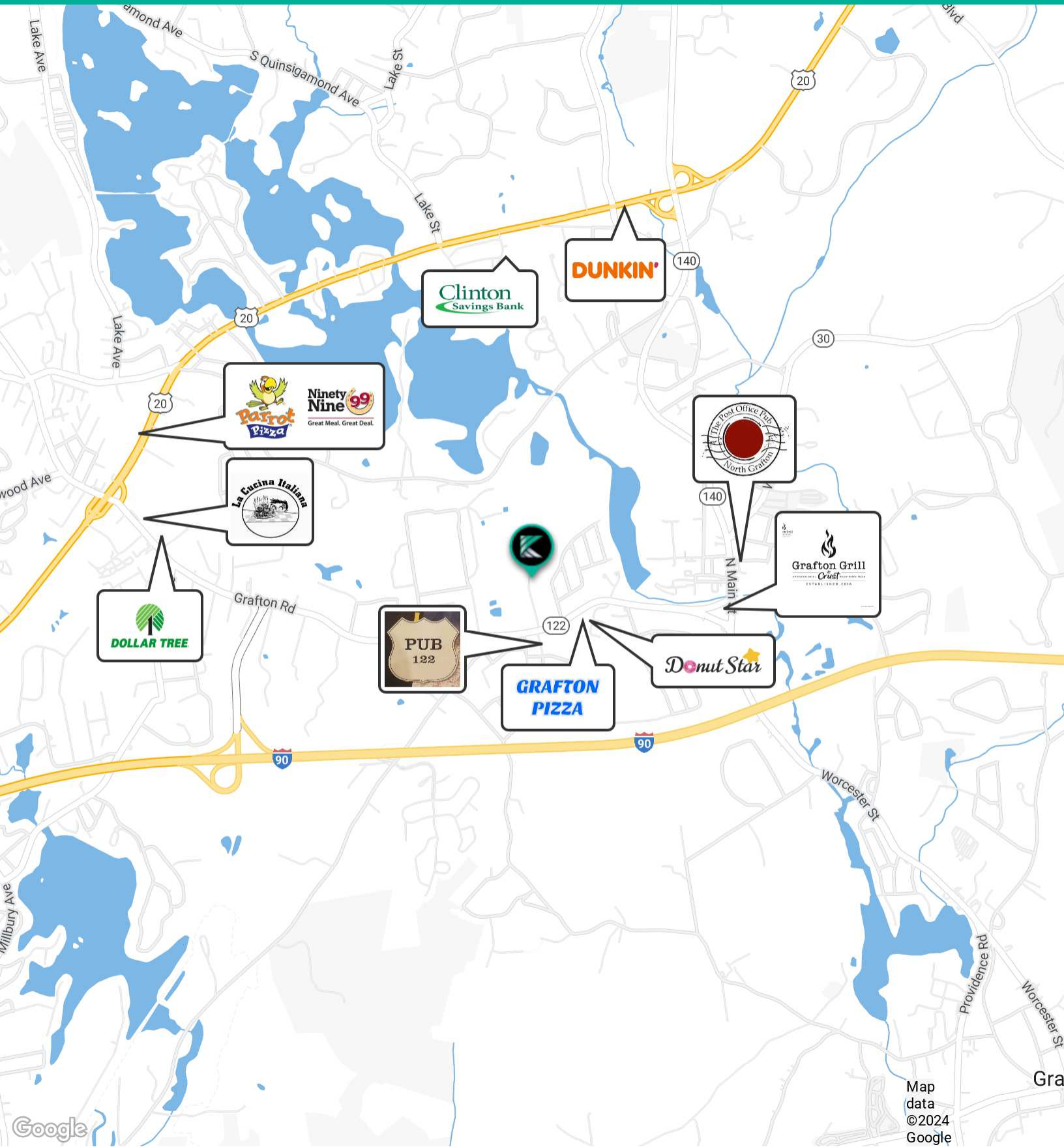
SHEET 2, 4, 6





FOR SALE • 18-22 DONAHUE ROAD

Location Map



Map data ©2024 Google