



# INWOOD VILLAGE

• BUSINESS PARK •

2722 W. BITTERS RD  
SAN ANTONIO, TX 78248

*\* Move-In Ready Class A Office Suites from 1,600 SF to 3,600 SF \**



WORTH  
& ASSOCIATES

7373 Broadway, Suite 201 • San Antonio, TX 78209  
210.822.5220 • Fax 210.822.5224 • [www.worthsa.com](http://www.worthsa.com)

CONTACT:

Shawn Gulley  
210.805.3333  
[shawn@worthsa.com](mailto:shawn@worthsa.com)

Rob Gish  
210.805.3370  
[rob@worthsa.com](mailto:rob@worthsa.com)





## ▪ MOVE-IN READY ▪ SUITE CONCEPT

- 30 Move In Ready Class A Office Suites ranging in size from 1,400 SF to 5,000 SF
- Suites Can be Combined to Form Larger Contiguous Spaces
- Expedited lease process with shorter lease forms
- The lobby, common areas and restrooms feature high end finishes, and all suites will have access to a fully equipped break room, 2 conference rooms and building Wi-Fi

## ▪ BUILDING INFORMATION ▪

*Inwood Village is currently planned as a two building office project in the highly desirable Far North Central Submarket of San Antonio in the master planned business community of Inwood Heritage Oaks.*

- Two Story, 77,035 SF Class A Office Building
- On-Site Management Office
- Space Plans that can Accommodate Multiple Business Needs
- Beautiful Campus Like Setting with Native Trees and Scenic Landscaping
- Great Far North Central Location next to Plenty of Restaurants, Shops, Great Neighborhoods and other area amenities
- Excellent Access to Loop 1604, Bitters Road, IH-10 and Highway 281
- Fully Equipped Common Tenant Lounge
- Two Common Conference Rooms with State of the Art Visual and Audio Equipment
- Various Suite Sizes and Expansion Opportunities
- 10' Ceiling Height
- Building Wi-Fi
- Secured by Cameras and Equipped with Card Access System
- Pre-Wired Suites for Voice and Data
- Outdoor Patio and Deck



**INWOOD VILLAGE**  
• BUSINESS PARK •

CONTACT:

Shawn Gulley  
210.805.3333  
shawn@worthsa.com

Rob Gish  
210.805.3370  
rob@worthsa.com







# INWOOD VILLAGE

• BUSINESS PARK •

2722 W. BITTERS RD  
SAN ANTONIO, TX 78248

## ▪ AMENITIES - PHOTOS ▪



*Tenant Lounge*



*Move-in Ready Suite*



*Conference Room*



*Outdoor Patio & Deck*

CONTACT: Shawn Gulley  
210.805.3333  
shawn@worthsa.com

Rob Gish  
210.805.3370  
rob@worthsa.com

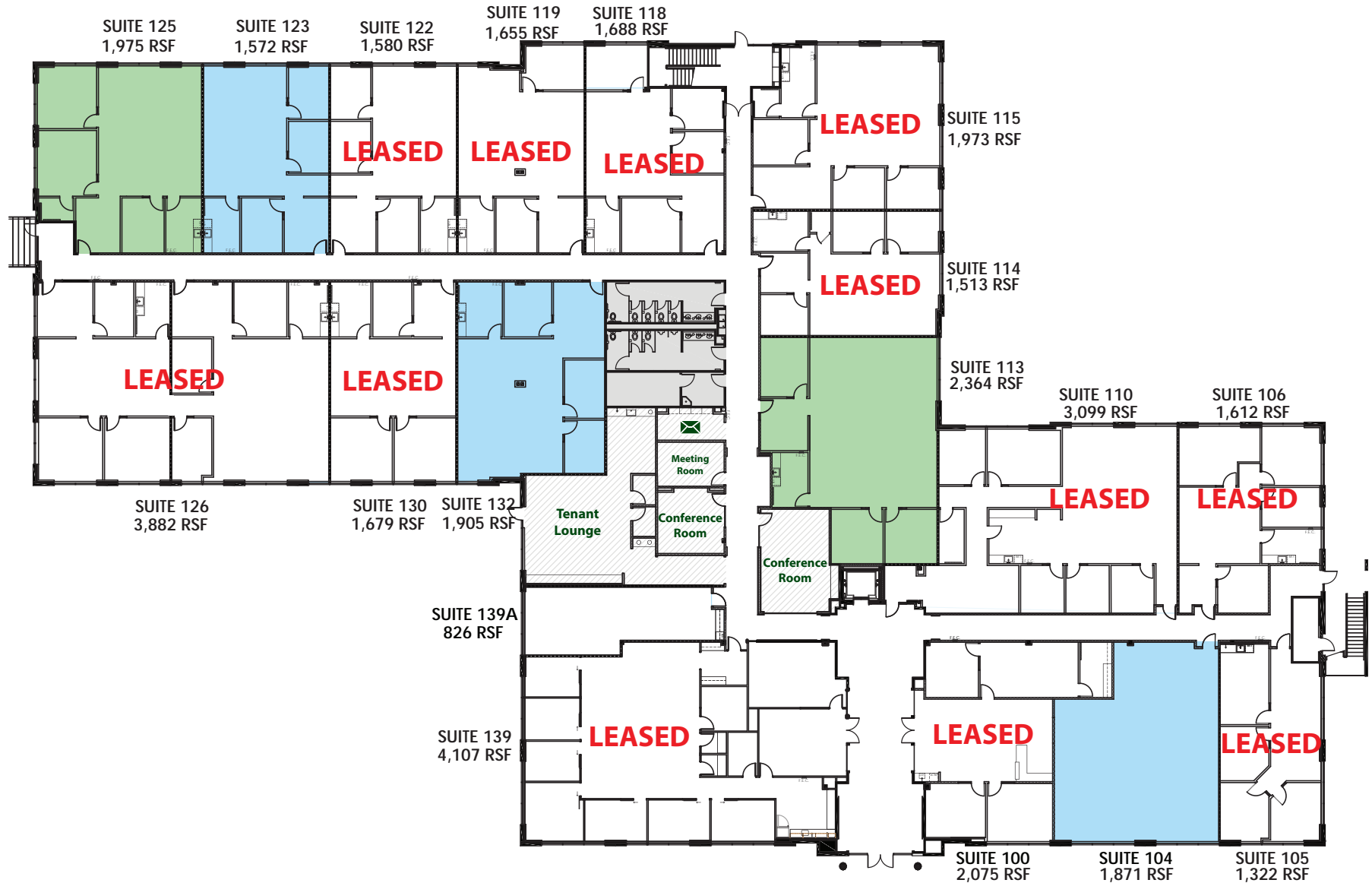




**INWOOD VILLAGE**  
• BUSINESS PARK •

2722 W. BITTERS RD  
SAN ANTONIO, TX 78248

## ▪ 1ST FLOOR MOVE-IN READY SUITES ▪



**CONTACT:** Shawn Gulley  
210.805.3333  
shawn@worthsa.com

Rob Gish  
210.805.3370  
rob@worthsa.com

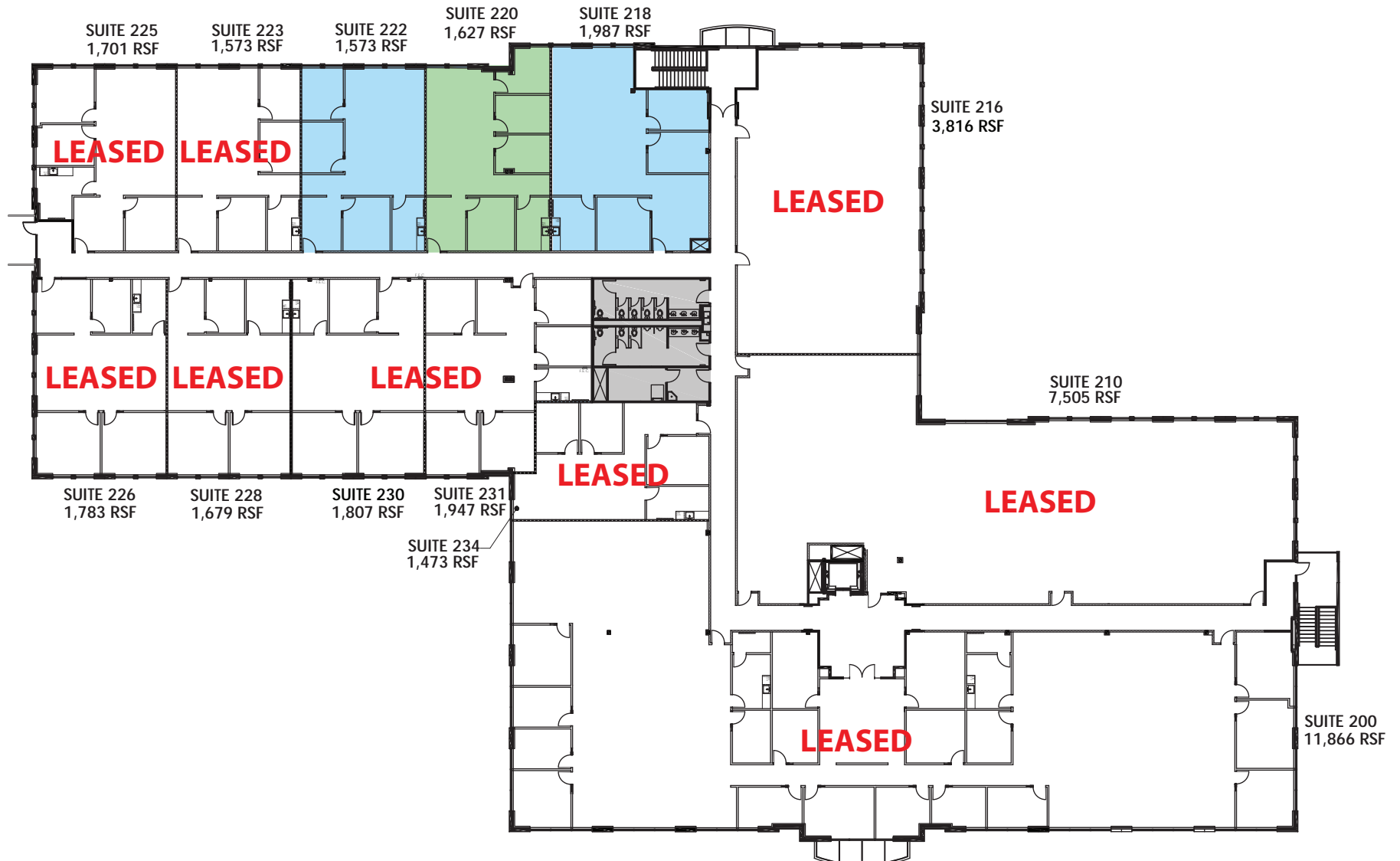




**INWOOD VILLAGE**  
• BUSINESS PARK •

2722 W. BITTERS RD  
SAN ANTONIO, TX 78248

## ▪ 2ND FLOOR MOVE-IN READY SUITES ▪



**CONTACT:** Shawn Gulley  
210.805.3333  
shawn@worthsa.com

Rob Gish  
210.805.3370  
rob@worthsa.com







# INWOOD VILLAGE

• BUSINESS PARK •

2722 W. BITTERS RD  
SAN ANTONIO, TX 78248

## ▪ SITE PLAN ▪



CONTACT:

Shawn Gulley  
210.805.3333  
shawn@worthsa.com

Rob Gish  
210.805.3370  
rob@worthsa.com







**INWOOD VILLAGE**  
• BUSINESS PARK •

2722 W. BITTERS RD  
SAN ANTONIO, TX 78248

▪ AERIAL SITE PLAN ▪

Loop 1604

Bitters Rd.

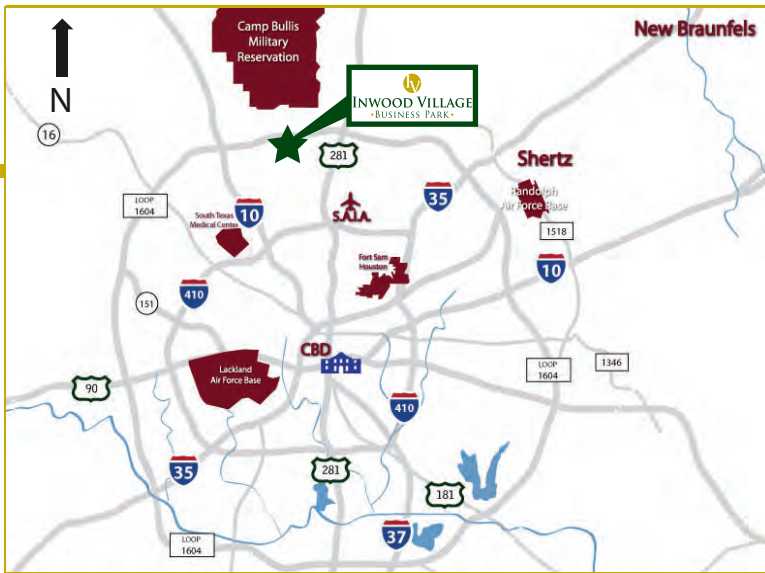


Aerial Site Plan 

CONTACT: Shawn Gulley  
210.805.3333  
shawn@worthsa.com

Rob Gish  
210.805.3370  
robgs@worthsa.com

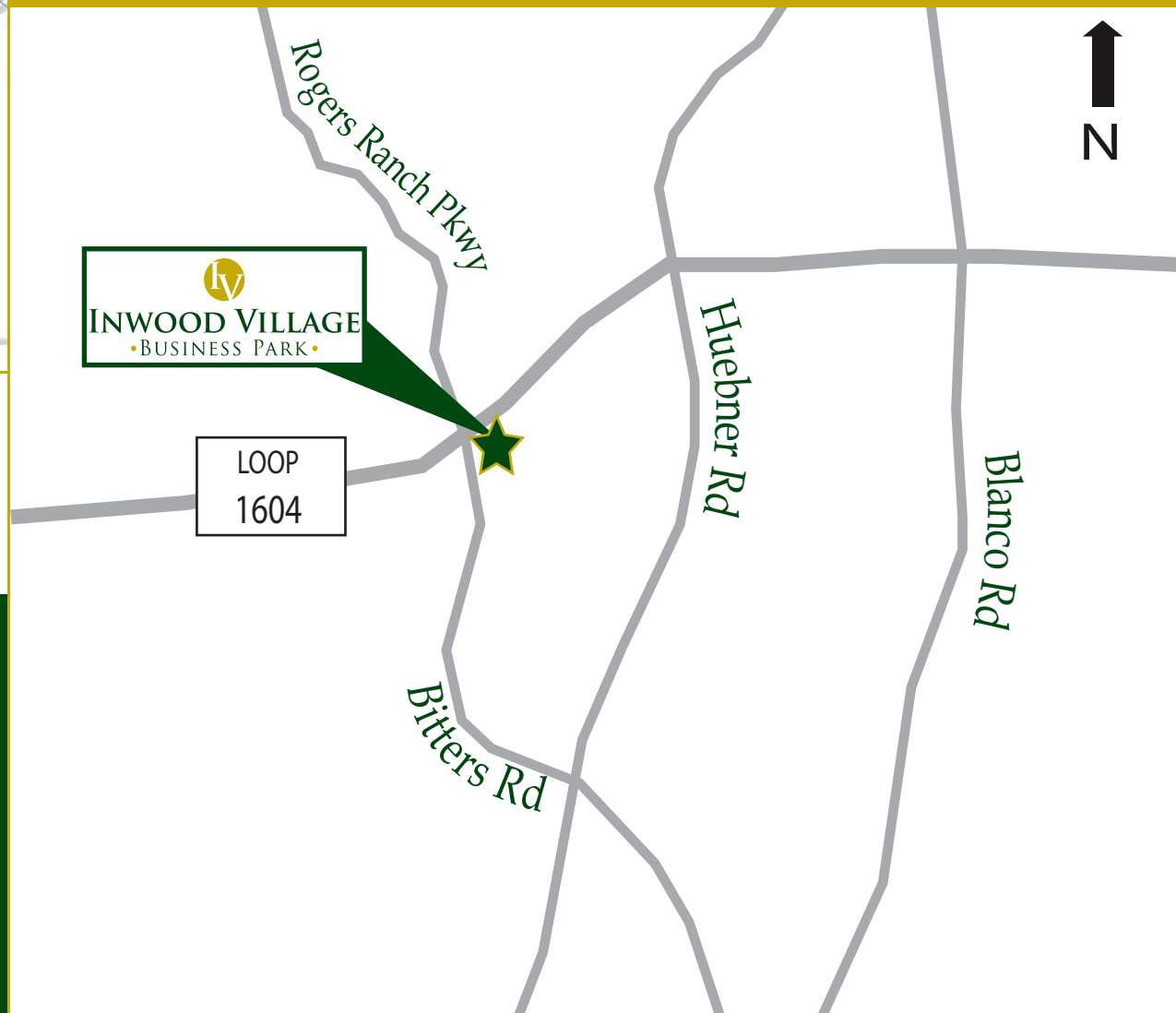




## INWOOD VILLAGE • BUSINESS PARK •

- Located at the corner of Bitters Road and Loop 1604 in the Far North Central Submarket of San Antonio
- A part of the Heritage Oaks Business Park, which at Build Out will Feature Five Office Buildings totaling around 450,000 SF of Space
- Less than 11 miles from San Antonio International Airport
- Close to executive housing, excellent schools, hotels, hospitals and plenty of retail, restaurant and entertainment amenities

## ▪ LOCATION ANALYSIS ▪



CONTACT:

Shawn Gulley  
210.805.3333  
shawn@worthsa.com

Rob Gish  
210.805.3370  
rob@worthsa.com







**INWOOD VILLAGE**  
• BUSINESS PARK •

2722 W. BITTERS RD  
SAN ANTONIO, TX 78248

▪ AERIAL PHOTO ▪



CONTACT:

Shawn Gulley  
210.805.3333  
shawn@worthsa.com

Rob Gish  
210.805.3370  
robgs@worthsa.com





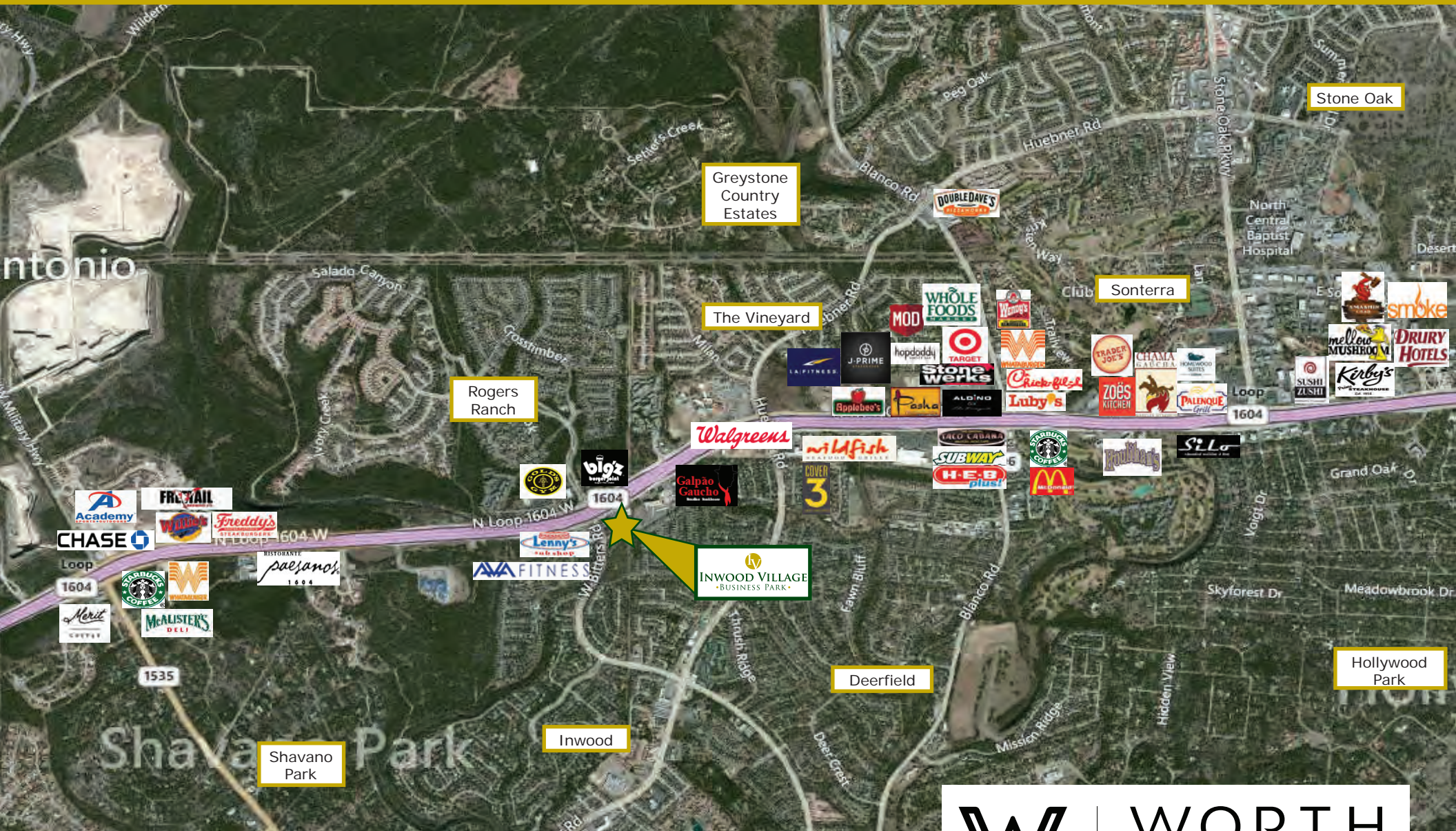


# INWOOD VILLAGE

• BUSINESS PARK •

2722 W. BITTERS RD  
SAN ANTONIO, TX 78248

## • AMENITY MAP •



**CONTACT:** Shawn Gulley  
210.805.3333  
shawn@worthsa.com

Rob Gish  
210.805.3370  
rob@worthsa.com



**WORTH**  
& ASSOCIATES

7373 Broadway, Suite 201 • San Antonio, TX 78209  
210.822.5220 • Fax 210.822.5224 • [www.worthsa.com](http://www.worthsa.com)