

For Lease

Lake Orlando Industrial Park

Orlando, FL 32808



Up to 292,365± sf available

**AVISON
YOUNG**

Lisa Bailey, SIOR

Principal

407.440.6645

lisa.bailey@avisonyoung.com

avisonyoung.com



Introduction

Lake Orlando Industrial Park consists of nine (9) single-story office/flex/warehouse suites with flexible floor plans totaling 292,365± square feet. Located in Orlando’s Northwest submarket, just South of the \$1 Billion Rosemont Arts District Redevelopment Project as well as just North of The Packing District’s 202-acre, \$700 million development project, this location offers close proximity to Downtown Orlando with connectivity to several arterial roadways such as John Young Parkway 423, US 441, State road 408, and Interstate-4.

PROPERTY HIGHLIGHTS

OFFICE/FLEX/WAREHOUSE SPACE

**GRADE LEVEL LOADING:
2’ LOADING & 4’ LOADING**

**OUTSIDE TRACTOR TRAILER STORAGE
AVAILABLE**

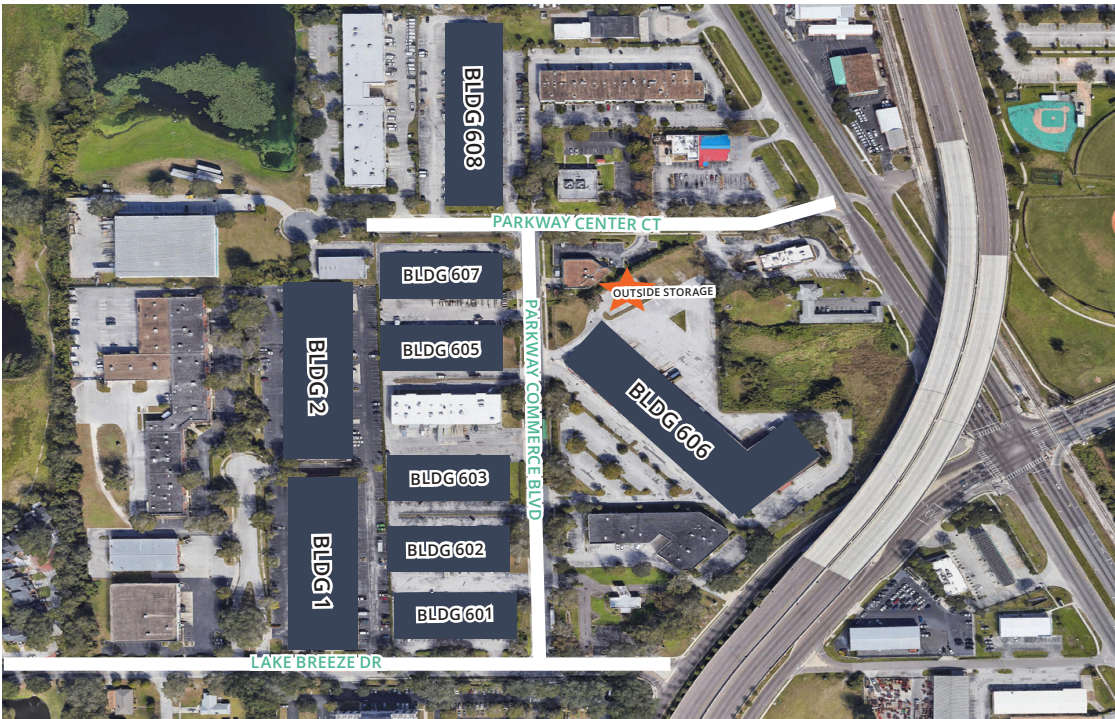
**NEARBY RETAIL AND RESTAURANT
OPTIONS**

OH DOOR SIZE: PARKWAY - 9X10

OH DOOR SIZE: PARK CENTER - 10X12

ZONING: I-P/W, CITY OF ORLANDO

PARKING RATIO: 2.0-2.5/1,000



Nearby Amenities

Lake Orlando Industrial Park

Office/Flex/Warehouse Space For Lease

Lake Breeze Dr/Parkway Commerce Blvd/Parkway Center Ct

Orlando, Florida 32808



**AVISON
YOUNG**

Lisa Bailey, SIOR

Principal

407.440.6645

lisa.bailey@avisonyoung.com

avisonyoung.com

Photos

Lake Orlando Industrial Park

Office/Flex/Warehouse Space For Lease

Lake Breeze Dr/Parkway Commerce Blvd/Parkway Center Ct

Orlando, Florida 32808



**AVISON
YOUNG**

Lisa Bailey, SIOR

Principal

407.440.6645

lisa.bailey@avisonyoung.com

avisonyoung.com

Floorplans

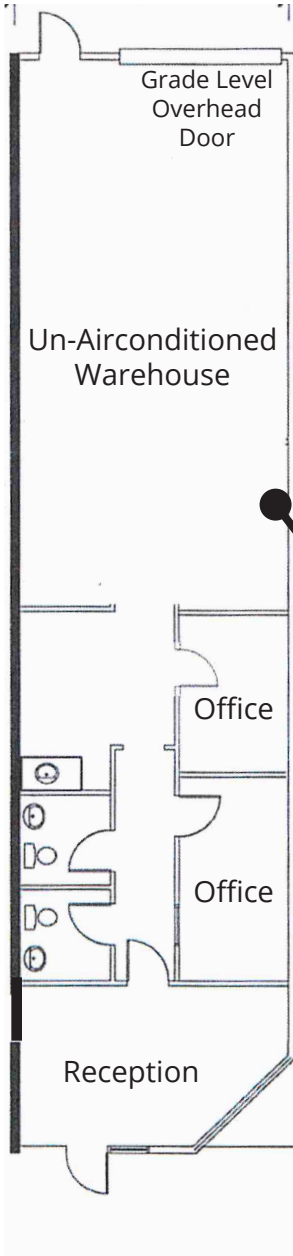
Lake Orlando Industrial Park

Office/Flex/Warehouse Space For Lease

Lake Breeze Dr/Parkway Commerce Blvd/Parkway Center Ct

Orlando, Florida 32808

Building 608 - 3479 Parkway Center Ct | Suite A
1,600± sf
Office/Warehouse/Outside Storage Space



**AVISON
YOUNG**

Lisa Bailey, SIOR

Principal

407.440.6645

lisa.bailey@avisonyoung.com

avisonyoung.com

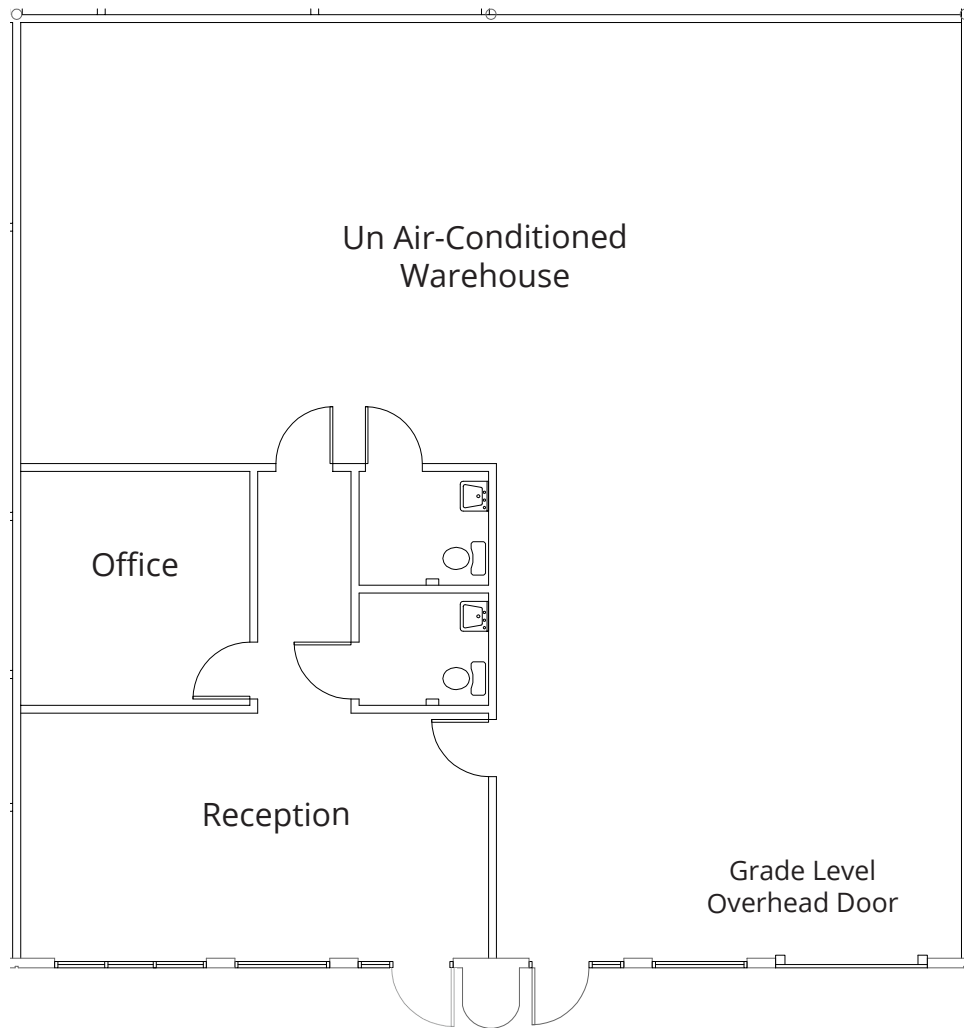
Building 602 - 4434 Parkway Commerce Blvd | Suite H
2,400± sf
Office/Warehouse Space



Building 1 - 4447 Parkway Commerce Blvd

2,500± sf

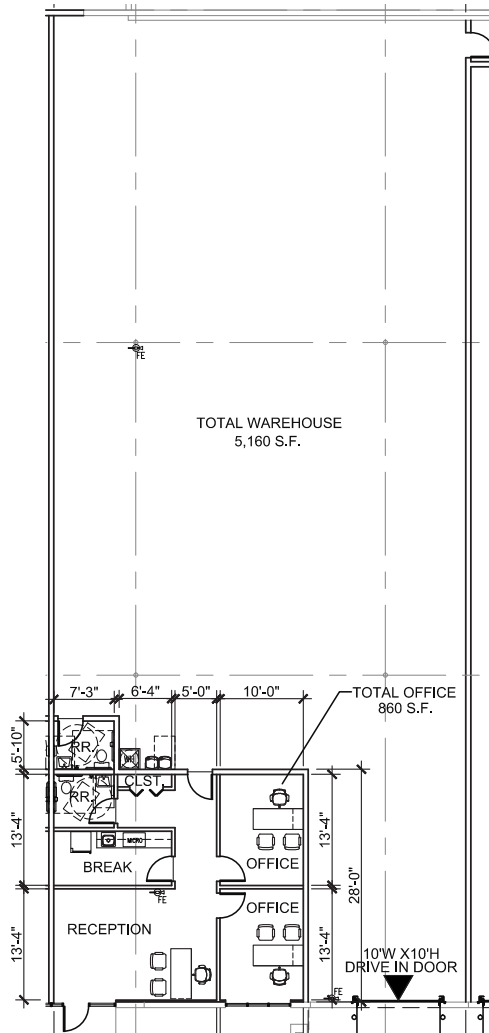
Office/Warehouse Space



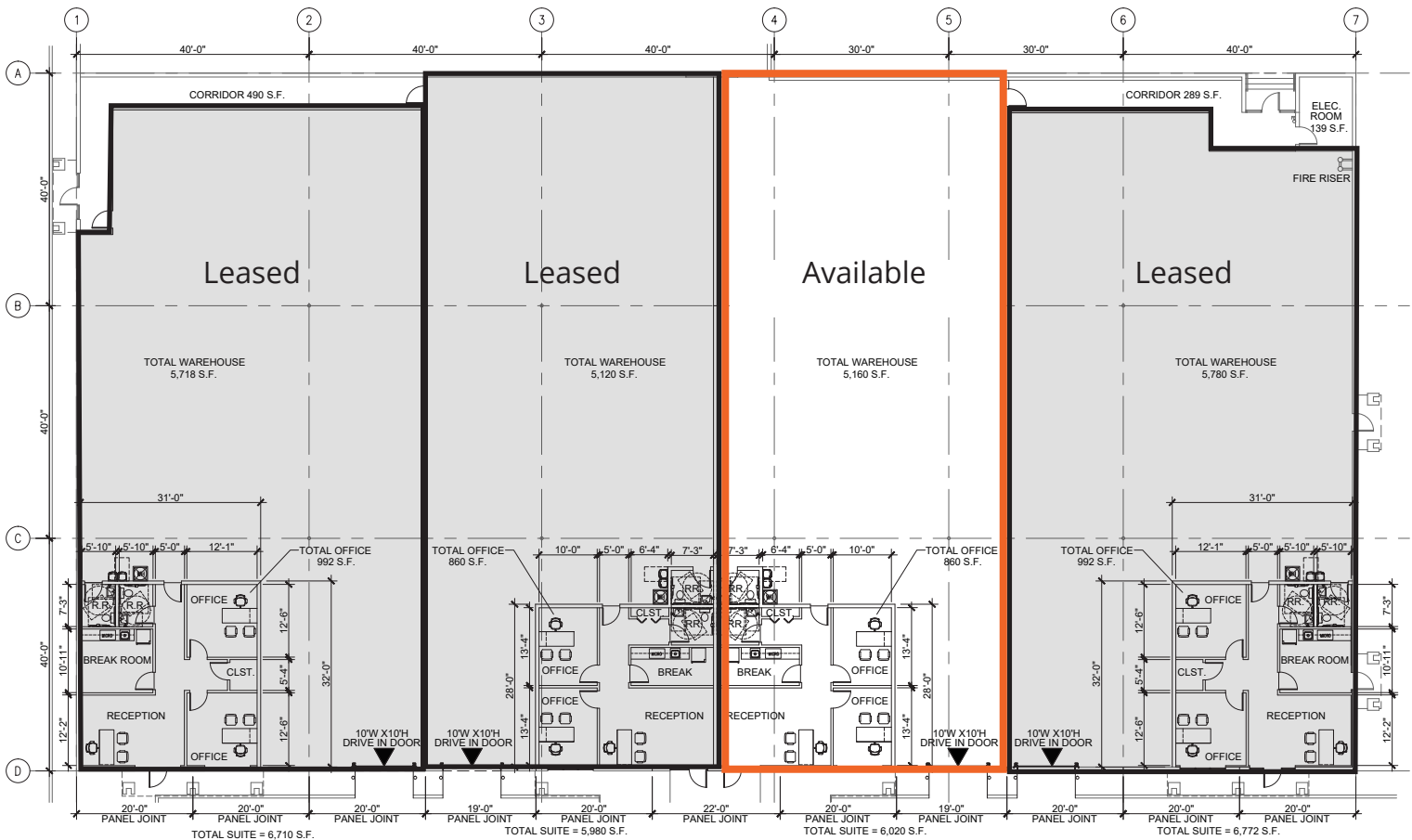
Building 606 - 4501 Parkway Commerce Blvd | Suite 300

6,020± sf

Office/Warehouse Space



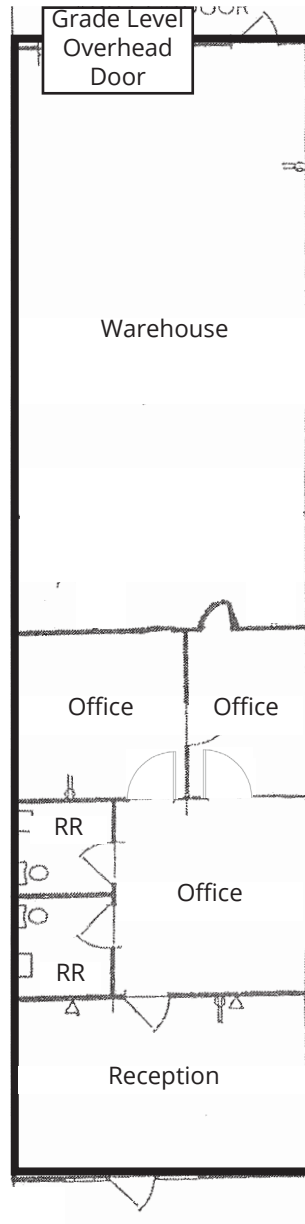
Building 606 - Suite 4501 Proposed Floor Plan



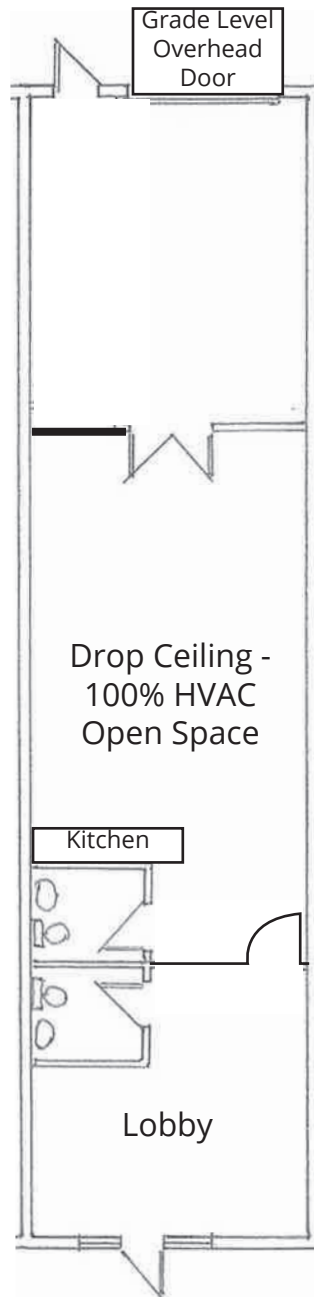
Building 605 - 4708 Parkway Commerce Blvd | Suite D

1,600± sf

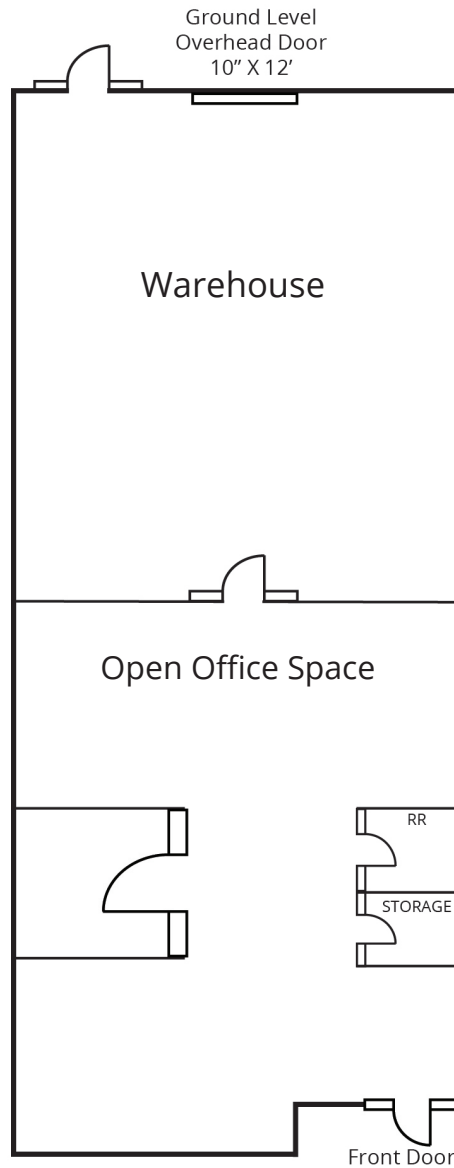
Office/Warehouse Space



Building 605 - 4700 Parkway Commerce Blvd | Suite A
1,600± sf
Office/Warehouse Space



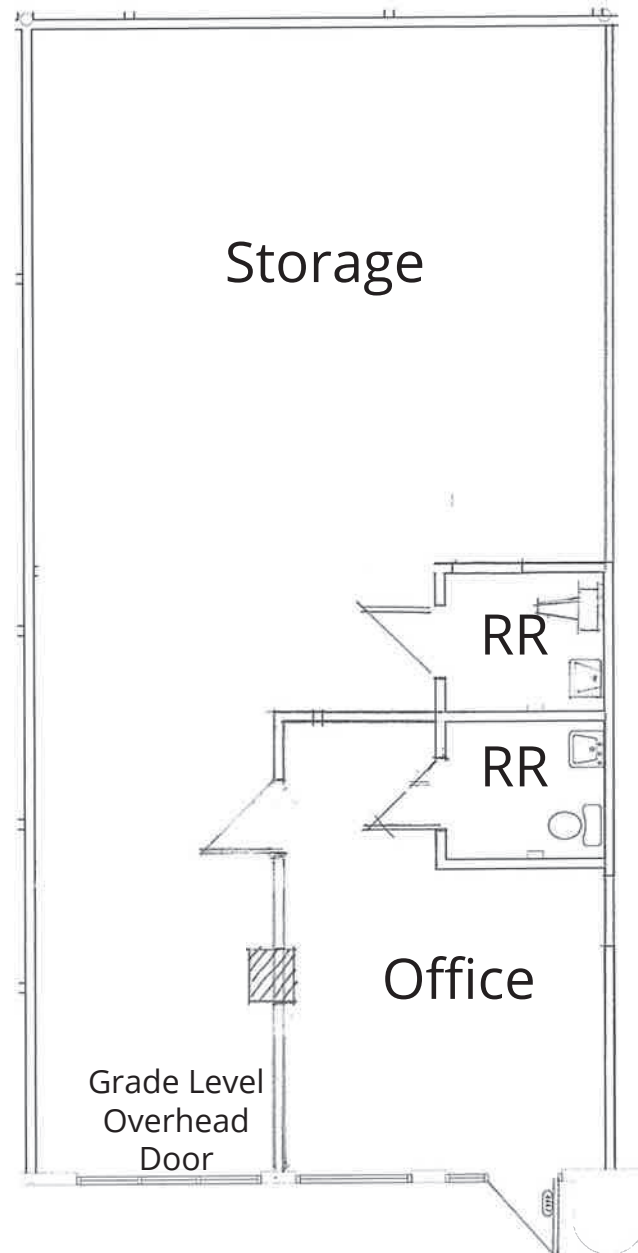
Building 605 - 4710 Parkway Commerce Blvd | Suite E
1,600± sf
Office/Warehouse Space



Building 1 - 4451 Parkway Commerce Blvd

1,250± sf

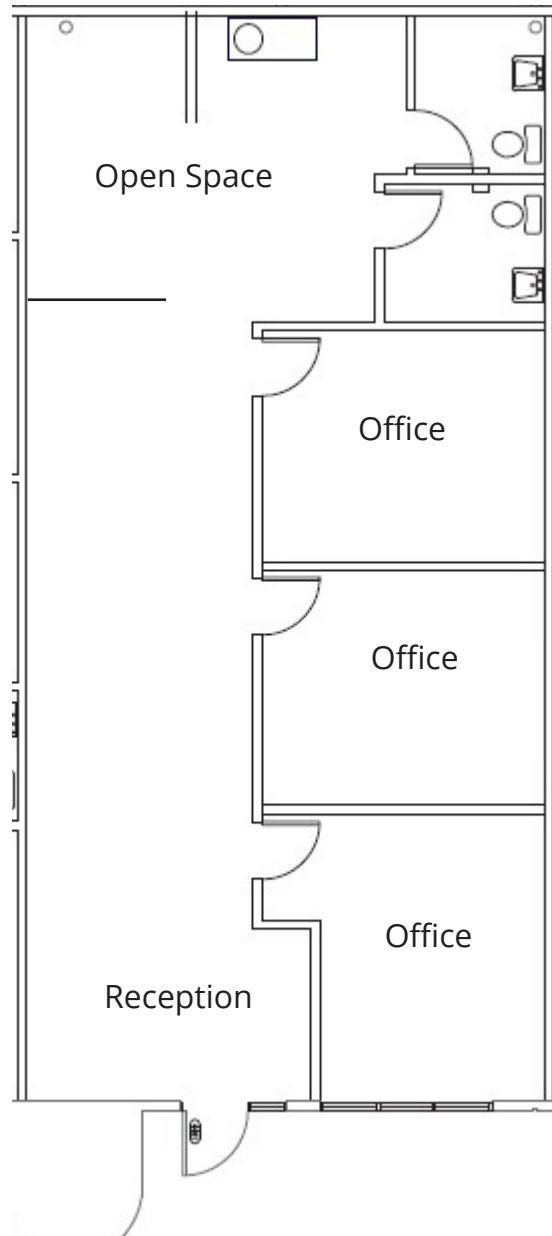
Office/Warehouse Space



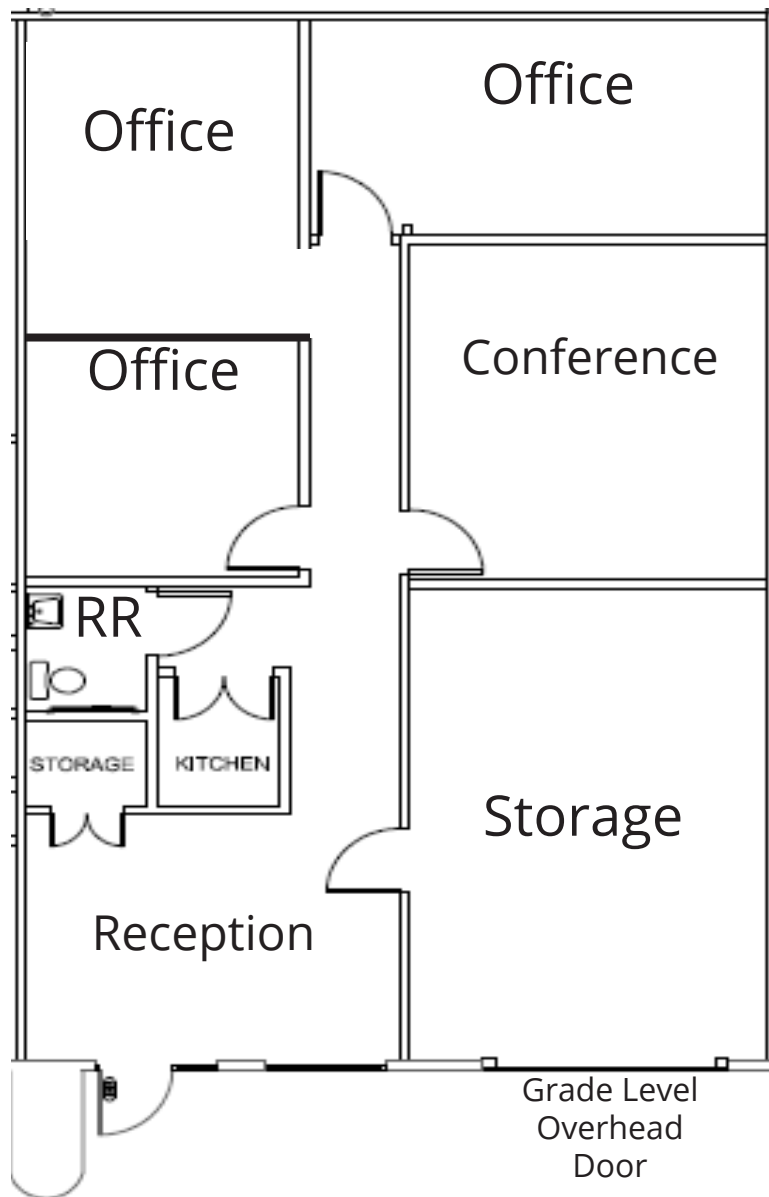
Building 1 - 4461 Parkway Commerce Blvd

1,250± sf

100% Office Space



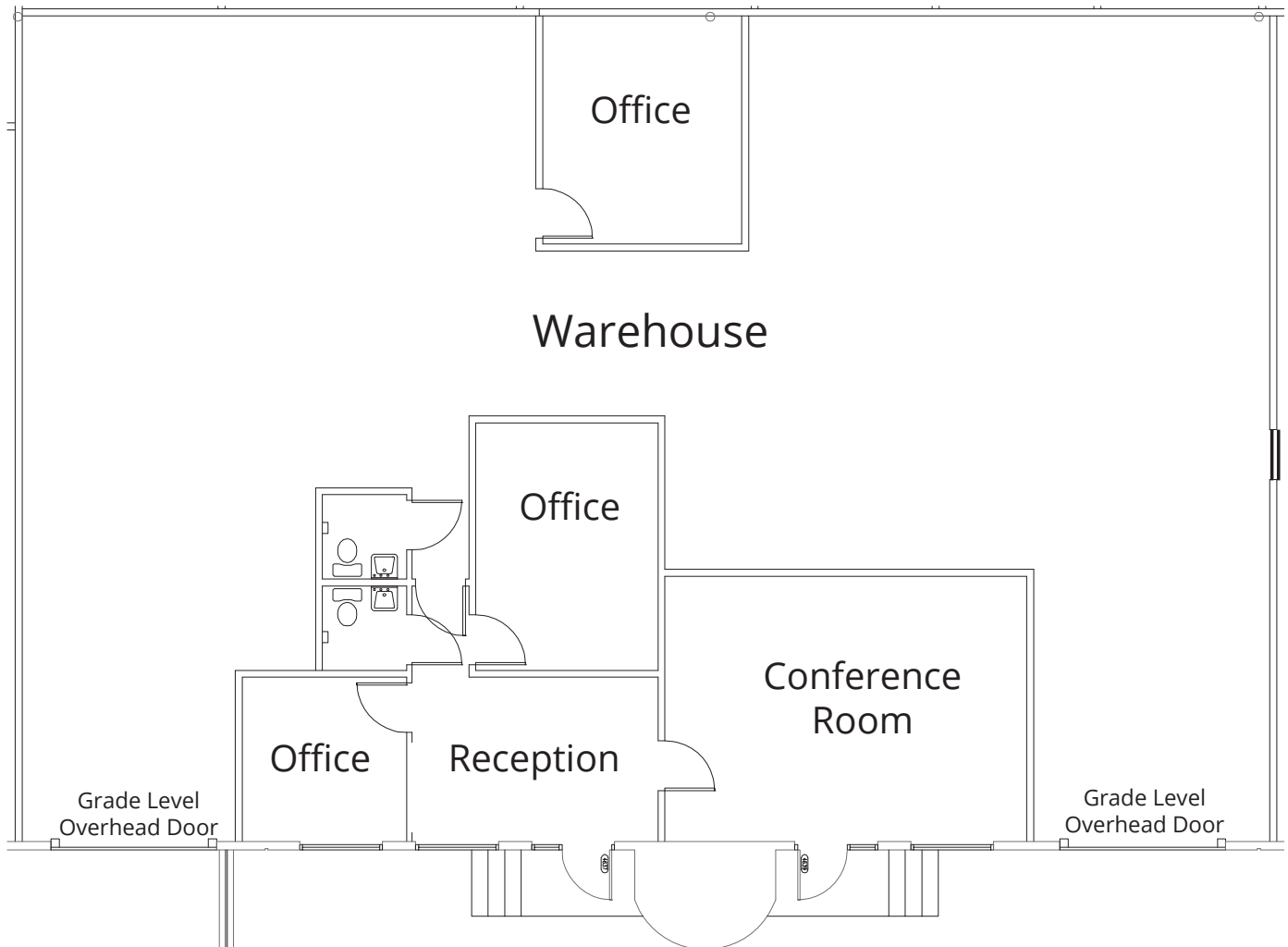
Building 2 - 4597 Parkway Commerce Blvd
1,540± sf
Office/Warehouse Space



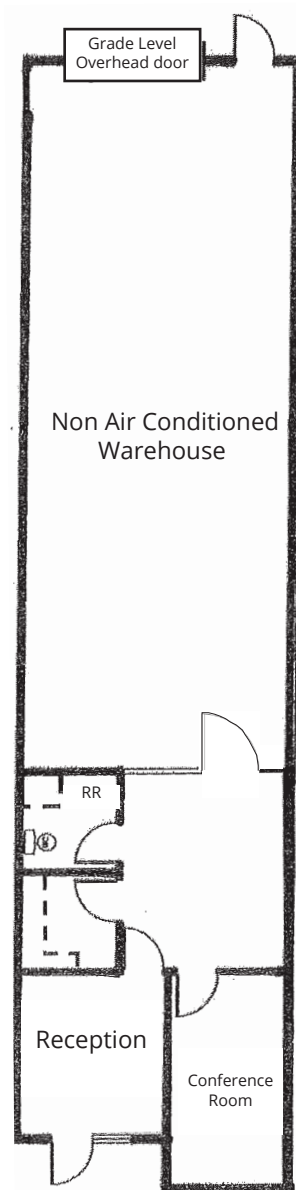
Building 2 - 4637 Parkway Commerce Blvd

3,725± sf

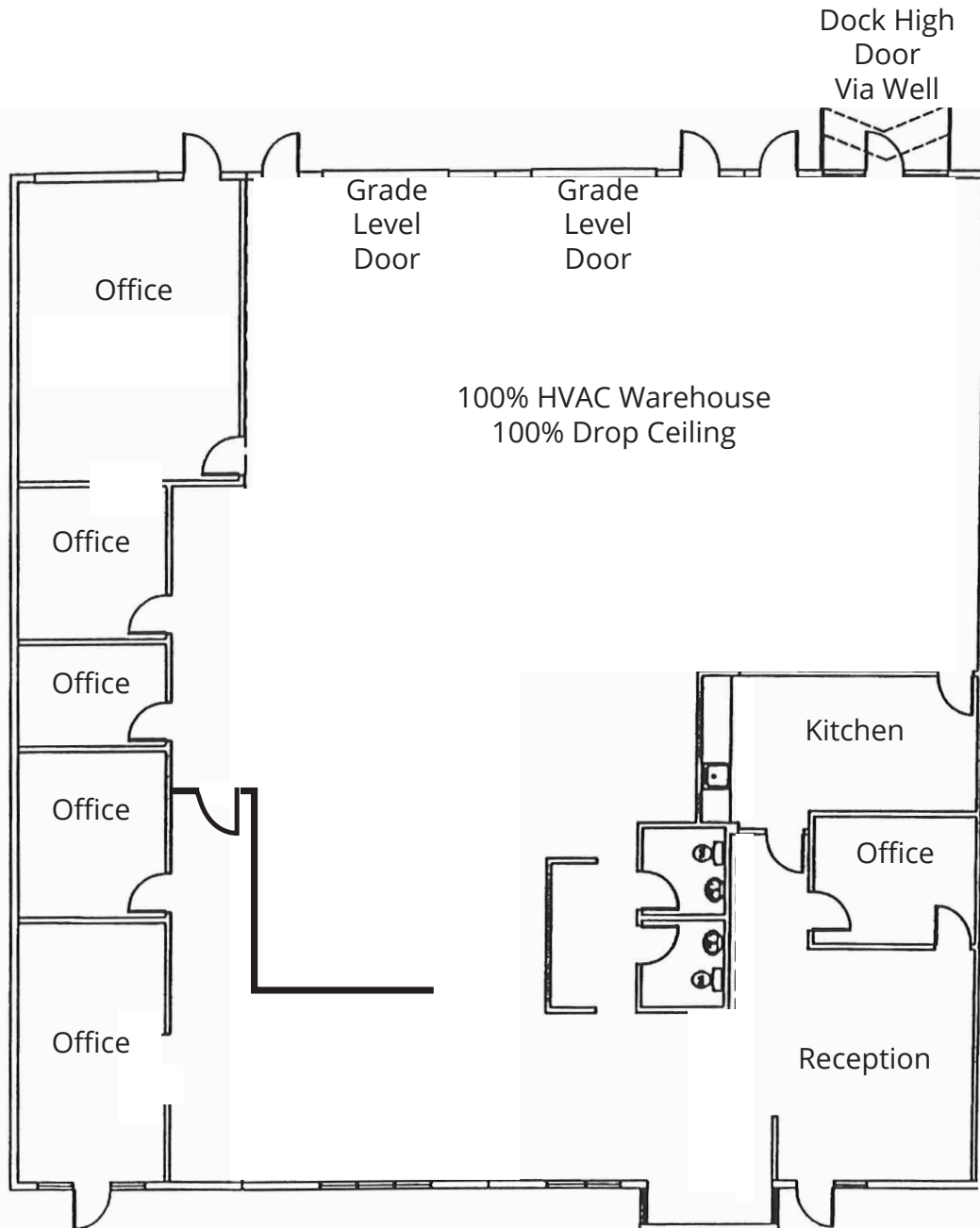
Office/Warehouse Space



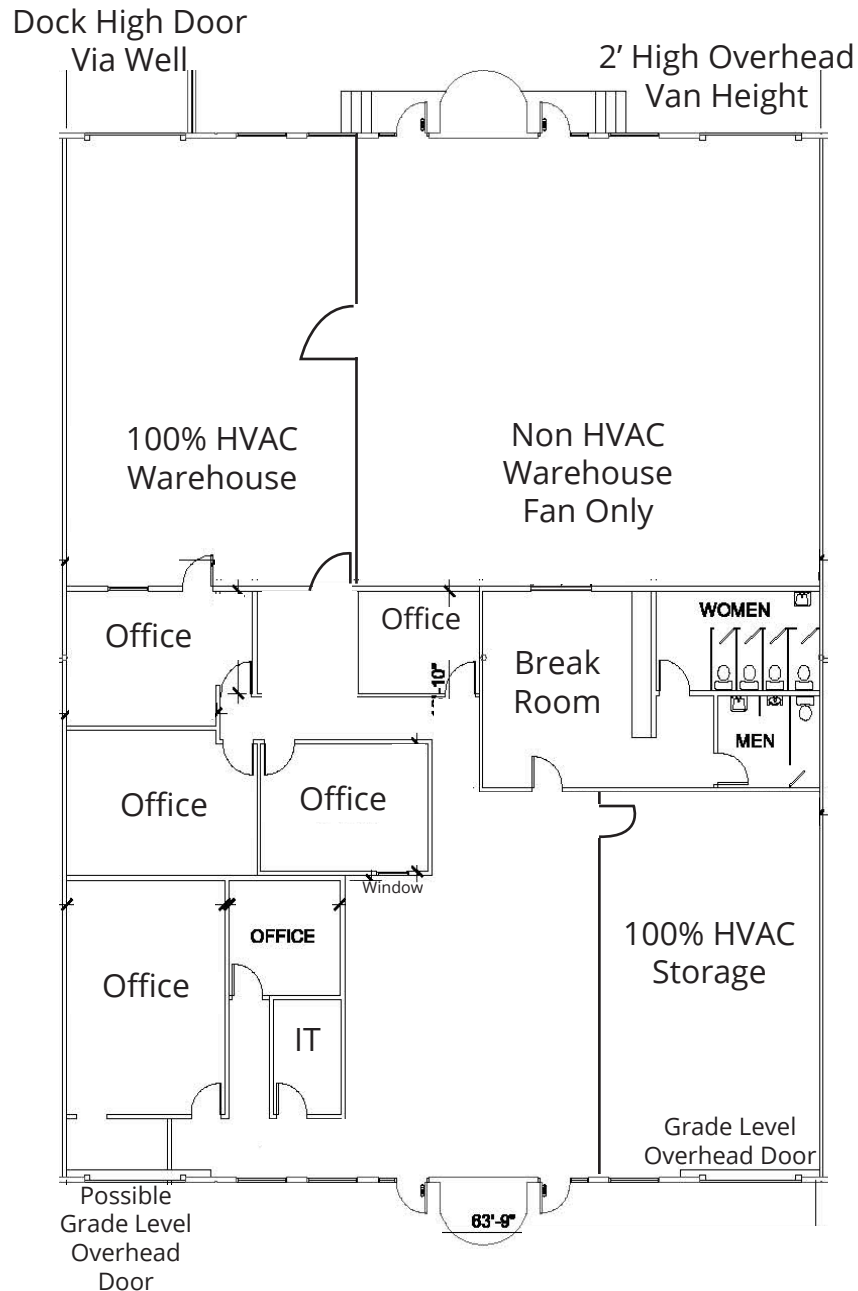
Bldg 608 | 3469 Parkway Center Ct | Suite F
1,600± sf
Office/Warehouse Space



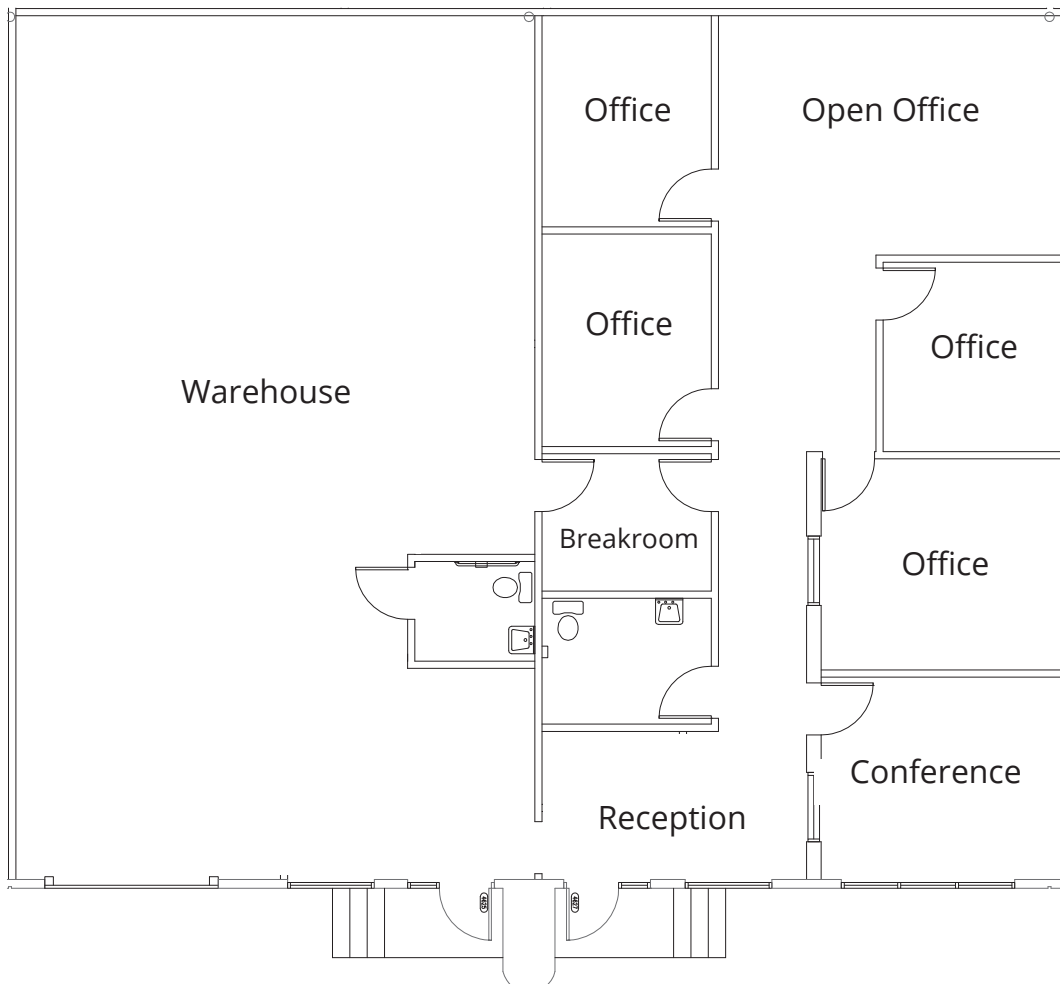
Bldg 608 | 3457-3461 Parkway Center Ct | Suite I-L
6,400± sf
Office/Warehouse Space



Building 2 - 4607 Parkway Commerce Blvd
7,525± sf



Building 2 - 4625 Parkway Commerce Blvd
3,071± sf
Office/Warehouse Space



4611 Parkbreeze Court
1,529± sf
Office/Warehouse Space

