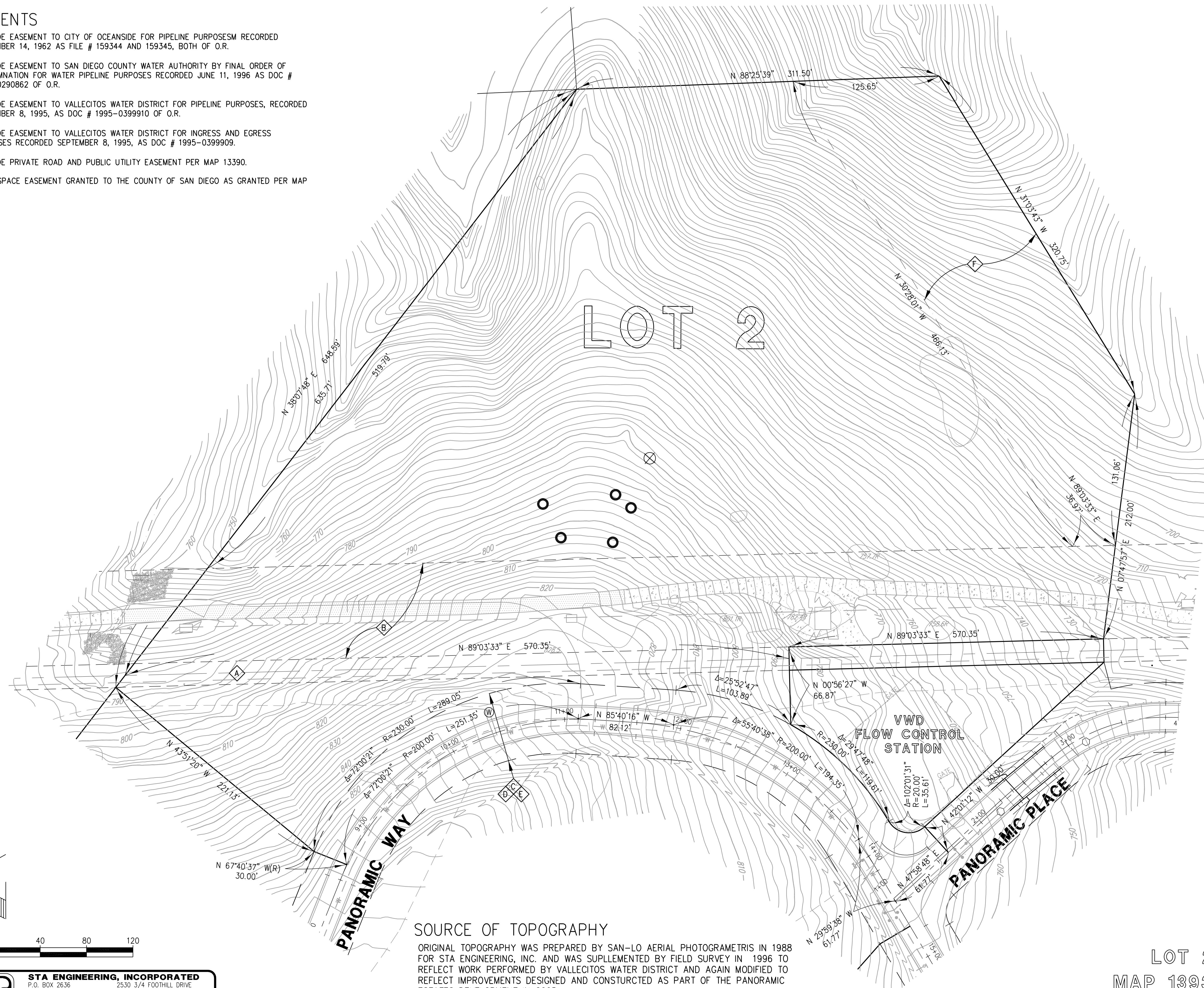


EASEMENTS

- A** 20' WIDE EASEMENT TO CITY OF OCEANSIDE FOR PIPELINE PURPOSES RECORDED SEPTEMBER 14, 1962 AS FILE # 159344 AND 159345, BOTH OF O.R.
- B** 80' WIDE EASEMENT TO SAN DIEGO COUNTY WATER AUTHORITY BY FINAL ORDER OF CONDEMNATION FOR WATER PIPELINE PURPOSES RECORDED JUNE 11, 1996 AS DOC # 1996-0290862 OF O.R.
- C** 60' WIDE EASEMENT TO VALLECITOS WATER DISTRICT FOR PIPELINE PURPOSES, RECORDED SEPTEMBER 8, 1995, AS DOC # 1995-0399910 OF O.R.
- D** 60' WIDE EASEMENT TO VALLECITOS WATER DISTRICT FOR INGRESS AND EGRESS PURPOSES RECORDED SEPTEMBER 8, 1995, AS DOC # 1995-0399909.
- E** 60' WIDE PRIVATE ROAD AND PUBLIC UTILITY EASEMENT PER MAP 13390.
- F** OPEN SPACE EASEMENT GRANTED TO THE COUNTY OF SAN DIEGO AS GRANTED PER MAP 13930.



SEPTIC INFORMATION, 1982 DATA
 ● APPROX. LOCATION TEST HOLE, 50 MIN/INCH AVG
 ⊗ APPROX. LOCATION DEEP HOLE
 LOT ORIGINALLY APPROVED FOR 500 FEET FOR
 FOR 3 BEDROOM RESIDENCE WITH 100% RESERVE
 5' TRENCH WITH 3' OF GRAVEL UNDER LEACH PIPE.
 LAYOUT ON FILE WITH DEH.

AREA
 8.01 ACRES - GROSS
 7.70 ACRES - NET

ADDRESS
 2437 PANORAMIC WAY
 ASSESSOR'S PARCEL NUMBER
 172-112-08

LOT 2 PANORAMIC ESTATES
 MAP 13930, COUNTY OF SAN DIEGO

SOURCE OF TOPOGRAPHY

ORIGINAL TOPOGRAPHY WAS PREPARED BY SAN-LO AERIAL PHOTOGRAMETRIS IN 1988 FOR STA ENGINEERING, INC. AND WAS SUPPLEMENTED BY FIELD SURVEY IN 1996 TO REFLECT WORK PERFORMED BY VALLECITOS WATER DISTRICT AND AGAIN MODIFIED TO REFLECT IMPROVEMENTS DESIGNED AND CONSTRUCTED AS PART OF THE PANORAMIC ESTATES DEVELOPMENT IN 2005.

