



# 132 PEANUT ROAD

## HAMPSTEAD, NORTH CAROLINA

2.91 ACRES OF COMMERCIAL ZONED LAND FOR LEASE



RUSSELL STEWART, SIOR, J.D.  
rstewart@lee-associates.com  
O: 919.576.2506  
C: 919.909.9779

 **LEE &  
ASSOCIATES**  
COMMERCIAL REAL ESTATE SERVICES  
RALEIGH • DURHAM • WILMINGTON

All information furnished regarding property for sale, rental or financing is from sources deemed reliable, but no warranty or representation is made to the accuracy thereof and same is submitted to errors, omissions, change of price, rental or other conditions prior to sale, lease or financing or withdrawal without notice. No liability of any kind is to be imposed on the broker herein.



# PROPERTY SUMMARY

## OVERVIEW

±2.91 acres of commercially zoned land available for lease. Situated in a high-visibility corridor just off US Highway 17 and NC-210, this location presents a rare opportunity in one of the most rapidly growing and affluent submarkets in the Wilmington metro area.

## LOCATION DESCRIPTION:

Located near the intersection of US Hwy 17 and NC-210 in Hampstead, a coastal community in Pender County. The property is within a 20 minute drive of Wilmington and 30 minutes of Jacksonville.

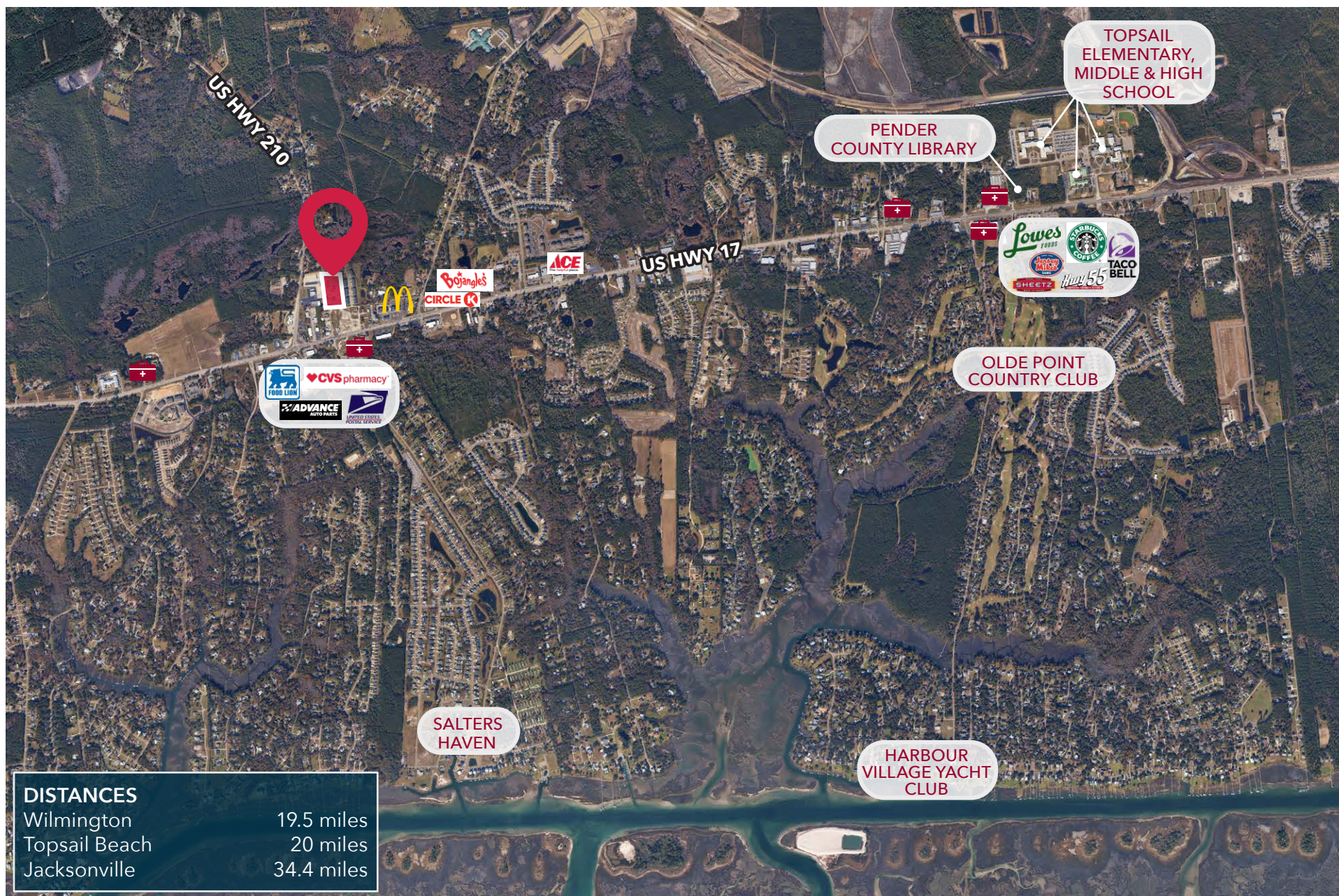
## HIGHLIGHTS

- » ±2.91 acres (fenced)
- » Existing Structures: Small house (potential office), shed
- » PIN#: 3282-87-6997-0000
- » Former Use: Pool Company
- » Zoning: General Business (GB) - Pender County
- » Permitted Uses: Allows for boat and motor vehicle sales, repair, maintenance, and storage, as well as retail, professional offices, fitness/recreation facilities, and a wide range of other commercial uses
- » Ideal for: Service-oriented businesses, contractor operations, or storage yard users seeking high-visibility frontage and utility-ready infrastructure
- » Proximity to dense residential growth in Hampstead and Topsail school district
- » Strong traffic visibility due to access from US Hwy 17
- » **Lease Rate:** \$15,000/month NNN





# AREA OVERVIEW



2.91 ACRES FOR LEASE | 132 PEANUT RD | HAMPSTEAD, NC 28443



# DEMOGRAPHICS

	1 MILE	3 MILES	5 MILES
Population (2025)	1,321	12,350	24,474
2030 Projected Population	1,500	13,848	27,393
Number of Households	380	4,691	9,356
Daytime Population	1,461	10,612	19,146
Median Age	41.0	42.2	42.6
Median Household Income	\$124,555	\$111,969	\$104,859
Median Home Value	\$443,333	\$429,712	\$428,951
Bachelor's Degree or Higher	39.7%	43.0%	45.0%



**NO. 1**  
SOUTH'S  
BEST CITY ON  
THE RISE  
SOUTHERN LIVING, 2024

**NO. 1**  
FASTEST GROWING  
METRO AREA IN NC  
FROM 2020-2024  
(#7 IN THE U.S.)  
U.S. CENSUS BUREAU, 2025

**NO. 2**  
AMERICA'S  
TOP STATE FOR  
BUSINESS  
CNBC, 2024



**RUSSELL STEWART, SIOR, J.D.**

*Vice President, Principal*

O: 919.576.2506

C: 919.909.9779

[rstewart@lee-associates.com](mailto:rstewart@lee-associates.com)

100 Walnut Street | Cary, NC 27511 | 919.576.2500 | [lee-associates.com/raleigh](http://lee-associates.com/raleigh)

All information furnished regarding property for sale, rental or financing is from sources deemed reliable, but no warranty or representation is made to the accuracy thereof and same is submitted to errors, omissions, change of price, rental or other conditions prior to sale, lease or financing or withdrawal without notice. No liability of any kind is to be imposed on the broker herein.

 **LEE &  
ASSOCIATES**  
COMMERCIAL REAL ESTATE SERVICES  
RALEIGH • DURHAM • WILMINGTON