

7830 West 71st Street, Bridgeview, IL

- 8,000 AMPS OF POWER
- NEWLY RENOVATED



ML REALTY  
PARTNERS

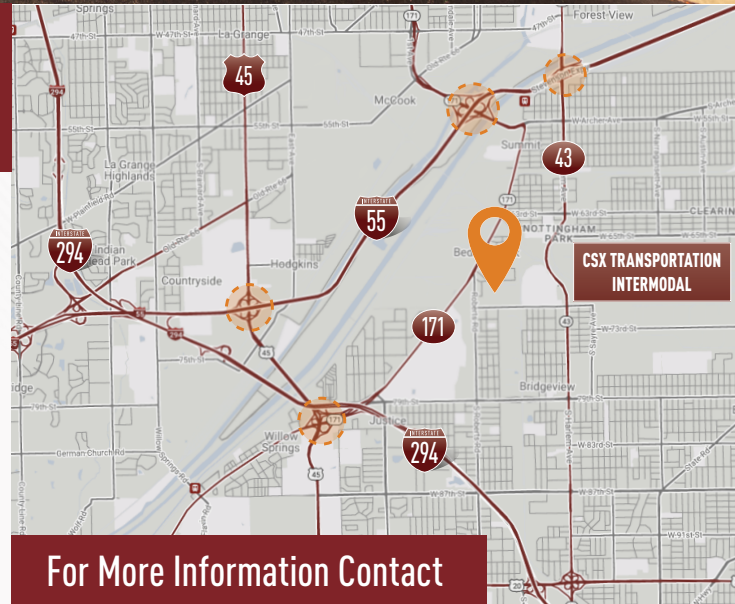
±184,017 SF AVAILABLE

### Building Specifications

Building Size:	217,873 SF
Available:	184,017 SF
Existing Office:	16,706 SF
Clear Height:	22'-25' Clear
Loading:	21 Exterior Truck Docks
Drive In Doors:	1
Column Spacing:	39' X 40' Typical
Power:	8,000 Amps, 277/480 Volts, 3-Phase (Two 4,000 Amp Services)
Car Parking:	±124 Spaces
Trailer Parking:	39
Sprinkler:	Wet
Rail:	IHB

### Building Features

- › On-site trailer parking available
- › Office remodel includes new ceiling, paint, and flooring
- › Great manufacturing facility with heavy power
- › Quick access to I-55 and I-294
- › Proximity to rail yards
  - BNSF - Willow Springs
  - BNSF - Corwith
  - CSX - Bedford Park



For More Information Contact

**NAI Hiffman**  
Commercial Real Estate Services, Worldwide

**HIFFMAN**  
NATIONAL

**STEVE CONNOLLY**

630-693-0642

sconnolly@hiffman.com

**CHRIS GARY**

630-639-0694

cgary@hiffman.com

Owner:

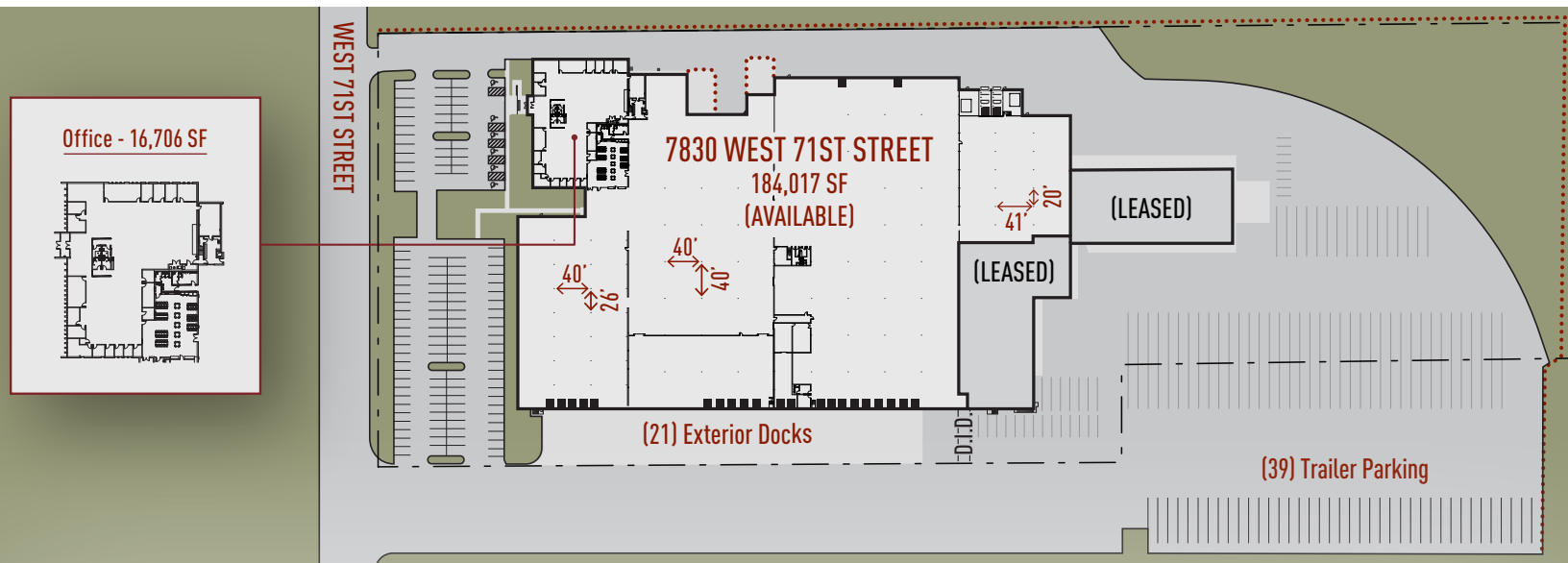
ML Realty Partners \ \ One Pierce Place, Suite 450, Itasca, Illinois 60143 \ \ 630-250-2900

Information contained herein is subject to change and verification, and no liability for errors or omissions is assumed. © 2024 All Rights Reserved. ML Realty Partners

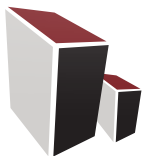
# 7830 West 71st Street, Bridgeview, IL



## Plan



NORTH →



**ML REALTY**  
PARTNERS

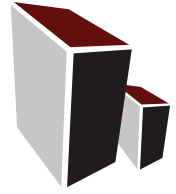
Owner:

ML Realty Partners \ \ One Pierce Place, Suite 450, Itasca, Illinois 60143 \ \ 630-250-2900

Information contained herein is subject to change and verification, and no liability for errors or omissions is assumed. © 2024 All Rights Reserved. ML Realty Partners

7830 West 71st Street, Bridgeview, IL

# INTERIOR RENOVATIONS



ML REALTY  
PARTNERS

