

7034 BLACK HORSE PIKE

Pleasantville, NJ 08232



FOR LEASE



RETAIL / FLEX



7,000-10,000 SF



PROPERTY DESCRIPTION

- Situated on heavily trafficked Black Horse Pike
- 1.8 Miles from the AC Expressway
- 10' - 14' Clear Heights
- One (1) oversized drive in door (12'X12')
- Great visibility and signage
- Over 1,000 Amps of power
- Ideal for Showroom or Home Service businesses

FOR MORE INFORMATION

Sandro Randazzo



856.724.4256



sandro.randazzo@naimertz.com

NAI MERTZ DISCLAIMER: NO WARRANTY OR REPRESENTATION, EXPRESS OR IMPLIED, IS MADE AS TO THE ACCURACY OF THE INFORMATION CONTAINED HEREIN, AND THE SAME IS SUBMITTED SUBJECT TO ERRORS, OMISSIONS, CHANGE OF PRICE, RENTAL OR OTHER CONDITIONS, PRIOR SALE, LEASE OR FINANCING, OR WITHDRAWAL WITHOUT NOTICE, AND OF ANY SPECIAL LISTING CONDITIONS IMPOSED BY OUR PRINCIPALS NO WARRANTIES OR REPRESENTATIONS ARE MADE AS TO THE CONDITION OF THE PROPERTY OR ANY HAZARDS CONTAINED THEREIN ARE ANY TO BE IMPLIED. OUTLINES ARE APPROXIMATE AND SHOWN ONLY TO IDENTIFY THE PARCEL IN CONSIDERATION.

NAI Mertz



NAI Mertz | 21 Roland Avenue
Mount Laurel, NJ 08054

856.234.9600 | naimertz.com



7034 BLACK HORSE PIKE

Pleasantville, NJ 08232



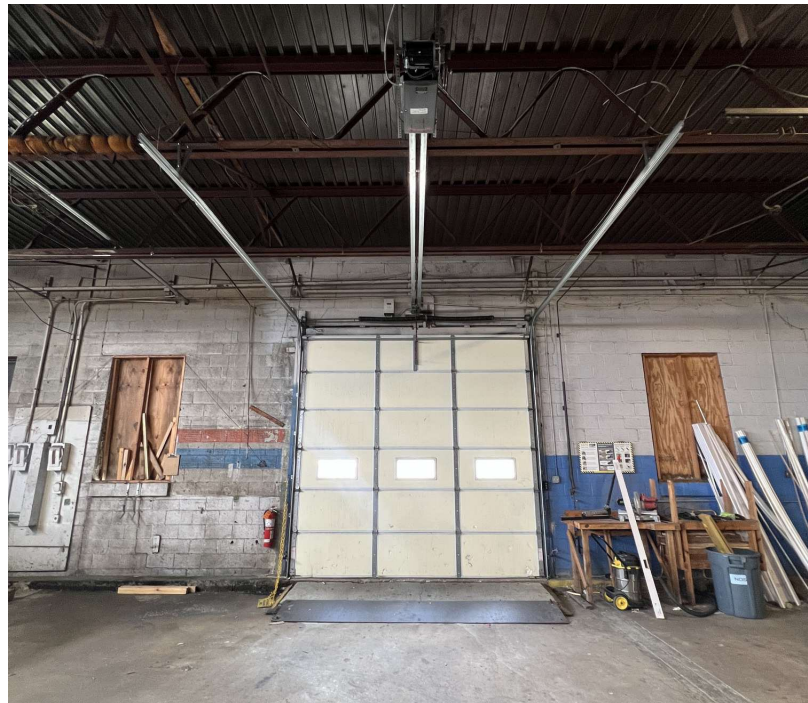
FOR LEASE



RETAIL / FLEX



7,000-10,000 SF



FOR MORE INFORMATION

Sandro Randazzo

☎ 856.724.4256

✉ sandro.randazzo@naimertz.com

NAI MERTZ DISCLAIMER: NO WARRANTY OR REPRESENTATION, EXPRESS OR IMPLIED, IS MADE AS TO THE ACCURACY OF THE INFORMATION CONTAINED HEREIN, AND THE SAME IS SUBMITTED SUBJECT TO ERRORS, OMISSIONS, CHANGE OF PRICE, RENTAL OR OTHER CONDITIONS, PRIOR SALE, LEASE OR FINANCING, OR WITHDRAWAL WITHOUT NOTICE, AND OF ANY SPECIAL LISTING CONDITIONS IMPOSED BY OUR PRINCIPALS NO WARRANTIES OR REPRESENTATIONS ARE MADE AS TO THE CONDITION OF THE PROPERTY OR ANY HAZARDS CONTAINED THEREIN ARE ANY TO BE IMPLIED. OUTLINES ARE APPROXIMATE AND SHOWN ONLY TO IDENTIFY THE PARCEL IN CONSIDERATION.

NAI Mertz



NAI Mertz | 21 Roland Avenue
Mount Laurel, NJ 08054

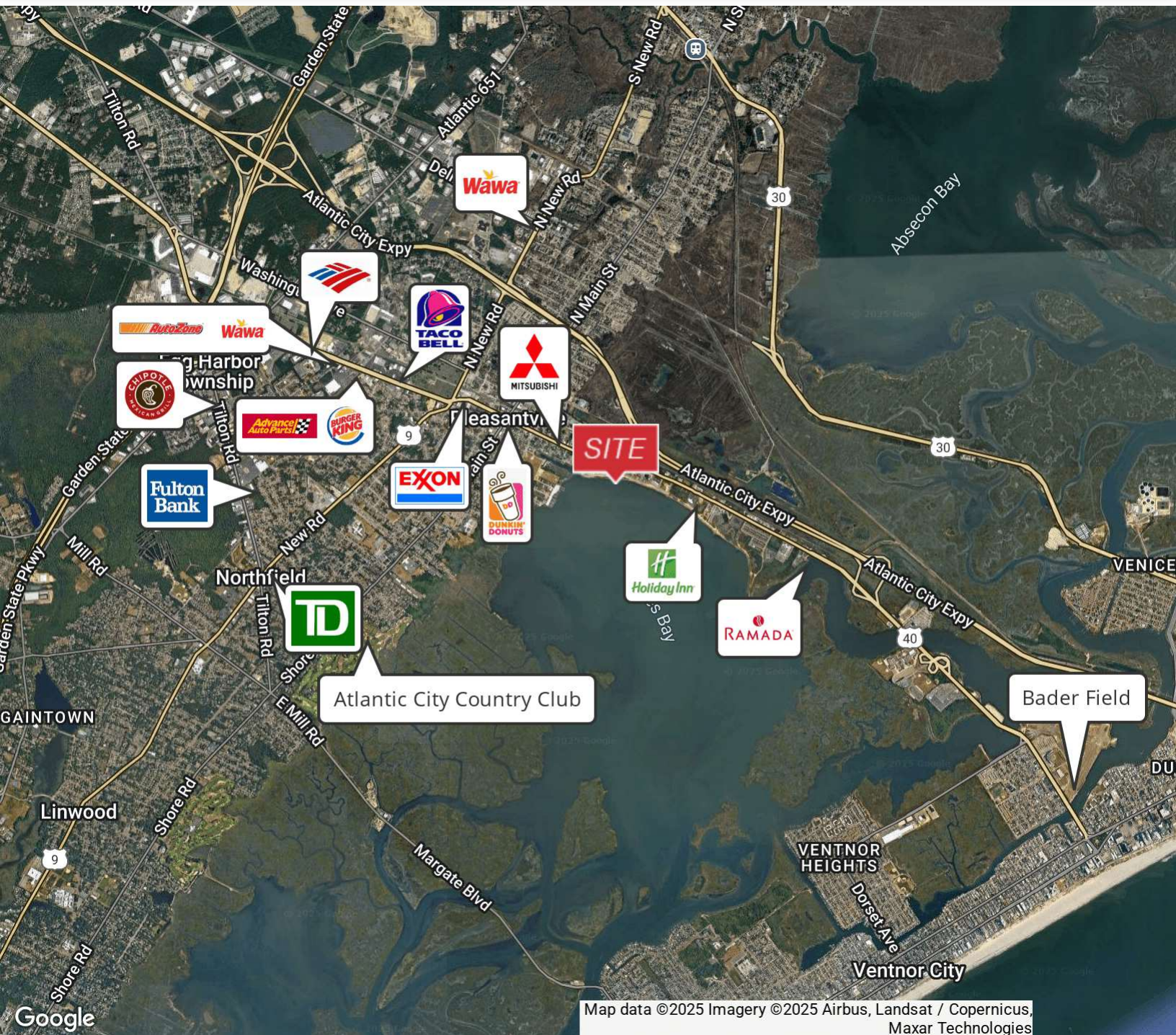
856.234.9600 | naimertz.com



7034 BLACK HORSE PIKE

Pleasantville, NJ 08232


-  FOR LEASE
-  RETAIL / FLEX
-  7,000-10,000 SF



FOR MORE INFORMATION


Sandro Randazzo

 856.724.4256

 sandro.randazzo@naimertz.com

NAI MERTZ DISCLAIMER: NO WARRANTY OR REPRESENTATION, EXPRESS OR IMPLIED, IS MADE AS TO THE ACCURACY OF THE INFORMATION CONTAINED HEREIN, AND THE SAME IS SUBMITTED SUBJECT TO ERRORS, OMISSIONS, CHANGE OF PRICE, RENTAL OR OTHER CONDITIONS, PRIOR SALE, LEASE OR FINANCING, OR WITHDRAWAL WITHOUT NOTICE, AND OF ANY SPECIAL LISTING CONDITIONS IMPOSED BY OUR PRINCIPALS NO WARRANTIES OR REPRESENTATIONS ARE MADE AS TO THE CONDITION OF THE PROPERTY OR ANY HAZARDS CONTAINED THEREIN ARE ANY TO BE IMPLIED. OUTLINES ARE APPROXIMATE AND SHOWN ONLY TO IDENTIFY THE PARCEL IN CONSIDERATION.

NAI Mertz

 **NAI Mertz** | 21 Roland Avenue
Mount Laurel, NJ 08054
856.234.9600 | naimertz.com

