

# MINERAL ROAD INDUSTRIAL CENTER

## INDUSTRIAL FOR LEASE

1520 W MINERAL RD & 6900 S PRIEST DR | TEMPE | ARIZONA | 85283

FOR MORE INFORMATION, PLEASE CONTACT:

**DAVID BEAN**  
D 480.214.1105 • M 480.299.5964  
dbean@cpiaz.com

**CORY SPOSI**  
D 480.621.4025 • M 480.586.1195  
csposi@cpiaz.com

**DARIN EDWARDS**  
D 480.214.1117 • M 480.628.8661  
dedwards@cpiaz.com

**COMMERCIAL PROPERTIES INC.**  
2323 W University Dr  
Tempe, AZ, 85281  
www.cpiaz.com

## PROPERTY FEATURES

- ±69,369 SF – Multi-Tenant Industrial Park
- Strategically located with easy access to I-10 Freeway & Sky Harbor International Airport
- 16' - 20' Clear Height
- Flexible Bay Sizes
- Dock High & Grade-Level Loading
- Fully Fire Sprinklered
- Ample Parking Spaces
- I-1 Zoning



*The information contained herein has been obtained from various sources. We have no reason to doubt its accuracy; however, J & J Commercial Properties, Inc. has not verified such information and makes no guarantee, warranty or representation about such information. The prospective buyer or lessee should independently verify all dimensions, specifications, floor plans, and all information prior to the lease or purchase of the property. All offerings are subject to prior sale, lease, or withdrawal from the market without prior notice.*

11 12 25



# MINERAL ROAD INDUSTRIAL CENTER

## SITE PLAN

UNDER NEW OWNERSHIP

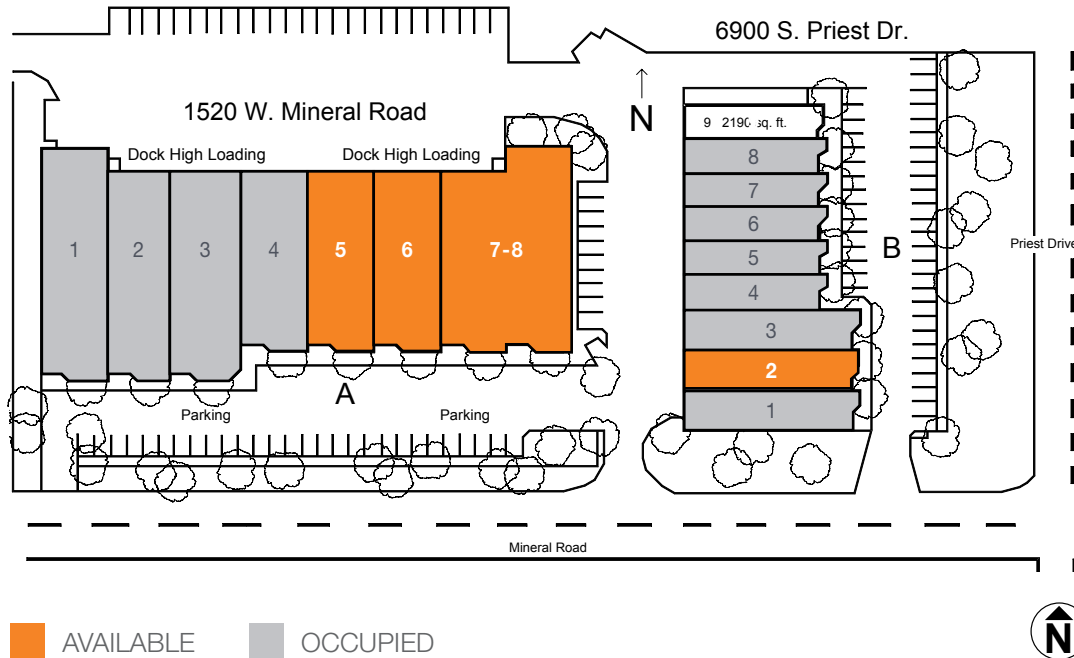


1520 W Mineral Rd - ±46,416 SF

Suites 1-8

6900 S Priest Dr - ±22,247 SF

Suites 1-9



## AVAILABILITIES

BLDG	SUITE	SF	OFFICE %	OFFICE LAYOUT
1520	5	±5,412	25%	Reception, 3 Offices, Conference Room, Break Room, & Restroom
1520	6	±5,412	25%	Reception, 2 Offices, Break Room, & 2 Restrooms
1520	7-8	±11,134	25%	Reception, 5 Offices, Bull Pen, Break Room, & 2 Restrooms
6900	2	±3,081	35%	Reception, 2 Offices, Bull Pen, & Restroom

## FOR MORE INFORMATION, PLEASE CONTACT:

DAVID BEAN  
D 480.214.1105  
M 480.299.5964  
dbean@cpiatz.com

CORY SPOSI  
D 480.621.4025  
M 480.586.1195  
csposi@cpiatz.com

DARIN EDWARDS  
D 480.214.1117  
M 480.628.8661  
dedwards@cpiatz.com



**COMMERCIAL PROPERTIES INC.**

Locally Owned. Globally Connected. CORFAC

TEMPE: 2323 W University Drive, Tempe, AZ 85281 | 480.966.2301  
SCOTTSDALE: 8767 E Via de Commercio, Suite 101, Scottsdale, AZ 85258 | www.cpiatz.com

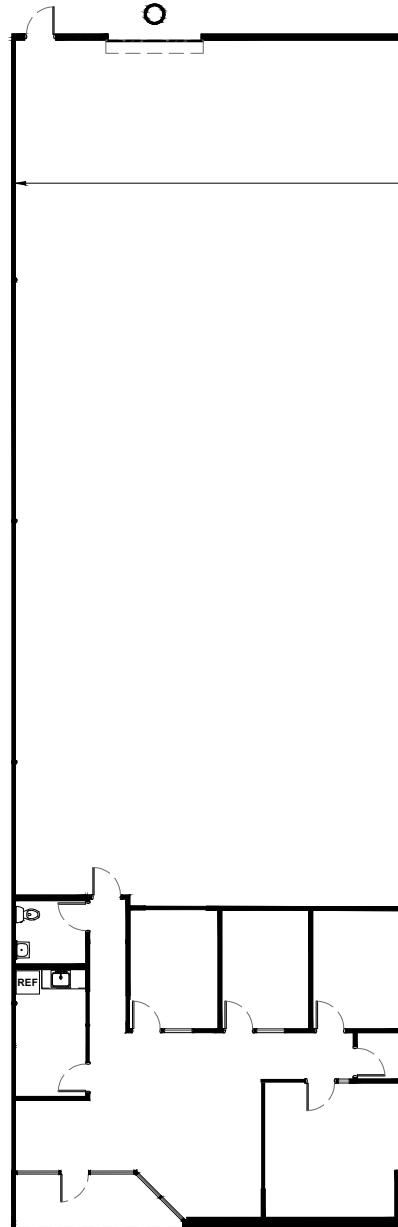
The information contained herein has been obtained from various sources. We have no reason to doubt its accuracy; however, J & J Commercial Properties, Inc. has not verified such information and makes no guarantee, warranty or representation about such information. The prospective buyer or lessee should independently verify all dimensions, specifications, floor plans, and all information prior to the lease or purchase of the property. All offerings are subject to prior sale, lease, or withdrawal from the market without prior notice.

11 12 25

# MINERAL ROAD INDUSTRIAL CENTER

1520 W MINERAL RD, SUITE 5 (±5,412 SF)

UNDER NEW OWNERSHIP



## FOR MORE INFORMATION

### DAVID BEAN

D 480.214.1105 • M 480.299.5964  
dbean@cpiaz.com

### CORY SPOSI

D 480.621.4025 • M 480.586.1195  
csposi@cpiaz.com

### DARIN EDWARDS

D 480.214.1117 • M 480.628.8661  
dedwards@cpiaz.com

## COMMERCIAL PROPERTIES INC.

2323 W University Dr  
Tempe, AZ, 85281  
www.cpiaz.com

## MINERAL ROAD INDUSTRIAL CENTER

1520 W MINERAL RD  
6900 S PRIEST DR  
TEMPE, AZ 85283



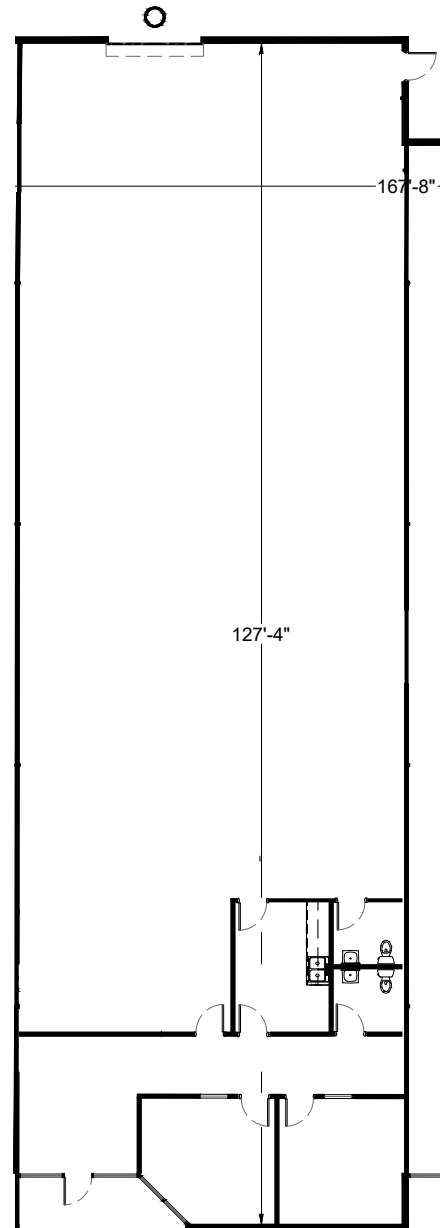
*The information contained herein has been obtained from various sources. We have no reason to doubt its accuracy; however, J & J Commercial Properties, Inc. has not verified such information and makes no guarantee, warranty or representation about such information. The prospective buyer or lessee should independently verify all dimensions, specifications, floor plans, and all information prior to the lease or purchase of the property. All offerings are subject to prior sale, lease, or withdrawal from the market without prior notice.*

11 12 25

# MINERAL ROAD INDUSTRIAL CENTER

1520 W MINERAL RD, SUITE 6 (±5,412 SF)

UNDER NEW OWNERSHIP



## FOR MORE INFORMATION

### DAVID BEAN

D 480.214.1105 • M 480.299.5964  
dbean@cpiaz.com

### CORY SPOSI

D 480.621.4025 • M 480.586.1195  
csposi@cpiaz.com

### DARIN EDWARDS

D 480.214.1117 • M 480.628.8661  
dedwards@cpiaz.com

## COMMERCIAL PROPERTIES INC.

2323 W University Dr  
Tempe, AZ, 85281  
www.cpiaz.com

## MINERAL ROAD INDUSTRIAL CENTER

1520 W MINERAL RD  
6900 S PRIEST DR  
TEMPE, AZ 85283



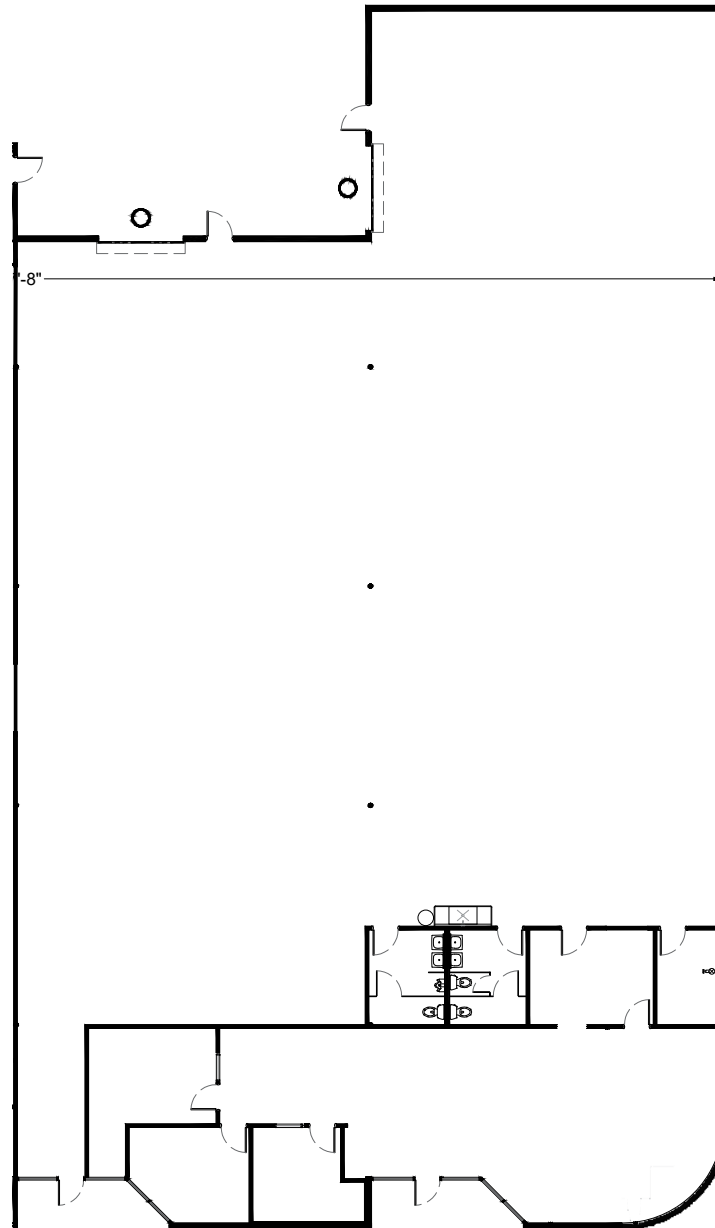
*The information contained herein has been obtained from various sources. We have no reason to doubt its accuracy; however, J & J Commercial Properties, Inc. has not verified such information and makes no guarantee, warranty or representation about such information. The prospective buyer or lessee should independently verify all dimensions, specifications, floor plans, and all information prior to the lease or purchase of the property. All offerings are subject to prior sale, lease, or withdrawal from the market without prior notice.*

11 12 25

# MINERAL ROAD INDUSTRIAL CENTER

1520 W MINERAL RD, SUITE 7-8 (±11,134 SF)

UNDER NEW OWNERSHIP



## FOR MORE INFORMATION

### DAVID BEAN

D 480.214.1105 • M 480.299.5964  
dbean@cpiaz.com

### CORY SPOSI

D 480.621.4025 • M 480.586.1195  
csposi@cpiaz.com

### DARIN EDWARDS

D 480.214.1117 • M 480.628.8661  
dedwards@cpiaz.com

## COMMERCIAL PROPERTIES INC.

2323 W University Dr  
Tempe, AZ, 85281  
[www.cpiaz.com](http://www.cpiaz.com)

## MINERAL ROAD INDUSTRIAL CENTER

1520 W MINERAL RD  
6900 S PRIEST DR  
TEMPE, AZ 85283



*The information contained herein has been obtained from various sources. We have no reason to doubt its accuracy; however, J & J Commercial Properties, Inc. has not verified such information and makes no guarantee, warranty or representation about such information. The prospective buyer or lessee should independently verify all dimensions, specifications, floor plans, and all information prior to the lease or purchase of the property. All offerings are subject to prior sale, lease, or withdrawal from the market without prior notice.*

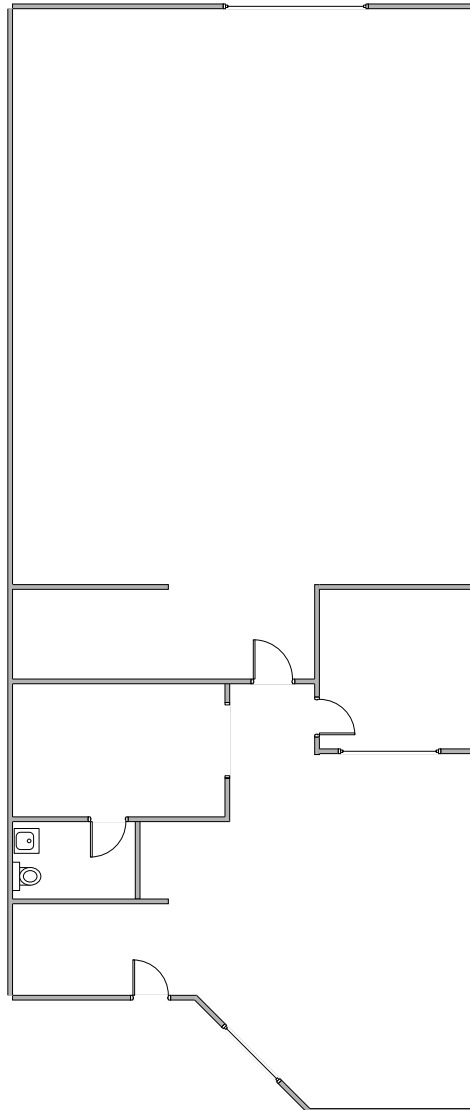
11 12 25



# MINERAL ROAD INDUSTRIAL CENTER

6900 S PRIEST DR, SUITE 2 (±3,081 SF)

UNDER NEW OWNERSHIP



## FOR MORE INFORMATION

### DAVID BEAN

D 480.214.1105 • M 480.299.5964  
dbean@cpiaz.com

### CORY SPOSI

D 480.621.4025 • M 480.586.1195  
csposi@cpiaz.com

### DARIN EDWARDS

D 480.214.1117 • M 480.628.8661  
dedwards@cpiaz.com

## COMMERCIAL PROPERTIES INC.

2323 W University Dr  
Tempe, AZ, 85281  
[www.cpiaz.com](http://www.cpiaz.com)

## MINERAL ROAD INDUSTRIAL CENTER

1520 W MINERAL RD  
6900 S PRIEST DR  
TEMPE, AZ 85283



*The information contained herein has been obtained from various sources. We have no reason to doubt its accuracy; however, J & J Commercial Properties, Inc. has not verified such information and makes no guarantee, warranty or representation about such information. The prospective buyer or lessee should independently verify all dimensions, specifications, floor plans, and all information prior to the lease or purchase of the property. All offerings are subject to prior sale, lease, or withdrawal from the market without prior notice.*

11 12 25

# MINERAL ROAD INDUSTRIAL CENTER

## AMENITIES & IMPROVEMENTS

UNDER NEW OWNERSHIP



### NEARBY AMENITIES

- Sky Harbor International Airport
- Arizona State University
- Easy Access to I-10 Freeway

### FOR MORE INFORMATION

DAVID BEAN

D 480.214.1105 • M 480.299.5964  
dbean@cpiaz.com

CORY SPOSI

D 480.621.4025 • M 480.586.1195  
csposi@cpiaz.com

DARIN EDWARDS

D 480.214.1117 • M 480.628.8661  
dedwards@cpiaz.com

### COMMERCIAL PROPERTIES INC.

2323 W University Dr  
Tempe, AZ, 85281  
www.cpiaz.com

### MINERAL ROAD INDUSTRIAL CENTER

1520 W MINERAL RD  
6900 S PRIEST DR  
TEMPE, AZ 85283



NEARBY AMENITIES