

CLASS A WEST VALLEY OFFICE BUILDING STEPS TO SANTANA ROW AND WESTFIELD VALLEY FAIR

2880 STEVENS CREEK BLVD

SAN JOSE, CA

±16,472 SF Available (Divisible to ±6,500 SF)



NEWMARK

Tracey Solari

408.987.4148

tracey.solari@nmrk.com

CA RE LIC #01269780

280

- ▶ 3rd Floor: ±16,472 SF
 - Divisible to ±6,500 SF
 - Market Ready Improvements Underway
- ▶ High Identity Location on Stevens Creek Blvd adjacent to Santana Row
- ▶ Newly Remodeled Main Lobby
- ▶ Full Access to Santana Row and Westfield Mall Amenities
- ▶ On-Site Garage Parking
- ▶ Each level has a Private Entrance to the Building and Private Lobby
- ▶ Expansive Outdoor Terraces
- ▶ Unmatched Access to Highway 17/880, Highway 280 and San Tomas Expressway
- ▶ Prominent Monument Signage
- ▶ Large Exterior Courtyard Area for Outdoor Seating/Dining
- ▶ Future ground floor retail additions forthcoming, bringing new energy and elevating the image of the Project

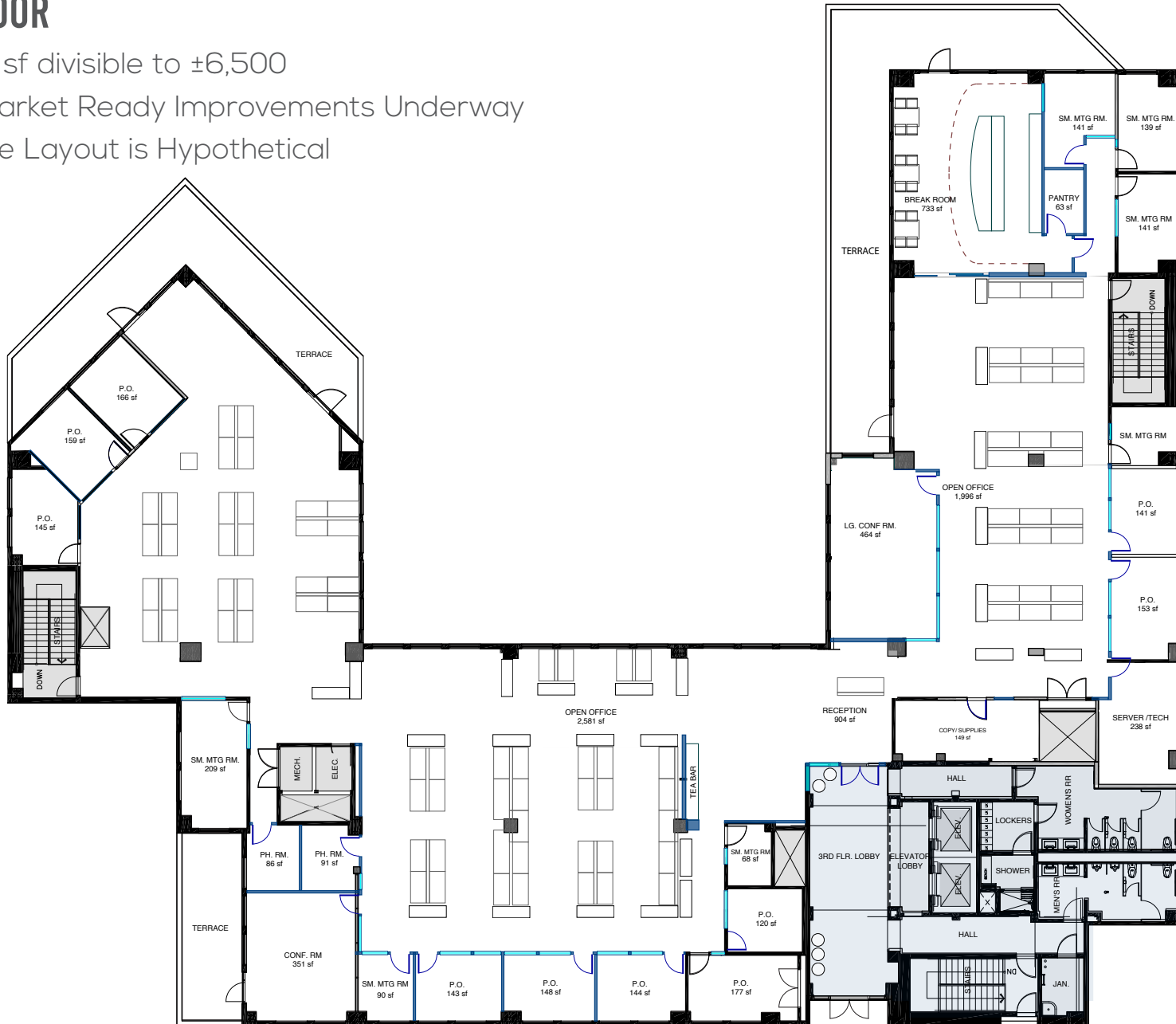
HIGHLIGHTS



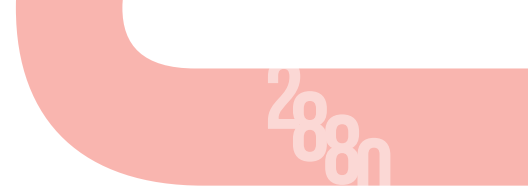
Floor Plan

THIRD FLOOR

- ±16,472 sf divisible to ±6,500
- Spec/Market Ready Improvements Underway
- Furniture Layout is Hypothetical



Amenities



2880
STEVENS CREEK
BLVD

SANTANA ROW

Crate&Barrel

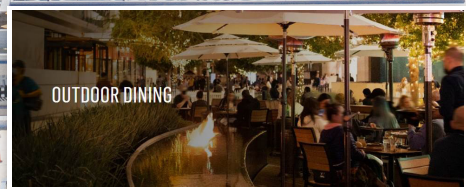
Yard House

Stevens Creek Blvd

Pedestrian Connections
Between New 10-Restaurant
Promenade & Santana Row

bloomingdale's

Apple
Store



OUTDOOR DINING

The
Cheesecake
Factory

Westfield

New High-end Restaurants
& Promenade

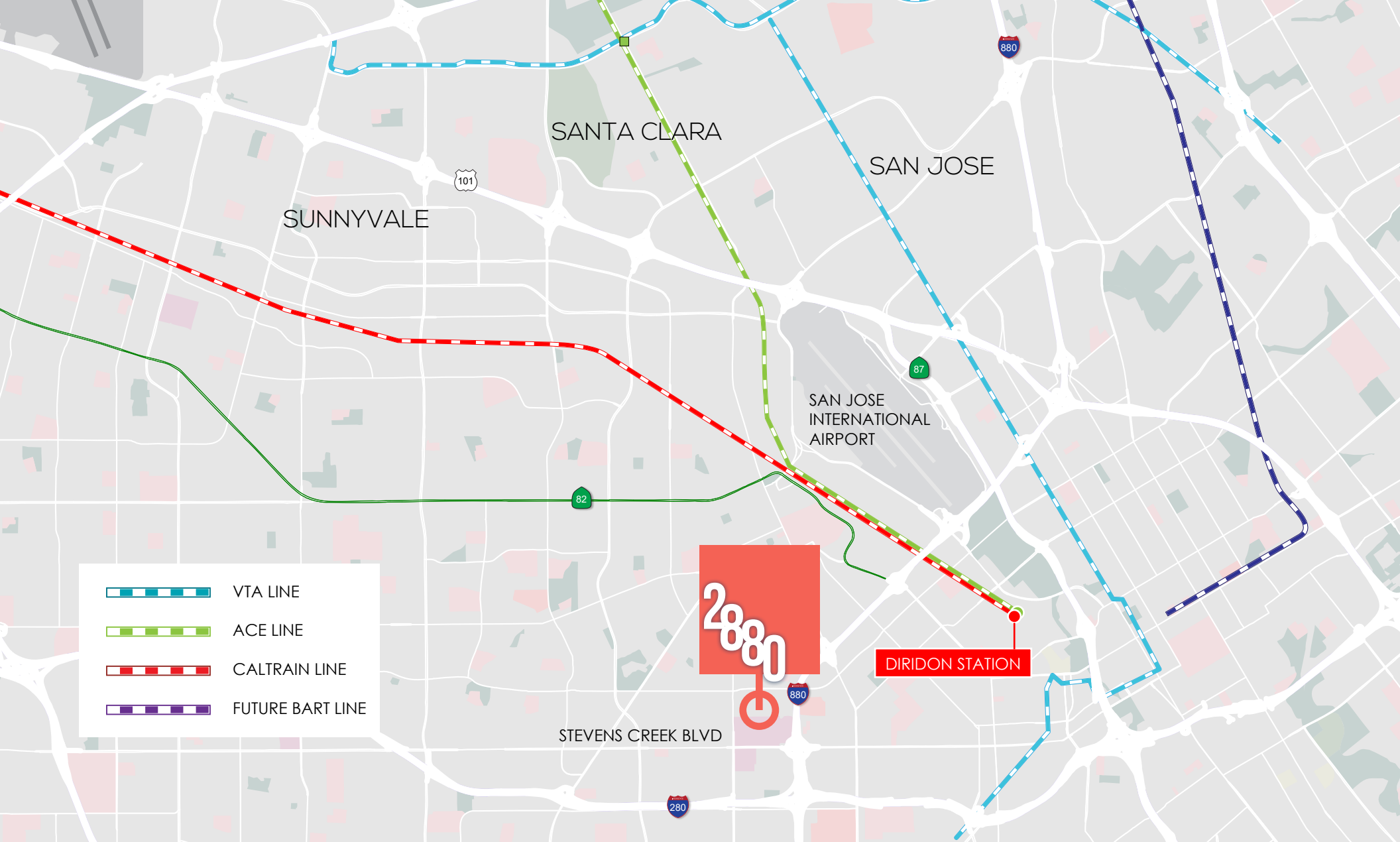
JOEY RESTAURANTS





MASTRO'S
RESTAURANTS

SALT & STRAW

EAT ALY

KING'S
FISH HOUSE



-  VTA LINE
-  ACE LINE
-  CALTRAIN LINE
-  FUTURE BART LINE

Tracey Solari
 408.987.4148
 tracey.solari@nmrk.com
 CA RE LIC #01269780



3055 Olin Avenue, Suite 2200, San Jose, CA 95128 | The distributor of this communication is performing acts for which a real estate license is required. The information contained herein has been obtained from sources deemed reliable but has not been verified and no guarantee, warranty or representation, either express or implied, is made with respect to such information. Terms of sale or lease and availability are subject to change or withdrawal without notice. 9536428280 • 10/25