



## Metro Star Plaza

190 Middlesex Essex Turnpike  
Iselin, New Jersey

### Property Features

- Two glass elevators
- 24-hour card key access
- Walking distance to Post Office
- Minutes away from numerous hotels, restaurants and shops, including Woodbridge and Menlo Park Malls
- Adjacent to the Metro Park Train Station which is convenient to New York City and Washington D.C.
- Immediate Access to Route 27
- Easy Access to the Garden State Parkway

### SPACE AVAILABLE

<b>2<sup>nd</sup> Floor</b> Available July 2026	<b>725 Rsf</b>
<b>2<sup>nd</sup> Floor</b> Available May 2026	<b>2,207 Rsf</b>
<b>4<sup>th</sup> Floor</b> Available Now	<b>759 Rsf</b>
<b>Call For Lease Price Information</b>	

90 Woodbridge Center Drive, Suite 160  
Woodbridge, NJ 07095  
732 985 3000

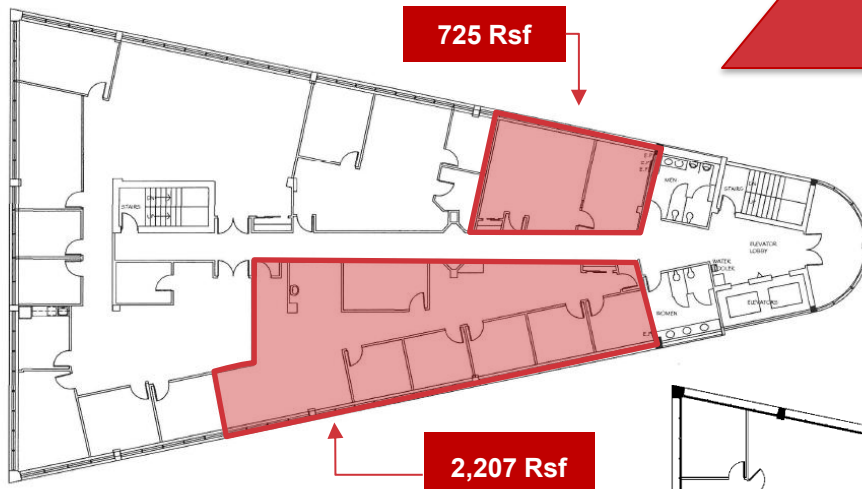
[naidb.com](http://naidb.com)

*For Further Information Please Contact Exclusive Broker:*

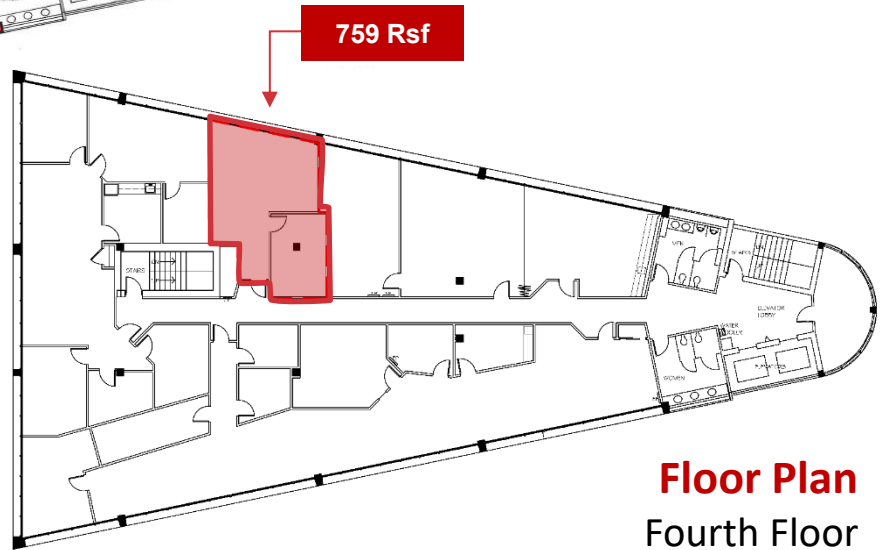
**Marc L. Shein**  
Executive Vice President

732-985-3000 ext. 212  
[mshein@naidb.com](mailto:mshein@naidb.com)

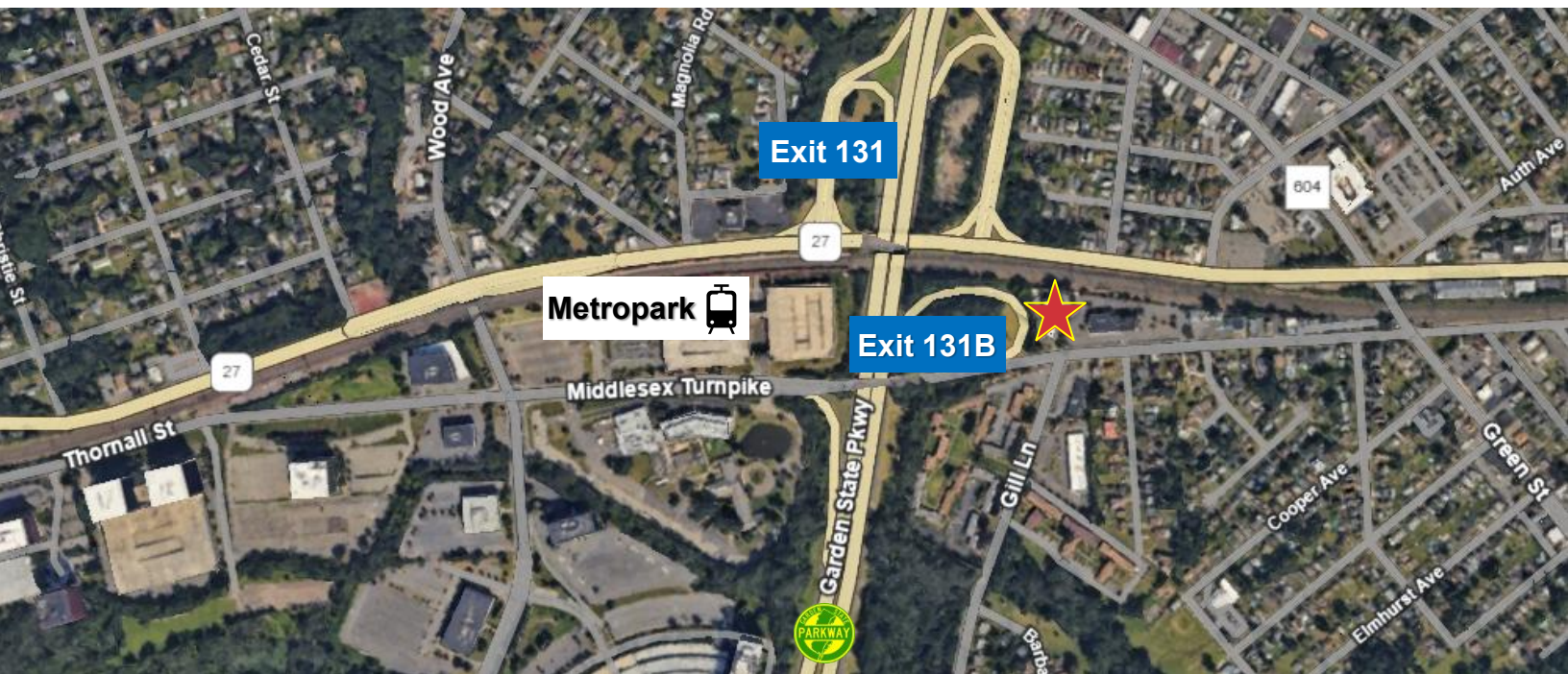
# Office Space For Lease



**Floor Plan**  
Second Floor



**Floor Plan**  
Fourth Floor



**NAI DiLeo-Bram & Co.**

Commercial Real Estate Services, Worldwide.

90 Woodbridge Center Drive, Suite 160  
Woodbridge, NJ 07095  
732 985 3000 | [naidb.com](http://naidb.com)

For Further Information Please Contact Exclusive Broker:

Marc L. Shein  
Executive Vice President

732-985-3000 ext. 212  
[mshein@naidb.com](mailto:mshein@naidb.com)

The information contained herein has been given to us by the owner of the property or other sources we deem reliable. We have no reason to doubt its accuracy, but we do not guarantee it. All information should be verified prior to purchase or lease.