



**FULL BUILDING AVAILABILITY**

**86 Hopmeadow Street** in Simsbury, Connecticut is a three-story, 39,475 square foot Class A office property located in a corporate campus environment in a beautiful suburban setting.

86 Hopmeadow Street offers modern, high-end finishes and dramatic views of Talcott Mountain. The entire building is available for lease but can also be subdivided into suites as small as 2,000 SF.



For further information, please contact:

**Maury Smith** | D 860.327.8304 | C 860.748.2508 | [maury.smith@avisonyoung.com](mailto:maury.smith@avisonyoung.com)

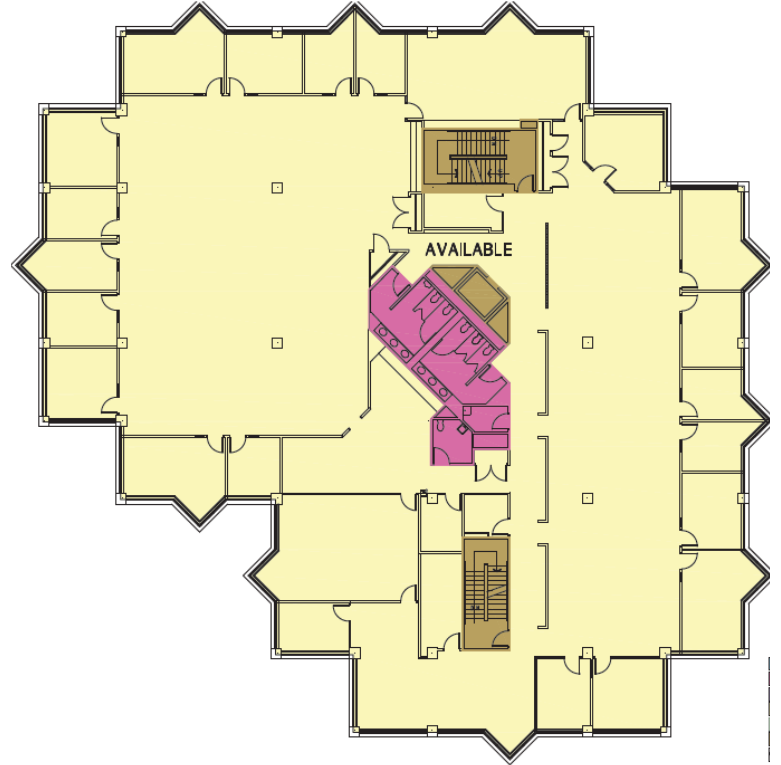
**Avison Young** | 225 Asylum Street, 16th Floor | Hartford, CT 06103 | T 860.327.8330

# 86 Hopmeadow Street

Simsbury, Connecticut

## BUILDING FEATURES

- Signature office building with excellent Simsbury location on Route 10
- Magnificent setting with dramatic views of Talcott Mountain
- 4 per 1,000 parking
- Located within one mile of Route 44 Retail Corridor
- Full building currently available
- Asking Lease Rate of \$20.00 PSF Gross



**Premier  
Location**

Quick access to I-84, 15  
minute drive into  
downtown Hartford.

For further information, please contact:

**Maury Smith** | D 860.327.8304 | C 860.748.2508 | maury.smith@avisonyoung.com

**Avison Young** | 225 Asylum Street, 16th Floor | Hartford, CT 06103 | T 860.327.8330

**AVISON  
YOUNG**