



10967 Columbus Parkway

Etna, Ohio 43018

Property Features

- 7,840 SF 2-Bay Repair Facility with Office and Showroom
- ±16 Acres Available (7 Acres Improved - All or Part)
- Former International Truck Dealership
- 2 Drive-in Doors (14') and External Dock
- Fenced and Lighted Lot
- Pylon Sign
- Expandable with Additional Acreage Available
- Zoned: Industrial
- Easy Access and Visibility to I-70, State Routes 40 and 310

Lease Or Sale Rate: Call For Pricing



For more information:

Dan Sheeran

614 629 5216 • dsheeran@ohioequities.com

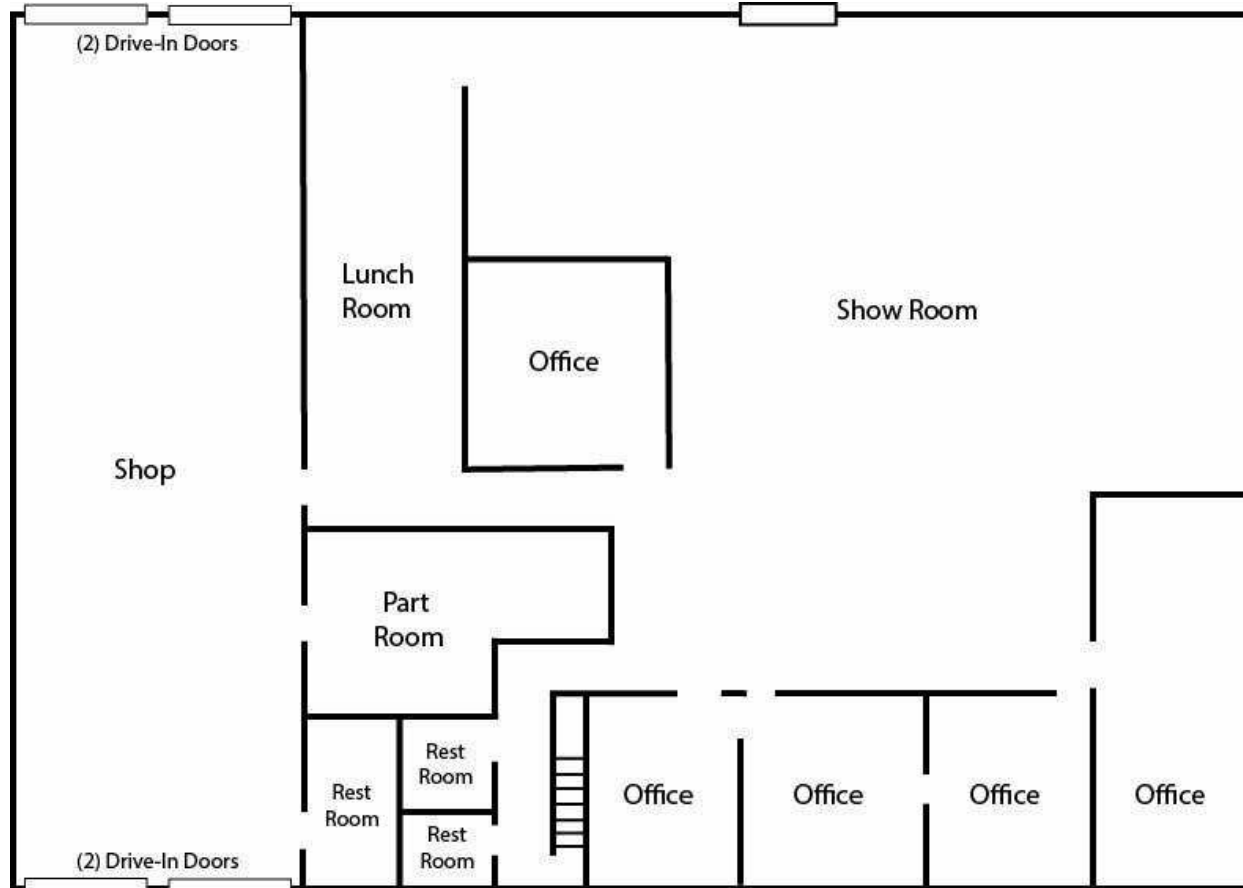
Dan Sheeran, Jr.

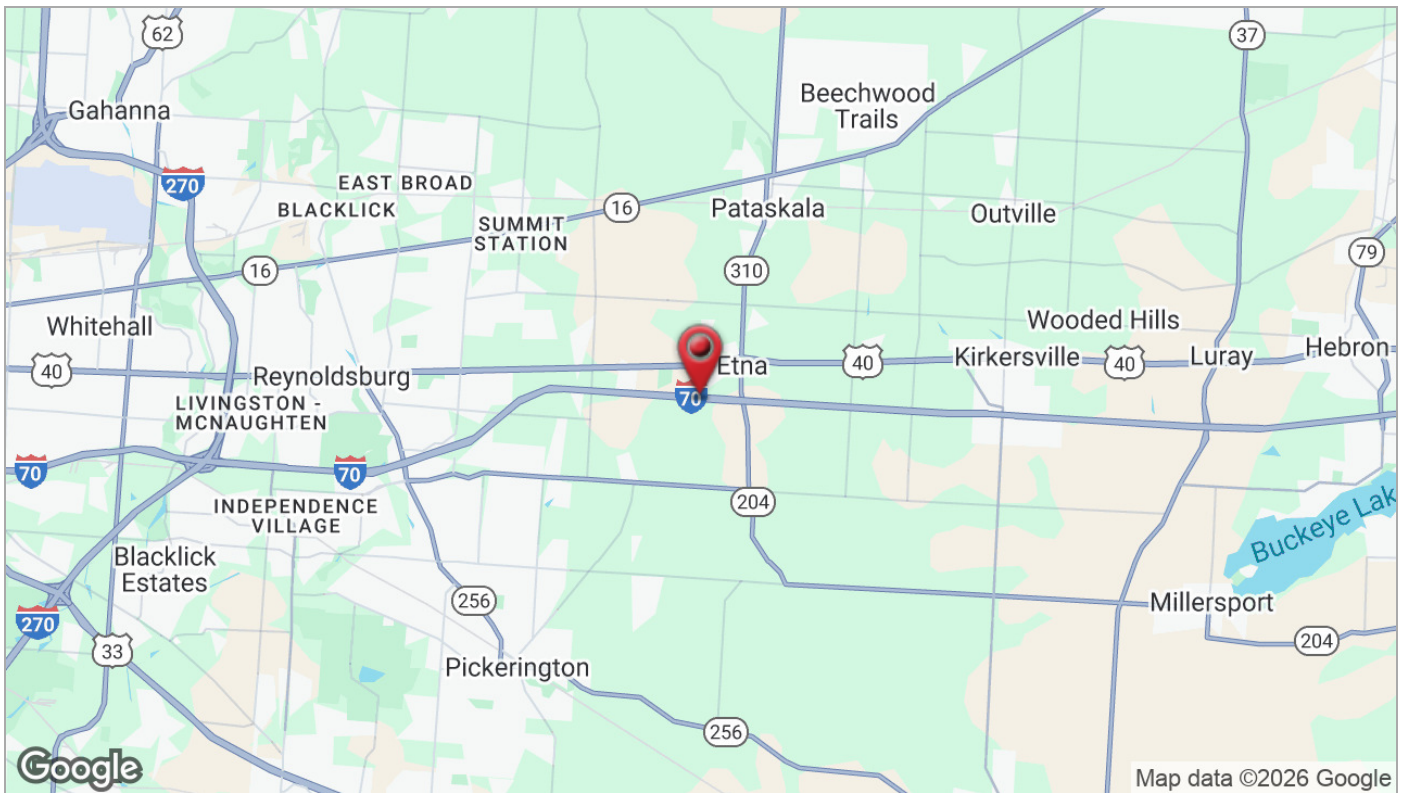
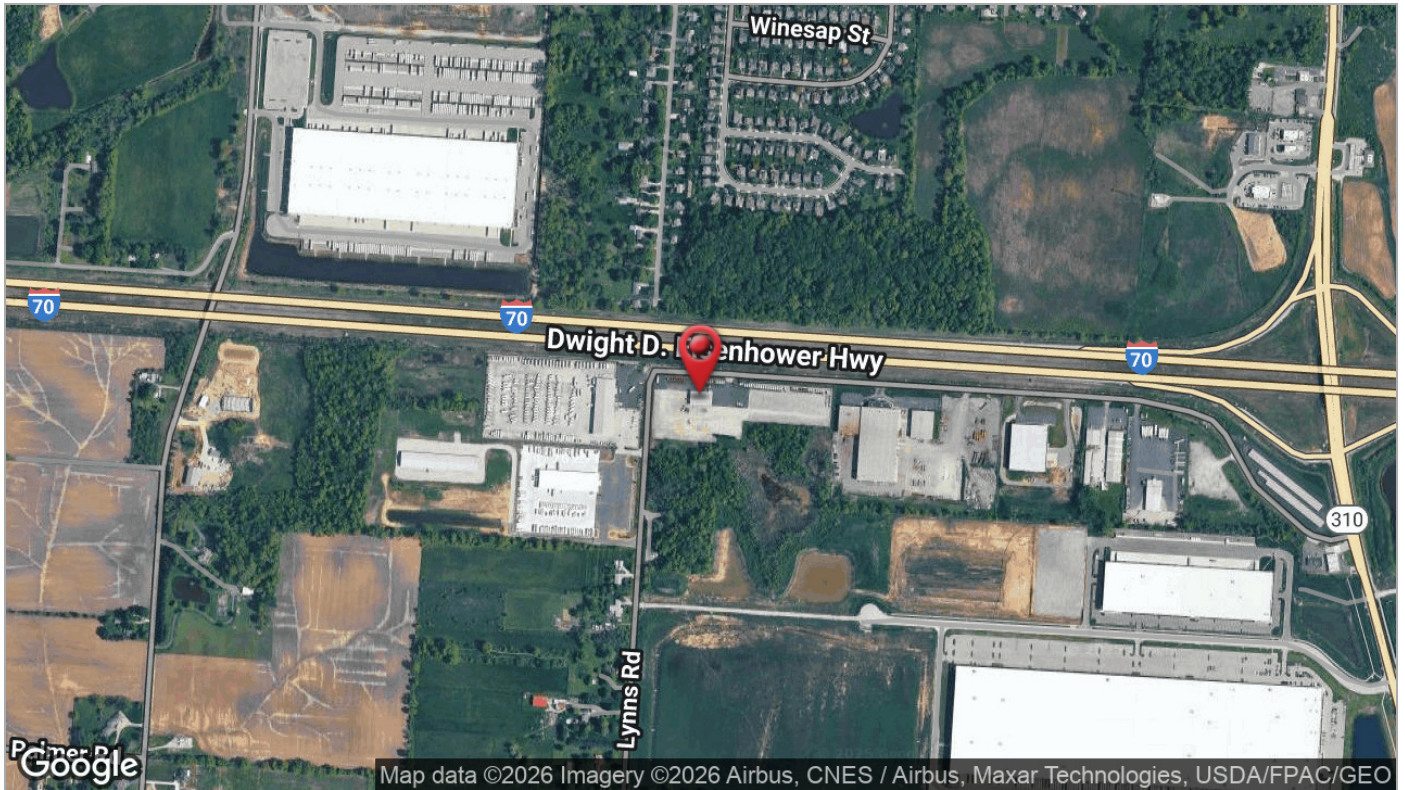
614 629 5228 • djsheeran@ohioequities.com

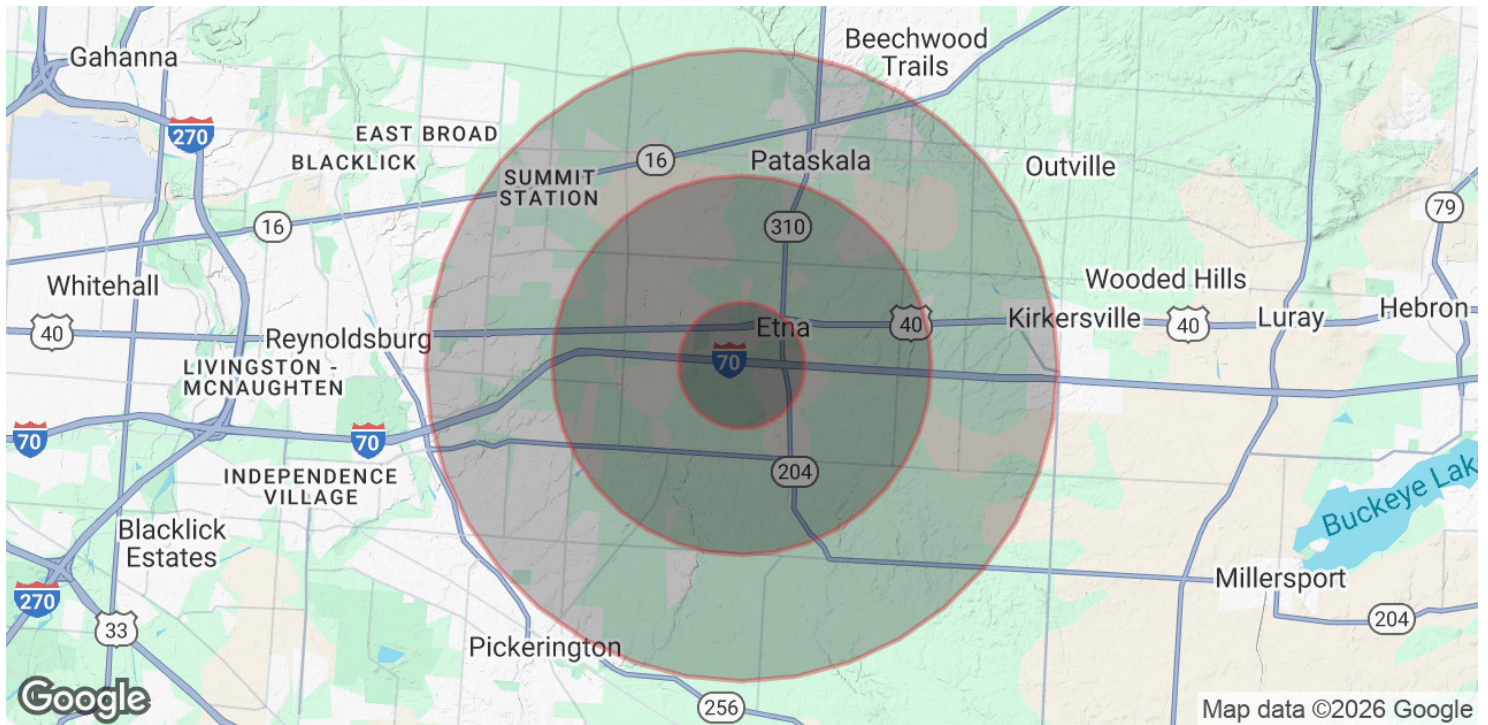
Mike Semon

614 629 5217 • msemon@ohioequities.com









POPULATION

	1 MILE	3 MILES	5 MILES
Total Population	2,565	14,700	59,298
Average Age	37	39	40
Average Age (Male)	37	38	39
Average Age (Female)	37	40	41

HOUSEHOLDS & INCOME

	1 MILE	3 MILES	5 MILES
Total Households	854	5,127	21,008
# of Persons per HH	3	2.9	2.8
Average HH Income	\$130,618	\$125,978	\$126,197
Average House Value	\$283,644	\$338,304	\$331,010

Demographics data derived from AlphaMap