



Represented By:

**Jonathan Douillard**  
First Vice President

O: 615.345.7233  
[jdouillard@charleshawkinsco.com](mailto:jdouillard@charleshawkinsco.com)

**Kevin Irwin, SIOR**  
Senior Vice President

C: 407.408.5676  
[kirwin@charleshawkinsco.com](mailto:kirwin@charleshawkinsco.com)

**Tee Patterson, SIOR**  
First Vice President

O: 615.345.7229  
[tpatterson@charleshawkinsco.com](mailto:tpatterson@charleshawkinsco.com)

**Charles Hawkins Co.**

2920 Berry Hill Dr., Ste 100, Nashville, TN 37204  
P: 615.256.3189 | [www.charleshawkinsco.com](http://www.charleshawkinsco.com)

**CHARLES  
HAWKINS CO.**  
Commercial Real Estate Services



# AIRPARK BUSINESS CENTER

CHARLES HAWKINS CO.  
Commercial Real Estate Services

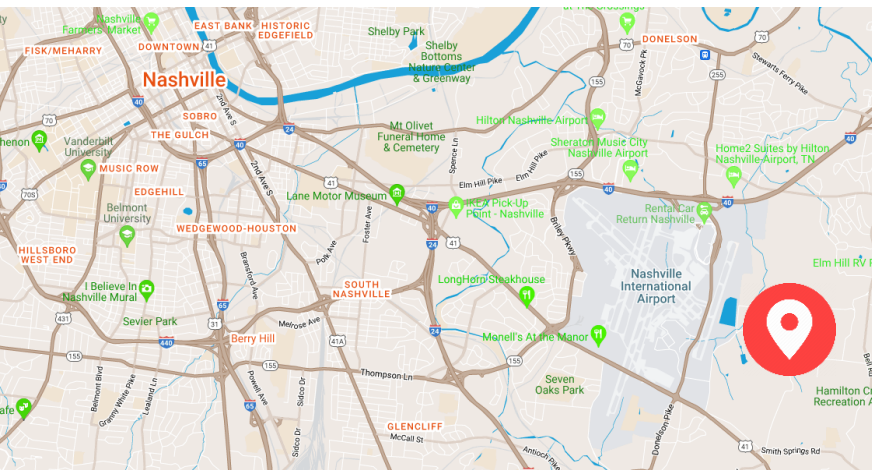
1400 Donelson Pike, A05, Nashville, TN

## 1400 DONELSON PIKE, A05 | SPECIFICATIONS

- ±8,144 SF Warehouse
- ±2,326 SF Office

±10,470 SF | OFFICE/WAREHOUSE SPACE

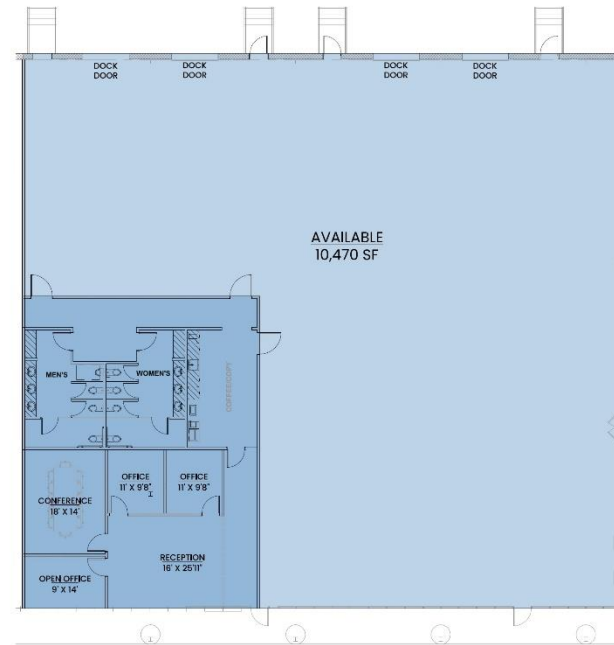
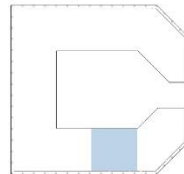
LEASE RATE: \$15/SF NNN  
OPEX: \$3.84/SF



AVAILABLE  
SUITE A05 - 10,470 SF  
OFFICE - 2,326 SF  
WAREHOUSE - 8,144 SF

1400 DONELSON PIKE, A05  
NASHVILLE, TN 37217

KEY PLAN



NASHVILLE, TN



**Jonathan Douillard**  
**First Vice President**  
O: 615.345.7233  
[jdouillard@charleshawkinsco.com](mailto:jdouillard@charleshawkinsco.com)

**Kevin Irwin, SIOR**  
**Senior Vice President**  
C: 407.408.5676  
[kirwin@charleshawkinsco.com](mailto:kirwin@charleshawkinsco.com)

**Tee Patterson, SIOR**  
**First Vice President**  
O: 615.345.7229  
[tpatterson@charleshawkinsco.com](mailto:tpatterson@charleshawkinsco.com)

# CHARLES HAWKINS CO.

2920 Berry Hill Dr., Ste 100  
Nashville, TN 37204  
O: 615.256.3189  
[www.charleshawkinsco.com](http://www.charleshawkinsco.com)



The Silverman Group is a privately owned and operated private equity and real estate development organization based in Basking Ridge, New Jersey. The firm owns and manages over 19,000,000 square feet of office, industrial, retail, and aviation properties as well 4,000 multi-family units throughout the United States. It has over 5,000,000 square feet of commercial space and 2,000 multi-family units currently under development in six states.