

CLUB CENTER

8014 CLUB CENTER DRIVE, CORDOVA, TN 38016

FOR LEASE




LOCATION DESCRIPTION

28,482 SF retail center located on the northwest corner of N Germantown Parkway and Club Center Drive in Cordova, Tennessee

PROPERTY HIGHLIGHTS

- 1,400 SF spaces available
- Adjacent to the Cordova Skating Center, Bowling Center and YMCA
- Area retailers include Kroger, Malco Theatres, Marshalls, Crunch Fitness, HomeGoods, Incredible Pizza, Aldi, Ace Hardware, Dollar Tree, Party City, Petco, Walgreens, CVS, Whataburger and more
- Traffic Count (AADT): Germantown Pkwy 46,105



 DEMOGRAPHICS	1 MILE	3 MILES	5 MILES
Population	12,683	70,635	166,907
Daytime Population	12,123	67,138	164,764
Households	5,653	28,903	66,152
Average HH Income	\$84,073	\$93,130	\$106,399



JON ISBELL

jon.isbell@tscg.com
901.334.5706

HURSTON REED

hurston.reed@tscg.com
901.334.5708

GRIFFEN WALDEN

griffen.walden@tscg.com
901.538.6530

CLUB CENTER

8014 CLUB CENTER DRIVE, CORDOVA, TN 38016

FOR LEASE



AVAILABLE

AVAILABLE SOON

UNAVAILABLE

SUITE	TENANT NAME	SPACE SIZE
8014-3	D'Luxe Venue	4,900 SF
8014-5	Chiro-R-Us	2,100 SF
8014-6	Available	1,400 SF
8014-7	Available Soon	1,398 SF
8014-8 & 9	New Beginnings Learning Center	2,800 SF
8014-10	Golden Hands Spa	1,400 SF
8014-11	State Farm	1,600 SF

SUITE	TENANT NAME	SPACE SIZE
8014-12	Blues City Music	2,200 SF
1425-1	Cicis Pizza	3,970 SF
1425-2	DK Tailors	1,115 SF
1425-3	El Trebol de Oro Jewelry	1,400 SF
1425-4	745-Cash	1,399 SF
1425-5	Cute-Icles Nail Salon	1,400 SF
1425-6	Infamous Kutz	1,400 SF



JON ISBELL

jon.isbell@tscg.com
901.334.5706

HURSTON REED

hurston.reed@tscg.com
901.334.5708

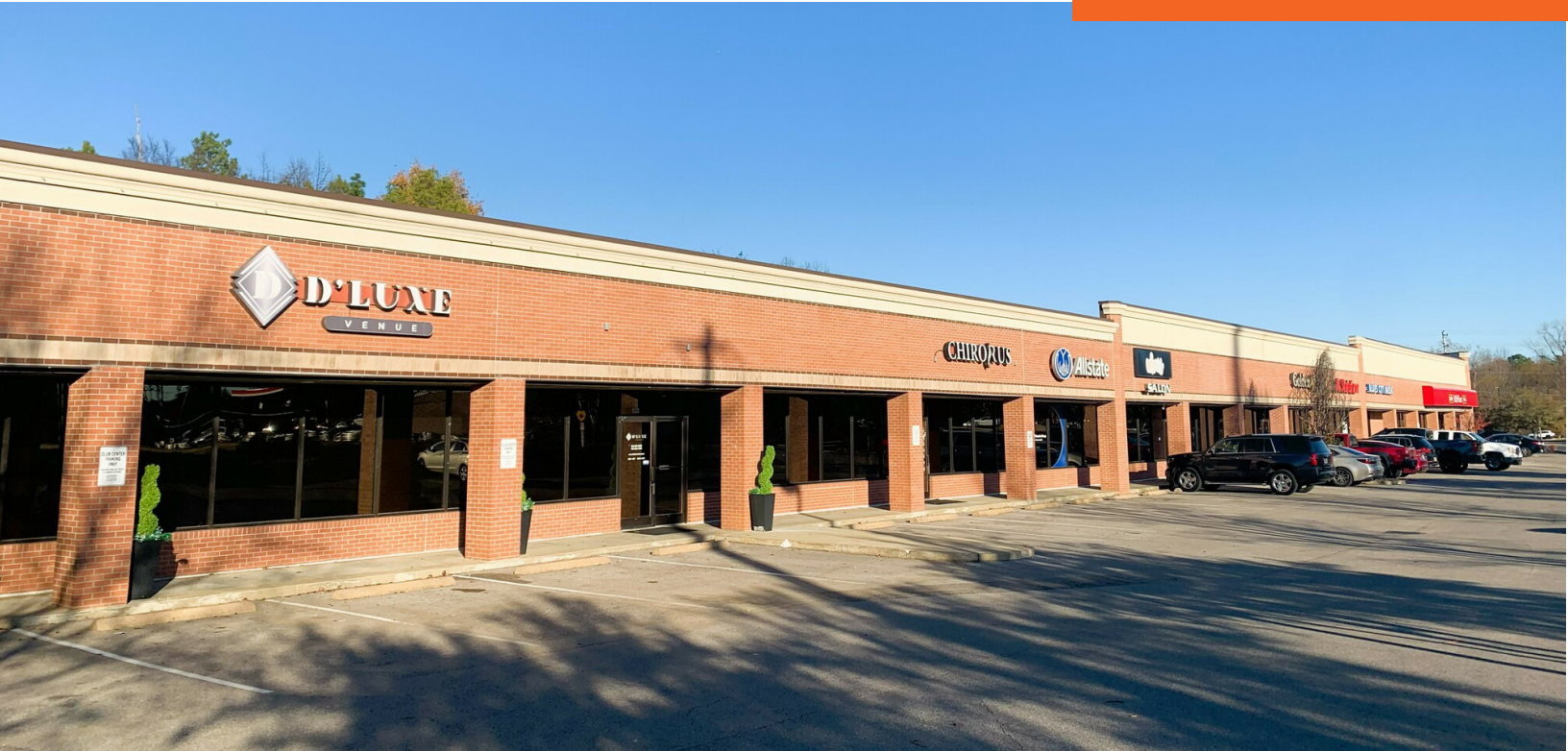
GRIFFEN WALDEN

griffen.walden@tscg.com
901.538.6530

CLUB CENTER

8014 CLUB CENTER DRIVE, CORDOVA, TN 38016

FOR LEASE



JON ISBELL

jon.isbell@tscg.com
901.334.5706

HURSTON REED

hurston.reed@tscg.com
901.334.5708

GRIFFEN WALDEN

griffen.walden@tscg.com
901.538.6530

CLUB CENTER

8014 CLUB CENTER DRIVE, CORDOVA, TN 38016

FOR LEASE



JON ISBELL

jon.isbell@tscg.com
901.334.5706

HURSTON REED

hurston.reed@tscg.com
901.334.5708

GRIFFEN WALDEN

griffen.walden@tscg.com
901.538.6530